

PHILIPS

EVNIA



Full HD gaming
monitor

Gaming Monitor

Evnia 5000

25 (24.5" / 62.2 cm diag.)

1920 x 1080 (Full HD)



25M2N5200P

Your gaming experience to the utmost

A gaming monitor that has the best of both worlds. With SmartContrast, along with the combination of AMD FreeSync Premium technology and 280 Hz refresh rate, this product promises fluid and lag free gaming without compromising on imaging.

Built for fast action

- 0.5 ms ultra-fast speed for crisp image and smooth gameplay

Features designed for gamers needs

- LowBlue mode and Flicker-free easy-on-the eyes viewing
- Tilt, swivel and height-adjust for an ideal viewing position
- EasySelect menu toggle key for quick on-screen menu access
- New OSD features for much more engaging gaming experience

Built for fast action

- AMD FreeSync™ Premium; tear free, stutter free, fluid gaming
- Certified NVIDIA® G-SYNC® compatible for smooth fast gaming
- Low input lag reduces time delay between devices to monitor
- 280Hz trail-blazing refresh rate for smoothest gameplay

Immersive visuals

- 16:9 Full HD display for crisp detailed images
- SmartContrast for rich black details

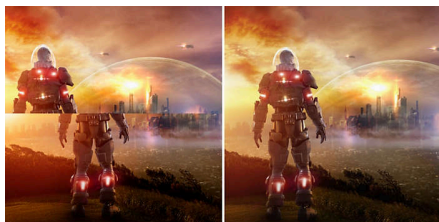
Gaming Monitor

Full HD gaming monitor

25M2N5200P/70

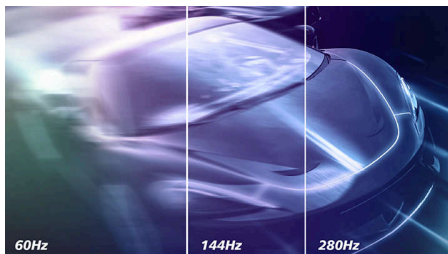
Highlights

AMD FreeSync™ Premium



Gaming shouldn't be a choice between choppy gameplay or broken frames. AMD FreeSync™ Premium equips serious gamers with a fluid, tear-free gameplay experience at peak performance. There are no compromises, game confidently with a high refresh rate, low framerate compensation, and low latency.

Accelerated 280Hz refresh rate



Philips Evnia 280 Hz display takes your gaming experience to new dimensions. The low input lag coupled with variable refresh rate technology gives you an Immersive gaming advantage. Plus, our wide view angle panel with high resolution provides a realistic gaming experience with unsurpassed color accuracy. Focus on what matters as adjustable stand gives the comfort you deserve and flicker-free gives an easy viewing, so you continue gaming without health worries.

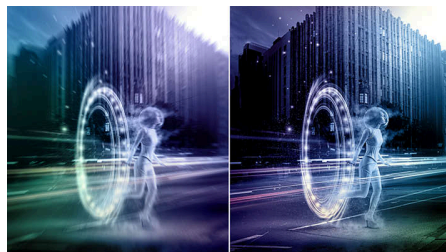
Low input lag



Input lag is the amount of time that elapses between performing an action with connected devices and seeing the result on screen. Low input lag reduces the time delay between entering a command from your devices to

monitor, greatly improve on playing twitch-sensitive video games, particularly important to whom plays fast-paced, competitive games.

0.5 ms Smart MBR fast response



Philips Evnia with 0.5 ms Smart MBR effectively eliminates smearing and motion blur, delivers sharper and precise visuals to enhance gaming experience. Fast-moving action and dramatic transitions will be rendered smoothly. Best choice for playing thrilling and twitch-sensitive games.

IPS technology



IPS displays use an advanced technology which gives you extra wide viewing angles of 178/178 degree, making it possible to view the display from almost any angle. Unlike standard TN panels, IPS displays gives you remarkably crisp images with vivid colors, making it ideal not only for Photos, movies and web browsing, but also for professional applications which demand color accuracy and consistent brightness at all times.

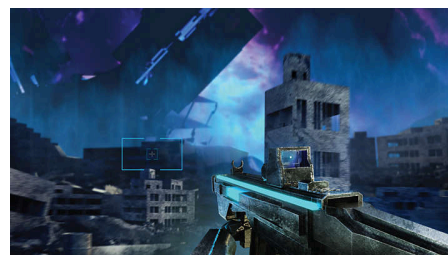
SmartImage HDR



Select one of SmartImage HDR modes to best suit your needs. HDR Game: Optimize for playing video games. With brighter white and darker

black, the gaming scene is vivid and revealing more details, easily spot enemies hiding in the dark corner and shadows. HDR Movie: Ideal for watching HDR movie. Deliver better contrast and brightness for more realistic and immerse viewing experience. HDR Photo: Enhance red, green, and blue for lively visuals. DisplayHDR: VESA DisplayHDR certified*. Personal: Customize settings in picture menu. *Please refer to specification for HDR grade.

New features for better gaming



Philips Evnia is equipped with new features in OSD (on-screen display). Smart MBR Sync enables a great pair of MPRT together with Adaptive-sync, eliminating motion blur and ghosting while guaranteeing sharp and speedy gaming visuals with high frame rates. Smart ShadowBoost enhances dark scenes, allowing more details without overexposure. Smart Crosshair lets you never miss a single target.

LowBlue mode & Flicker-free



Our LowBlue Mode and Flicker-free technology have been developed to reduce eye strain and fatigue often caused by long hours in front of a monitor.

AMD
FreeSync
Premium

280Hz

Low Input Lag

LowBlue Mode

CompactErgo
Base

EasySelect

Full HD
1080p

NVIDIA
G-SYNC

Gaming Monitor

Full HD gaming monitor

25M2N5200P/70

Highlights

Compact Ergo Base



The Compact Ergo Base is a people-friendly Philips monitor base that tilts, swivels and height-adjusts so each user can position the monitor for maximum viewing comfort and efficiency.

EasySelect Menu Toggle Key



The discreetly placed EasySelect Menu Toggle Key allows you to make quick and easy adjustments to monitor settings in the On-Screen Display menu.

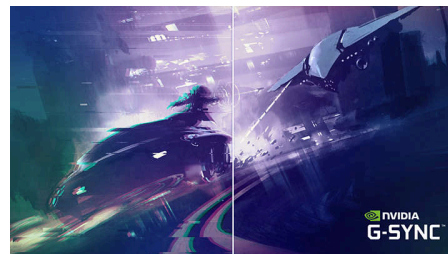
16:9 Full HD display



Picture quality matters. Regular displays deliver quality, but you expect more. This display features enhanced Full HD 1920 x 1080

resolution. With Full HD for crisp detail paired with high brightness, incredible contrast and realistic colors expect a true to life picture.

NVIDIA® G-SYNC® compatible



When playing intense games with high refresh rates, screen tearing may appear without optimal graphics synchronization. This Philips display is certified as NVIDIA® G-SYNC® compatible, reducing screen tearing and syncing your monitor's refresh rate with your graphic card's output for a smoother gaming experience. Scenes appear instantly, objects look sharper, and gameplay is smooth, giving you a stunning visual experience and a serious competitive edge.



Flicker-free

Specifications

Picture/Display

Panel Size: 24.5 inch / 62.2 cm
Aspect ratio: 16:9
LCD panel type: IPS technology
Backlight type: W-LED system
Pixel pitch: 0.2832 x 0.2802 mm
Brightness: 400 cd/m²
Display colors: 16.7 M (RGB 8 bit)
Color gamut (typical): Adobe RGB 86.2%, DCI-P3:83.8%, sRGB: 110%, NTSC 93.4%*
Contrast ratio (typical): 1000:1
SmartContrast: Mega Infinity DCR
Response time (typical): 1 ms (Gray to Gray)*
Viewing angle: 178° (H) / 178° (V), @ C/R > 10
Picture enhancement: SmartImage game
Maximum resolution: HDMI: 1920 x 1080 @ 240 Hz; DP: 1920 x 1080 @ 280 Hz* (overclock)
Effective viewing area: 543.744 (H) x 302.616 (V)
Scanning Frequency: HDMI: 30 - 274 kHz (H) / 48 - 240 Hz (V); DP: 30 - 310 kHz (H) / 48 - 280 Hz (V)
sRGB
Delta E: < 2 (sRGB)
Flicker-free
Pixel Density: 89.91 PPI
LowBlue Mode
Display Screen Coating: Anti-Glare, 3H, Haze 25%
SmartUniformity: 93 ~ 105%
MPRT: 0.5 ms
Low Input Lag
EasyRead
AMD FreeSync™ technology: Premium G-SYNC
HDR: HDR 10 supported

Connectivity

Signal Input: HDMI 2.0 x 2, DisplayPort 1.4 x 1
Sync Input: Separate Sync
Audio (In/Out): Audio out
HDCP: HDCP 1.4 (HDMI / DisplayPort), HDCP 2.2 (HDMI / DisplayPort)
USB Hub: USB 3.2 Gen 1 / 5 Gbps, USB-B upstream x 1, USB-A downstream x 4 (with 2 for fast charge B.C 1.2)

Convenience

Plug & Play Compatibility: DDC/CI, Mac OS X, sRGB, Windows 11 / 10 / 8.1 / 8
User convenience: Power On/Off, Menu/OK, Input/Up, Game Settings/Down, SmartImage game/Back

OSD Languages: Brazil Portuguese, Czech, Dutch, English, Finnish, French, German, Greek, Hungarian, Italian, Japanese, Korean, Polish, Portuguese, Russian, Spanish, Simplified Chinese, Swedish, Turkish, Traditional Chinese, Ukrainian
Other convenience: Kensington lock, VESA mount (100x100mm)

Stand

Height adjustment: 130 mm
Pivot: -/+ 90 degree
Swivel: -/+ 30 degree
Tilt: -5/20 degree

Power

Power supply: Internal, 100-240VAC, 50-60Hz
Off mode: 0.3 W (typ.)
On mode: 18.7 W (typ.)
Standby mode: 0.5 W (typ.)
Power LED indicator: Operation - White, Standby mode- White (blinking)

Dimensions

Packaging in mm (WxHxD): 730 x 420 x 188 mm
Product without stand (mm): 557 x 331 x 64 mm
Product with stand(max height): 557 x 508 x 239 mm

Weight

Product with packaging (kg): 7.60 kg
Product with stand (kg): 4.64 kg
Product without stand (kg): 3.30 kg

Operating conditions

Altitude: Operation: +12,000ft (3,658m), Non-operation: +40,000ft (12,192m)
Temperature range (operation): 0°C to 40 °C
MTBF: 50,000 (Excluded backlight) hour(s)
Relative humidity: 20%-80 %
Temperature range (storage): -20°C to 60 °C

Sustainability

Environmental and energy: RoHS
Recyclable packaging material: 100 %
Specific Substances: Mercury free, PVC / BFR free housing

Compliance and standards

Regulatory Approvals: CB, FCC Class B, ICES-003, CE Mark, CCC, CEC, CEL, TUV/ISO9241-307, TUV-BAUART

Cabinet

Color: Dark Slate
Finish: Textured



* "IPS" word mark / trademark and related patents on technologies belong to their respective owners.
 * The maximum resolution works for DP input only.
 * For best output performance, please always ensure that your graphic card is capable of achieving the maximum resolution and refresh rate of this Philips display.
 * Response time value equal to SmartResponse
 * Smart MBR is to adjust brightness for blur reduction, so cannot adjust brightness while smart MBR is turned on. To reduce motion blur, LED backlight will strobe synchronously with screen refresh, which may cause noticeable brightness change
 * Smart MBR is gaming-optimized mode. Turn on Smart MBR may cause noticeable screen flickering. It is recommended to turn off when you are not using the gaming function.
 * 2020 Advanced Micro Devices, Inc. All rights reserved. AMD, the AMD Arrow logo, AMD FreeSync™ and combinations thereof are trademarks of Advanced Micro Devices, Inc. Other product names used in this publication are for identification purposes only and may be trademarks of their respective companies.
 * NVIDIA® G-SYNC® support interface: DisplayPort
 * Make sure to update NVIDIA® G-SYNC® driver to the latest version, see more information on NVIDIA website: <https://www.nvidia.com/>
 * Make sure your graphic card supports NVIDIA® G-SYNC®
 * The monitor may look different from feature images.
 * Adobe RGB and DCI-P3 Coverage based on CIE1976, sRGB Area based on CIE1931, NTSC Area based on CIE1976.