

PHILIPS



Cordless epilator;
Wet & Dry

Epilator Series 9000

Wet and Dry use

For face, body, bikini

More than an epilator

9 attachments in total



BRE729/00

Hi Smooth. Versatile. Gentle Body Care.

Free from hair removal routine for up to 4 weeks.

Our most efficient epilator, your smoothest skin. Introducing the world's first epilator with ProGuide with 360° visibility for efficient and gentle results. More than an epilator. Your all-in-one hair removal and body care set.

Our most efficient epilator

- Smoothness for up to 4 weeks
- Efficient and fast. Light it. See it. Catch it.
- 100% showerproof
- Effortless. 60 min on one charge. Cord-free.
- Buy once. Use for years**

More skin comfort*

- ProGuide. Less pain, more skin comfort*

Body care routine beyond epilation

- More than an epilator: Hi body care.
- Exfoliation helps reveal softer skin

Gentle care

- No fuzz. No fuss. With Facial Hair Remover.
- Gentle shave for sensitive areas.
- Confidence starts here: Trim and shape your way

Epilator Series 9000

Cordless epilator; Wet & Dry

BRE729/00

Highlights

Smoothness for up to 4 weeks



Enjoy being free from a hair removal routine. No more waiting for hair to grow: removes hair 3 times shorter than wax.

Less pain, more skin comfort*



World's first epilator with ProGuide with 360° visibility for efficient and gentle results. ProGuide perfects your 75° epilation angle for best results and keeps your skin tight for more skin comfort. 360° LED light helps you spot and remove more hairs.

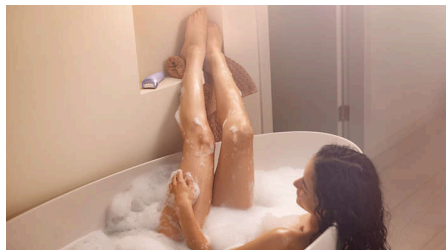
Efficient and fast



Efficient and fast results with Double-Action Technology. Catches even the shortest hair with ceramic tweezers. Grips and removes hairs as

short as 0.5 mm. No need to press. Simply glide. Integrated LED light makes sure that no hair hides from you. Get it done in less than 6 mins on both lower legs.

Hi body care.



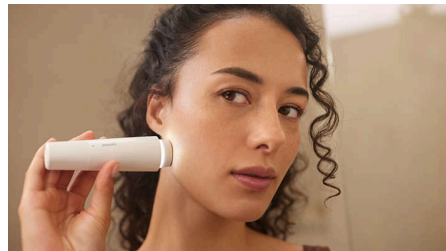
Enjoy your everything shower and self-care moment at home - from hair removal to full-body care.

Wet & Dry



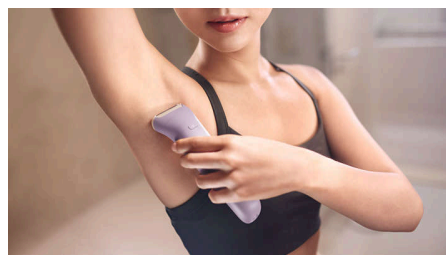
From the shower to the sink - epilate wet or dry, your choice, your convenience. Warm water relaxes your skin and makes the treatment more comfortable. Handle with non-slip patterns improves the grip in the shower.

Easy facial hair removal



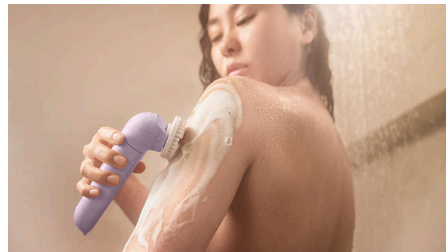
Experience a close but gentle facial hair shave. Designed for optimal performance, with a full circle light and mirror.

Gentle Shave



Complete your hair removal routine for sensitive areas with an extra shaver head and trimming comb. Prevent nicks and cuts.

Exfoliation for softer skin



Gently exfoliates to smooth skin and help prevent ingrown hairs - with less effort than manual exfoliation alone.

Epilator Series 9000

Cordless epilator; Wet & Dry

BRE729/00

Highlights

Trim and shape your way



Trim and shape with confidence - personalise your bikini routine with the included trimming head and comb.

More powerful battery



Stay powered for 60 min on one charge. No interruptions. No cord holding you back - effortlessly reach every spot. New design comes with a matt finishing and non-slip patterns for improved grip in the shower.

Buy once. Use for years**



A one-time purchase that lasts for years.

Epilator Series 9000

Cordless epilator; Wet & Dry

BRE729/00

Specifications

Accessories

Body Exfoliation Brush
Pouch
Bikini trimmer head
Bikini trimmer comb
Trimming Comb
Facial Hair Remover
Epilator head
ProGuide
Shaving head

Power

Battery type: Li-Ion
Charging: 3 hours
Quick charge
Battery usage time: 60 minutes

Technical specifications

Voltage: 5 V/1.5 A
Number of tweezers: 32
USB-A cable

Tweezing actions speed 1: 64,000 per minute
Tweezing actions speed 2: 70,400 per minute
Power adapter: No

Features

Speed settings: 2

Ease of use

Cordless
Wet and Dry use
LED light

