

# PHILIPS

## EVNIA



QD OLED gaming  
monitor

4K UHD gaming monitor

Evnia 8000

26.5" (67.3cm)

3840 x 2160 (4K UHD)



27M2N8800

## Gaming beyond innovation

This monitor produces incredible visuals. Its QD OLED panel is matched with 4K UHD resolution and Display HDR TrueBlack 400 certification, which makes it an absolute powerhouse of visual quality, even at 240Hz.

### Features designed for gamers needs

- Stark ShadowBoost: for enhancing visibility in dark scenes
- Protects and cools QD-OLED displays to reduce burn-in
- Evnia Precision Center: Maximize Your Gaming Experience
- Smart Sniper: Improved control when you zoom in on targets
- AI-enhanced Ambiglow: for intensified entertainment
- Built-in stereo speakers for multimedia
- LowBlue mode and Flicker-free easy-on-the eyes viewing
- Smart Crosshair: for better aim and more fun

### Built for fast action

- AMD FreeSync™ Premium Pro; smooth, low latency HDR gaming
- Ultra-fast 240 Hz refresh rate for virtually lag-free gaming
- Certified NVIDIA® G-SYNC® compatible for smooth fast gaming

### Immersive visuals

- QD OLED for superior colors and vibrant visuals

# 4K UHD gaming monitor

QD OLED gaming monitor

27M2N8800/96

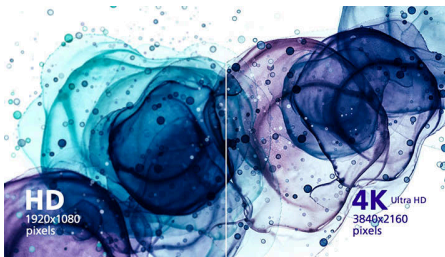
## Highlights

### Ultra-fast 240 Hz refresh rate



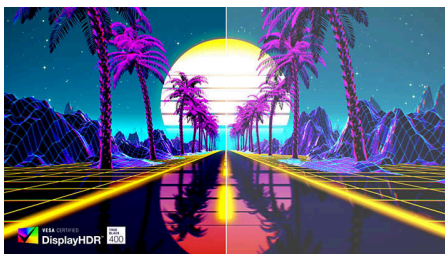
While playing the most intense engaging action-oriented games, ultra-fast 240 Hz refresh rate enhances an ultra-smooth, lag-free gaming experience. This Philips display redraws the screen image up-to 240 times per second, effectively faster than a standard display. Especially for fast-paced games like FPS and racing games, 240 Hz gives a superior motion and clarity visuals. With Philips 240 Hz display, action sequences in gameplay look judder-free and ghost-free. You will experience deeper immersion and feeling alive in game.

### UltraClear 4K UHD resolution



These Philips displays utilize high performance panels to deliver UltraClear, 4K UHD (3840 x 2160) resolution images. Whether you are demanding professional requiring extremely detailed images for CAD solutions, using 3D graphics applications or a financial wizard working on huge spreadsheets, Philips displays will make your images and graphics come alive.

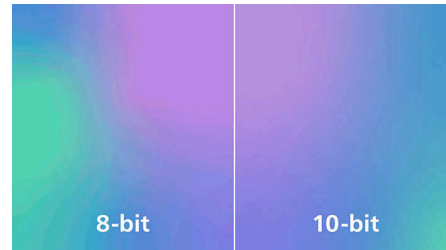
### DisplayHDR™ True Black 400



This Philips monitor is certified with VESA DisplayHDR™ True Black 400. Delivering stunningly accurate shadow detail with deeper

blacks for a remarkable visual experience compared with conventional monitors of the same peak luminance. This Philips monitor comes with several HDR modes, each optimized for your usage scenarios: HDR Game, HDR Movie, HDR Photo, and VESA DisplayHDR certified level.

### True 10-bit color depth



With this Philips true 10-bit color display, you can see color critical professional work of exceptional color accuracy and meeting professional standards. Compared with conventional 8-bit color display, this Philips monitor produces a more natural transition between hues for smoother gradients.

### QD OLED technology



QD-OLED represents a hybrid approach that marries the OLED panels and quantum dot technology. By combining what's best of both, QD-OLED guarantees high contrast, deep blacks, and unlimited viewing angles, with the higher peak brightness and more vibrant colors.

### LowBlue mode & Flicker-free



Our LowBlue Mode and Flicker-free technology have been developed to reduce eye strain and fatigue often caused by long hours in front of a monitor.

### AI-enhanced Ambiglow



Our AI-enhanced processor analyzes the incoming image content and continuously adapts the color and brightness of the emitted light to match the image. This feature adds a new dimension to your viewing experience. The innovative Ambiglow uses its AI capabilities to create a truly immersive and customizable gaming experience. From filling your gaming room with color to feeling like you are part of the game, the AI-enhanced Ambiglow is made to make your gaming experience the best it's ever been by combining intelligence, color, and light.

### Built-in stereo speakers



A pair of high quality stereo speakers built into a display device. It can be visible front firing, or invisible down firing, top firing, rear firing, etc depending on model and design.



LowBlue Mode



Built-in Speaker



Cooling shield

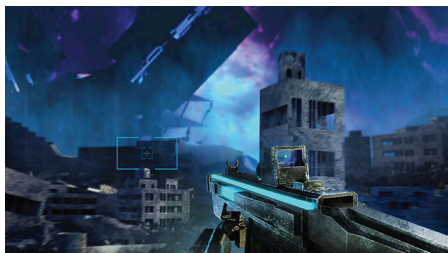
# 4K UHD gaming monitor

QD OLED gaming monitor

27M2N8800/96

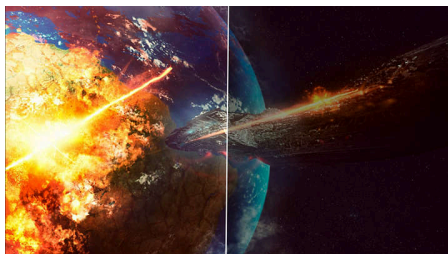
## Highlights

### Smart Crosshair



Color of Crosshair is set by default. When Smart Crosshair is on, the color will change as complementary color to the background color. Smart Crosshair enhances the accuracy of aiming so you can spot the enemies more easily.

### Stark ShadowBoost



This feature enhances dark scenes without overexposing lightened areas. The Stark Shadowboost feature has three selectable levels that offer texturized images with better color saturation with higher contrast so you can see better in both light and dark environments. In addition, this feature helps you fine-tune your sight so that enemies get exposed more quickly when gaming.

### Cooling shield



Burn-in is a real concern for users of QD-OLED screens. To increase the lifespan of your display, this monitor has an integrated graphene shield

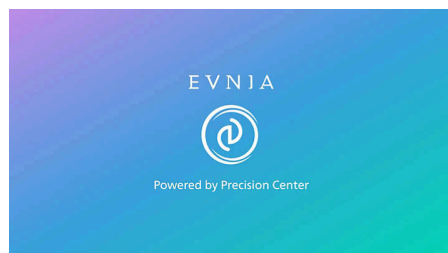
which keeps your display cool. The graphene evenly disperses heat generated by the blue-light emitted from your screen and cools more effectively than graphite. For gamers, this means you can play at the brightness level you prefer with a reduced risk for burn-in, and a display which stays pixel-perfect for longer.

### Smart Sniper



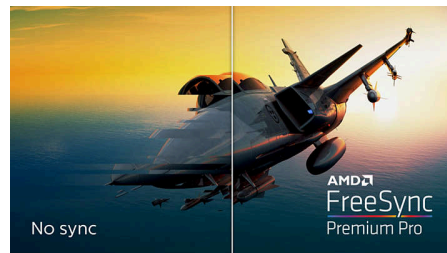
Smart Sniper gives you better control over your scope for precise aiming. It overlays an additional window at either the top or center of your screen, and enables you to select a zoom level up to 2.0x your normal magnification.

### Evnia Precision Center



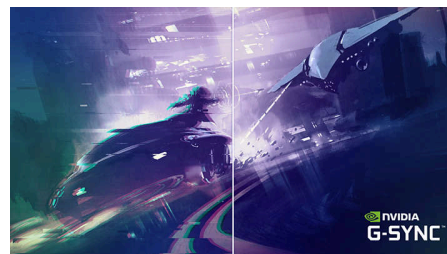
Evnia Precision Center is an easy-to-use software designed to optimize and personalize your Evnia monitor. Whether you're a casual or competitive gamer, it offers a wide range of customization options to match your unique gaming style. With intuitive controls and seamless navigation, Evnia Precision Center gives you full control, providing everything you need to elevate your gaming to the next level—right at your fingertips.

### AMD FreeSync™ Premium Pro



Gaming shouldn't be a choice between choppy gameplay or broken frames. AMD FreeSync™ Premium Pro provides the true HDR gaming experience: a combination of smooth gaming at peak performance, and exceptional high dynamic range visuals while still maintaining low latency.

### NVIDIA® G-SYNC® compatible



When playing intense games with high refresh rates, screen tearing may appear without optimal graphics synchronization. This Philips display is certified as NVIDIA® G-SYNC® compatible, reducing screen tearing and syncing your monitor's refresh rate with your graphic card's output for a smoother gaming experience. Scenes appear instantly, objects look sharper, and gameplay is smooth, giving you a stunning visual experience and a serious competitive edge.



# 4K UHD gaming monitor

QD OLED gaming monitor

27M2N8800/96

## Specifications

### Picture/Display

**Panel Size:** 26.5"/67.3cm  
**Aspect ratio:** 16:9  
**Monitor Panel Type:** QD OLED  
**Pixel pitch:** 0.153x0.153mm  
**Brightness:** SDR: 250 (APL 100%) nit, HDR: 450 (APL 10%) nit, HDR E/P: 1000 (APL 3%) nit  
**Display colors:** 1.07B (10bits)  
**Color gamut (typical):** Adobe RGB 97.6%; DCI-P3:99%, sRGB: 145%, NTSC 118%\*  
**Contrast ratio (typical):** 1,500,000:1  
**SmartContrast:** Mega Infinity DCR  
**Response time (typical):** 0.03 ms (Gray to Gray)\*  
**Viewing angle:** 178° (H) / 178° (V), @ C/R > 10000  
**Picture enhancement:** SmartImage game  
**Maximum resolution:** 3840x2160 @ 240 Hz (HDMI/DP)  
**Effective viewing area:** 589.97(H)x332.93(V)mm  
**Scanning Frequency:** 30 - 510 kHz (H) / 48 - 240 Hz (V)  
**sRGB**  
**Delta E:** <2 (sRGB)  
**Flicker-free**  
**Pixel Density:** 166 PPI  
**LowBlue Mode**  
**Display Screen Coating:** Anti-reflection, 2H  
**AMD FreeSync™ technology:** Premium Pro G-SYNC  
**HDR:** DisplayHDR True Black 400 certified  
**Pixel format:** RGB Q-Square\*  
**Clear MR Tier:** 13000  
**Smart Sniper**  
**Stark Shadow Boost**  
**Windows Dynamic Lighting**  
**Smart Crosshair**  
**Shadow Boost**

### Connectivity

**Signal Input:** HDMI 2.1 x 2, DisplayPort 2.1 x 1  
**Sync Input:** Separate Sync  
**Audio (In/Out):** Headphone out  
**HDCP:** HDCP 1.4 (HDMI / DisplayPort), HDCP 2.3 (HDMI / DisplayPort)  
**USB Hub:** USB 3.2 Gen 1 / 5 Gbps, USB-B upstream x 1, USB-A downstream x 2 (with 1 for fast charge B.C 1.2)

### Convenience

**Built-in Speakers:** 5 W x 2  
**Plug & Play Compatibility:** DDC/CI, Mac OS X, sRGB, Windows 11 / 10

**User convenience:** Power On/Off, Menu/OK, Input/Up, Game Settings/Down, SmartImage game/Back  
**OSD Languages:** Brazil Portuguese, Czech, Dutch, English, Finnish, French, German, Greek, Hungarian, Italian, Japanese, Korean, Polish, Portuguese, Russian, Spanish, Simplified Chinese, Swedish, Turkish, Traditional Chinese, Ukrainian  
**Other convenience:** Kensington lock, VESA mount (100x100mm), VESA bracket  
**MultiView:** PIP/PBP mode, 2x devices  
**Low blue light:** Low blue light compliance\*  
**Ambiglow:** Ambiglow 3 sided

### Stand

**Height adjustment:** 130 mm  
**Swivel:** -/+ 30 degree  
**Tilt:** -5/20 degree

### Power

**Power supply:** Internal, 100-240VAC, 50-60Hz  
**Off mode:** 0.3 W (typ.)  
**On mode:** 88 W (typ.)  
**Standby mode:** 0.5 W (typ.)  
**Power LED indicator:** Operation - White, Standby mode - White (blinking)

### Dimensions

**Packaging in mm (WxHxD):** 780 X 445 X 141 mm  
**Product without stand (mm):** 609 X 358 X 61 mm  
**Product with stand(max height):** 609 X 514 X 275 mm

### Weight

**Product with packaging (kg):** 10.8 kg  
**Product with stand (kg):** 7.14 kg  
**Product without stand (kg):** 5.81 kg

### Operating conditions

**Altitude:** Operation: +12,000ft (3,658m), Non-operation: +40,000ft (12,192m)  
**Temperature range (operation):** 0°C to 40 °C  
**MTBF:** 30,000 hour(s)  
**Relative humidity:** 20%-80 %  
**Temperature range (storage):** -20°C to 60 °C

### Sustainability

**Environmental and energy:** RoHS  
**Recyclable packaging material:** 100 %  
**Post consumer recycled plastics:** 35%\*

### Compliance and standards

**Regulatory Approvals:** CB, CE Mark, PSB, PSE, KC, CEL, CCC, BSMI, VCCI, UKCA, EMF, FCC, ICES-003

### Cabinet

**Color:** White  
**Finish:** Textured

### Design

Designed in Amsterdam, NL



\* Pixel Information: Active pixels are 3856(H) x 2176(V), total pixels are 3856(H) x 2176(V), with extra pixels reserved on each side for pixel orbiting.  
\* Response time value equal to SmartResponse. The measurement pattern is 1 horizontal line.  
\* For best output performance, please always ensure that your graphic card is capable of achieving the maximum resolution and refresh rate of this Philips display.  
\* Adobe RGB and DCI-P3 Coverage based on CIE1976, sRGB Area based on CIE1931, NTSC Area based on CIE1976.  
\* The ratio of display emission light in the range from 415 - 455 nm to the display emission of 400 - 500 nm shall be less than 50%.  
\* This monitor strives for sustainability: the base cover and headphone holder are made with 35% recycled plastic.  
\* The monitor may look different from feature images.  
\* The products and accessories listed on this leaflet may differ by country and region.  
\* 2020 Advanced Micro Devices, Inc. All rights reserved. AMD, the AMD Arrow logo, AMD FreeSync™ and combinations thereof are trademarks of Advanced Micro Devices, Inc. Other product names used in this publication are for identification purposes only and may be trademarks of their respective companies.  
\* NVIDIA® G-SYNC® support interface: DisplayPort.  
\* Make sure to update NVIDIA® G-SYNC® driver to the latest version, see more information on NVIDIA website: <https://www.nvidia.com/>  
\* Make sure your graphic card supports NVIDIA® G-SYNC®.