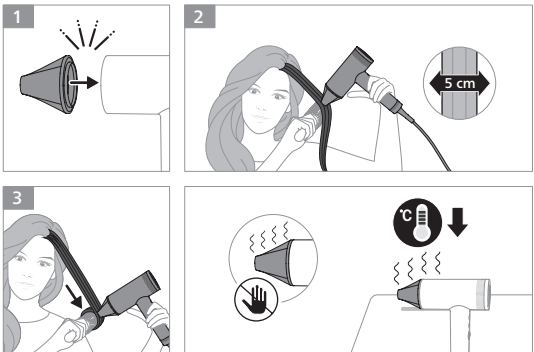
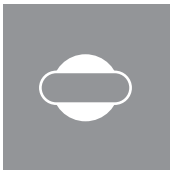
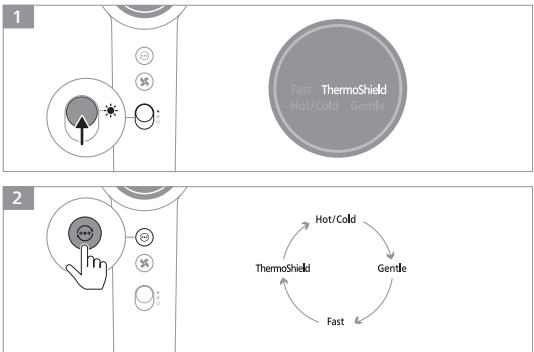


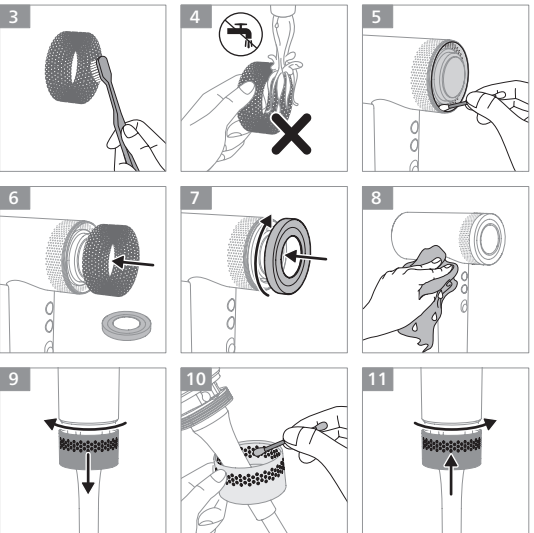
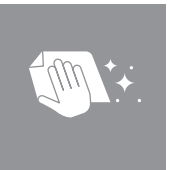
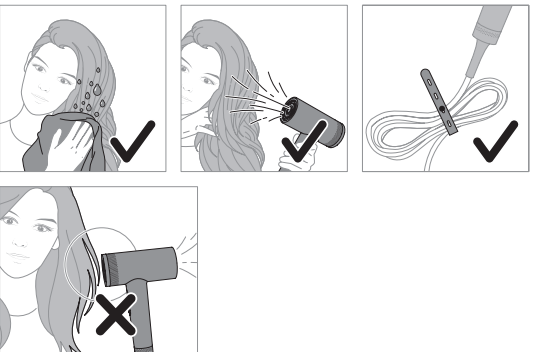
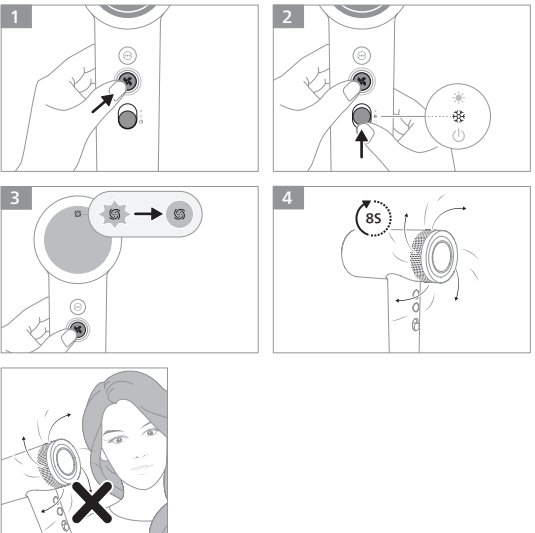
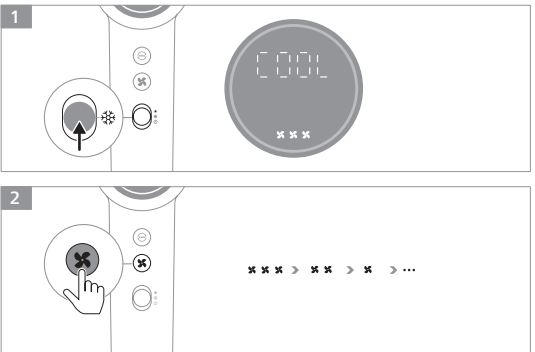
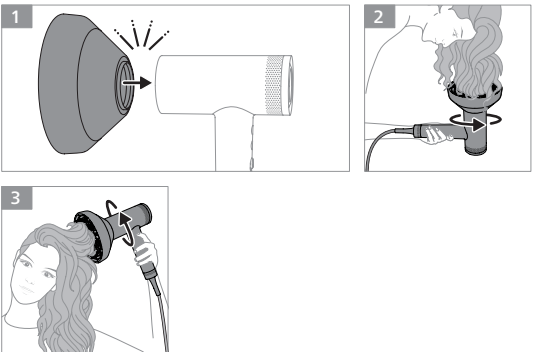
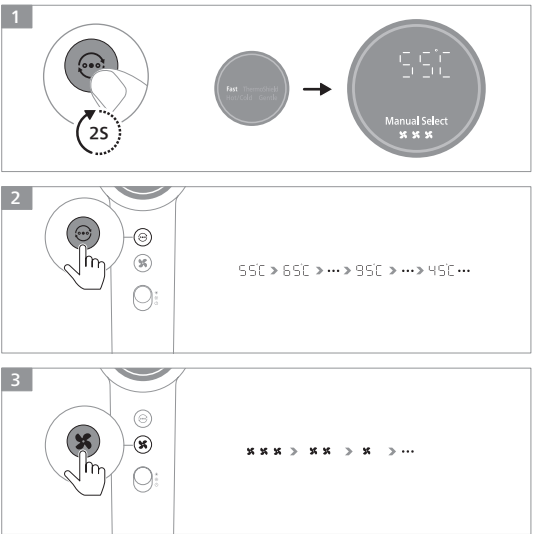
Specifications are subject to change without notice  
© 2025 Koninklijke Philips N.V.  
All rights reserved.

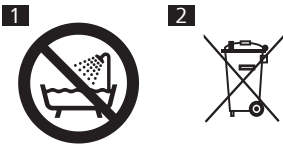
3000.163.5578.1 ( 22/09/2025 )

## Preset Mode



## Manual Select





English

## Introduction

Congratulations on your purchase and welcome to Philips! To fully benefit from the support that Philips offers, register your product at [www.philips.com/welcome](http://www.philips.com/welcome).

## Important safety information

Read this important information carefully before you use the appliance and save it for future reference.

## Warning

- This appliance can be used by children aged from 8 years and above and persons with reduced physical, sensory or mental capabilities or lack of experience and knowledge if they have been given supervision or instruction concerning use of the appliance in a safe way and understand the hazards involved. Children shall not play with the appliance. Cleaning and user maintenance shall not be made by children without supervision.
- When the appliance is used in a bathroom, unplug it after use since the proximity of water presents a hazard, even when the appliance is switched off.
- For additional protection, we advise you to install a residual current device (RCD) in the electrical circuit that supplies the bathroom. This RCD must have a rated residual operating current not higher than 30mA. Ask your installer for advice.
- WARNING: Do not use this appliance near bathtubs, showers, basins or other vessels containing water (Fig. 1).
- The supply cord cannot be replaced. If the supply cord is damaged, you must have the appliance replaced by Philips, a service center authorized by Philips or similarly qualified persons in order to avoid a hazard.
- WARNING: Do not use this appliance near water.
- Always unplug the appliance after use.
- Do not pull on the supply cord after using. Always unplug the appliance by holding the plug.
- Before you connect the appliance, ensure that the voltage indicated on the appliance corresponds to the local power voltage.
- Do not use the appliance for any other purpose than described in the user manual.
- Do not use the appliance on artificial hair.
- When the appliance is connected to the power, never leave it unattended.
- Never use any accessories or parts from other manufacturers or that Philips does not specifically recommend. If you use such accessories or parts, your warranty becomes invalid.
- Do not wind the supply cord around the appliance.
- Wait until the appliance has cooled down before you store it.
- Do not operate the appliance with wet hands.
- Always return the device to a service center authorized by Philips for examination or repair. Repair by unqualified people could cause an extremely hazardous situation for the user.

- Do not connect the appliance with a plug adapter. If really necessary, only use a certified plug adapter.
- If the appliance overheats, it switches off automatically. Unplug the appliance and let it cool down for a few minutes. Before you switch the appliance on again, check the grilles to make sure they are not blocked by fluff, hair, etc.
- Do not insert metal objects into the air grilles to avoid electric shock.
- Never block the air grilles.

## Electromagnetic fields (EMF)

This Philips appliance complies with all applicable standards and regulations regarding exposure to electromagnetic fields.

## Recycling

- This symbol means that electrical products shall not be disposed of with normal household waste (Fig. 2).
- Follow your country's rules for the separate collection of electrical products.

## Overview

- 1 Manual button
- 2 Speed button
- 3 Ring of the handle
- 4 Power on/off switch
- 5 Manual Select
- 6 Auto-clean mode
- 7 Speed setting
- 8 Foam
- 9 Air inlet grille cover
- 10 Diffuser
- 11 Nozzle

## Dry your hair

When the dryer is plugged in without switching on, it will automatically enter standby mode. The dryer's handle might have some warmth after a while, which is normal and safe to use.

When the appliance is powered on, ions are automatically and continuously dispensed, reducing frizz and providing additional shine.

- 1 Connect the plug to a power supply socket.
- 2 Attach the nozzle or diffuser onto the hairdryer for precise drying.

### Do not touch/remove the accessory until it cools down.

- 3 To enhance volume for curls and bouncy style, attach the diffuser onto the hairdryer. Insert the pins into your hair to touch your scalp and make rotating movements.
- 4 Slide the power on/off button to . Press and hold the mode button for 2 seconds to switch between Preset and Manual Select.
- 5 In Preset mode, press the mode button to select your desired setting according to the instructions as below:  
**Fast:** Dry shower-wet hair quickly.  
**ThermoShield:** Dry your hair at a constant caring temperature.  
**Hot/Cold:** Care for your hair with an alternating hot and cool airflow.  
**Gentle:** Dry your hair at a mild temperature for a gentle experience, especially soothing for your scalp.

- 6 In Manual Select, you can press mode or speed button momentarily to adjust temperature and speed as preferred.
  - 7 Switch the power on/off button to and you will see COOL on display. Press the speed button as preferred to fix your style.
  - The hairdryer comes with memory feature, it can remember the last used settings.
- After use:**
- 1 Switch off the appliance and cool down the dryer. Remove the nozzle or diffuser if necessary.
  - 2 Clean the appliance with a damp cloth.
  - 3 It is suggested to use the auto-cleaning mode once a month. To activate the clean mode, PRESS and HOLD the speed button and push the slider to COOL mode until the auto-cleaning mode is activated.
  - The auto-cleaning process will last for 8 seconds and then switch to COOL mode automatically.
  - Switch off the appliance after the auto-cleaning process is completed.
  - To stop the auto-cleaning process, you can switch the slider to OFF position immediately.
- 4 Unscrew the air inlet grille cover to remove hair and dust, and use a toothbrush to gently clean the foam. Make sure to put the foam back.

### Do not rinse the foam under tap water.

## Troubleshooting

Problem	Cause	Solution
The appliance does not work at all.	The power socket to which the appliance has been connected may be broken.	Check the appliance is plugged in correctly. Check the fuse for this power socket in your home.
	The appliance may have overheated and switched itself off.	Unplug the appliance and let it cool down for a few minutes. Before you switch on the appliance again, check the grilles to make sure they are not blocked by fluff, hair, etc.
	The appliance may not be suitable for the voltage to which it has been connected.	Ensure that the voltage indicated on the type plate of the appliance corresponds to the local power voltage.

Problem	Cause	Solution
There is bad smell for the first-time of use.	The smell may come from the new appliance.	The smell will gradually disappear after a few uses. Please try to dry/style your hair in a well-ventilated room.
There is burning smell when drying/ styling my hair.	If there is some dust or residue left in the appliance, it may be burnt due to the high temperature and produce odor.	Turn off the appliance and wait until it cools down. Check if any residues left. Remove dirt from the air inlet grille and keep it clean regularly.
I hear annoying noise when using auto-clean mode.	The motor setting is different under auto-clean mode.	Use auto-clean mode once a month to avoid blocking.

### Error code and solution

**A01:** Check if the dryer is plugged in correctly.  
**A02:** Try to unplug and then plug in again see if the appliance works properly, or contact Philips for help.  
**A03:** Try to unplug and then plug in again see if the appliance works properly, or contact Philips for help.  
**A04:** Unplug the appliance and clean the dust on air inlet grille of the handle. Turn on the appliance again only when it cools down completely.  
**E4-E10:** Please contact Philips for help.

## Support

For all product support, please visit [www.philips.com/support](http://www.philips.com/support)  
The product is in conformance with the restriction of hazardous substances requirement as per the India E-Waste Rule 2022.



Always there to help you

Visit us at [www.philips.co.in](http://www.philips.co.in)  
Contact at: 1800 102 2929  
Or [customercare.india@philips.com](mailto:customercare.india@philips.com)

PHILIPS

## Warranty card

Serial No.:

Dealer's Name: \_\_\_\_\_

Dealer's Stamp: \_\_\_\_\_

Customer's Name and Address: \_\_\_\_\_

Model No. \_\_\_\_\_

Bill No. \_\_\_\_\_ Amount: \_\_\_\_\_

Date of Purchase

Dealer Signature

### Warranty and Service

For any information or problem, contact your local Philips dealer or authorized service center.  
For a list of authorized Philips service centers visit: [www.philips.co.in](http://www.philips.co.in) or contact our consumer care at 1800 102 2929 (Toll free)

All consumables and parts susceptible to normal wear and tear are not covered under warranty.

### Warranty Card

This apparatus is covered under warranty against any defect due to defective material or workmanship for TWO YEARS from the date of purchase. Should a defect develop during the period of warranty, PHILIPS INDIA LTD. undertakes to repair the apparatus FREE OF CHARGE at any of the Philips authorized Service Centres.

The warranty is not valid in case:

1. Apparatus is not used according to user manual.
2. Defects caused by improper or reckless use.
3. Repairs done by persons other than Philips Authorized service centre.
4. Modifications of any nature made in the apparatus.
5. Tampered serial number.
6. Incomplete warranty card after purchase.
7. Product if used for commercial purpose (i.e. other than domestic use).
8. Usage of parts not recommended by Philips or those made by other manufacturers.

PHILIPS INDIA LIMITED

ECOSPACE BUSINESS PARK, RAJARHAT, 4A, 5<sup>TH</sup> FLOOR, PREMISES,  
AA II, CHAKPACHURIA, NEW TOWN, KOLKATA, NORTH TWENTY-FOUR  
PARGANAS, WEST BENGAL 700156