

PHILIPS

NORELCO



Electric Shaver

Shaver 2100

ComfortCut Blades

4D Flex Heads

One-touch open



S1143/90

Fast, clean shave

Philips Norelco Shaver 2100 Electric Shaver gives you a fast, clean shave at an affordable price. With 27 self-sharpening ComfortCut blades and a pop-up trimmer, it's fully washable for easy use and excellent value.

Easy to use

- Suitable for head shaving
- 40 minutes of cordless shaving from an 8-hour charge
- Waterproof for easy cleaning or shower use
- Pop-up trimmer for your mustache and sideburns
- Battery indicator to know when it's time to charge
- One-touch open for easy cleaning
- Anti-slip grip for a secure shave
- Protective cap keeps the shaving head clean between shaves
- Convenient charging

A clean shave

- ComfortCut Blades for a comfortable, clean shave
- 4D Flex Heads follow your face for a comfortable shave

Sustainable

- Made with care for you and the planet

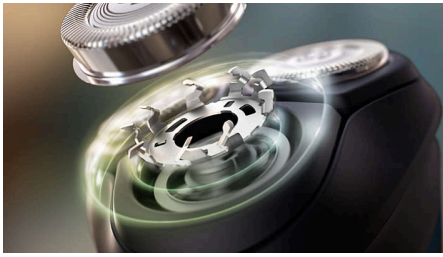
Shaver 2100

Electric Shaver

S1143/90

Highlights

ComfortCut Blades



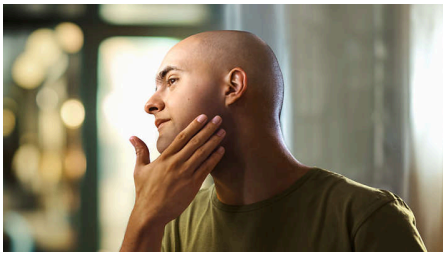
27 self-sharpening blades comfortably cut each hair right above skin level for a smooth, even finish, every time. Our self-sharpening blades stay like new for 2 years.

4D Flex Heads



Floating heads flex in four directions to maintain even contact with your skin protecting it from nicks & cuts.

Suitable for head shaving



The shaver is designed to be a versatile solution that allows you to confidently shave both your face and head

One-touch open



The shaver head flips open at the touch of a button to rinse clean under running water.

Pop-up trimmer



Refine and define your mustache and sideburns to complete your look with the pop-up trimmer.

40 minutes of cordless shaving



A durable NiMH battery provides 40 minutes of shaving power on an 8h charge. That's good for about 13 shaves.

Rubber grip



Never lose your grip. The ergonomic handle with rubber stays secure and comfortable, even when wet.

Waterproof (IPX7)



Rinse under running water or shave in the shower. The IPX7 waterproofness rating means it can be submerged in one meter of water for up to 30 minutes.

Battery indicator



Don't get caught with an empty battery. The battery indicator lets you know if the battery is low, empty, or charging.

Shaver 2100

Electric Shaver

S1143/90

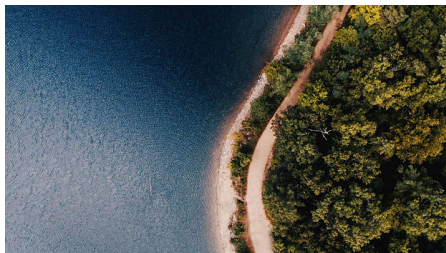
Highlights

USB-A Charging



At Philips, we drive sustainability in all aspects of product creation. Our ambition is to reduce waste and minimize the number of USB adaptors we put in the market. Should you need an adapter, a suitable supply unit is available via: www.philips.com/support

Made with care for the planet



The packaging of this shaver is plastic-free and made out of 90% recycle material, while our blade production facility uses 100% renewable electricity.

Protective cap



Keep the shaving head clean and safe between shaves or when traveling.

Shaver 2100

Electric Shaver

S1143/90

Specifications

Accessories

Maintenance: Protective cap

Pop-up trimmer included

Power

Charging time: 8 hours full charge

Run time: 40 min / 13 shaves

Battery type: NiMH

Design

Handle: Ergonomic grip & handle

Color: Blue Malibu

Service

Replacement head: For best results, replace shaving heads every 24 months. Use SH30 replacement heads, sold separately.

2-year warranty

Shaving Performance

Contour following: 4D Flex Heads

Shaving system: ComfortCut Blade System, 27 self-sharpening blades, 55.000 cuts/minute

Ease of use

Cleaning: One-touch open, Fully washable

Display: Charging indicator

Operation: Cordless use only

Waterproof: Waterproof IPX7, Showerproof

