

# PHILIPS



QD OLED gaming  
monitor

Curved Gaming Monitor

Evnia 6000

34" (86.36 cm)

3440 x 1440 (WQHD)



34M2C6500

## Your gaming experience to the utmost

This monitor is built with features that make incredible visuals. With VESA ClearMR 9000 and DisplayHDR TrueBlack 400, this gaming monitor will produce imagery with deep contrast and sharp definition.

### Features designed for gamers needs

- Protects and cools QD-OLED displays to reduce burn-in
- Evnia Precision Center: Maximize Your Gaming Experience
- AI-enhanced Ambiglow: for intensified entertainment
- Dynamic Lighting: Synchronize lighting on all devices.
- MultiView enables simultaneous dual connection and view
- Smart Crosshair: for better aim and more fun

### Built for fast action

- AMD FreeSync™ Premium Pro; smooth, low latency HDR gaming
- SmartImage game mode optimized for gamers
- VESA ClearMR 9000: for the highest-quality of imagery

### Immersive visuals

- Curved display design for more immersive experience
- Ultra Wide-Color wider range of colors for a vivid picture
- CrystalClear images with UltraWide QHD 3440 x 1440 pixels

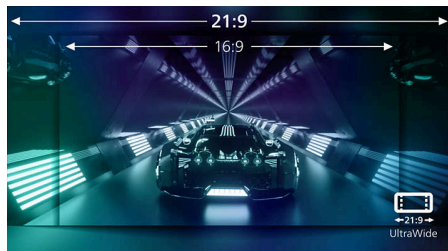
# Curved Gaming Monitor

QD OLED gaming monitor

34M2C6500/75

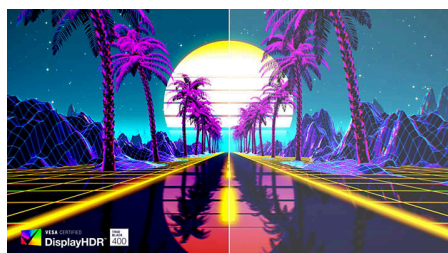
## Highlights

### UltraWide CrystalClear images



These Philips screens deliver CrystalClear, UltraWide Quad HD 3440 x 1440 pixel images. Utilizing high performance panels with high-density pixel count, 178/178 wide viewing angles, these new displays will make your images and graphics come alive. The UltraWide 21:9 format enables more productivity with more room for side-by-side comparisons and more viewable spreadsheet columns. Whether you are demanding professional requiring extremely detailed information for CAD-CAM solutions, or a financial wizard working on huge spreadsheets, Philips displays delivers CrystalClear images.

### DisplayHDR™ True Black 400



This Philips monitor is certified with VESA DisplayHDR™ True Black 400. Delivering stunningly accurate shadow detail with deeper blacks for a remarkable visual experience compared with conventional monitors of the same peak luminance. This Philips monitor comes with several HDR modes, each optimized for your usage scenarios: HDR Game, HDR Movie, HDR Photo, and VESA DisplayHDR certified level.

### Curved display design



Desktop monitors offer a personal user experience, which suits a curve design very well. The curved screen provides a pleasant yet subtle immersion effect, which focuses on you at the center of your desk.

### QD OLED technology



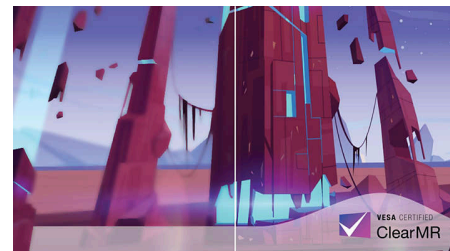
QD-OLED represents a hybrid approach that marries the OLED panels and quantum dot technology. By combining what's best of both, QD-OLED guarantees high contrast, deep blacks, and unlimited viewing angles, with the higher peak brightness and more vibrant colors.

### Ultra Wide-Color Technology



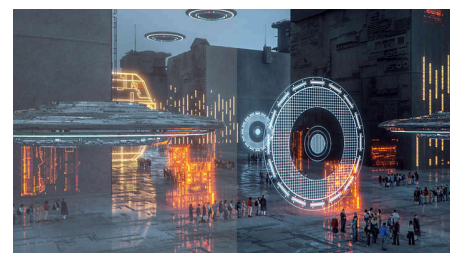
Ultra Wide-Color Technology delivers a wider spectrum of colors for a more brilliant picture. Ultra Wide-Color wider "color gamut" produces more natural-looking greens, vivid reds and deeper blues. Bring, media entertainment, images, and even productivity more alive and vivid colors from Ultra Wide-Color Technology.

### VESA ClearMR 9000



Previously, methods to test blurry imagery were measured through MRPT. VESA Certified ClearMR acts as an alternative to MRPT and blur is tested with a digital high-speed camera. For monitors that are sent in and certified through VESA Certified ClearMR, you can rest assured that you will have an accurate assessment of the monitor's blur quality. Each certification is defined through a CMR range, with the highest tier being VESA ClearMR 9000. With this monitor being certified as ClearMR 9000, it has the highest classification of image quality, meaning the least amount of overall blur.

### SmartImage Game mode



The new Philips gaming display has quick access OSD fine tuned for gamers, offering you multiple options. "FPS" mode (First person shooting) improves dark themes in games, allowing you to see hidden objects in dark areas. "Racing" mode adapts display with fastest response time, high color, along with image adjustments. "RTS" mode (Real time strategy) has a special SmartFrame mode which enables highlighting of specific area and allows for size and image adjustments. Gamer 1 and Gamer 2 enable you to save personal customized settings based on different games, ensuring best performance.



CurvedDisplay



Ultra Wide Color



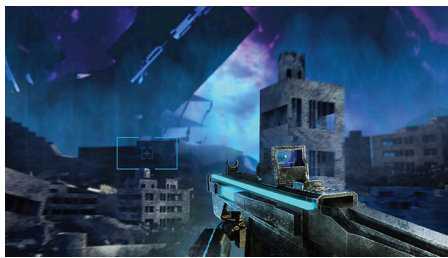
# Curved Gaming Monitor

QD OLED gaming monitor

34M2C6500/75

## Highlights

### Smart Crosshair



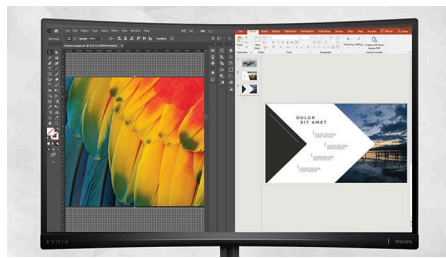
Color of Crosshair is set by default. When Smart Crosshair is on, the color will change as complementary color to the background color. Smart Crosshair enhances the accuracy of aiming so you can spot the enemies more easily.

### AI-enhanced Ambiglow



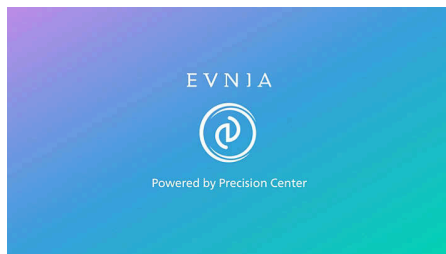
Our AI-enhanced processor analyzes the incoming image content and continuously adapts the color and brightness of the emitted light to match the image. This feature adds a new dimension to your viewing experience. The innovative Ambiglow uses its AI capabilities to create a truly immersive and customizable gaming experience. From filling your gaming room with color to feeling like you are part of the game, the AI-enhanced Ambiglow is made to make your gaming experience the best it's ever been by combining intelligence, color, and light.

### MultiView technology



With the ultra-high resolution Philips MultiView display you can now experience a world of connectivity. MultiView enables active dual connect and view so that you can work with multiple devices like a PC and notebook simultaneously, for complex multi-tasking.

### Evnia Precision Center



Evnia Precision Center is an easy-to-use software designed to optimize and personalize your Evnia monitor. Whether you're a casual or competitive gamer, it offers a wide range of customization options to match your unique gaming style. With intuitive controls and seamless navigation, Evnia Precision Center gives you full control, providing everything you need to elevate your gaming to the next level—right at your fingertips.

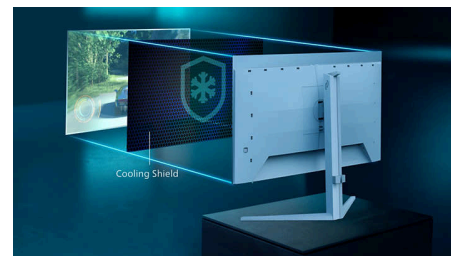
### Dynamic Lighting



This feature is a Microsoft certification program that enables with users Windows 11 to synchronize and manage the RGB lighting of all

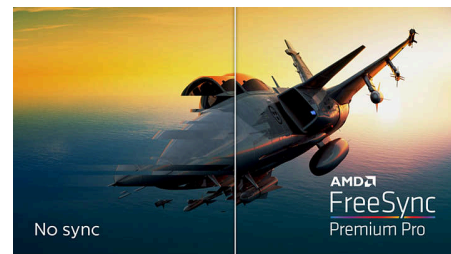
their monitors and peripherals from one menu. By doing this, the Dynamic Lighting feature creates a complete RGB lighting ecosystem with Philips Evnia Ambiglow across all devices that ultimately caters to a customizable user experience.

### Cooling shield



Burn-in is a real concern for users of QD-OLED screens. To increase the lifespan of your display, this monitor has an integrated graphene shield which keeps your display cool. The graphene evenly disperses heat generated by the blue-light emitted from your screen and cools more effectively than graphite. For gamers, this means you can play at the brightness level you prefer with a reduced risk for burn-in, and a display which stays pixel-perfect for longer.

### AMD FreeSync™ Premium Pro



Gaming shouldn't be a choice between choppy gameplay or broken frames. AMD FreeSync™ Premium Pro provides the true HDR gaming experience: a combination of smooth gaming at peak performance, and exceptional high dynamic range visuals while still maintaining low latency.



Cooling shield



# Curved Gaming Monitor

QD OLED gaming monitor

34M2C6500/75

## Specifications

### Picture/Display

**Panel Size:** 34 inch / 86.36 cm

**Aspect ratio:** 21:9

**Monitor Panel Type:** QD OLED

**Pixel pitch:** 0.2315 x 0.2315 mm

**Brightness:** SDR: 250 (APL 100%) nits, HDR: 450 (APL 10%) nits, HDR E/P: 1000 (APL 3%) nit

**Display colors:** Color support 1.07 billion colors (10 bit)\*

**Color gamut (typical):** sRGB 148.8%\*, Adobe RGB 97.8%\*

**Color gamut (min.):** DCI-P3: 99.3%\*

**Contrast ratio (typical):** 1,000,000:1

**SmartContrast:** Mega Infinity DCR

**Response time (typical):** 0.03 ms (Gray to Gray)\*

**Viewing angle:** 178° (H) / 178° (V), @ C/R > 10000

**Picture enhancement:** SmartImage game

**Maximum resolution:** HDMI: 3440 x 1440 @ 100 Hz, DP: 3440 x 1440 @ 175 Hz

**Effective viewing area:** 800.1 (H) x 337.1 (V) - at a 1800R curvature\*

**Scanning Frequency:** HDMI: 30k - 160 kHz (H) / 48 - 100 Hz (V), DP: 30k - 275 kHz (H) / 48 - 175 Hz (V)

**sRGB**

**Delta E:** <2 (sRGB)

**Flicker-free**

**LowBlue Mode**

**Display Screen Coating:** Anti-reflection, 2H

**Low Input Lag**

**EasyRead**

**AMD FreeSync™ technology:** Premium Pro

**HDR:** DisplayHDR True Black 400 certified

**Ambiglow:** 3-sided

**Pixel format:** RGB Q-Stripe\*

**Smart Crosshair**

**Stark ShadowBoost**

**Smart Sniper**

**Shadow Boost**

**MultiView:** PBP/PIP, 2 x devices

**Low blue light:** Low blue light compliance\*

**ClearMR Tier:** 9000

**Windows Dynamic Lighting**

### Connectivity

**Signal Input:** HDMI 2.0 x 2, DisplayPort 1.4 x 1

**Sync Input:** Separate Sync

**Audio (In/Out):** Headphone out

**HDCP:** HDCP 1.4 (HDMI / DisplayPort), HDCP 2.2 (HDMI / DisplayPort)

**USB Hub:** USB 3.2 Gen 1 / 5 Gbps, USB-B upstream x 1, USB-A downstream x 2 (with 1 for fast charge)

### Convenience

**Plug & Play Compatibility:** DDC/CI, Mac OS X, sRGB, Windows 11 / 10

**User convenience:** Power On/Off, Menu/OK, Input/Up, Game Settings/Down, SmartImage game/Back

**OSD Languages:** Brazil Portuguese, Czech, Dutch, English, Finnish, French, German, Greek, Hungarian, Italian, Japanese, Korean, Polish, Portuguese, Russian, Spanish, Simplified Chinese, Swedish, Turkish, Traditional Chinese, Ukrainian

**Other convenience:** Kensington lock, VESA mount (100x100mm), VESA bracket

**MultiView:** PIP/PBP mode, 2x devices

**Low blue light:** Low blue light compliance\*

### Stand

**Height adjustment:** 130 mm

**Swivel:** +/- 30 degree

**Tilt:** -5/20 degree

### Power

**Power supply:** Internal, 100-240VAC, 50-60Hz

**Off mode:** 0.3 W (typ.)

**On mode:** 98.9W (typ.)

**Standby mode:** 0.5 W (typ.)

**Power LED indicator:** Operation - White, Standby mode - White (blinking)

### Dimensions

**Packaging in mm (WxHxD):** 900 x 525 x 226 mm

**Product without stand (mm):** 813 x 367 x

164 mm

**Product with stand(max height):** 813 x 555 x

311 mm

### Weight

**Product with packaging (kg):** 10.64 kg

**Product with stand (kg):** 7.72 kg

**Product without stand (kg):** 6.15 kg

### Operating conditions

**Altitude:** Operation: +12,000ft (3,658m), Non-operation: +40,000ft (12,192m)

**Temperature range (operation):** 0°C to 35 °C

**MTBF:** 30,000 hour(s)

**Relative humidity:** 20%-80 %

**Temperature range (storage):** -20°C to 60 °C

### Sustainability

**Environmental and energy:** RoHS

**Specific Substances:** Mercury free, PVC / BFR free housing

**Post consumer recycled plastics:** 85%\*

**Recyclable packaging material**

### Compliance and standards

**Regulatory Approvals:** CB, CE Mark, ETL,

TUV/ISO9241-307, TUV-BAUART, EAC, EAEU

RoHS, MEPS, PSB, EMF, FCC, ICES-003, CEC, UKCA

### Cabinet

**Color:** Dark Slate

**Finish:** Texture

\* For best output performance, please always ensure that your graphic card is capable of achieving the maximum resolution and refresh rate of this Philips display.

\* The max resolution is 8bits with a 4:4:4 ratio.

\* DCI-P3 Coverage based on CIE1976

\* sRGB Area based on CIE1931

\* Adobe RGB Coverage based on CIE1976

\* Response time value equal to SmartResponse. The measurement pattern is 1 horizontal line.

\* Active pixels: 3440 (H) x 1440 (V). Number of total pixels: 3456 (H) x 1456 (V); extra 8 pixels on each side, space reserved for pixel orbiting.

\* The ratio of display emission light in the range from 415 - 455 nm to the display emission of 400 - 500 nm shall be less than 50%.

\* 10 bits brightness can only be reached with at 144Hz with WQHD resolution through a DisplayPort connection or at 60Hz with WQHD resolution via a HDMI connection.

\* This monitor strives for sustainability: the stand's feet are made with 35% recycled plastic and monitor's chassis is made up of 85% post-consumer recycled plastic.

\* The products and accessories listed on this leaflet may differ by country and region.

\* The monitor may look different from feature images.

\* 2020 Advanced Micro Devices, Inc. All rights reserved. AMD, the AMD Arrow logo, AMD FreeSync™ and combinations thereof are trademarks of Advanced Micro Devices, Inc. Other product names used in this publication are for identification purposes only and may be trademarks of their respective companies.

