

# PHILIPS

## EVNIA



Quad HD gaming  
monitor

Fast IPS Gaming monitor

Evnia 5000

27" (68.5 cm)

2560 x 1440 (QHD)



27M2N5501UK

## Your gaming experience to the utmost

This 27" Fast IPS monitor offers sharp visuals with a 320Hz refresh rate and 0.3ms Smart MBR. Enjoy smooth gameplay and reduced eye strain with Circular Polarization Technology for a high-quality, comfortable gaming experience.

### Features designed for gamers needs

- Stark ShadowBoost: for enhancing visibility in dark scenes
- Circular Polarization Technology: for better eye health
- Smart Sniper: Improved control when you zoom in on targets
- Evnia Precision Center: Maximize Your Gaming Experience
- Smart MBR: for reducing motion blur.
- SoftBlue Technology: for comfortable viewing
- LowBlue mode and Flicker-free easy-on-the eyes viewing
- Smart Crosshair: for better aim and more fun

### Built for fast action

- 320Hz refresh rates for silky-smooth and vivid ima
- 0.3 ms ultra-fast speed for crisp image and smooth gameplay
- Low input lag reduces time delay between devices to monitor

### Immersive visuals

- 1.07 billion colors for stunning color and finest gradations

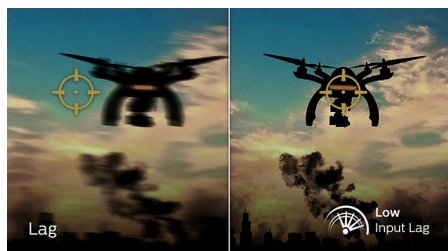
# Fast IPS Gaming monitor

Quad HD gaming monitor

27M2N5501UK/75

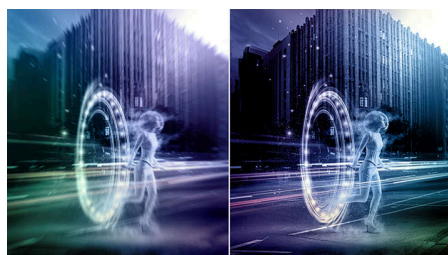
## Highlights

### Low input lag



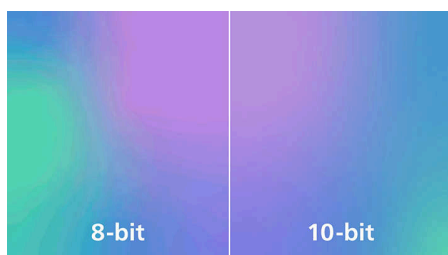
Input lag is the amount of time that elapses between performing an action with connected devices and seeing the result on screen. Low input lag reduces the time delay between entering a command from your devices to monitor, greatly improve on playing twitch-sensitive video games, particularly important to whom plays fast-paced, competitive games.

### 0.3 ms Smart MBR fast response



Philips display with 0.3 ms Smart MBR effectively eliminates smearing and motion blur, delivers shaper and precise visuals to enhance gaming experience. Fast-moving action and dramatic transitions will be rendered smoothly. Best choice for playing thrilling and twitch-sensitive games.

### 1.07 billion colors



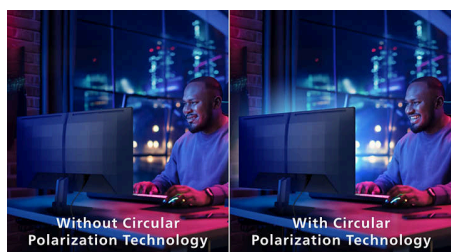
This display delivers outstanding color depth with 1.07 billion colors, and the finest gradation, for re-creating smooth, precise, and vivid image. Enjoy accurate and true-to-life visuals whether gaming, watching videos, or working on color critical work with graphics applications.

### LowBlue mode & Flicker-free



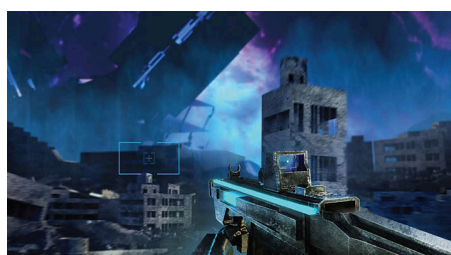
Our LowBlue Mode and Flicker-free technology have been developed to reduce eye strain and fatigue often caused by long hours in front of a monitor.

### Circular Polarization Technology



Circular Polarization uses natural light simulation to filter harmful blue light more effectively, reducing eye strain and fatigue. Unlike traditional screens, it activates more of the eye's natural defenses, offering a smoother, healthier viewing experience. For gamers, this means longer, more immersive play with less discomfort, with faster focus recovery, and reduced eye fatigue—ideal for intense sessions and peak performance.

### Smart Crosshair



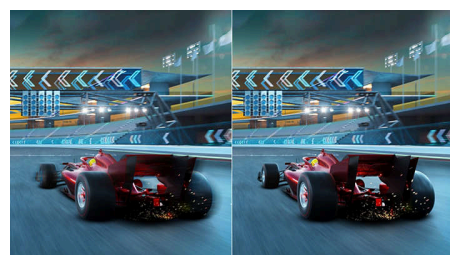
Color of Crosshair is set by default. When Smart Crosshair is on, the color will change as complementary color to the background color. Smart Crosshair enhances the accuracy of aiming so you can spot the enemies more easily.

### Stark ShadowBoost



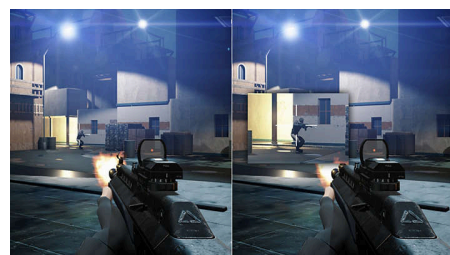
This feature enhances dark scenes without overexposing lightened areas. The Stark Shadowboost feature has three selectable levels that offer texturized images with better color saturation with higher contrast so you can see better in both light and dark environments. In addition, this feature helps you fine-tune your sight so that enemies get exposed more quickly when gaming.

### Smart MBR



In an effort to reduce motion blur, this monitor's LED backlight will work simultaneously with the refresh rate to control brightness levels for the best picture clarity. Please note that Smart MBR is a type of gaming mode and it is recommended to turn the function off when not gaming as it may cause screen-flickering.

### Smart Sniper



Smart Sniper gives you better control over your scope for precise aiming. It overlays an additional window at either the top or center of your screen, and enables you to select a zoom level up to 2.0x your normal magnification.



Low Input Lag



Fast Response  
0.3ms



LowBlue Mode



Circular Polarization  
Technology



Flicker-free



HDMI  
HIGH DEFINITION MULTIMEDIA INTERFACE



Low Blue Light  
(Hardware  
Solution)  
www.tuv.com  
ID: 0217010406

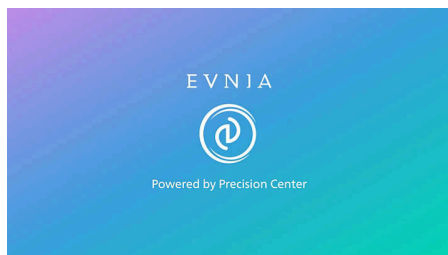
## Fast IPS Gaming monitor

Quad HD gaming monitor

27M2N5501UK/75

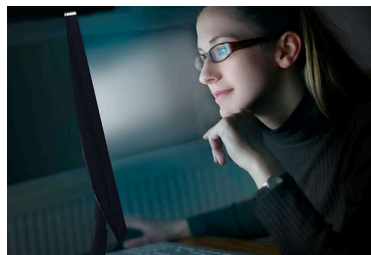
# Highlights

### Evnia Precision Center



Evnia Precision Center is an easy-to-use software designed to optimize and personalize your Evnia monitor. Whether you're a casual or competitive gamer, it offers a wide range of customization options to match your unique gaming style. With intuitive controls and seamless navigation, Evnia Precision Center gives you full control, providing everything you need to elevate your gaming to the next level—right at your fingertips.

### SoftBlue Technology



SoftBlue LED technology, combined with the monitor's low blue light panel, is an effective solution to reducing the adverse health effects caused by high exposure to blue light. In this monitor's panel, the ratio of light is reduced by nearly 50 percent while the SoftBlue LED technology works simultaneously by reducing harmful blue light rays emitted from the screen.

### 320Hz fast refresh



Experience the ultimate edge in intense, competitive gaming with the Philips Evnia monitor. Designed for gamers who demand ultra-smooth, lag-free visuals, this monitor delivers a 320Hz refresh rate—way faster than standard displays. Say goodbye to frustrating frame drops that make enemies jump unpredictably on the screen. With this high-performance display, you'll see every critical movement in ultra-smooth motion, giving you the precision and clarity to stay ahead of the competition and take your shot with confidence.



# Fast IPS Gaming monitor

Quad HD gaming monitor

27M2N5501UK/75

## Specifications

### Picture/Display

**Panel Size:** 27 inch / 68.5 cm  
**Aspect ratio:** 16:9  
**LCD panel type:** Fast IPS  
**Backlight type:** W-LED system  
**Pixel pitch:** 0.2331 x 0.2331 mm  
**Brightness:** 350 (HDR Off)nit; 450 (HDR On) nit, 500 (HDR peak) nit  
**Brightness uniformity:** 93-105%  
**Display colors:** 1.07B (8bits+FRC) (8bits @QHD 320Hz; 10bits @QHD 260Hz)  
**Color gamut (typical):** Adobe RGB:93.8%, DCI-P3:94%,sRGB: 129%,NTSC 106%\*  
**Contrast ratio (typical):** 1000:1  
**SmartContrast:** Mega Infinity DCR  
**Response time (typical):** 1 ms (Gray to Gray)\*  
**Viewing angle:** 178° (H) / 178° (V), @ C/R > 10  
**Picture enhancement:** SmartImage game  
**Maximum resolution:** 2560x1440 @320 Hz (DP/HDMI)  
**Effective viewing area:** 597.736(H) x 335.664(V) mm  
**Scanning Frequency:** 30-480KHz(H)/ 48-320Hz(V)  
**sRGB**  
**Delta E:** <2 (sRGB)  
**Flicker-free**  
**Pixel Density:** 109 PPI  
**LowBlue Mode**  
**Display Screen Coating:** Anti-Glare, 3H, Haze 25%  
**Low Input Lag**  
**EasyRead**  
**Adaptive sync**  
**HDR:** DisplayHDR 400 certified  
**Smart Sniper**  
**Shadow Boost**  
**Smart MBR:** 0.3ms\*  
**Smart MBR Sync**  
**Stark Shadow Boost**  
**Smart Crosshair**  
**SoftBlue technology**

### Connectivity

**Signal Input:** HDMI 2.1 x 2, DisplayPort 1.4 x 1  
**Sync Input:** Separate Sync  
**Audio (In/Out):** Headphone out  
**HDCP:** HDCP 1.4 (HDMI / DP), HDCP 2.3 (HDMI / DP)

### Convenience

**Plug & Play Compatibility:** DDC/CI, Mac OS, sRGB, Windows 11 / 10  
**User convenience:** Power On/Off, Menu/OK, Input/Up, Game Settings/Down, SmartImage game/Back  
**OSD Languages:** Brazil Portuguese, Czech, Dutch, English, Finnish, French, German, Greek, Hungarian, Italian, Japanese, Korean, Polish, Portuguese, Russian, Spanish, Simplified Chinese, Swedish, Turkish, Traditional Chinese, Ukrainian  
**Other convenience:** Kensington lock, VESA mount (100x100mm), LowBlue Mode  
**Control software:** Evnia Precision Center  
**MultiView**

### Stand

**Height adjustment:** 130 mm  
**Pivot:** -/+ 90 degree  
**Swivel:** -/+ 30 degree  
**Tilt:** -5/20 degree

### Power

**Power supply:** Internal, 100-240VAC, 50/60Hz  
**Off mode:** 0.3 W (typ.)  
**On mode:** 27.32 W (typ.)  
**Standby mode:** 0.5 W (typ.)  
**Power LED indicator:** Operation - White, Standby mode- White (blinking)

### Dimensions

**Packaging in mm (WxHxD):** 730 x 455 x 139 mm  
**Product without stand (mm):** 614 x 368 x 60 mm  
**Product with stand(max height):** 614 x 519 x 261 mm

### Weight

**Product with packaging (kg):** 8.20 kg  
**Product with stand (kg):** 5.47 kg  
**Product without stand (kg):** 4.05 kg

### Operating conditions

**Altitude:** Operation: +12,000ft (3,658m), Non-operation: +40,000ft (12,192m)  
**Temperature range (operation):** 0°C to 40 °C  
**MTBF:** 50,000 (Excluded backlight) hour(s)  
**Relative humidity:** 20%-80 %  
**Temperature range (storage):** -20°C to 60 °C

### Sustainability

**Environmental and energy:** RoHS  
**Recyclable packaging material:** 100 %  
**Post consumer recycled plastics:** 85%\*

### Compliance and standards

**Regulatory Approvals:** CB, CE Mark, MEPS, CEL, CCC, CECP, UKCA, EMF, FCC, ICES-003

### Cabinet

**Color:** White  
**Finish:** Texture

### Design

Designed in Amsterdam, NL



\* "IPS" word mark / trademark and related patents on technologies belong to their respective owners.  
\* For best output performance, please always ensure that your graphic card is capable of achieving the maximum resolution and refresh rate of this Philips display.  
\* Response time value equal to SmartResponse  
\* Smart MBR is to adjust brightness for blur reduction, so cannot adjust brightness while Smart MBR is turned on. To reduce motion blur, LED backlight will strobe synchronously with screen refresh, which may cause noticeable brightness change.  
\* Smart MBR is gaming-optimized mode. Turn on Smart MBR may cause noticeable screen flickering. It is recommended to turn off when you are not using the gaming function  
\* Adobe RGB and DCI-P3 Coverage based on CIE1976, sRGB Area based on CIE1931, NTSC Area based on CIE1976.  
\* This monitor strives for sustainability: the stand's feet and headphone holder are made with 35% recycled plastic and monitor's chassis is made up of 85% post-consumer recycled plastic.  
\* The monitor may look different from feature images.  
\* The products and accessories listed on this leaflet may differ by country and region.