

# PHILIPS



Quad HD gaming  
monitor

Fast IPS Gaming monitor

Evnia 2000

27" (68.5cm)

2560 x 1440 (Quad HD)



27M2N2500NF

## Broaden your gaming horizon

This 27-inch Fast IPS monitor brings sharp visuals to gaming. With its 144Hz refresh rate and 0.5ms Smart MBR, you can expect clear visuals and a high-quality all-around gaming experience.

### Features designed for gamers needs

- Evnia Precision Center: Maximize Your Gaming Experience
- ShadowBoost: for bringing dark scenes to life.
- Less eye fatigue with Flicker-free technology
- SmartImage game mode optimized for gamers
- Smart Crosshair: for better aim and more fun

### Built for fast action

- 144Hz refresh rates for ultra-smooth, brilliant images
- 0.5 ms ultra-fast speed for crisp image and smooth gameplay
- Certified NVIDIA® G-SYNC® compatible for smooth fast gaming
- Low input lag reduces time delay between devices to monitor

### Immersive visuals

- High Dynamic Range (HDR) for more lifelike colorful visuals
- SmartContrast for rich black details
- Crystalclear images with Quad HD 2560 x 1440 pixels

# Fast IPS Gaming monitor

Quad HD gaming monitor

27M2N2500NF/75

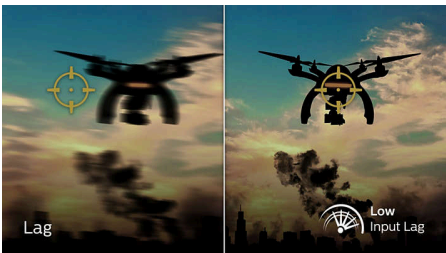
## Highlights

### 144Hz Gaming



You play intense, competitive gaming. You demand display with lag free, ultra-smooth images. This Philips display redraws the screen image up-to 144 times per second, effectively 2.4x faster than a standard display. A lower frame rate can make enemies appear to jump from spot to spot on the screen, making them difficult targets to hit. With 144Hz frame rate, you get those critical missing images on the screen which shows enemy movement in ultra-smooth motion so you can easily target them. With ultra-low input lag and no screen tearing, this Philips display is your perfect gaming partner

### Low input lag



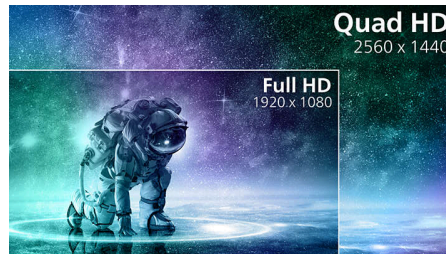
Input lag is the amount of time that elapses between performing an action with connected devices and seeing the result on screen. Low input lag reduces the time delay between entering a command from your devices to monitor, greatly improve on playing twitch-sensitive video games, particularly important to whom plays fast-paced, competitive games.

### 0.5 ms Smart MBR fast response



Philips Evnia with 0.5 ms Smart MBR effectively eliminates smearing and motion blur, delivers sharper and precise visuals to enhance gaming experience. Fast-moving action and dramatic transitions will be rendered smoothly. Best choice for playing thrilling and twitch-sensitive games.

### Crystalclear images



These Philips screens deliver Crystalclear, Quad HD 2560x1440 or 2560x1080 pixel images. Utilizing high performance panels with high density pixel count, enabled by high bandwidth sources, these new displays will make your images and graphics come alive. Whether you are demanding professional requiring extremely detailed information for CAD-CAM solutions, using 3D graphic applications or a financial wizard working on huge spreadsheets, Philips displays will give you Crystalclear images.

### SmartContrast



SmartContrast is a Philips technology that analyzes the contents you are displaying, automatically adjusting colors and controlling

backlight intensity to dynamically enhance contrast for the best digital images and videos or when playing games where dark hues are displayed. When Economy mode is selected, contrast is adjusted and backlighting fine-tuned for just-right display of everyday office applications and lower power consumption.

### High Dynamic Range (HDR)



High Dynamic Range delivers a dramatically different visual experience. With astonishing brightness, incomparable contrast and captivating color, images come to life with much greater brightness while also featuring much deeper, more nuanced darks. It renders a fuller palette of rich new colors never before seen on display, giving you a visual experience that engages your senses and inspires emotions.

### Flicker-free technology



Due to the way brightness is controlled on LED-backlit screens, some users experience flicker on their screen which causes eye fatigue. Philips Flicker-free Technology applies a new solution to regulate brightness and reduce flicker for more comfortable viewing.



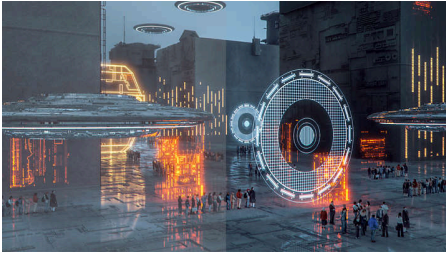
## Fast IPS Gaming monitor

Quad HD gaming monitor

27M2N2500NF/75

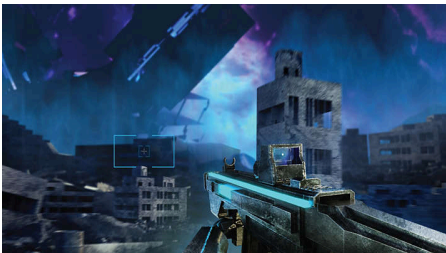
# Highlights

### SmartImage Game mode



The new Philips gaming display has quick access OSD fine tuned for gamers, offering you multiple options. "FPS" mode (First person shooting) improves dark themes in games, allowing you to see hidden objects in dark areas. "Racing" mode adapts display with fastest response time, high color, along with image adjustments. "RTS" mode (Real time strategy) has a special SmartFrame mode which enables highlighting of specific area and allows for size and image adjustments. Gamer 1 and Gamer 2 enable you to save personal customized settings based on different games, ensuring best performance.

### Smart Crosshair



Color of Crosshair is set by default. When Smart Crosshair is on, the color will change as complementary color to the background color. Smart Crosshair enhances the accuracy of aiming so you can spot the enemies more easily.

### ShadowBoost



This feature enhances dark scenes in a linear fashion. The ShadowBoost feature has three selectable levels that enhance overall brightness and ultimately provide beautiful picture quality with high contrast.

### Evnia Precision Center



Evnia Precision Center is an easy-to-use software designed to optimize and personalize your Evnia monitor. Whether you're a casual or competitive gamer, it offers a wide range of customization options to match your unique gaming style. With intuitive controls and seamless navigation, Evnia Precision Center gives you full control, providing everything you need to elevate your gaming to the next level—right at your fingertips.

### NVIDIA® G-SYNC® compatible



When playing intense games with high refresh rates, screen tearing may appear without optimal graphics synchronization. This Philips display is certified as NVIDIA® G-SYNC® compatible, reducing screen tearing and syncing your monitor's refresh rate with your graphic card's output for a smoother gaming experience. Scenes appear instantly, objects look sharper, and gameplay is smooth, giving you a stunning visual experience and a serious competitive edge.



LowBlue Mode



# Fast IPS Gaming monitor

Quad HD gaming monitor

27M2N2500NF/75

## Specifications

### Picture/Display

**Panel Size:** 27"/68.5cm  
**Aspect ratio:** 16:9  
**LCD panel type:** Fast IPS  
**Backlight type:** W-LED system  
**Pixel pitch:** 0.2331 (H) x 0.2331 (V)mm  
**Brightness:** 300 cd/m<sup>2</sup>  
**Display colors:** 16.7 M  
**Color gamut (typical):** Adobe RGB: 87.68% ,DCI-P3: 92.05%, sRGB: 113.37 %, NTSC :103.36%.\*  
**Contrast ratio (typical):** 1500:1  
**SmartContrast:** Mega Infinity DCR  
**Response time (typical):** 4 ms (Gray to Gray)\*  
**Viewing angle:** 178° (H) / 178° (V), @ C/R > 10  
**Picture enhancement:** SmartImage game  
**Maximum resolution:** 2560x1440 @ 144Hz (HDMI/DP)  
**Effective viewing area:** 597.736(H)x335.664(V)mm  
**Scanning Frequency:** 30 - 230 kHz (H) / 48 - 144 Hz (V)  
**sRGB**  
**Delta E:** Delta <2 (sRGB)  
**Flicker-free**  
**Pixel Density:** 109 PPI  
**LowBlue Mode**  
**Display Screen Coating:** Anti-Glare, 3H, Haze 25%  
**Low Input Lag:** Yes\*  
**EasyRead**  
**Adaptive sync**  
**G-SYNC**  
**HDR:** HDR 10 supported  
**Smart Crosshair**  
**Smart MBR:** 0.5 ms\*  
**Smart MBR Sync**  
**Shadow Boost**  
**SoftBlue technology**

### Connectivity

**Signal Input:** HDMI 2.0 x 1, DisplayPort 1.4 x 1  
**Audio (In/Out):** Headphone out  
**HDCP:** HDCP 1.4 (HDMI / DP), HDCP 2.2 (HDMI / DP)

### Convenience

**Plug & Play Compatibility:** DDC/CI, Mac OS X, sRGB, Windows 11 / 10  
**User convenience:** Power On/Off, Menu/OK, Input/Up, Game Settings/Down, SmartImage game/Back

**OSD Languages:** Brazil Portuguese, Czech, Dutch, English, Finnish, French, German, Greek, Hungarian, Italian, Japanese, Korean, Polish, Portuguese, Russian, Spanish, Simplified Chinese, Swedish, Turkish, Traditional Chinese, Ukrainian  
**Other convenience:** Kensington lock, VESA mount (100x100mm)  
**Control software:** Evnia Precision Center

### Stand

**Tilt:** -5/20 degree

### Power

**Power supply:** External, 100-240VAC, 50-60Hz  
**Off mode:** 0.3 W (typ.)  
**On mode:** 19.0 W (typ.)  
**Standby mode:** 0.5 W (typ.)  
**Power LED indicator:** Operation - White, Standby mode- White (blinking)

### Dimensions

**Packaging in mm (WxHxD):** 780 x 455 x 139 mm  
**Product without stand (mm):** 616 x 362 x 59 mm  
**Product with stand(max height):** 616 x 468 x 207 mm

### Weight

**Product with packaging (kg):** 6.19 kg  
**Product with stand (kg):** 3.42 kg  
**Product without stand (kg):** 3.04 kg

### Operating conditions

**Altitude:** Operation: +12,000ft (3,658m), Non-operation: +40,000ft (12,192m)  
**Temperature range (operation):** 0°C to 40 °C  
**MTBF:** 50,000 (Excluded backlight) hour(s)  
**Relative humidity:** 20%-80 %  
**Temperature range (storage):** -20°C to 60 °C

### Sustainability

**Environmental and energy:** RoHS  
**Recyclable packaging material:** 100 %  
**Specific Substances:** Mercury free, PVC / BFR free housing  
**Post consumer recycled plastics:** 85%\*

### Compliance and standards

**Regulatory Approvals:** CB, CE Mark, MEPS, PSB, CEL, CCC, CECP, BSMI, UKCA, EMF, FCC, ICES-003

### Cabinet

**Color:** Charcoal  
**Finish:** Textured



\* For best output performance, please always ensure that your graphic card is capable of achieving the maximum resolution and refresh rate of this Philips display.  
\* Response time value equal to SmartResponse  
\* Smart MBR is to adjust brightness for blur reduction, so cannot adjust brightness while Smart MBR is turned on. To reduce motion blur, LED backlight will strobe synchronously with screen refresh, which may cause noticeable brightness change.  
\* Smart MBR is gaming-optimized mode. Turn on Smart MBR may cause noticeable screen flickering. It is recommended to turn off when you are not using the gaming function.  
\* Adobe RGB and DCI-P3 Coverage based on CIE1976, sRGB Area based on CIE1931, NTSC Area based on CIE1976.  
\* Please note that the low input lag feature is permanently enabled and cannot be switched off.  
\* NVIDIA® G-SYNC® support interface: DisplayPort.  
\* Make sure to update NVIDIA® G-SYNC® driver to the latest version, see more information on NVIDIA website: <https://www.nvidia.com/>  
\* Make sure your graphic card supports NVIDIA® G-SYNC®.  
\* This monitor strives for sustainability: the monitor's chassis is made up of 85% post-consumer recycled plastic.  
\* The monitor may look different from feature images.  
\* The products and accessories listed on this leaflet may differ by country and region.