

PHILIPS

EVNIA



QD OLED gaming
monitor

QHD Gaming monitor

Evnia 6000

26.5" (67.3cm)

2560 x 1440 (Quad HD)



27M2N6500L

Your gaming experience to the utmost

This monitor is built for gaming at high speeds. Its 240Hz refresh rates and QD OLED panel make it a combination of incredible speed and premium picture quality.

Features designed for gamers needs

- Stark ShadowBoost: for enhancing visibility in dark scenes
- Protects and cools QD-OLED displays to reduce burn-in
- Smart Sniper: Improved control when you zoom in on targets
- Evnia Precision Center: Maximize Your Gaming Experience
- VESA Certified ClearMR: for accurate blur testing
- SmartImage game mode optimized for gamers
- Smart Crosshair: for better aim and more fun

Built for fast action

- AMD FreeSync™ Premium; tear free, stutter free, fluid gaming
- Ultra-fast 240 Hz refresh rate for virtually lag-free gaming
- Certified NVIDIA® G-SYNC® compatible for smooth fast gaming

Immersive visuals

- QD OLED for superior colors and vibrant visuals
- High Dynamic Range (HDR) for more lifelike colorful visuals

QHD Gaming monitor

QD OLED gaming monitor

27M2N6500L/69

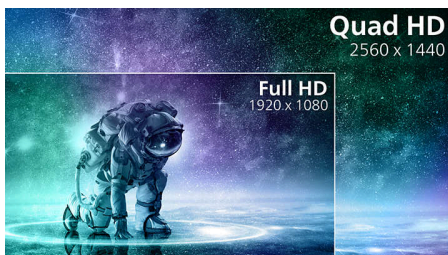
Highlights

Ultra-fast 240 Hz refresh rate



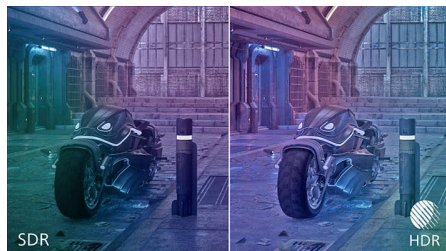
While playing the most intense engaging action-oriented games, ultra-fast 240 Hz refresh rate enhances an ultra-smooth, lag-free gaming experience. This Philips display redraws the screen image up-to 240 times per second, effectively faster than a standard display. Especially for fast-paced games like FPS and racing games, 240 Hz gives a superior motion and clarity visuals. With Philips 240 Hz display, action sequences in gameplay look judder-free and ghost-free. You will experience deeper immersion and feeling alive in game.

Crystalclear images



These Philips screens deliver Crystalclear, Quad HD 2560x1440 or 2560x1080 pixel images. Utilizing high performance panels with high density pixel count, enabled by high bandwidth sources, these new displays will make your images and graphics come alive. Whether you are demanding professional requiring extremely detailed information for CAD-CAM solutions, using 3D graphic applications or a financial wizard working on huge spreadsheets, Philips displays will give you Crystalclear images.

High Dynamic Range (HDR)



High Dynamic Range delivers a dramatically different visual experience. With astonishing brightness, incomparable contrast and captivating color, images come to life with much greater brightness while also featuring much deeper, more nuanced darks. It renders a fuller palette of rich new colors never before seen on display, giving you a visual experience that engages your senses and inspires emotions.

True 10-bit color depth



With this Philips true 10-bit color display, you can see color critical professional work of exceptional color accuracy and meeting professional standards. Compared with conventional 8-bit color display, this Philips monitor produces a more natural transition between hues for smoother gradients.

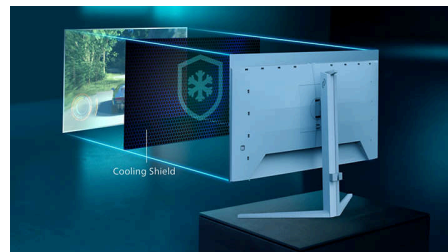
QD OLED technology



QD-OLED represents a hybrid approach that marries the OLED panels and quantum dot technology. By combining what's best of both,

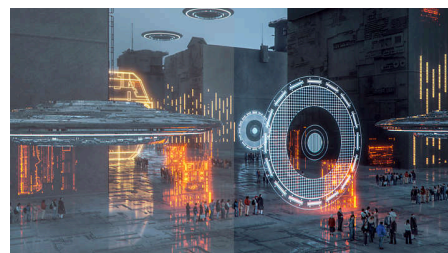
QD-OLED guarantees high contrast, deep blacks, and unlimited viewing angles, with the higher peak brightness and more vibrant colors.

Cooling shield



Burn-in is a real concern for users of QD-OLED screens. To increase the lifespan of your display, this monitor has an integrated graphene shield which keeps your display cool. The graphene evenly disperses heat generated by the blue-light emitted from your screen and cools more effectively than graphite. For gamers, this means you can play at the brightness level you prefer with a reduced risk for burn-in, and a display which stays pixel-perfect for longer.

SmartImage Game mode



The new Philips gaming display has quick access OSD fine tuned for gamers, offering you multiple options. "FPS" mode (First person shooting) improves dark themes in games, allowing you to see hidden objects in dark areas. "Racing" mode adapts display with fastest response time, high color, along with image adjustments. "RTS" mode (Real time strategy) has a special SmartFrame mode which enables highlighting of specific area and allows for size and image adjustments. Gamer 1 and Gamer 2 enable you to save personal customized settings based on different games, ensuring best performance.



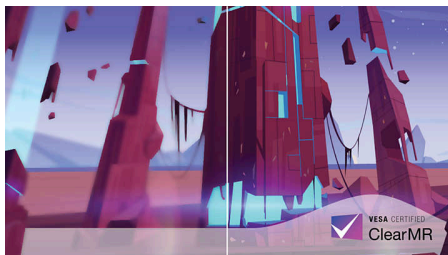
QHD Gaming monitor

QD OLED gaming monitor

27M2N6500L/69

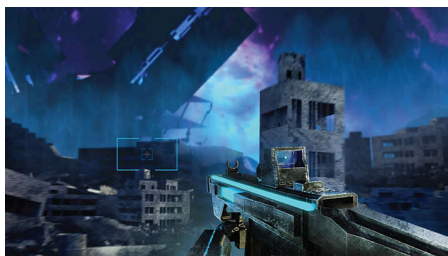
Highlights

VESA ClearMR 13000



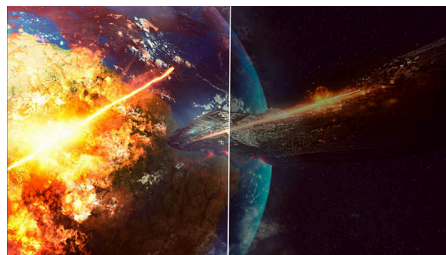
Previously, methods to test blur on screen were measured through MRPT. VESA Certified ClearMR acts as an alternative to MRPT and is designed to reflect the true nature of blur through digital high-speed camera testing. For monitors that are sent in and certified through VESA Certified ClearMR, you can rest assured that you will have an accurate assessment of the monitor's blur quality. Each certification is defined through a CMR range; with this monitor being ClearMR 13000 classified, it has one of the highest classifications of image quality, meaning less overall blur.

Smart Crosshair



Color of Crosshair is set by default. When Smart Crosshair is on, the color will change as complementary color to the background color. Smart Crosshair enhances the accuracy of aiming so you can spot the enemies more easily.

Stark ShadowBoost



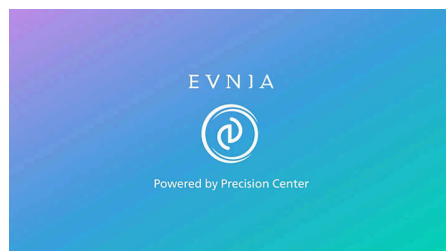
This feature enhances dark scenes without overexposing lightened areas. The Stark Shadowboost feature has three selectable levels that offer texturized images with better color saturation with higher contrast so you can see better in both light and dark environments. In addition, this feature helps you fine-tune your sight so that enemies get exposed more quickly when gaming.

Smart Sniper



Smart Sniper gives you better control over your scope for precise aiming. It overlays an additional window at either the top or center of your screen, and enables you to select a zoom level up to 2.0x your normal magnification.

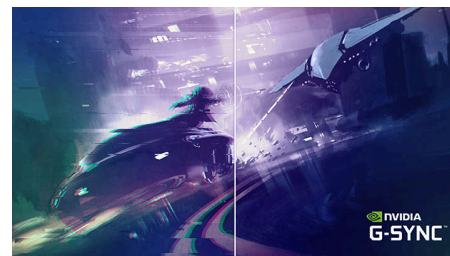
Evnia Precision Center



Evnia Precision Center is an easy-to-use software designed to optimize and personalize your Evnia monitor. Whether you're a casual or competitive

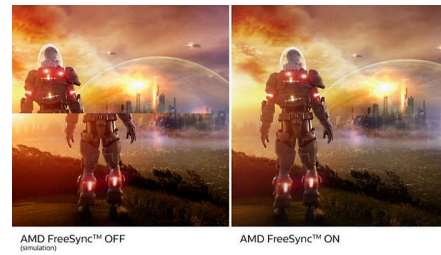
gamer, it offers a wide range of customization options to match your unique gaming style. With intuitive controls and seamless navigation, Evnia Precision Center gives you full control, providing everything you need to elevate your gaming to the next level—right at your fingertips.

NVIDIA® G-SYNC® compatible



When playing intense games with high refresh rates, screen tearing may appear without optimal graphics synchronization. This Philips display is certified as NVIDIA® G-SYNC® compatible, reducing screen tearing and syncing your monitor's refresh rate with your graphic card's output for a smoother gaming experience. Scenes appear instantly, objects look sharper, and gameplay is smooth, giving you a stunning visual experience and a serious competitive edge.

AMD FreeSync™ Premium



Gaming shouldn't be a choice between choppy gameplay or broken frames. AMD FreeSync™ Premium equips serious gamers with a fluid, tear-free gameplay experience at peak performance. There are no compromises, game confidently with a high refresh rate, low framerate compensation, and low latency.

Specifications

Picture/Display

Panel Size: 26.5"/67.3cm
Aspect ratio: 16:9
Monitor Panel Type: QD OLED
Pixel pitch: 0.2292 x 0.2292 mm
Brightness: SDR: 200 (APL 100%)nit, HDR: 400 (APL 10%) nit
Display colors: 1.07B (10bits)
Color gamut (typical): Adobe RGB 98%; DCI-P3:99%, sRGB: 147.5%, NTSC 120%*
Contrast ratio (typical): 1.5M:1
SmartContrast: Mega Infinity DCR
Response time (typical): 0.03ms (Gray to Gray)*
Viewing angle: 178° (H) / 178° (V), @ C/R > 10000
Picture enhancement: SmartImage game
Maximum resolution: 2560x1440 @ 240 Hz (DP); 2560x1440 @ 144Hz (HDMI) *
Effective viewing area: 590.42(H) x 333.72(V) mm
Scanning Frequency: HDMI: 30k-230kHz(H)/ 48-144Hz(V) , DP: 30k-390kHz(H)/ 48-240Hz(V)
sRGB
Delta E: < 2 (sRGB)
Flicker-free
Pixel Density: 111 PPI
Display Screen Coating: Anti-reflection, 2H
Low Input Lag
AMD FreeSync™ technology
G-SYNC: Yes*
HDR: HDR 10
Pixel format: RGB Q-Stripe*
Smart Crosshair
Stark ShadowBoost
Clear MR Tier: 13000
Smart Sniper
Shadow Boost
SoftBlue technology: Yes*

Connectivity

Signal Input: HDMI 2.0 x 1, DisplayPort 1.4 x 1
Sync Input: Separate Sync
Audio (In/Out): Headphone out
HDCP: HDCP 1.4 (HDMI / DisplayPort), HDCP 2.3 (HDMI / DisplayPort)

Convenience

Plug & Play Compatibility: DDC/CI, Mac OS, sRGB, Windows 11 / 10
User convenience: Power On/Off, Menu/OK, Input/Up, Game Settings/Down, SmartImage game/Back

OSD Languages: Brazil Portuguese, Czech, Dutch, English, Finnish, French, German, Greek, Hungarian, Italian, Japanese, Korean, Polish, Portuguese, Russian, Spanish, Simplified Chinese, Swedish, Turkish, Traditional Chinese, Ukrainian
Other convenience: Kensington lock, VESA mount (100x100mm), LowBlue Mode
Control software: Evnia Precision Center
MultiView

Stand

Height adjustment: 130 mm
Pivot: +90 degree
Swivel: -/+ 30 degree
Tilt: -5/20 degree

Power

Power supply: Internal, 100-240VAC, 50-60Hz
Off mode: 0.3 W (typ.)
On mode: 77.52 W (typ.)
Standby mode: 0.5 W (typ.)
Power LED indicator: Operation - White, Standby mode- White (blinking)

Dimensions

Packaging in mm (WxHxD): 730 x 445 x 139 mm
Product without stand (mm): 609 x 355 x 61 mm
Product with stand(max height): 609 x 531 x 261 mm

Weight

Product with packaging (kg): 8.79 kg
Product with stand (kg): 5.88 kg
Product without stand (kg): 4.08 kg

Operating conditions

Altitude: Operation: +12,000ft (3,658m), Non-operation: +40,000ft (12,192m)
Temperature range (operation): 0°C to 40 °C
MTBF: 30,000 (Excluded backlight) hour(s)
Relative humidity: 20%-80 %
Temperature range (storage): -20°C to 60 °C

Sustainability

Environmental and energy: RoHS
Recyclable packaging material: 100 %
Post consumer recycled plastics: 85%*

Compliance and standards

Regulatory Approvals: CB, CE Mark, ETL, MEPS, PSB, CEL, CCC, CEC, BSMI, UKCA, EMF, FCC, CEC

Cabinet

Color: Dark Slate
Finish: Textured

- * For best output performance, please always ensure that your graphic card is capable of achieving the maximum resolution and refresh rate of this Philips display.
- * Low blue light compliance: The ratio of display emission light in the range from 415 - 455 nm to the display emission of 400 - 500 nm shall be less than 50%.
- * Adobe RGB and DCI-P3 Coverage based on CIE1976, sRGB Area based on CIE1931, NTSC Area based on CIE1976.
- * Response time value equal to SmartResponse. The measurement pattern is 1 horizontal line.
- * The max resolution of QHD 144Hz is supported by 8 bits
- * Active pixels: 2560(H) x 1440(V) Number of total pixels: 2576(H) x 1456(V); extra pixels on each side, space reserved for pixel orbiting.
- * NVIDIA® G-SYNC® support interface: DisplayPort
- * Make sure to update NVIDIA® G-SYNC® driver to the latest version, see more information on NVIDIA website: <https://www.nvidia.com/>
- * Make sure your graphic card supports NVIDIA® G-SYNC®
- * 2020 Advanced Micro Devices, Inc. All rights reserved. AMD, the AMD Arrow logo, AMD FreeSync™ and combinations thereof are trademarks of Advanced Micro Devices, Inc. Other product names used in this publication are for identification purposes only and may be trademarks of their respective companies.
- * This monitor strives for sustainability: the stand's feet and headphone holder are made with 35% recycled plastic and monitor's chassis is made up of 85% post-consumer recycled plastic.
- * The monitor may look different from feature images.
- * The products and accessories listed on this leaflet may differ by country and region.

