

# PHILIPS



IPL Hair removal  
device with SenseIQ

Lumea IPL 9900 Series

SmartSkin sensor

4 intelligent attachments: body,  
face, bikini, underarms

Exclusive AI-powered app  
features

Both cordless and corded use



BRP958/00

## Our smartest IPL with exclusive SkinAI features

Enjoy 18 months of visibly hair-free smooth skin\*

Discover our smartest IPL solution ever for long-lasting smooth skin. Our fastest cordless Lumea IPL device with SenseIQ Technology now comes with exclusive SkinAI features in the Lumea IPL app to analyse your skin and track your progress.

### Gentle and effective for long-lasting smooth skin

- Fast results with treatments only every 2 weeks
- For convenience with corded and cordless options
- Developed with dermatologists to be easy and effective

### Full solution for face and body

- Full solution for face and body with 4 smart attachments
- A smooth face is only two steps away with a Facial Hair Remover
- Suitable for most skin tones and hair colours

### Personalised IPL hair removal treatment

- Gentle and comfortable with SenseIQ
- Smart skin analysis with SkinAI

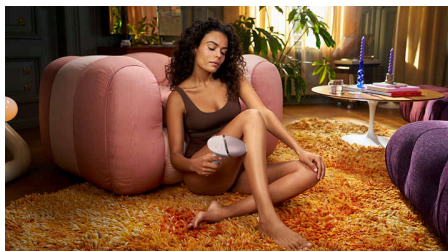
## Lumea IPL 9900 Series

IPL Hair removal device with SenseIQ

BRP958/00

# Highlights

### 2 x a month for fast results



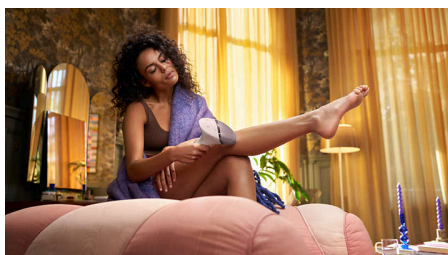
Get started with the initial phase of 4 treatments only every 2 weeks — that's half as many treatments as other brands. Then touch up monthly to maintain the results.

### SenseIQ technology



Lumea 9900 Series has five easily adjustable light settings. Our SmartSkin sensor reads your skin tone and helps you find the most comfortable setting. Intelligent attachments adapt treatment for each body area.

### For convenience with corded and cordless options



Philips Lumea is designed to be convenient and easy to use. Use the device corded for fast treatment on large body areas, like your legs, or go with the cordless battery mode to treat hard-to-reach body areas with precision.

### 4 smart attachments



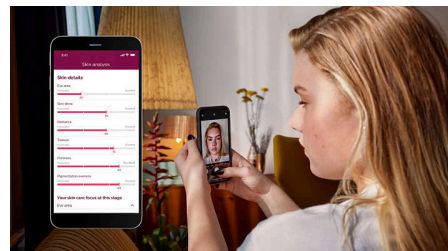
Specially designed attachments perfectly fit the curves of your body and trigger the most effective programs for each body area when they are connected. Face: Flat design and small window with UV filter. Body: Curved inwards with a large window. Bikini and Armpits: Curved outwards for hard-to-reach areas.

### Developed with dermatologists



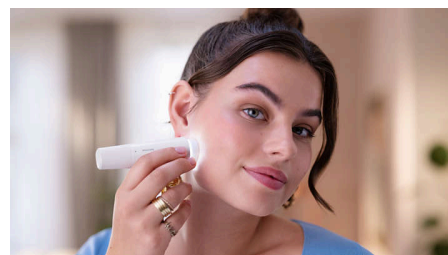
As a leader in health technology, Philips developed Lumea IPL in consultation with dermatologists, for easy and effective use in the safety of your home. Derived from technology used in professional salons, Lumea IPL offers gentle treatment, even on sensitive areas.

### Exclusive SkinAI features



Our free coaching app offers step-by-step guidance, now with exclusive SkinAI technology, to analyse your skin and track hair reduction.

### Includes Facial Hair Remover



Lumea IPL 9900 Series comes with the new Philips Facial Hair Remover. Now you can easily and safely remove peach fuzz right before you flash with Lumea.

### For most skin and hair types



IPL needs contrast between the pigment in the hair colour and the pigment in the skin tone, it therefore works on naturally dark blonde, brown and black hair and on skin tones from fair to dark brown (I-V).



## Lumea IPL 9900 Series

IPL Hair removal device with SenselQ

BRP958/00

# Specifications

### Technical specs. attachments

**Body treatment attachment:** Shape: Convex curved, Window size: 4.1 cm<sup>2</sup>, Tailored treatment for body: legs, arms and stomach

**Face treatment attachment:** Shape: Flat, Window size: 2 cm<sup>2</sup>, extra filter, Tailored treatment for face: upper lip, chin and jawline

**Bikini treatment attachment:** Shape: Concave curved, Window size: 3 cm<sup>2</sup>, Tailored treatment for sensitive bikini area

**Underarm treatment attachment:** Shape: Concave curved, Window size: 3 cm<sup>2</sup>, Tailored treatment for underarms

### Safety and adjustable settings

**Integrated UV filter:** Protects skin from UV light

**5 light energy settings:** Adjustable to your individual skin tone

**Integrated safety system:** Prevents unintentional flashing

**Skin Tone sensor:** Detects your skin tone

**SmartSkin sensor:** The right setting on demand

### Application mode

**Slide and Flash:** For quick application

**Stamp and Flash:** For treatment on small areas

**Corded/cordless use:** Both cordless and corded use

### Technical specifications

**Voltage:** 100–240 V

**Battery type:** Rechargeable battery

**High performance lamp:** Built to last, 250,000 flashes, equivalent to 20 years of lamp lifetime\*\*\*\*

### Service

**Warranty:** 2 year global warranty + 3 extra years of warranty upon product registration within 90 days

### Items included

**Instructions for use:** User manual

**Storage:** Luxury pouch

**Adapter:** 19.5 V / 4000 mA

### Application time

**Lower leg:** 8.5 min

**Underarms:** 2.5 min

**Bikini line:** 2 min

**Face areas:** 1.5 min



\* \* After 3 treatments. Median result 86% hair reduction on lower legs at 18 months. Individual results may vary. Based on a survey of 90 consumers.

\* \* When following the treatment schedule. Calculated for use on lower legs, bikini, armpits and face. The lamp lifetime does not extend the Philips 2-year worldwide guarantee