

PHILIPS



Refurbished IPL Hair
removal device

Lumea IPL 9000 Series

SmartSkin sensor

3 intelligent attachments: body,
face, precision

Lumea IPL App

Both cordless and corded use



BRI955/01R1

Cordless for ease, personalised treatment with SenseIQ

Enjoy 18 months of visibly hair-free smooth skin*

Enjoy hassle-free, personalised treatment with the cordless version of our fastest Lumea IPL device. SenseIQ technology with smart attachments and guidance in the Lumea IPL app to give you long-lasting smooth skin.

Gentle and effective for long-lasting smooth skin

- Fast results with treatments only every 2 weeks
- For convenience with corded and cordless options
- Developed with dermatologists to be easy and effective

Full solution for face and body

- Full solution for face and body with 3 smart attachments
- Suitable for most skin tones and hair colours

Refurbished Lumea IPL

- Same results, better for the environment

Personalised IPL hair removal treatment

- Gentle and comfortable with SenseIQ
- Optimise your routine with the Philips Lumea IPL app

Lumea IPL 9000 Series

Refurbished IPL Hair removal device

BRI955/01R1

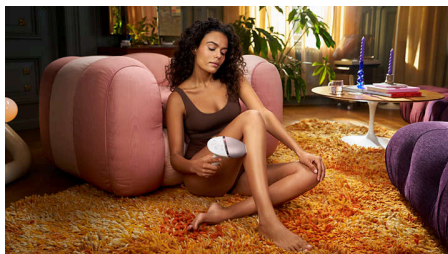
Highlights

Refurbished Lumea IPL



We love to reuse returned products and give them a second life, because the materials and parts we use to make them have the biggest CO2 impact. Choosing refurbished instead of brand new reduces the carbon footprint by 78%.***

2 x a month for fast results



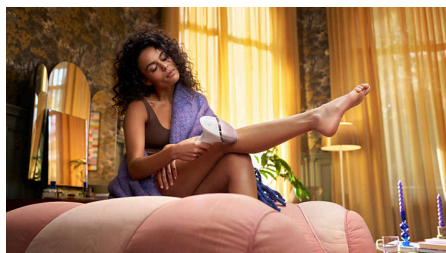
Get started with the initial phase of 4 treatments only every 2 weeks — that's half as many treatments as other brands. Then touch up monthly to maintain the results.

SenseIQ technology



Lumea 9000 Series has five easily adjustable light settings. Our SmartSkin sensor reads your skin tone and helps you find the most comfortable setting. Intelligent attachments adapt treatment for each body area.

For convenience with corded and cordless options



Philips Lumea is designed to be convenient and easy to use. Use the device corded for fast treatment on large body areas, like your legs, or go with the cordless battery mode to treat hard-to-reach body areas with precision.

3 smart attachments



Specially designed attachments perfectly fit the curves of your body and trigger the most effective programmes for each body area when they are connected. Face: Flat design and small window with UV filter. Body: Curved inward with a large window. Precision: Curved outward for hard-to-reach areas.

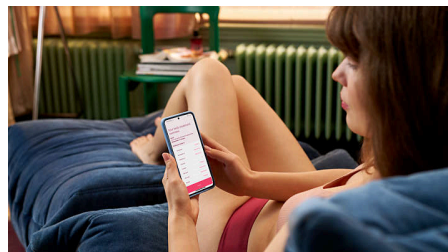
Developed with dermatologists



As a leader in health technology, Philips developed Lumea IPL in consultation with dermatologists, for easy and effective use in the

safety of your home. Derived from technology used in professional salons, Lumea IPL offers gentle treatment, even on sensitive areas.

Philips Lumea IPL app



Our free coaching app helps you plan and stick to your treatment schedule, then takes you through each session step by step. Downloaded by more than 2.1 million users.

For most skin and hair types



IPL needs contrast between the pigment in the hair colour and the pigment in the skin tone, it therefore works on naturally dark blonde, brown and black hair and on skin tones from fair to dark brown (I-V).

Lumea IPL 9000 Series

Refurbished IPL Hair removal device

BRI955/01R1

Specifications

Technical specs. attachments

Body treatment attachment: Shape: Convex curved, Window size: 4.1 cm², Tailored treatment for body: legs, arms and stomach

Face treatment attachment: Shape: Flat,

Window size: 2 cm², extra filter, Tailored treatment for face: upper lip, chin and jawline

Precision treatment attachment: Shape: Concave curved, Window size: 3 cm², Tailored treatment for bikini and underarm areas

Safety and adjustable settings

Integrated UV filter: Protects skin from UV light

5 light energy settings: Adjustable to your individual skin tone

Integrated safety system: Prevents unintentional

flashing

Skin Tone sensor: Detects your skin tone

SmartSkin sensor: The right setting on demand

Application mode

Slide and Flash: For quick application

Stamp and Flash: For treatment on small areas

Corded/cordless use: Both cordless and corded use

Technical specifications

Voltage: 100–240 V

Battery type: Rechargeable battery

High performance lamp: Built to last, 450,000 flashes, equivalent to 39 years of lamp lifetime**

Service

Warranty: 2 year global warranty + 3 extra years of warranty upon product registration within 90 days

Items included

Instructions for use: User manual

Storage: Luxury pouch

Adapter: 19.5 V / 4000 mA

Application time

Underarms: 2.5 min

Bikini line: 2 min

Face areas: 1.5 min

Lower legs: 8.5 min



* ** Median result: 86% hair reduction on lower legs, measured 18 months after the 3rd treatment. While Lumea is proven to deliver up to 12 months of hair reduction, testing has shown that it can effectively provide hair reduction for up to 18 months, starting after 3 treatments. Packaging may vary

* * When following the treatment schedule. Calculated for use on lower legs, bikini, armpits and face. The lamp lifetime does not extend the Philips 2-year worldwide guarantee

* * * In scope: product, packaging materials and Philips reverse logistics of Lumea S9000 returns. Out of scope: chemicals, energy needed for reprocessing, inbound part and material transport. Calculation based on ReCiPe2016 and ecoinvent3.6 database, assuming that all accessories, adapter and packaging need replacement.