

PHILIPS

EVNIA



DUAL MODE gaming monitor

Fast IPS Gaming monitor

Evnia 5000

27" (68.5 cm)

3840 x 2160 (4K UHD)

1920 x 1080 (Full HD)



27M2N5901A

Your gaming experience to the utmost

Unlock next-level gaming with this Evnia monitor's Dual Mode. Seamlessly switch between 3840 x 2160 @ 160Hz and 1920 x 1080 @ 320Hz with a simple toggle for unmatched versatility and performance.

Features designed for gamers needs

- Connect your notebook with one USB-C cable
- Stark ShadowBoost: for enhancing visibility in dark scenes
- AI-enhanced Ambiglow: for intensified entertainment
- Smart Sniper: Improved control when you zoom in on targets
- Evnia Precision Center: Maximize Your Gaming Experience
- Built-in stereo speakers for multimedia
- MultiView enables simultaneous dual connection and view
- Smart Crosshair: for better aim and more fun

Built for fast action

- Dual Mode: The flexibility to match your gameplay
- 320Hz refresh rates for silky-smooth and vivid ima
- 0.5 ms ultra-fast speed for crisp image and smooth gameplay

Immersive visuals

- UltraClear 4K UHD (3840x2160) resolution for precision

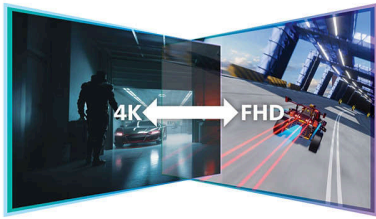
Fast IPS Gaming monitor

DUAL MODE gaming monitor

27M2N5901A/75

Highlights

Dual Mode



Experience the best of both worlds with Dual Mode. Seamlessly toggle between 3840 x 2160 @ 160Hz for stunning clarity and 1920 x 1080 @ 320Hz for ultra-smooth gameplay. Whether you crave breathtaking visuals or high-speed action, this monitor adapts to your needs in an instant.

USB-C connection



This Philips display features a USB type-C connector with power delivery. With intelligent and flexible power management, you can power charge your compatible device directly. Its slim, reversible USB-C allows for easy, one-cable connection. You can watch high resolution video and transfer data at a super-speed, while powering up and re-charging your compatible device at the same time.

320Hz fast refresh



Experience the ultimate edge in intense, competitive gaming with the Philips Evnia monitor. Designed for gamers who demand ultra-smooth, lag-free visuals, this monitor delivers a 320Hz refresh rate—way faster than standard displays. Say goodbye to frustrating frame drops that make enemies jump

unpredictably on the screen. With this high-performance display, you'll see every critical movement in ultra-smooth motion, giving you the precision and clarity to stay ahead of the competition and take your shot with confidence.

0.5 ms Smart MBR fast response



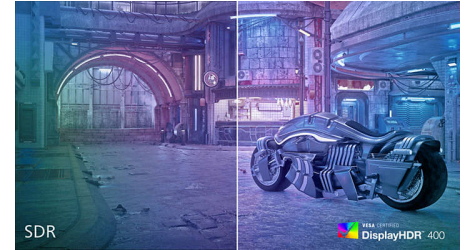
Philips Evnia with 0.5 ms Smart MBR effectively eliminates smearing and motion blur, delivers sharper and precise visuals to enhance gaming experience. Fast-moving action and dramatic transitions will be rendered smoothly. Best choice for playing thrilling and twitch-sensitive games.

UltraClear 4K UHD resolution



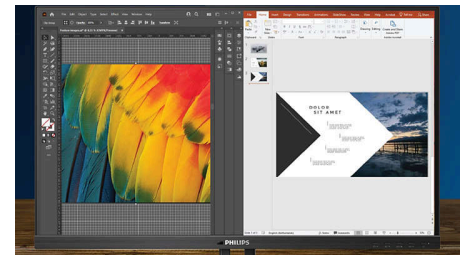
These Philips displays utilize high performance panels to deliver UltraClear, 4K UHD (3840 x 2160) resolution images. Whether you are demanding professional requiring extremely detailed images for CAD solutions, using 3D graphics applications or a financial wizard working on huge spreadsheets, Philips displays will make your images and graphics come alive.

DisplayHDR 400



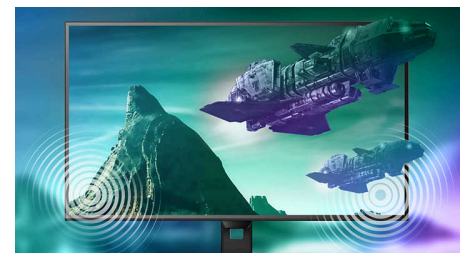
VESA-certified DisplayHDR 400 delivers a significant step-up from normal SDR displays. Unlike, other 'HDR compatible' screens, true DisplayHDR 400 produces astonishing brightness, contrast and colors. With global dimming and minimum 400 nits brightness, images come to life with notable highlights while featuring deeper, more nuanced blacks. It renders a fuller palette of rich new colors, delivering a visual experience that engages your senses.

MultiView technology



With the ultra-high resolution Philips MultiView display you can now experience a world of connectivity. MultiView enables active dual connect and view so that you can work with multiple devices like a PC and notebook simultaneously, for complex multi-tasking.

Built-in stereo speakers



A pair of high quality stereo speakers built into a display device. It can be visible front firing, or invisible down firing, top firing, rear firing, etc depending on model and design.



Fast IPS Gaming monitor

DUAL MODE gaming monitor

27M2N5901A/75

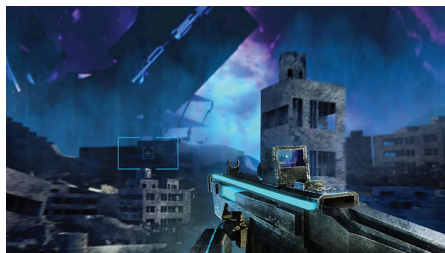
Highlights

AI-enhanced Ambiglow



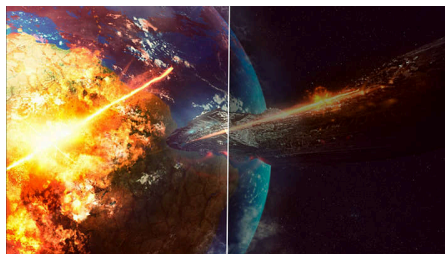
Our AI-enhanced processor analyzes the incoming image content and continuously adapts the color and brightness of the emitted light to match the image. This feature adds a new dimension to your viewing experience. The innovative Ambiglow uses its AI capabilities to create a truly immersive and customizable gaming experience. From filling your gaming room with color to feeling like you are part of the game, the AI-enhanced Ambiglow is made to make your gaming experience the best it's ever been by combining intelligence, color, and light.

Smart Crosshair



Color of Crosshair is set by default. When Smart Crosshair is on, the color will change as complementary color to the background color. Smart Crosshair enhances the accuracy of aiming so you can spot the enemies more easily.

Stark ShadowBoost



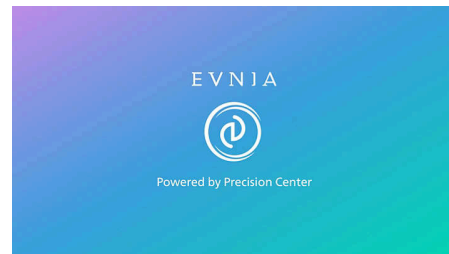
This feature enhances dark scenes without overexposing lightened areas. The Stark Shadowboost feature has three selectable levels that offer texturized images with better color saturation with higher contrast so you can see better in both light and dark environments. In addition, this feature helps you fine-tune your sight so that enemies get exposed more quickly when gaming.

Smart Sniper



Smart Sniper gives you better control over your scope for precise aiming. It overlays an additional window at either the top or center of your screen, and enables you to select a zoom level up to 2.0x your normal magnification.

Evnia Precision Center



Evnia Precision Center is an easy-to-use software designed to optimize and personalize your Evnia monitor. Whether you're a casual or competitive gamer, it offers a wide range of customization options to match your unique gaming style. With intuitive controls and seamless navigation, Evnia Precision Center gives you full control, providing everything you need to elevate your gaming to the next level—right at your fingertips.

Fast IPS Gaming monitor

DUAL MODE gaming monitor

27M2N5901A/75

Specifications

Picture/Display

Panel Size: 27 inch / 68.5 cm
Aspect ratio: 16:9
LCD panel type: Fast IPS
Backlight type: W-LED system
Pixel pitch: 0.1554 x 0.1554mm
Brightness: 350 (SDR) cd/m², 450 (HDR On) cd/m²
Brightness uniformity: 93-105%
Display colors: 1.07B (8bits+FRC), (8bits @UHD 160Hz/FHD 320Hz; 10bits @ UHD120Hz/FHD 240Hz)
Color gamut (typical): Adobe RGB 90%; DCI-P3:95%, sRGB: 130%, NTSC 110% *
Contrast ratio (typical): 1000:1
SmartContrast: Mega Infinity DCR
Response time (typical): 1 ms (Gray to Gray)*
Viewing angle: 178° (H) / 178° (V), @ C/R > 10
Picture enhancement: SmartImage game
Maximum resolution: 3840x2160 @ 160 Hz (HDMI/DP), 1920x1080@320Hz (HDMI/DP)
Effective viewing area: 596.763(H) x 335.664(V)mm
Scanning Frequency: UHD: 30 - 360 kHz (H) / 46 - 160 Hz (V); FHD: 30 - 360 kHz (H) / 48 - 3200 Hz (V)
sRGB
Delta E: <2 (sRGB)
Flicker-free
Pixel Density: 163 PPI
LowBlue Mode
Display Screen Coating: Anti-Glare, 3H, Haze 25%
Low Input Lag
EasyRead
HDR: DisplayHDR 400 certified
Smart Sniper
Shadow Boost
Smart MBR Sync
Stark Shadow Boost
Smart MBR: 0.5ms*
Smart Crosshair
SoftBlue technology

Connectivity

Signal Input: HDMI 2.1 x 2, DisplayPort 1.4 x 1, USB-C x1 (video, data and PD)
Sync Input: Separate Sync
Audio (In/Out): Headphone out

HDCP: HDCP 1.4 (HDMI / DP / USB-C), HDCP 2.2 (USB-C), HDCP 2.3 (HDMI / DP)
USB Hub: USB3.2, Gen1, 5G, upstream: USB-B x1, downstream: USB-A x2 (with x1 FC)

Power Delivery

Max power delivery: Up to 65W (5V/3A, 7V/3A, 9V/3A, 10V/3A, 12V/3A, 15V/3A, 20V/3.25A)
Version: USB PD version 3.0

Convenience

Built-in Speakers: 5Wx2
Plug & Play Compatibility: DDC/CI, Mac OS, sRGB, Windows 11 / 10
User convenience: Power On/Off, Menu/OK, Input/Up, Dual Resolution/Down, SmartImage game/Back
OSD Languages: Brazil Portuguese, Czech, Dutch, English, Finnish, French, German, Greek, Hungarian, Italian, Japanese, Korean, Polish, Portuguese, Russian, Spanish, Simplified Chinese, Swedish, Turkish, Traditional Chinese, Ukrainian
Other convenience: Kensington lock, VESA mount (100x100mm), LowBlue Mode
Control software: Evnia Precision Center
MultiView: 2x devices, PIP/PBP mode
KVM
Ambiglow: Ambiglow 3 sided

Stand

Height adjustment: 130 mm
Pivot: -/+ 90 degree
Swivel: -/+ 30 degree
Tilt: -5/20 degree

Power

Power supply: Internal, 100-240VAC, 50/60Hz
Off mode: 0.3 W (typ.)
On mode: 32.5 W (typ.)
Standby mode: 0.5 W (typ.)
Power LED indicator: Operation - White, Standby mode- White (blinking)

Dimensions

Packaging in mm (WxHxD): 840 x 478 x 188 mm
Product without stand (mm): 614 x 368 x 75 mm
Product with stand(max height): 614 x 526 x 262 mm

Weight

Product with packaging (kg): 10.04 kg
Product with stand (kg): 6.58 kg
Product without stand (kg): 5.17 kg

Operating conditions

Altitude: Operation: +12,000ft (3,658m), Non-operation: +40,000ft (12,192m)
Temperature range (operation): 0°C to 40 °C
MTBF: 50,000 (Excluded backlight) hour(s)
Relative humidity: 20%-80 %
Temperature range (storage): -20°C to 60 °C

Sustainability

Environmental and energy: RoHS
Recyclable packaging material: 100 %
Specific Substances: PVC / BFR free housing
Post consumer recycled plastics: 85%*

Compliance and standards

Regulatory Approvals: CB, CE Mark, TUV/ISO9241-307, TUV-BAUART, EAC, EAC ROHS, MEPS, UKCA, EMF, FCC, ICES-003

Cabinet

Color: White
Finish: Texture



* "IPS" word mark / trademark and related patents on technologies belong to their respective owners.
* For best output performance, please always ensure that your graphic card is capable of achieving the maximum resolution and refresh rate of this Philips display.
* Response time value equal to SmartResponse
* Smart MBR is to adjust brightness for blur reduction, so cannot adjust brightness while Smart MBR is turned on. To reduce motion blur, LED backlight will strobe synchronously with screen refresh, which may cause noticeable brightness change.
* Smart MBR is gaming-optimized mode. Turn on Smart MBR may cause noticeable screen flickering. It is recommended to turn off when you are not using the gaming function
* This monitor strives for sustainability: the stand's feet and headphone holder are made with 35% recycled plastic and monitor's chassis is made up of 85% post-consumer recycled plastic.
* Adobe RGB and DCI-P3 Coverage based on CIE1976, sRGB Area based on CIE1931, NTSC Area based on CIE1976.
* The monitor may look different from feature images.
* The products and accessories listed on this leaflet may differ by country and region.