

# PHILIPS

## LCD monitor

### Business Monitor

2000 series

24 (23.8" / 60.47 cm diag.)

1920 x 1080 (Full HD)

24B2N2100L



## Empower daily efficiency

This monitor delivers business efficiency. Not only is it equipped with essential features, but it also has ones that stand out like its 100hz refresh rate, SoftBlue, Flicker-Free, VESA mount, and more.

### **Designed for the way you work**

- SoftBlue Technology: for comfortable viewing
- Less eye fatigue with Flicker-free technology
- EasyRead mode for a paper-like reading experience
- Eyesafe certified blue light protection and color accuracy

### **Great performance**

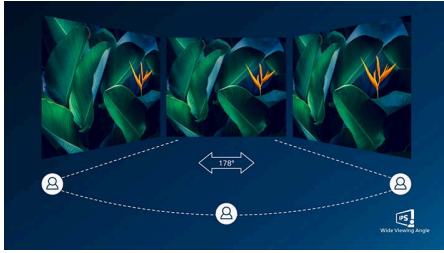
- IPS LED wide view technology for image and color accuracy
- SmartImage presets for easy optimized image settings
- 16:9 Full HD display for crisp detailed images
- 100Hz Fast Refresh: for ultra-smooth images

### **Easy to experience**

- Cable management reduces cable clutter for neat workspace
- VESA mount for convenience
- HDMI ensures universal digital connectivity

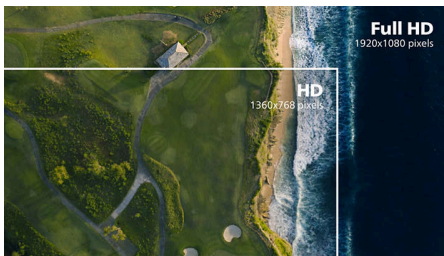
# Highlights

## IPS technology



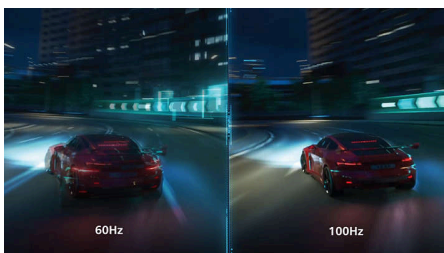
IPS displays use an advanced technology which gives you extra wide viewing angles of 178/178 degree, making it possible to view the display from almost any angle. Unlike standard TN panels, IPS displays gives you remarkably crisp images with vivid colors, making it ideal not only for Photos, movies and web browsing, but also for professional applications which demand color accuracy and consistent brightness at all times.

## 16:9 Full HD display



Picture quality matters. Regular displays deliver quality, but you expect more. This display features enhanced Full HD 1920 x 1080 resolution. With Full HD for crisp detail paired with high brightness, incredible contrast and realistic colors expect a true to life picture.

## 100Hz Fast refresh



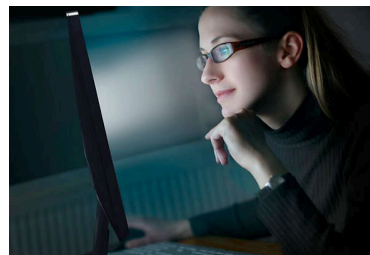
This Philips display refreshes the screen image up to 100 times per second which makes this monitor much faster than a standard display. It translates into super smooth actions on screen, guaranteeing the immediate visual benefits.

## SmartImage



SmartImage is an exclusive leading edge Philips technology that analyzes the content displayed on your screen and gives you optimized display performance. This user friendly interface allows you to select various modes like Office, Photo, Movie, Game, Economy etc., to fit the application in use. Based on the selection, SmartImage dynamically optimizes the contrast, color saturation and sharpness of images and videos for ultimate display performance. The Economy mode option offers you major power savings. All in real time with the press of a single button!

## SoftBlue Technology



SoftBlue LED technology, combined with the monitor's low blue light panel, is an effective solution to reducing the adverse health effects caused by high exposure to blue light. In this monitor's panel, the ratio of light is reduced by nearly 50% while the SoftBlue LED technology works simultaneously by reducing harmful blue light rays emitted from the screen. Not to mention, the SoftBlue LED technology is tested and certified by TUV Rheinland Eyesafe for its effectiveness in reducing blue light emissions.

## Flicker-free technology



Due to the way brightness is controlled on LED-backlit screens, some users experience flicker on their screen which causes eye fatigue. Philips Flicker-free Technology applies a new solution to regulate brightness and reduce flicker for more comfortable viewing.

## TUV Rheinland Eyesafe



Philips display meets TUV Rheinland Eyesafe® standard to truly protect you from the long exposure to blue light. The always-on blue light filter not only helps reduce digital eye strain, but also guarantees color integrity.

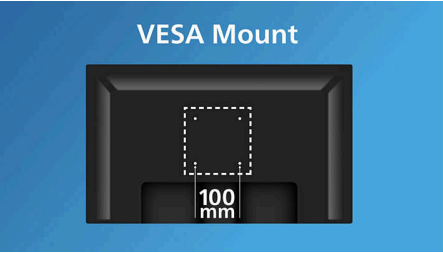
## HDMI Ready



An HDMI-ready device has all the required hardware to accept High-Definition Multimedia Interface (HDMI) input. A HDMI cable enables high-quality digital video and audio all transmitted over a single cable from a PC or any number of AV sources (including set-top boxes, DVD players, A/V receivers and video cameras).

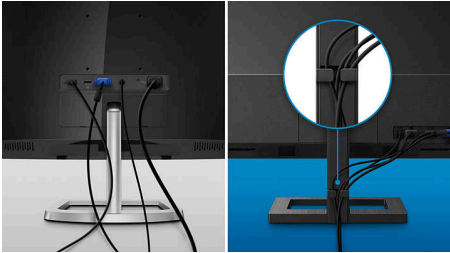
# Highlights

## VESA mount for convenience



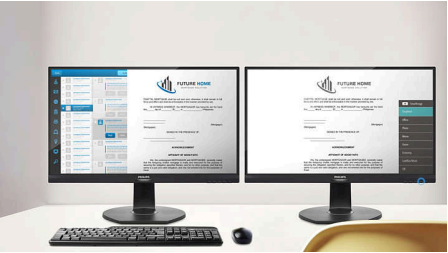
VESA mount for convenience

## Cable management



Cable management is an intimate design that maintains tidy workspace by organizing cables and wires required for the operation of a display device.

## EasyRead mode



EasyRead mode for a paper-like reading experience



# Specifications

## Picture/Display

**Panel Size:** 23.8 inch/ 60.47 cm

**Aspect ratio:** 16:9

**LCD panel type:** IPS

**Backlight type:** W-LED system

**Pixel pitch:** 0.2745(H)mm x 0.2745(V)mm

**Brightness:** 250 cd/m<sup>2</sup>

**Display colors:** 16.7 M (8 bit)

**Color gamut (typical):** NTSC 103%\*, sRGB 99%\*

**Contrast ratio (typical):** 1300:1

**SmartContrast:** 50,000,000:1

**Response time (typical):** 4 ms (Gray to Gray)\*

**Viewing angle:** 178° (H) / 178° (V), @ C/R > 10

**Picture enhancement:** SmartImage

**Maximum resolution:** VGA: 1920x1080@75Hz;

HDMI: 1920x1080@100Hz

**Effective viewing area:** 527.04(H)x296.46(V) mm

**Scanning Frequency:** HDMI: 30 - 115 kHz (H) / 48 - 100 Hz (V); VGA: 30 - 85 kHz (H) / 48 - 75 Hz (V)

sRGB

SoftBlue

Flicker-free

**Pixel Density:** 93 PPI

**Display Screen Coating:** Anti-Glare, 3H, Haze 25%

EasyRead

Adaptive sync

## Connectivity

**Signal Input:** HDMI 1.4 x 1, VGA x 1

**Sync Input:** Separate Sync, Sync on Green

**Audio (In/Out):** Audio out

**HDCP:** HDCP 1.4 (HDMI)

## Convenience

**Plug & Play Compatibility:** DDC/CI, Mac OS, sRGB, Windows 11 / 10

**User convenience:** SmartImage, Input, Brightness, Menu, Power On/Off

**OSD Languages:** Brazil Portuguese, Czech, Dutch, English, French, Finnish, German, Greek, Hungarian, Italian, Japanese, Korean, Portuguese, Polish, Russian, Simplified Chinese, Spanish, Swedish, Traditional Chinese, Turkish, Ukrainian

**Other convenience:** Kensington lock, VESA mount (100x100mm)

**Control software:** SmartControl

## Stand

**Tilt:** -5/25 degree

## Power

**ECO mode:** 8.33 W (typ.)

**Power supply:** Built-in, 100-240VAC, 50-60Hz

**Off mode:** 0.3 W

**On mode:** 12.72 W (typ.) (EnergyStar test method)

**Standby mode:** 0.3 W

**Power LED indicator:** Operation - White, Standby mode- White (blinking)

## Dimensions

**Packaging in mm (WxHxD):** 600 x 420 x 123 mm

**Product without stand (mm):** 550 x 332 x 48 mm

**Product with stand(max height):** 550 x 429 x 181 mm

## Weight

**Product with packaging (kg):** 4.76 kg

**Product with stand (kg):** 2.78 kg

**Product without stand (kg):** 2.51 kg

## Operating conditions

**Altitude:** Operation: +12,000ft (3,658m), Non-operation: +40,000ft (12,192m)

**Temperature range (operation):** 0°C to 40 °C

**Relative humidity:** 20%-80 %

**Temperature range (storage):** -20°C to 60 °C

**MTBF (demonstrated):** 70,000 hrs (excluded backlight)

## Sustainability

**Environmental and energy:** EnergyStar 8.0, EPEAT\*, RoHS

**Post consumer recycled plastic:** 85%

**Recyclable packaging material:** 100 %

**Specific Substances:** Mercury free, PVC / BFR free housing

## Compliance and standards

**Regulatory Approvals:** CB, CE Mark, EPA, CEL, CCC, CECP, UKCA, EMF, FCC, ICES-003, eyesafe® CERTIFIED 2.0, TÜV Rheinland Low Blue Light (Hardware Solution)

## Cabinet

**Finish:** Texture

**Foot:** Black

**Front bezel:** Black

**Rear cover:** Black

