

PHILIPS

LCD monitor

Business monitor

3000 series

31.5" (80 cm)

2560 x 1440 (Quad HD)

32B2N3500



Redefining workflow productivity

Speed through daily tasks in comfort with this monitor's SoftBlue technology, Quad HD resolution and 100 Hz refresh rate. Additionally, SmartErgoBase adds an ergonomic touch to the monitor's feature list.

Designed for the way you work

- SmartErgoBase enables user-friendly ergonomic adjustments
- Smart Link Sync: Matches primary display on second screen
- Eyesafe-certified blue light protection and colour accuracy
- Ultra Slim Bezel: for minimal edges and more screen
- Less eye fatigue with Flicker-Free technology
- SoftBlue Technology: for comfortable viewing

Easy to experience

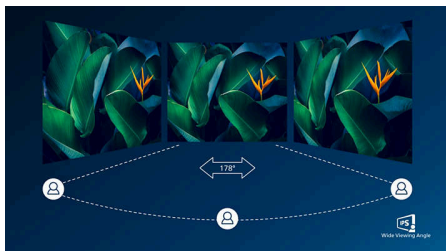
- VESA mount for convenience
- HDMI ensures universal digital connectivity

Superb Picture Quality

- 100 Hz refresh rates for ultra-smooth images
- IPS LED wide view technology for image and colour accuracy
- Crystal clear images with Quad HD 2560 x 1440 pixels
- 1.07 billion colours for smooth colour gradations and detail

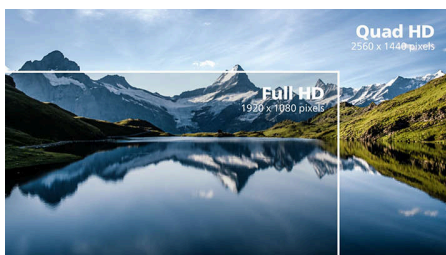
Highlights

IPS technology



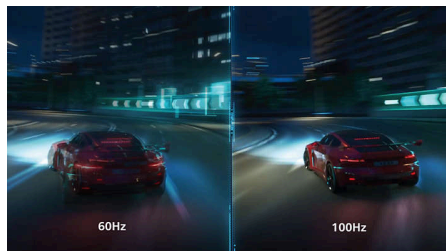
IPS displays use an advanced technology that gives you extra-wide viewing angles of 178/178 degrees, making it possible to view the display from almost any angle. Unlike standard TN panels, IPS displays give you remarkably crisp images with vivid colours, making them ideal not only for Photos, movies and web browsing, but also for professional applications that demand colour accuracy and consistent brightness at all times.

CrystalClear images



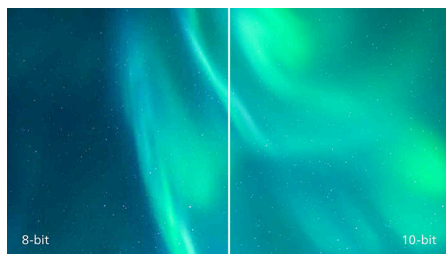
These Philips screens deliver CrystalClear, Quad HD 2560 x 1440 or 2560 x 1080 pixel images. Utilising high performance panels with a high-density pixel count enabled by high bandwidth sources, these new displays will make your images and graphics come alive. Whether you are a demanding professional requiring extremely detailed information for CAD-CAM solutions using 3D graphic applications, or a financial wizard working on huge spreadsheets, Philips displays will give you CrystalClear images.

100 Hz fast refresh



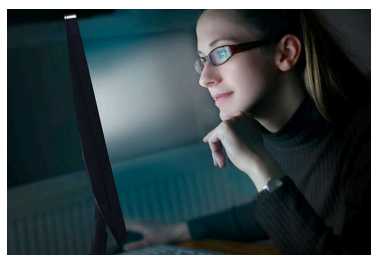
This Philips display refreshes the screen image up to 100 times per second which makes this monitor much faster than a standard display. With a 100 Hz frame rate, gamers are able to find those critical images on the screen that show enemy movement in an ultra-smooth motion so that they are easily targetable.

10-bit colours



The 10 bit display delivers rich colour depth with 1.07 billion colours and 12 bit internal processing for re-creating smooth, natural colours without gradations or colour banding.

SoftBlue Technology



SoftBlue LED technology, combined with the monitor's low blue light panel, is an effective solution for reducing the adverse health effects

caused by high exposure to blue light. In this monitor's panel, the ratio of light is reduced by nearly 50 percent, while the SoftBlue LED technology works simultaneously by reducing harmful blue light rays emitted from the screen. Furthermore, the SoftBlue LED technology is tested and certified by TUV Rheinland Eyesafe® for its effectiveness in reducing blue light emissions.

Flicker-Free technology



Due to the way brightness is controlled on LED-backlit screens, some users experience flicker on their screen which causes eye fatigue. Philips Flicker-Free technology applies a new solution to regulate brightness and reduce flicker for more comfortable viewing.

Smart Link Sync Second Screen Harmony



When connected as a secondary monitor in a daisy-chain setup with a Smart Link Sync enabled primary display, brightness and colour settings are automatically synchronised. There is no manual adjustments needed. Whether you're designing, presenting or multitasking, enjoy seamless visual consistency across screens. Choose from OSD Sync or Light Sync modes (Low, Mid or High) in the primary monitor to match your environment.



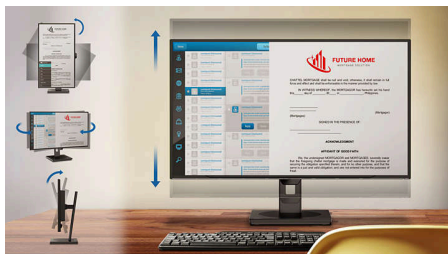
Highlights

TUV Rheinland Eyesafe - RPF® 40



Philips display meets the TUV Rheinland Eyesafe® standard to truly protect you from long exposure to blue light. The always-on blue light filter not only helps reduce digital eye strain, but also guarantees colour integrity.

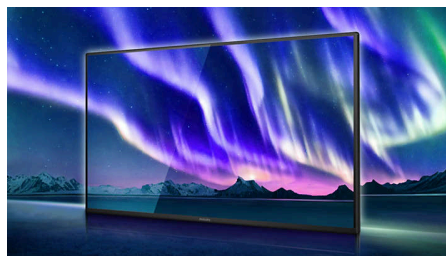
SmartErgoBase



The SmartErgoBase is a monitor base that delivers ergonomic display comfort and provides cable management. The base can swivel, tilt and

rotate to various angles to ensure maximum comfort. The height-adjustable stand guarantees the optimal viewing level, reducing the physical strains of a long workday, while cable management reduces cable clutter and keeps the workspace neat and professional.

Ultra-Slim Bezel



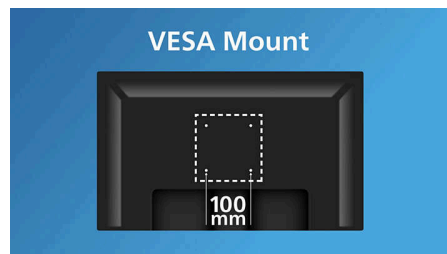
This monitor makes your viewing experience feel more seamless and complete by reducing the amount of frame surrounding the screen. The Ultra-Slim Bezel feature makes for an elegant transition from the screen to the narrow monitor bezel, thereby making it more beautiful in form and function.

HDMI Ready



An HDMI-ready device has all the required hardware to accept High-Definition Multimedia Interface (HDMI) input. An HDMI cable enables high-quality digital video and audio to be transmitted over a single cable from a PC or any number of AV sources (including set-top boxes, DVD players, A/V receivers and video cameras).

VESA mount for convenience



VESA mount for convenience

Specifications

Picture/Display

Panel Size: 31.5 inch/80 cm
Aspect ratio: 16:9
LCD panel type: IPS technology
Backlight type: W-LED system
Pixel pitch: 0.2727 x 0.2727 mm
Brightness: 350 cd/m²
Display colours: 1.07B (10 bits)
Colour gamut (typical): NTSC area: 102%, sRGB area: 113%*
Contrast ratio (typical): 1000:1
SmartContrast: 50,000,000:1
Response time (typical): 4 ms (Grey to Grey)*
Viewing angle: 178° (H)/178° (V), @ C/R > 10
Picture enhancement: SmartImage
Maximum resolution: 2560 x 1440 @ 100 Hz
Effective viewing area: 698.112(H) x 392.688(V) mm
Scanning Frequency: 30 kHz-150 kHz (H)/48-100 Hz (V)
sRGB
SoftBlue
Flicker-free
Pixel Density: 93 PPI
Display Screen Coating: Anti-Glare, 3H, Haze 25%
EasyRead
Adaptive sync
EyeSafe
Smart Link Sync: When used as a secondary monitor only*

Connectivity

Signal Input: HDMI 2.0 x 2, DisplayPort 1.2 x 1
Sync Input: Separate Sync, Sync on Green
Audio (In/Out): Audio out x 1
HDCP: HDCP 1.4 (HDMI/DisplayPort); HDCP 2.2 (HDMI/DisplayPort)
USB Hub: USB3.2, Gen1, 5G, Upstream: 1 x USB-B, Downstream: USB-A x 4 (with x 1 fast charge B.C 1.2)

Convenience

Built-in Speakers: 2 W x 2
Plug and Play Compatibility: DDC/CI, Mac OS, sRGB, Windows 11/10
User convenience: SmartImage, Input, Brightness, Menu, Power On/Off
OSD Languages: Brazil Portuguese, Czech, Dutch, English, French, Finnish, German, Greek, Hungarian, Italian, Japanese, Korean, Portuguese, Polish, Russian, Simplified Chinese,

Spanish, Swedish, Traditional Chinese, Turkish, Ukrainian
Other convenience: Kensington lock, VESA mount (100 x 100 mm)
Control software: SmartControl

Stand

Height adjustment: 180 mm
Pivot: -/+90 degree
Swivel: -/+ 180 degree
Tilt: -5/30 degree

Power

ECO mode: 14 W (typ.)
Power supply: Built-in, 100–240 VAC, 50–60 Hz
Off mode: 0.3 W (typ.)
On mode: 20.05 W (typ.) (Energy Star test method)
Standby mode: 0.3 W (typ.)
Power LED indicator: Operation - White, Standby mode - White (flashing)
Energy Label Class: C

Dimensions

Packaging in mm (W x H x D): 840 x 510 x 159 mm
Product without stand (mm): 714 x 423 x 61 mm
Product with stand (max height): 714 x 627 x 299 mm

Weight

Product with packaging (kg): 13.34 kg
Product with stand (kg): 9.58 kg
Product without stand (kg): 6.78 kg

Operating conditions

Altitude: Operation: +12,000 ft (3658 m), Non-operation: +40,000 ft (12,192 m)
Temperature range (operation): 0°C to 40 °C
Relative humidity: 20%-80 %
Temperature range (storage): -20°C to 60 °C
MTBF (demonstrated): 70,000 hrs (excluded backlight)

Sustainability

Environmental and energy: EPEAT*, RoHS, Energy Star
Post-consumer recycled plastic: 85%
Recyclable packaging material: 100 %
Specific Substances: Mercury free, PVC/BFR free housing

Compliance and standards

Regulatory Approvals: CB, CE Mark, ETL, CEC, TUV/GS, TUV Ergo, TCO Certified, TCO Certified Edge, EAC, EAC ROHS, MEPS, UKCA, EMF, FCC, ICES-003, eyesafe® CERTIFIED 2.0, TÜV Rheinland Low Blue Light (Hardware Solution)
Warranty: 5 years

Cabinet

Finish: Texture
Foot: Black
Front bezel: Black
Rear cover: Black

What's in the box?

Cables: HDMI cable, DP cable and Power cable
Monitor with stand
User Documentation



* Radius of the arc of the display curvature in mm
 * Response time value equal to SmartResponse
 * sRGB Area based on CIE1931, NTSC Area based on CIE1976.
 * This monitor supports Smart Link Sync only when used as a secondary monitor in a daisy-chain configuration, connected to a primary monitor that also supports Smart Link Sync.
 * EPEAT rating is valid only where Philips registers the product. Please visit <https://www.epeat.net/> for registration status in your country.
 * The 5 year warranty is a voluntary manufacturer's limited warranty. It applies only in the countries listed on this page <https://www.philips.co.uk/c-e/so/monitors/tco-certified-edge>. For consumers, it is provided in addition to, and without affecting, their legal rights under applicable national laws. For non-consumer (business/professional) end users, only the manufacturer's limited warranty terms apply.
 * The monitor may look different from feature images.
 * The products and accessories listed on this leaflet may differ by country and region.