

# PHILIPS



## 17-in-1 trimmer

All-in-One Trimmer 7000  
Series

17-in-1: face, head and body  
Premium precision comb  
Self-sharpening steel blades  
BeardSense technology



MG7961/15

## One tool, ultimate precision

For face, hair and body

Our All-in-One trimmer offers the versatility and precision you need with 17 quality tools designed for face, head and body. Self-sharpening blades stay as sharp as they were on day 1, and the premium precision comb helps you achieve look and style you want.

### Precise, even trim

- 17 tools for all your grooming needs
- An even trim at a precise length for your perfect look
- Maximum precision with long-lasting performance

### Versatile styling for face, head and body

- Trim body hair comfortably, even in sensitive areas
- Powerful trimming even on the most demanding of beards
- Get the details right
- Clip your hair, your way
- Add sharp and even definition to your final look

### Quality & Ease of use

- 100% showerproof for convenient grooming, wet or dry
- Stay aware for each shave and trim
- Powerful 4 week performance on a single charge\*
- For more control and comfort while trimming

# All-in-One Trimmer 7000 Series

17-in-1 trimmer

MG7961/15

## Highlights

### 17-in-1 trimmer



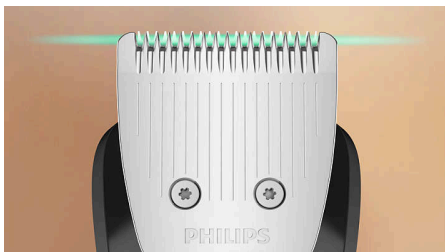
Our trimmer comes with 17 tools so you can trim and style your facial hair, clip your hair and groom your body, conveniently covering all your grooming needs.

### Premium precision comb



Our premium precision comb, with 11 length settings in 0.2 mm increments from 1 to 3 mm, delivers maximum precision to trim to the exact length you want for your perfect look.

### Self-sharpening steel blades



Self-sharpening steel blades deliver added strength for maximum precision as you trim, staying as sharp as day 1 with no blade oil required.

### BeardSense technology



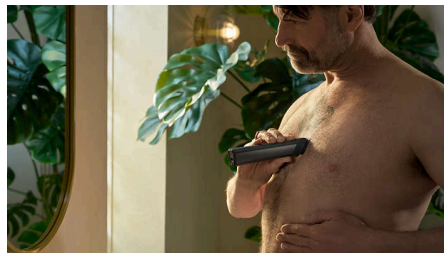
With BeardSense Technology, our trimmer scans your beard density 125 x per second to boost power in denser areas, giving you the right power for the best result.

### Precision beard styling



The trimmer's multi-comb set comes with 26 length settings from 0.5 mm up to 20 mm in precise increments up to 0.2 mm, so you can style your beard long or short. The detail trimmer's narrow design also gives added precision to create sharp lines and fine details, while the metal trimmer cleans your cheeks, chin and neck to get your beard exactly how you like it.

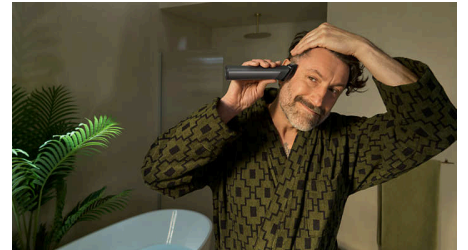
### Comfortable body grooming



Experience a close and comfortable trim below the neck with our innovative new body blade. This specially designed trimmer features

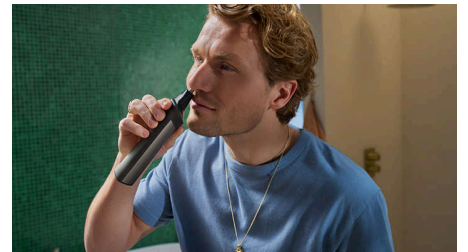
rounded tips that ensure a gentle touch, making it perfect for the most sensitive areas of your body.

### Easy hair clipping



The trimmer's multi-comb system allows you to choose length settings from 0.5 mm to 20 mm to easily maintain your hairstyle at home.

### Nose/ear/eyebrow trimming



The nose/ear trimmer attachment removes unwanted nose and ear hair quickly and safely. Easily keep your eyebrows neat and tidy with the dedicated eyebrow comb.

### Up to 120 minutes runtime



Our durable lithium battery delivers up to 120 minutes of runtime with a 5 minute quick-charge option\*\*, for a powerful, continual trimming experience.

# All-in-One Trimmer 7000 Series

17-in-1 trimmer

MG7961/15

## Highlights

### 100% showerproof



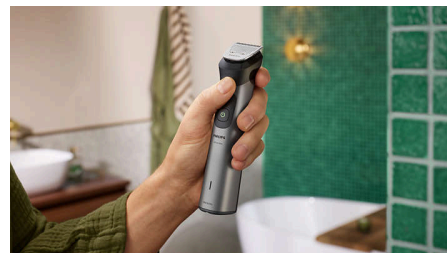
Being 100% showerproof, you can use the trimmer both wet and dry for a comfortable, convenient experience, every time. Plus it's easy to clean, too.

### Battery life indicator



The battery indicator keeps you fully informed of your battery status, whether it's low, empty, fully charged or still charging, ensuring that you're always ready for your next grooming session.

### Premium ergonomic grip



Our ergonomic grip makes the device easy to hold and manoeuvre, providing you with the superior comfort and control you need to perfect your look.

# All-in-One Trimmer 7000 Series

17-in-1 trimmer

MG7961/15

## Specifications

### Accessories

**Convenience:** Cleaning brush, USB-A (no adapter included)

**Travel and storage:** Travel Pouch

### Power

**Charging:** 60 minutes, USB-A Charging (5 V= / ≥1 A)

**Battery type:** Lithium Li-ion

**Run time:** 120 minutes

**Battery status:** Charging indicator, Low battery indicator

### Service

**Warranty:** Up to 5 years\*\*\*

### Ease of use

**Wet & Dry:** 100% shower proof

**Travel solution:** Travel lock attachment

### Consumer Trade Item

**Height:** 23 cm

**Width:** 16 cm

**Length:** 7 cm

**Net weight:** 0.336 kg

**Gross weight:** 0.52 kg

**GTIN:** 8720689045018

**Country of origin:** ID

**Harmonized system code:** 85103000

### Outer Carton

**Height:** 17.5 cm

**Width:** 23.9 cm

**Length:** 29.1 cm

**Net weight:** 1.344 kg

**Gross weight:** 2.265 kg

**GTIN:** 18720689045015

### Pallet Layer

**Height:** 17.5 cm

**Width:** 71.7 cm

**Length:** 116.4 cm

### Pallet

**Height:** 122.5 cm

**Width:** 71.7 cm

**Length:** 116.4 cm

**Net weight:** 112.896 kg

**Gross weight:** 193.12 kg

**GTIN:** 68720689045010

### Summary

**Body area:** Face, Hair and Body

**Tools and accessories:** 17

**Length settings:** 0.5 – 20 mm, 26

**Precision steps:** Control up to 0.2 mm

### Styling tools

**Specialised:** Metal trimmer, Nose trimmer, Detail trimmer, Body trimmer, Self-sharpening blades, BeardSense technology, Premium precision comb

### Combs

**Adjustable:** 3-7 mm, 9-13 mm, 16-20 mm

**Body:** 3 mm, 5 mm

**Stubble:** 1 mm, 2 mm

**Eyebrow:** 6 mm

**Premium precision comb:** 1-3 mm

**Face:** SkinProtect comb

**Body intimate:** 1 mm

