

# PHILIPS

## EVNIA



4K UHD gaming  
monitor

Fast IPS Gaming monitor

Evnia 3000

27" (68.5 cm)

3840 x 2160 (4K UHD)



27M2N3800F

## Broaden your gaming horizon

Game in incredible color and sharpness. With this Evnia monitor, the 4K UHD resolution and 160Hz refresh rate make it ideal for gamers who need that extra boost in imagery without sacrificing speed.

### Features designed for gamers needs

- Stark ShadowBoost: for enhancing visibility in dark scenes
- Smart Sniper: for zooming in on targets
- Evnia Precision Center: Maximize Your Gaming Experience
- Smart MBR: for reducing motion blur.
- SmartImage game mode optimized for gamers
- MultiView enables simultaneous dual connection and view
- LowBlue mode and Flicker-free easy-on-the eyes viewing
- Smart Crosshair: for better aim and more fun

### Built for fast action

- Dual Mode: The flexibility to match your gameplay
- 0.3 ms ultra-fast speed for crisp image and smooth gameplay

### Immersive visuals

- SmartContrast for rich black details
- UltraClear 4K UHD (3840x2160) resolution for precision

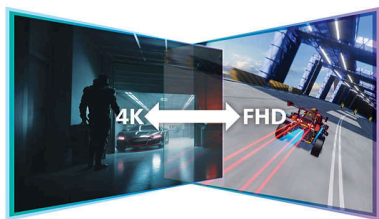
# Fast IPS Gaming monitor

4K UHD gaming monitor

27M2N3800F/75

## Highlights

### Dual Mode



Experience the best of both worlds with Dual Mode. Seamlessly toggle between 3840 x 2160 @ 160Hz for stunning clarity and 1920 x 1080 @ 320Hz for ultra-smooth gameplay. Whether you crave breathtaking visuals or high-speed action, this monitor adapts to your needs in an instant.

### 0.3 ms Smart MBR fast response



Philips display with 0.3 ms Smart MBR effectively eliminates smearing and motion blur, delivers sharper and precise visuals to enhance gaming experience. Fast-moving action and dramatic transitions will be rendered smoothly. Best choice for playing thrilling and twitch-sensitive games.

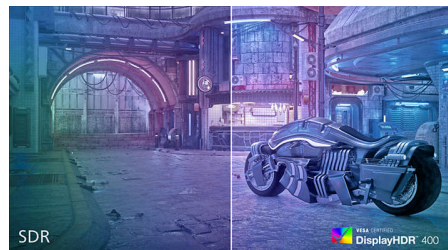
### UltraClear 4K UHD resolution



These Philips displays utilize high performance panels to deliver UltraClear, 4K UHD (3840 x 2160) resolution images. Whether you are

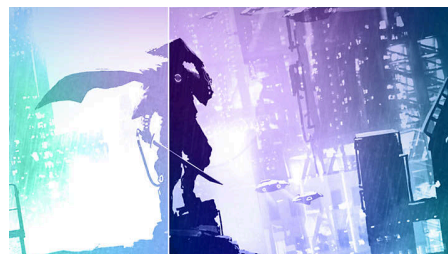
demanding professional requiring extremely detailed images for CAD solutions, using 3D graphics applications or a financial wizard working on huge spreadsheets, Philips displays will make your images and graphics come alive.

### DisplayHDR 400



VESA-certified DisplayHDR 400 delivers a significant step-up from normal SDR displays. Unlike, other 'HDR compatible' screens, true DisplayHDR 400 produces astonishing brightness, contrast and colors. With global dimming and minimum 400 nits brightness, images come to life with notable highlights while featuring deeper, more nuanced blacks. It renders a fuller palette of rich new colors, delivering a visual experience that engages your senses.

### SmartContrast



SmartContrast is a Philips technology that analyzes the contents you are displaying, automatically adjusting colors and controlling backlight intensity to dynamically enhance contrast for the best digital images and videos or when playing games where dark hues are displayed. When Economy mode is selected,

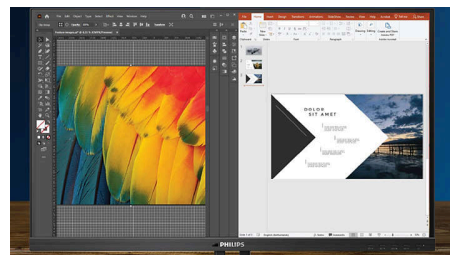
contrast is adjusted and backlighting fine-tuned for just-right display of everyday office applications and lower power consumption.

### LowBlue mode & Flicker-free



Our LowBlue Mode and Flicker-free technology have been developed to reduce eye strain and fatigue often caused by long hours in front of a monitor.

### MultiView technology



With the ultra-high resolution Philips MultiView display you can now experience a world of connectivity. MultiView enables active dual connect and view so that you can work with multiple devices like a PC and notebook simultaneously, for complex multi-tasking.



Dual Mode



Fast Response  
0.3ms



LowBlue Mode



Multiview



SmartImage  
Game



Flicker-free

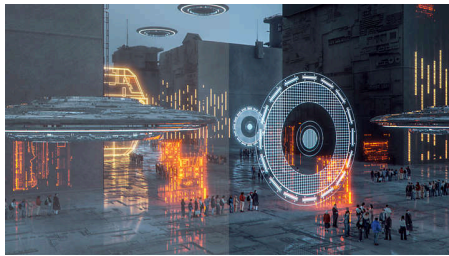
# Fast IPS Gaming monitor

4K UHD gaming monitor

27M2N3800F/75

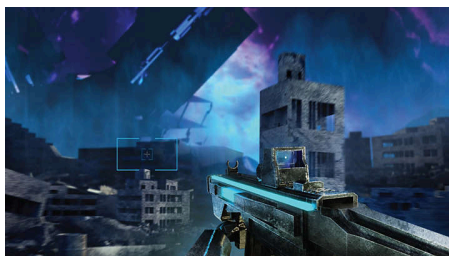
## Highlights

### SmartImage Game mode



The new Philips gaming display has quick access OSD fine tuned for gamers, offering you multiple options. "FPS" mode (First person shooting) improves dark themes in games, allowing you to see hidden objects in dark areas. "Racing" mode adapts display with fastest response time, high color, along with image adjustments. "RTS" mode (Real time strategy) has a special SmartFrame mode which enables highlighting of specific area and allows for size and image adjustments. Gamer 1 and Gamer 2 enable you to save personal customized settings based on different games, ensuring best performance.

### Smart Crosshair



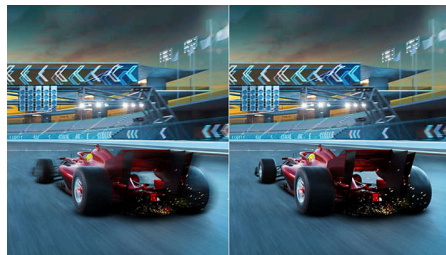
Color of Crosshair is set by default. When Smart Crosshair is on, the color will change as complementary color to the background color. Smart Crosshair enhances the accuracy of aiming so you can spot the enemies more easily.

### Stark ShadowBoost



This feature enhances dark scenes without overexposing lightened areas. The Stark Shadowboost feature has three selectable levels that offer texturized images with better color saturation with higher contrast so you can see better in both light and dark environments. In addition, this feature helps you fine-tune your sight so that enemies get exposed more quickly when gaming.

### Smart MBR



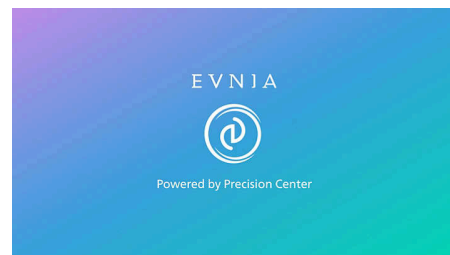
In an effort to reduce motion blur, this monitor's LED backlight will work simultaneously with the refresh rate to control brightness levels for the best picture clarity. Please note that Smart MBR is a type of gaming mode and it is recommended to turn the function off when not gaming as it may cause screen-flickering.

### Smart Sniper



This feature enables you to zoom in to multiple targets at once; ultimately making it easier to aim and hit your enemies.

### Evnia Precision Center



Evnia Precision Center is an easy-to-use software designed to optimize and personalize your Evnia monitor. Whether you're a casual or competitive gamer, it offers a wide range of customization options to match your unique gaming style. With intuitive controls and seamless navigation, Evnia Precision Center gives you full control, providing everything you need to elevate your gaming to the next level—right at your fingertips.



# Fast IPS Gaming monitor

4K UHD gaming monitor

27M2N3800F/75

## Specifications

### Picture/Display

**Panel Size:** 27 inch / 68.5 cm

**Aspect ratio:** 16:9

**LCD panel type:** Fast IPS

**Backlight type:** W-LED system

**Pixel pitch:** 0.15525 x 0.15525mm

**Brightness:** 450 cd/m<sup>2</sup>

**Display colors:** 1.07G (8bits+FRC)

**Color gamut (typical):** Adobe RGB 90%; DCI-P3:95%, sRGB: 130%, NTSC 110% \*

**Contrast ratio (typical):** 1000:1

**SmartContrast:** Mega Infinity DCR

**Response time (typical):** 1 ms (Gray to Gray)\*

**Viewing angle:** 178° (H) / 178° (V), @ C/R > 10

**Picture enhancement:** SmartImage game

**Maximum resolution:** 3840x2160@160 Hz

(HDMI/DP), 1920x1080@320Hz (HDMI/DP)

**Effective viewing area:** 596.16(H) x 335.34(V)mm

**Scanning Frequency:** 30K-360K Hz (H)/ 48-160Hz (V)

**sRGB**

**Delta E:** Delta <2 (sRGB)

**Flicker-free**

**Pixel Density:** 163 PPI

**LowBlue Mode**

**Display Screen Coating:** Anti-Glare, 3H, Haze 25%

**SmartUniformity:** 93~105%

**Low Input Lag:** Yes \*

**Adaptive sync**

**HDR:** HDR 400

**Smart Sniper**

**Smart MBR:** 0.3ms\*

**Stark Shadow Boost**

**Smart Crosshair**

### Connectivity

**Signal Input:** HDMI 2.1 x 1, DisplayPort 1.4 x 1

**Sync Input:** Separate Sync

**Audio (In/Out):** Headphone out

**HDCP:** HDCP 1.4 (HDMI / DP), HDCP 2.3 (HDMI / DP)

### Convenience

**Plug & Play Compatibility:** DDC/CI, Mac OS, sRGB, Windows 11 / 10

**User convenience:** Power On/Off, Menu/OK, Input/Up, Game Settings/Down, SmartImage game/Back

**OSD Languages:** Brazil Portuguese, Czech, Dutch, English, Finnish, French, German, Greek, Hungarian, Italian, Japanese, Korean, Polish, Portuguese, Russian, Spanish, Simplified Chinese, Swedish, Turkish, Traditional Chinese, Ukrainian

**Other convenience:** Kensington lock, VESA mount (100x100mm), LowBlue Mode, Low blue light

**MultiView:** PIP/PBP mode, 2x Devices

### Stand

**Tilt:** -5/20 degree

### Power

**Power supply:** Internal, 100-240VAC, 50-60Hz

**Off mode:** 0.3 W (typ.)

**On mode:** 36.81 W (typ.)

**Standby mode:** 0.5 W (typ.)

**Power LED indicator:** Operation - White, Standby mode - White (blinking)

### Dimensions

**Packaging in mm (WxHxD):** 690 x 420 141 mm

**Product without stand (mm):** 615 x 369 x 61 mm

**Product with stand(max height):** 615 x 463 x 216 mm

### Weight

**Product with packaging (kg):** 7.45 kg

**Product with stand (kg):** 5.00 kg

**Product without stand (kg):** 4.45 kg

### Operating conditions

**Altitude:** Operation: +12,000ft (3,658m), Non-operation: +40,000ft (12,192m)

**Temperature range (operation):** 0°C to 40 °C

**MTBF:** 50,000 (Excluded backlight) hour(s)

**Relative humidity:** 20%-80 %

**Temperature range (storage):** -20°C to 60 °C

### Sustainability

**Environmental and energy:** RoHS

**Recyclable packaging material:** 100 %

**Post consumer recycled plastics:** 85%\*

### Compliance and standards

**Regulatory Approvals:** CB, CE Mark, CEL, CCC, CEC, UKCA, EMF, FCC, ICES-003

### Cabinet

**Color:** Charcoal

**Finish:** Textured



\* "IPS" word mark / trademark and related patents on technologies belong to their respective owners.  
\* Adobe RGB and DCI-P3 Coverage based on CIE1976, sRGB Area based on CIE1931, NTSC Area based on CIE1976.  
\* For best output performance, please always ensure that your graphic card is capable of achieving the maximum resolution and refresh rate of this Philips display.  
\* Response time value equal to SmartResponse  
\* Smart MBR is to adjust brightness for blur reduction, so cannot adjust brightness while Smart MBR is turned on. To reduce motion blur, LED backlight will strobe synchronously with screen refresh, which may cause noticeable brightness change.  
\* Smart MBR is gaming-optimized mode. Turn on Smart MBR may cause noticeable screen flickering. It is recommended to turn off when you are not using the gaming function.  
\* Please note that the low input lag feature is permanently enabled and cannot be switched off.  
\* This monitor strives for sustainability: the stand's feet and headphone holder are made with 35% recycled plastic and monitor's chassis is made up of 85% post-consumer recycled plastic.  
\* The products and accessories listed on this leaflet may differ by country and region.  
\* The monitor may look different from feature images.