

PHILIPS



2D flex head & dual
trim-shave system

Body Groomer 7000 Series

Triple protect shave system

2D Flexing head

Skin-friendly trimmer blades

Close results on skin



BG7470/15

Complete, versatile body & intimate grooming

For a precise, skin-safe trim across the body

The unique dual head system allows you to effortlessly switch between shaving and trimming, without compromising on skin comfort. With 2D flexing head technology, the shaver adapts to your body's curves, catching even the stubborn hairs.

Close results on skin

- Smooth, close shaving to 0.2mm in length

Versatile styling across the body

- Dual-head system for a close shave or styled trim
- Adapts the shaver head to your body's contours
- Shape your style with an even, precise trim
- Craft your look with different lengths

Skin-friendly, comfortable body grooming

- Patented cutting technology to be gentle on skin
- An efficient, comfortable trim every time
- Uniquely designed comb for a gentle trim in sensitive areas

Built to last and easy to use

- Integrated optilight for enhanced guidance
- 100% showerproof for convenient grooming, wet or dry
- Consistent powerful performance from start to finish

Body Groomer 7000 Series

2D flex head & dual trim-shave system

BG7470/15

Highlights

Dual head trim & shave system



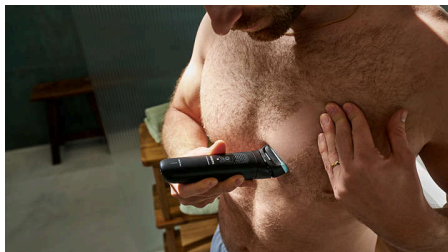
The innovative dual-head system offers you a smooth, close shave that leaves your skin feeling soft and refreshed, or a precise trimmed look that perfectly complements your unique style. This groomer has the versatility you need.

Triple Protect shave system



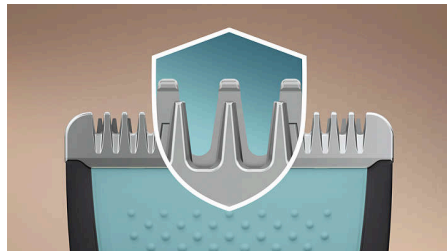
The Triple Protect shave system has pearl tips for enhanced skin comfort, diamond-shaped holes for effortless skin doming while the guard significantly minimizes skin irritation.

2D flexing head



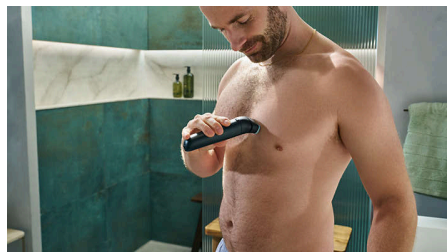
With contour following technology, the 2D Flexing head adapts the shaver head to follow the contours of your body areas. Catching even the difficult hairs.

Trimmer with rounded tips



Our uniquely engineered blade technology with rounded tips is specifically crafted to be gentle on the skin, providing a more comfortable trimming experience.

Close results on skin



Shaving to 0.2mm, our cutting technology gives you the close and precise grooming experience you need. Featuring our diamond-shaped shaver foil that works seamlessly to ensure a smooth, even finish, leaving your skin feeling soft and refreshed.

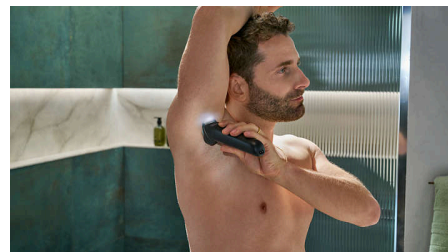
Optilight functionality



The built-in optilight provides valuable guidance, helping you target and remove every hair, including the stubborn ones in hard-to-see areas

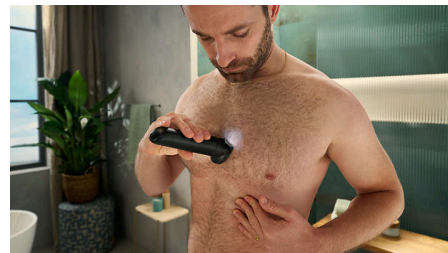
or low-light situations. Better visibility gives you a precise and thorough shave for an enhanced grooming experience.

Adjustable precision comb



The precision comb, with length settings in 0.5 mm steps from 1 to 3 mm, helps you achieve your ideal look by giving you an even trim at your desired length.

Adjustable comb (3-7 mm)



The adjustable comb with 3 to 7mm length settings gives you the control to craft your style at the ideal length you desire.

Intimate Comb



The intimate comb has been uniquely designed to guard the skin of your sensitive areas from the blade as you trim, delivering extra gentleness.

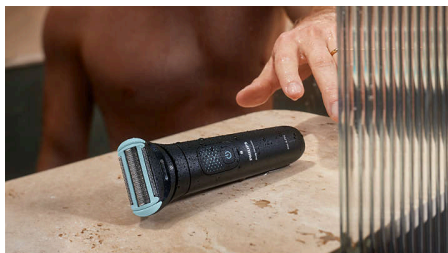
Body Groomer 7000 Series

2D flex head & dual trim-shave system

BG7470/15

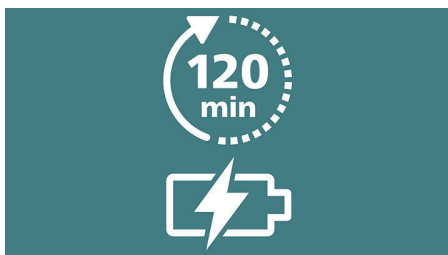
Highlights

100% showerproof



Being 100% showerproof you can use the body groomer both wet and dry for a comfortable, convenient experience, every time. Plus it's easy to clean too.

Up to 120 minutes runtime



Our durable lithium battery delivers up to 120 minutes of runtime with 5-minute quick charge option*, for a powerful, continual trimming experience.

Travel pouch



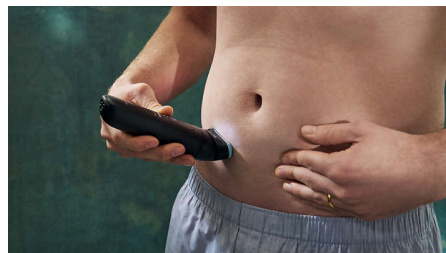
Keep all your attachments in the travel pouch with a zipper for easy organization and travel.

Battery life indicator



The battery indicator keeps you fully informed of your battery status, whether it's low, empty, fully charged, or still charging, ensuring you're always ready for your next grooming session.

Ergonomic grip



Our ergonomic grip makes the device easy to hold and maneuver, providing you with the comfort and control you need to perfect your look.

Body Groomer 7000 Series

2D flex head & dual trim-shave system

BG7470/15

Specifications

Accessories

Convenience: Cleaning brush, USB-A (no adapter included)

Travel and storage: Zippered soft fabric pouch, Travel lock

Power

Run time: 120 minutes

Charging: 1 hour, 5 min quick charge

Battery type: Lithium

Battery status: Low battery indicator

Usage: Cordless

Design

Finishing: Deep black

Handle: Ergonomic grip

Service

Warranty: Up to 5 years**

Ease of use

Maintenance free: No blade oil required

Reach: Optilight

Water resistance: Wet & Dry

Summary

Body area: Body

Solution: Trim & Shave

Styling tools

Trimming blade: Skin friendly blades

Styling tools

Shaving system: Triple Protect shave system, 2D flexing head

Combs

Precision guard: 1-3mm fine 0.5mm control

Adjustable: 3-7mm

Intimate: 1mm

