

PHILIPS

Hairdryer

DryCare Advanced

ThermoProtect

2100W

6 heat & speed settings

Cool shot



HP8230/00

Fast dry at a lower temperature with ThermoProtect with 14mm styling nozzle.

Protect your hair while still enjoying fast drying results. Choose from multiple speed and temperature settings to get the blow dry you want or select ThermoProtect for fast drying at a constant caring temperature.

Easy to use

- 1.8 m power cord
- Easy storage hook for convenient storage
- Removeable air flow filter makes cleaning quick and easy

Beautifully styled hair

- Professional 2100W for perfect salon results
- Six flexible speed and temperature settings for full control
- Perfect styling results with a slim styling nozzle
- Cool Shot sets your style

Less Hair Damage

- ThermoProtect temperature setting

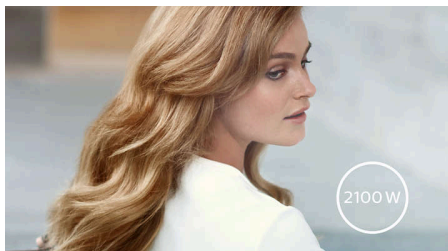
Highlights

ThermoProtect temperature



The ThermoProtect temperature provides the optimal drying temperature and gives additional protection from overheating the hair. With the same powerful airflow, you will get the best results in a caring way.

Professional 2100W



This 2100W professional hairdryer creates a powerful airflow. The resulting combination of power and speed makes drying and styling your hair quicker and easier.

Speed and temperature settings



The speed and heat required can be easily adjusted to create the perfect style. Six different settings ensure full control for precise and tailored styling.

Cool Shot



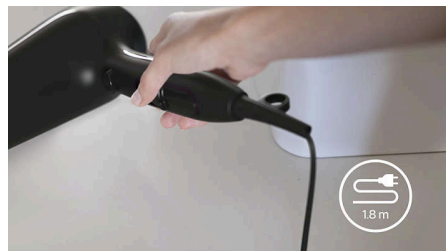
A must-have professional function for hair stylists. The Cool Shot button provides an intense burst of cold air. It is used after styling to finish and set the style.

Slim styling nozzle



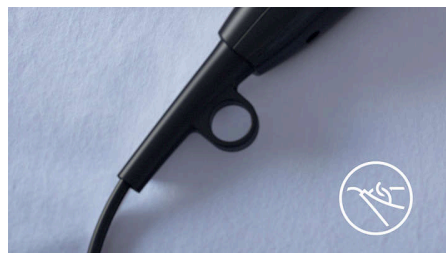
Perfect styling results and a shiny, polished look with a slim styling nozzle for precise styling.

1.8 m cord



Convenient to use thanks to the 1.8m power cord length.

Easy storage hook



The rubberised hook is located at the base of the handle and provides another storage option, particularly convenient for use in the home or when staying at a hotel.

Removeable air inlet filter



The removeable air flow filter of your hairdryer is easy to maintain. Simply click off to clean. Doing this regularly will prevent build up of dust and hair that can affect drying performance.

Specifications

Weight & dimensions

A-Box Dimensions: Height = 25cm,

Length = 63cm, Width = 35cm

A-Box Weight: 5.7kg

Product size: Height = 31cm, Length = 10cm,

Width = 22cm

F-Box Dimensions: Depth = 11cm,

Height = 23cm, Width = 31cm

Product weight (excl. pack): 0.6kg

F-Box weight: 0.8kg

Technical specifications

Cord length: 1.8 m

Color/finishing: High Gloss & Mat Black

Power: 2100 W

Voltage: 220-240 V

Frequency: 50-60 Hz

Wattage: 2100 W

Motor: DC Motor

Housing material: ABS

Features

Foldable handle: No

Ceramic coating: No

Diffuser: No

Cool shot

Dual voltage: No

Travel pouch: No

Hanging loop

Ion conditioning: No

Number of attachments: 1

Nozzle / Concentrator: Slim styling 14mm nozzle

Service

2-year guarantee

