

PHILIPS



IPL Hair removal
device with SenselQ

BRI984 - Lumea IPL 9000
Series

Smartskin sensors

5 intensity settings

4 attachments

Lumea IPL app



BRI984/03

Long lasting hair-free smooth skin*

50% fewer treatments than other leading brands**

Philips Lumea 9000 SenselQ is clinically proven to effortlessly achieve years of smooth skin***, with 4 dedicated attachments for face, body, underarms & bikini to provide you gentle and effective care even on delicate areas.

Convenient hair removal comfortably at home

- Less treatment time frees you for what truly matters.
- Luxury box

Personalized treatment with Philips Lumea IPL App

- Philips Lumea IPL app to optimize your routine

Suitable for different body areas and skin tones

- Suitable for a range of skin tones and hair colors
- 4 attachments designed for your body, face, bikini & armpit

Clinically tested and proven

- Clinically-proven effectiveness

Gentle, fast and effective hair reduction

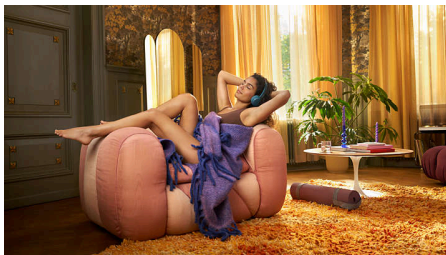
- 5 year warranty

BRI984 - Lumea IPL 9000 Series

IPL Hair removal device with SenselQ

Highlights

Long lasting hair reduction



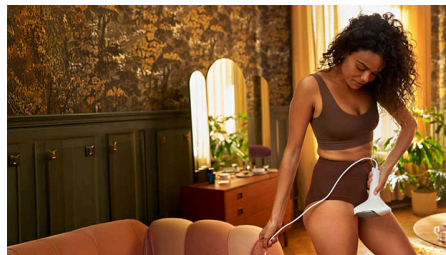
Lumea IPL uses unique warm, gentle SmartPulse light technology to put hair to rest, preventing it from growing back for long-lasting smooth skin. It only takes you 3 treatments to achieve up to 90% hair reduction on lower legs****. You can enjoy salon like hair removal adapted for safe and gentle use in the comfort of your home.

SenselQ technology



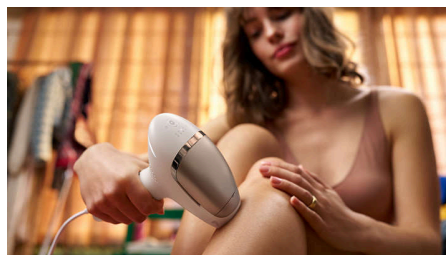
Our SenselQ technology is here for a personalized hair removal treatment. The skin contact sensor ensures you have skin contact, avoids flashing in the eyes and making sure you do not need goggles. The SmartSkin sensor suggests right intensity for gentle use for comfort in every flash.

4 attachments



Unique curved attachments ensures optimal skin contact for gentle treatment. The body attachment is curved for treating large areas like legs. It also enables faster treatment with our largest window. The face filter is designed for extra care for gentle use on delicate facial skin*****. Two precision attachments for hygienic and effective use on bikini and underarm areas.

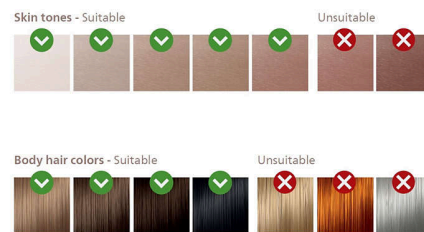
Treatment schedule



Treat every two weeks for the first four treatments, then save time by touching-up once a month. That's it, it takes only 11 minutes to cover both lower legs*****.

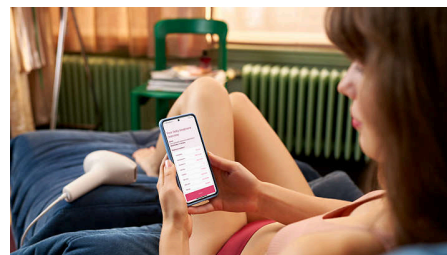
BRI984/03

For a range of skin tones



IPL requires contrast between the pigments in the hair color and the skin tone and therefore works on naturally dark blonde, brown and black hair and on skin tones from fair to medium brown. Check the chart to see if it's suitable for you. Choose from five light intensity settings to tailor your treatment so it's most comfortable for you.

Philips Lumea IPL app



The free Lumea IPL app makes it easier than ever to achieve results through step-by-step guidance and smart scheduling to keep track of your treatments.

BRI984 - Lumea IPL 9000 Series

IPL Hair removal device with SenselQ

BRI984/03

Highlights

Clinically tested



Developed in cooperation with dermatologists and tested with more than 3,000 women, Philips Lumea delivers clinically-proven performance from the comfort of your home. It is FDA cleared and has been chosen by over 6 million consumers worldwide.

Luxury beauty box



Discover the luxury beauty box: a refined solution that effortlessly combines elegance with convenience, perfect for storing your device and attachments in style.

Warranty



Built for durability and effectiveness, Lumea comes with up to 5 years warranty and 90 day money back guarantee, ensuring your investment is protected. Say goodbye to frequent replacements and hello to long-lasting beauty. Beauty that lasts—because you deserve nothing less.

Specifications

Technical specs. attachments

Body treatment attachment: Shape: Curved, Window size: 4.1 cm², Tailored treatment for body: areas below neckline

Face treatment attachment: Shape: Flat + Red Filter, Window size: 2 cm², Tailored treatment for face: upper lip, chin and jawline

Bikini treatment attachment: Shape: Curved, Window size: 3 cm², Tailored treatment for sensitive bikini area

Underarm treatment attachment: Shape: Curved, Window size: 3cm², Tailored treatment for underarms

Safety and adjustable settings

Integrated UV filter: Protects skin from UV light

5 light energy settings: Adjustable to your skin type

Integrated safety system: Prevents unintentional flashing

SmartSkin sensor: The right setting indication on demand

SenselQ: Measures your skin tone & supports you in selecting a setting for a comfortable treatment

Application mode

Slide and Flash: For larger areas (legs)

Stamp and Flash: For small body areas (bikini, armpit)

Corded / cordless use: Corded use

Technical specifications

Voltage: 100 - 240 V

High performance lamp: 400.000 flashes

Service

Warranty: 2 years global warranty

Items included

Instructions for use: User manual

Storage: Luxury beauty box

Adapter: 19.5 V

Cord: 2 m

Application time

Lower leg: 11 min *****

Underarms: 2 min*****

Bikini line: 2 min*****

Face areas: 1.5 min*****

