

PHILIPS

True Wireless Headphones

Earbuds without ear tips

Natural sound. Dynamic bass

Pocket-sized charging case

Clear calls



TAT2139WT

Feel the music, not the earbuds

With no ear tips and a super-small charging case, these lightweight earbuds will let you rock your sounds in real comfort wherever you go. Dynamic Bass gives you deeper bass at low volumes, and the touch controls can be customized.

From favorite playlist to catch-up call

- Solid Bluetooth multipoint connection
- Connect to two Bluetooth devices at the same time
- Warm, natural sound. Philips sound signature

Up to 28 hours play time. Small charging case.

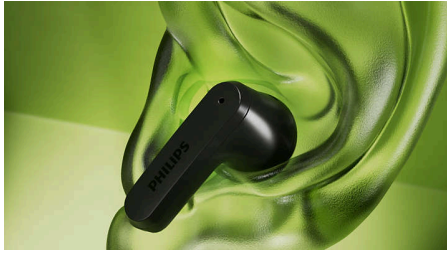
- Up to 28 hours play time. Pocket-size charging case
- Philips Headphones app. Customize earbud touch controls
- Assign play, pause, skip tracks, and volume to either earbud
- IPX4 splash and sweat resistant

True wireless earbuds. Great sound, no pressure

- Small, comfy earbuds. No ear tips, no pressure
- Earbuds sit securely in the outer ear
- Great sound even at low volume with Dynamic Bass
- 13 mm drivers and a bass-boost function
- Clear calls. They'll hear what you're saying

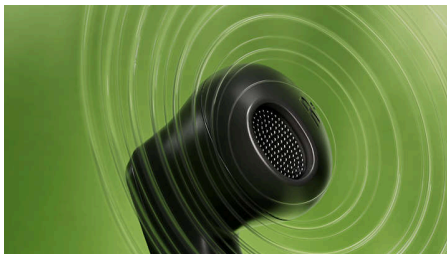
Highlights

Earbuds sit in outer ear



If you don't like the feeling of ear tips in your ear canal, these true wireless earbuds are for you! Each earbud sits in your outer ear, and the slender stems keep them secure. With no ear tips going into your ear canal, there's no sensation of pressure even during longer listening sessions.

Great sound. Dynamic Bass



These true wireless earbuds might be small, but you won't need to turn up the volume to get the best sound out of their 13 mm drivers. Activate

Dynamic Bass via the left earbud, or the Philips Headphones app, and you can enjoy the full power of your favorite basslines even if listening quietly.

Clear calls



When you're on a call, your voice will come through loud and clear! Two beamforming mics accurately pick up the sound of your voice while a noise reduction algorithm quietens some of the background noise from the world around you. You can take calls via the touch controls on either earbud.

Up to 28 hrs (7 + 21)

You get 7 hours play time from a full charge, and an extra 21 hours from the case. If you need a quick boost, pop the earbuds back in the case for just 15 minutes and you'll get an extra hour. It takes 2 hours to recharge the earbuds fully, and the case can be charged via USB-C.

Philips Headphones app

You can use the Philips Headphones app to manage which devices you're connected to. You can also allocate the touch controls for play, pause, skip tracks, and volume to the left or right earbud: super-handy if you're using mono mode to listen through just one earbud while the other one charges.

IPX4 splash/sweat resistant

With an IPX4 rating, these true wireless earbuds are fully splash resistant. They won't mind a little sweat and you don't need to worry about getting caught in the rain.

Solid Bluetooth connection

Advanced Bluetooth connectivity gives you a more stable connection for seamless streaming, and you can connect to two Bluetooth devices (iOS or Android) at the same time. Enjoy that playlist or listen uninterrupted to your favorite podcast without annoying dips in the sound.

Philips sound signature

Music to podcasts, you'll love what you hear! These true wireless earbuds feature large 13 mm drivers, tuned to the Philips sound signature. Whatever you're into, you'll enjoy a warm, natural sound with deep bass.

Specifications

Sound

Speaker diameter: 13 mm
Driver type: Dynamic
Impedance: 16 Ohm
Sensitivity: 94 dB (1k Hz, -10dBFs)
Frequency range: 20 - 20,000 Hz
Maximum power input: 10 mW

Connectivity

Bluetooth version: 5.3
Bluetooth profiles: A2DP, AVRCP, HFP
Maximum range: Up to 10 m
Multipoint connection
Supported codec: SBC

Outer Carton

Number of consumer packagings: 24
GTIN: 1 48 95229 14009 4
Length: 24.80 cm
Width: 22.30 cm
Gross weight: 2.763 kg
Nett weight: 1.42 kg
Tare weight: 1.343 kg
Height: 21.20 cm

Convenience

Water resistance: IPX4
Philips Headphones app support
Mono mode for TWS

Firmware updates possible

Type of controls: Touch
Google Fast Pair

Inner Carton

Number of consumer packagings: 3
GTIN: 2 48 95229 14009 1
Length: 11.50 cm
Width: 10.20 cm
Height: 9.00 cm
Gross weight: 0.305 kg
Nett weight: 0.18 kg
Tare weight: 0.125 kg

Power

Rechargeable
Number of batteries: 3 pcs
Music play time: 7 + 21 hour(s)
Charging time: 2 hour(s)
Fast charging time: 15 mins for 1 hr
Battery type(Charging case): Lithium Polymer (Built-in)
Battery type(Earbud): Lithium Polymer (Built-in)
Battery capacity(Earbud): 50 mAh
Battery capacity(Case): 520 mAh
Battery weight (Total): 12.5 g

Packaging dimensions

Packaging type: Carton
Type of shelf placement: Hanging
Number of products included: 1
EAN: 48 95229 14009 7

Height: 9.5 cm
Width: 9 cm
Depth: 3.3 cm
Gross weight: 0.085 kg
Nett weight: 0.059 kg
Tare weight: 0.026 kg

Accessories

Quick Start Guide
Charging case
Charging cable: USB-C cable, 200 mm

Design

Color: White
Wearing style: Earbud

Telecommunication

Microphone for call: 2 mics

Voice assistant

Voice assistant compatible: Apple Siri, Google Assistant
Voice assistant activation: Multi-Function touch
Voice assistant support

Dimensions

Earbud dimension(WxDxH): 2.05 x 1.90 x 2.90 cm
Charging case dimension(WxDxH): 5.10 x 2.60 x 4.40 cm
Total weight: 0.041 kg

