

PHILIPS

WQHD monitor with
USB-C

Curved Business monitor

3000 series

34" (86.36 cm)

3440 x 1440 (WQHD)

34B2U3600CH



Redefining workflow productivity with a pop-up webcam

With the Smart KVM switch, it's ideal for switching between sources without compromising on picture quality. Features like USB-C and the pop-up webcam with Windows Hello deliver the performance and convenience you expect.

Superb Picture Quality

- VA display delivers awesome images with wide viewing angles

Designed for the way you work

- Built-in stereo speakers for multimedia
- MultiView enables simultaneous dual connection and view
- Windows Hello Compatible – Seamless, Secure Access
- Eyesafe-certified blue light protection and colour accuracy
- Tilt, swivel and height-adjust for an ideal viewing position
- Curved display design for a more immersive experience
- SmartKVM: for easily switching between sources.
- Adjustable Webcam: for video conferencing in comfort.
- SoftBlue Technology: for comfortable viewing

Single cable USB-C connection

- RJ-45 to USB-C gives easy network connection with security

Superb Picture Quality

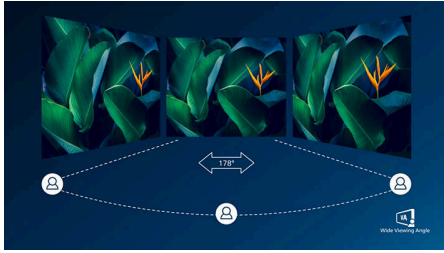
Curved Business monitor

WQHD monitor with USB-C

34B2U3600CH/00

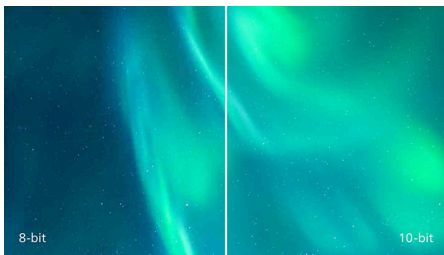
Highlights

VA display



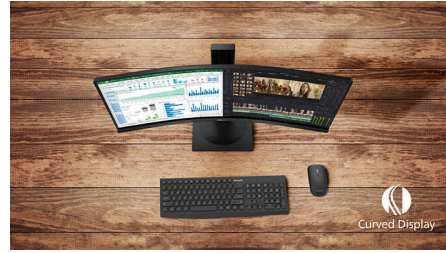
The Philips VA LED display uses an advanced multi-domain vertical alignment technology that gives you super-high static contrast ratios for extra-vivid and bright images. While standard office applications are handled with ease, it is especially suitable for photos, web browsing, films, gaming and demanding graphical applications. Its optimised pixel management technology gives you a 178/178 degree extra-wide viewing angle, resulting in crisp images.

10-bit colours



The 10 bit display delivers rich colour depth with 1.07 billion colours and 12 bit internal processing for re-creating smooth, natural colours without gradations or colour banding.

Curved display design



Desktop monitors offer a personal user experience, which suits a curved design very well. The curved screen provides a pleasant yet subtle immersion effect, which focuses on you at the centre of your desk.

Built-in stereo speakers



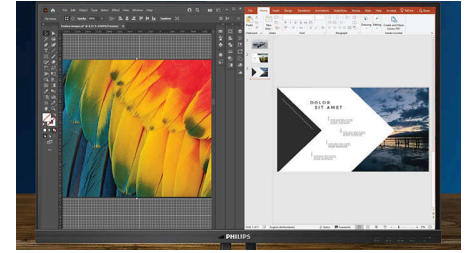
A pair of high-quality stereo speakers built into a display device. They may be visible front firing, or invisible down firing, top firing, rear firing etc. depending on model and design.

TUV Rheinland Eyesafe - RPF® 40



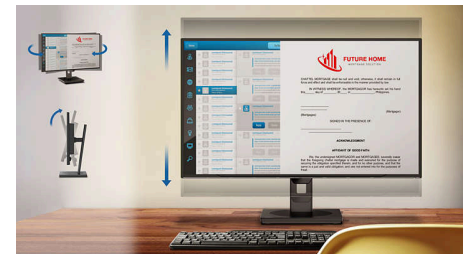
Philips display meets the TUV Rheinland Eyesafe® standard to truly protect you from long exposure to blue light. The always-on blue light filter not only helps reduce digital eye strain, but also guarantees colour integrity.

MultiView technology



With the ultra-high resolution Philips MultiView display, you can now experience a world of connectivity. MultiView enables active dual connect and view so that you can work with multiple devices like a PC and notebook simultaneously, for complex multitasking.

Compact Ergo Base



The Compact Ergo Base is a people-friendly Philips monitor base that tilts, swivels and height-adjusts so each user can position the monitor for maximum viewing comfort and efficiency.

SmartKVM



Unlike traditional built-in KVM monitor buttons, the smart KVM allows for switching between sources with the click of a button on your keyboard. When all devices are properly connected, users can easily switch between sources by clicking the "Ctrl" key three times.



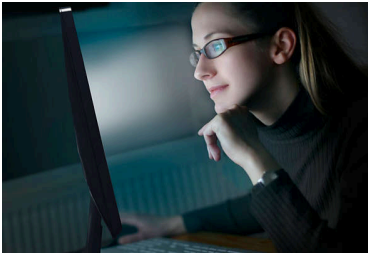
Curved Business monitor

WQHD monitor with USB-C

34B2U3600CH/00

Highlights

SoftBlue Technology with Low Blue Light Panel



SoftBlue technology offers increased visual comfort and protection against adverse health effects caused by prolonged exposure to blue light. With the low blue-light panel, the ratio of display emission light in the range of 415-455 nm to 400-500 nm is reduced to less than 50%. As a result, the SoftBlue technology provides optimal visual comfort, minimises eye strain and supports sustained focus. Not to mention, SoftBlue LED technology is tested and TÜV Rheinland Low Blue Light (Hardware Solution) certified for its effectiveness in reducing blue light emissions.

Adjustable webcam



Level up the comfort of video conferencing with this feature. By adjusting the webcam back and forth by 30 degrees, users can now comfortably call and attend meetings from any position that best suits them.

Windows Hello Compatible



Log in faster and more securely with Windows Hello. The webcam on this Philips monitor is compatible with Windows Hello, offering quick facial recognition and effortless access - every time you power on.

USB-C Docking with RJ45



Simplify all peripherals from monitor to PC using one-cable docking USB Type-C connector, including networking, high-resolution video output from PC to monitor, and surfing on the Internet without an additional network cable, even without a LAN port on your notebook. RJ45 connection through USB-C offers a fast and secure connection when needed. Getting the fastest data speeds allows you to transfer data from a HDD to your PC faster than ever. Additionally, USB-C with power delivery can even enable you to power and charge your notebook from the monitor, eliminating the need for extra power cables.

Curved Business monitor

WQHD monitor with USB-C

34B2U3600CH/00

Specifications

Picture/Display

Panel Size: 34 inch/86.36 cm

Aspect ratio: 21:9

LCD panel type: VA LCD

Backlight type: W-LED system

Pixel pitch: 0.23175 x 0.23175 mm

Optimum resolution: 3440 x 1440 @ 60 Hz

Brightness: 300 cd/m²

Display colours: 1.07B (10 bits)

Colour gamut (typical): NTSC area: 104%, sRGB area: 120%*

Contrast ratio (typical): 3500:1

SmartContrast: 50,000,000:1

Response time (typical): 4 ms (Grey to Grey)*

Viewing angle: 178° (H)/178° (V), @ C/R > 10

Picture enhancement: SmartImage

Maximum resolution: 3440 x 1440 @ 100 Hz

(HDMI), 3440 x 1440 @ 120 Hz (DP/USB-C)

Effective viewing area: 797.22 (H) x 333.72 (V) - at a 1500 R curvature*

Scanning Frequency: HDMI: 30K-160 KHz (H) /48 - 100 Hz (V), DP/USB-C: 30-190 KHz (H) / 48 - 120 Hz (V)

sRGB

SoftBlue

Flicker-free

Pixel Density: 110 PPI

Display Screen Coating: Anti-Glare, 3H, Haze 25%

EasyRead

Adaptive sync

HDR: HDR10 supported

EyeSafe

Connectivity

Signal Input: HDMI 2.0 x 2, DisplayPort 1.4 x 1, USB-C x 1 (upstream, DP Alt mode, data, PD)

Sync Input: Separate Sync, Sync on Green

Audio (In/Out): Audio out x 1

RJ45: Ethernet LAN (10M/100M/1G)

HDCP: HDCP 1.4 (HDMI/DisplayPort/USB-C);

HDCP 2.2 (HDMI/DisplayPort/USB-C)

HBR3

USB Hub: USB3.2, Gen1, 5G, upstream: USB-C1(Full)/USB-C2; downstream: USB-A x 4 (with x 1 fast charge B.C 1.2)

Power Delivery

Max power delivery: up to 90 W (5 V/3 A, 7 V/3 A, 9 V/3 A, 10 V/3 A, 12 V/3 A, 15 V/3 A, 20 V/3.25 A, 20 V/4.5 A)

Version: USB PD version 3.0

Convenience

Built-in Speakers: 5 W x 2

Plug and Play Compatibility: DDC/CI, Mac OS, sRGB, Windows 11/10

User convenience: SmartImage, Input, Brightness, Menu, Power On/Off

OSD Languages: Brazil Portuguese, Czech, Dutch, English, French, Finnish, German, Greek, Hungarian, Italian, Japanese, Korean, Portuguese, Polish, Russian, Simplified Chinese, Spanish, Swedish, Traditional Chinese, Turkish, Ukrainian

Other convenience: Kensington lock, VESA mount (100 x 100 mm)

Control software: SmartControl

MultiView: 2 x devices, PIP/PBP mode

Built-in webcam: 5.0 megapixel camera with microphone and LED indicator (for Windows Hello)

Webcam tilt function: Yes, -/+30 degree

SmartKVM: Yes, (USB-C1/USB-C2)*

Stand

Height adjustment: 180 mm

Swivel: -/+ 180 degree

Tilt: -5/30 degree

Power

ECO mode: 21.3 W (typ.)

Power supply: Built-in, 100–240 VAC, 50–60 Hz

Off mode: 0.3 W (typ.)

On mode: 28.26 W (typ.) (EnergyStar 8.0 test method)

Standby mode: 0.3 W (typ.)

Power LED indicator: Operation - White, Standby mode - White (flashing)

Energy Label Class: D

Dimensions

Packaging in mm (W x H x D):

930 x 525 x 188 mm

Product without stand (mm):

807 x 369 x 107 mm

Product with stand (max height):

807 x 602 x 287 mm

Specifications

Weight

Product with packaging (kg): 15.35 kg

Product with stand (kg): 10.401 kg

Product without stand (kg): 7.82 kg

Operating conditions

Altitude: Operation: +12,000 ft (3658 m), Non-operation: +40,000 ft (12,192 m)

Temperature range (operation): 0°C to 40 °C

Relative humidity: 20%-80 %

Temperature range (storage): -20°C to 60 °C

MTBF (demonstrated): 70,000 hrs (excluded backlight)

Sustainability

Environmental and energy: EPEAT*, Energy Star, RoHS

Post-consumer recycled plastic: 85%

Recyclable packaging material: 100 %

Specific Substances: Mercury free, PVC/BFR free housing

Compliance and standards

Regulatory Approvals: CB, CE Mark, ETL, CEC, TCO Certified, TCO Certified Edge, EAC, EAC ROHS, MEPS, UKCA, EMF, FCC, ICES-003, TUV/GS, TUV Ergo, eyesafe® CERTIFIED 2.0, TÜV Rheinland Low Blue Light (Hardware Solution)

Warranty: 5 years

Cabinet

Finish: Texture

Foot: Black

Front bezel: Black

Rear cover: Black

What's in the box?

Cables: HDMI cable, DisplayPort cable, USB-C to C/C cable, Power cable

Monitor with stand

User Documentation



* Radius of the arc of the display curvature in mm

* Response time value equal to SmartResponse

* NTSC Area based on CIE1976, sRGB Area based on CIE1931.

* Users are now able to switch sources easier than ever with the latest SmartKVM feature: Users can simply click the "ctrl" key three times, swap the main picture and/or sub picture on PIP and press the hotkey located on the bottom-right side of the monitor. Please note that the hotkey feature is only available for Windows and MacOS systems.

* For Video transmission via USB-C, your Notebook/device must support USB-C DP Alt mode

* Activities such as screen sharing and online streaming over the Internet can impact your network performance. Your hardware and network bandwidth will determine the overall audio and video quality.

* For USB-C power and charging function, your Notebook/device must support USB-C standard Power Delivery specifications. Please check with your Notebook user manual or manufacturer for more details.

* If your Ethernet connection seems slow, please enter the OSD menu and select USB 3.0 or a higher version that can support the LAN speed up to 1G.

* EPEAT rating is valid only where Philips registers the product. Please visit <https://www.epeat.net/> for registration status in your country.

* The 5 year warranty is a voluntary manufacturer's limited warranty. It applies only in the countries listed on this page <https://www.philips.co.uk/c-e/so/monitors/tco-certified-edge>. For consumers, it is provided in addition to, and without affecting, their legal rights under applicable national laws. For non-consumer (business/professional) end users, only the manufacturer's limited warranty terms apply.

* The monitor may look different from feature images.

* The products and accessories listed on this leaflet may differ by country and region.