

# PHILIPS

# EVNIA



DUAL MODE gaming  
monitor

Fast IPS Gaming monitor

Evnia 5000

27" (68.5 cm)

3840 x 2160 (4K UHD)

1920 x 1080 (Full HD)



27M2N5901A

## Your gaming experience to the utmost

Unlock next-level gaming with this Evnia monitor's Dual Mode. Seamlessly switch between 3840 x 2160 @ 160 Hz and 1920 x 1080 @ 320 Hz with a simple toggle for unmatched versatility and performance.

### Features designed for gamers' needs

- Connect your notebook with one USB-C cable
- Stark ShadowBoost: for enhancing visibility in dark scenes
- Evnia Precision Centre: Maximise Your Gaming Experience
- Smart Sniper: Improved control when you zoom in on targets
- AI-enhanced Ambiglow: for intensified entertainment
- Built-in stereo speakers for multimedia
- MultiView enables simultaneous dual connection and view
- Smart Crosshair: for better aim and more fun

### Built for fast action

- Dual Mode: The flexibility to match your gameplay
- 320 Hz refresh rates for silky-smooth and vivid images
- AMD FreeSync™ Premium; tear free, stutter free, fluid gaming
- 0.5 ms ultra-fast speed for crisp images and smooth gameplay

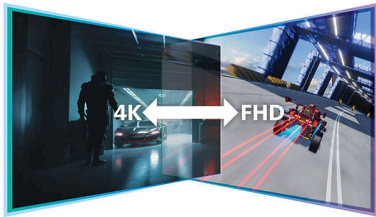
### Immersive visuals

# Fast IPS Gaming monitor

DUAL MODE gaming monitor

## Highlights

### Dual Mode



Experience the best of both worlds with Dual Mode. Seamlessly toggle between 3840 x 2160 @ 160 Hz for stunning clarity and 1920 x 1080 @ 320 Hz for ultra-smooth gameplay. Whether you crave breathtaking visuals or high-speed action, this monitor adapts to your needs in an instant.

### 320 Hz fast refresh



Experience the ultimate edge in intense, competitive gaming with the Philips Evnia monitor. Designed for gamers who demand ultra-smooth, lag-free visuals, this monitor delivers a 320 Hz refresh rate—way faster than standard displays. Say goodbye to frustrating frame drops that make enemies jump unpredictably on the screen. With this high-performance display, you'll see every critical movement in ultra-smooth motion, giving you the precision and clarity to stay ahead of the competition and take your shot with confidence.

### 0.5 ms Smart MBR fast response



The Philips Evnia with 0.5 ms Smart MBR effectively eliminates smearing and motion blur, and delivers sharper and more precise visuals to enhance your gaming experience. Fast-moving action and dramatic transitions will be rendered smoothly. It's the best choice for playing thrilling and twitch-sensitive games.

### UltraClear 4K UHD resolution



These Philips displays utilise high-performance panels to deliver UltraClear, 4K UHD (3840 x 2160) resolution images. Whether you are a demanding professional requiring extremely detailed images for CAD solutions, a user of 3D graphics applications or a financial wizard working on huge spreadsheets, Philips displays will make your images and graphics come alive.

### USB-C connection



This Philips display features a USB type-C connector with power delivery. With intelligent and flexible power management, you can power

27M2N5901A/00

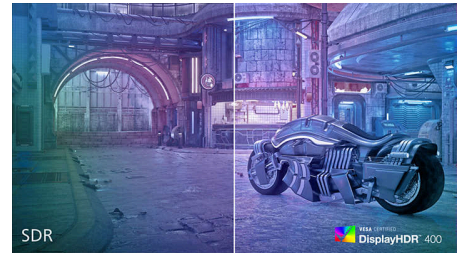
charge your compatible device directly. Its slim, reversible USB-C allows for easy, one-cable connection. You can watch high-resolution video and transfer data at super speed, while powering up and recharging your compatible device at the same time.

### AMD FreeSync™ Premium



Gaming shouldn't be a choice between choppy gameplay or broken frames. AMD FreeSync™ Premium equips serious gamers with a fluid, tear-free gameplay experience at peak performance. There are no compromises, game confidently with a high refresh rate, low framerate compensation and low latency.

### DisplayHDR 400



VESA-certified DisplayHDR 400 delivers a significant step up from normal SDR displays. Unlike other 'HDR-compatible' screens, true DisplayHDR 400 produces astonishing brightness, contrast and colours. With global dimming and minimum 400 nits of brightness, images come to life with notable highlights while featuring deeper, more nuanced blacks. It renders a fuller palette of rich new colours, delivering a visual experience that engages your senses.



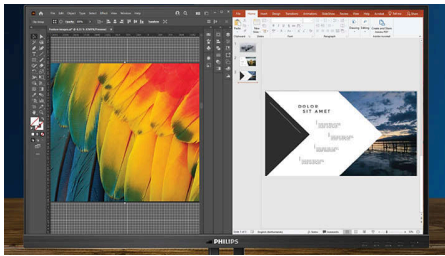
# Fast IPS Gaming monitor

DUAL MODE gaming monitor

27M2N5901A/00

## Highlights

### MultiView technology



With the ultra-high resolution Philips MultiView display, you can now experience a world of connectivity. MultiView enables active dual connect and view so that you can work with multiple devices like a PC and notebook simultaneously, for complex multitasking.

### Built-in stereo speakers



A pair of high-quality stereo speakers built into a display device. They may be visible front firing, or invisible down firing, top firing etc. depending on model and design.

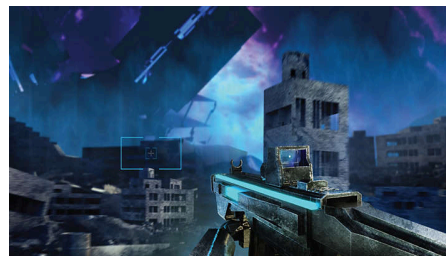
### AI-enhanced Ambiglow



Our AI-enhanced processor analyses the incoming image content and continuously adapts the colour and brightness of the emitted

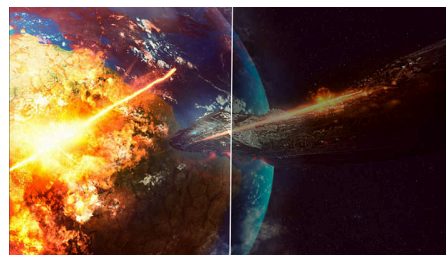
light to match the image. This feature adds a new dimension to your viewing experience. The innovative Ambiglow uses its AI capabilities to create a truly immersive and customisable gaming experience. From filling your gaming room with colour to feeling like you are part of the game, the AI-enhanced Ambiglow is made to make your gaming experience the best it's ever been by combining intelligence, colour and light.

### Smart Crosshair



Colour of Crosshair is set by default. When Smart Crosshair is on, the colour will change as a complementary colour to the background colour. Smart Crosshair enhances the aiming accuracy so you can spot the enemies more easily.

### Stark ShadowBoost



This feature enhances dark scenes without overexposing lightened areas. The Stark ShadowBoost feature has three selectable levels that offer texturised images with better colour saturation and higher contrast, so you can see better in both light and dark environments. In

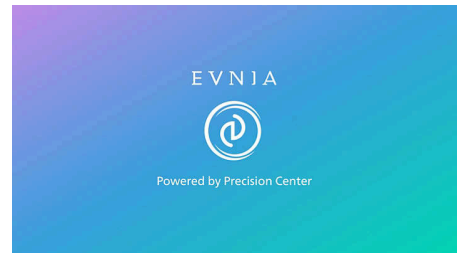
addition, this feature helps you fine-tune your sight so that enemies get exposed more quickly when gaming.

### Smart Sniper



Smart Sniper gives you better control over your scope for precise aiming. It overlays an additional window at either the top or centre of your screen, and enables you to select a zoom level up to 2 x your normal magnification.

### Evnia Precision Centre



Evnia Precision Centre is an easy-to-use software designed to optimise and personalise your Evnia monitor. Whether you're a casual or competitive gamer, it offers a wide range of customisation options to match your unique gaming style. With intuitive controls and seamless navigation, Evnia Precision Centre gives you full control, providing everything you need to elevate your gaming to the next level — right at your fingertips.



Flicker-free

# Fast IPS Gaming monitor

DUAL MODE gaming monitor

27M2N5901A/00

## Specifications

### Picture/Display

Panel Size: 27 inch/68.5 cm

Aspect ratio: 16:9

LCD panel type: Fast IPS

Backlight type: W-LED system

Pixel pitch: 0.1554 x 0.1554 mm

Brightness: 350 (SDR) cd/m<sup>2</sup>, 450 (HDR On) cd/m<sup>2</sup>

Brightness uniformity: 93-105%

Display colours: 1.07B (8 bits+FRC),

(8 bits @ UHD 160 Hz/FHD 320 Hz;

10 bits @ UHD120 Hz/FHD 240 Hz)

Colour gamut (typical): Adobe RGB 90%; DCI-P3:95%, sRGB: 130%, NTSC 110% \*

Contrast ratio (typical): 1000:1

SmartContrast: Mega Infinity DCR

Response time (typical): 1 ms (Grey to Grey)\*

Viewing angle: 178° (H)/178° (V), @ C/R > 10

Picture enhancement: SmartImage game

Maximum resolution: 3840 x 2160 @ 160 Hz

(HDMI/DP), 1920 x 1080@320 Hz (HDMI/DP)

Effective viewing area:

596.763(H) x 335.664(V) mm

Scanning Frequency: UHD: 30 - 360 kHz (H)/46 -

160 Hz (V); FHD: 30 - 360 kHz (H)/48 - 3200 Hz

(V)

sRGB

Delta E: <2 (sRGB)

Flicker-free

Pixel Density: 163 PPI

LowBlue Mode

Display Screen Coating: Anti-Glare, 3H, Haze

25%

Low Input Lag

EasyRead

AMD FreeSync™ technology

HDR: DisplayHDR 400 certified

Smart Sniper

Shadow Boost

Smart MBR Sync

Stark Shadow Boost

Smart MBR: 0.5 ms\*

Smart Crosshair

SoftBlue technology

### Connectivity

Signal Input: HDMI 2.1 x 2, DisplayPort 1.4 x 1, USB-C x 1 (video, data and PD)

Sync Input: Separate Sync

Audio (In/Out): Headphone out

HDCP: HDCP 1.4 (HDMI/DP/USB-C), HDCP 2.2

(USB-C), HDCP 2.3 (HDMI/DP)

USB Hub: USB3.2, Gen1, 5G, upstream: USB-B x 1, downstream: USB-A x 2 (with x 1 FC)

### Power Delivery

Max power delivery: Up to 65 W (5 V/3 A, 7 V/3 A, 9 V/3 A, 10 V/3 A, 12 V/3 A, 15 V/3 A, 20 V/3.25 A)

Version: USB PD version 3.0

### Convenience

Built-in Speakers: 5 W x 2

Plug and Play Compatibility: DDC/CI, Mac OS, sRGB, Windows 11/10

User convenience: Power On/Off, Menu/OK, Input/Up, Dual Resolution/Down, SmartImage game/Back

OSD Languages: Brazil Portuguese, Czech, Dutch, English, Finnish, French, German, Greek, Hungarian, Italian, Japanese, Korean, Polish, Portuguese, Russian, Spanish, Simplified Chinese, Swedish, Turkish, Traditional Chinese, Ukrainian

Other convenience: Kensington lock, VESA

mount (100 x 100 mm), LowBlue Mode

Control software: Evnia Precision Centre

MultiView: 2 x devices, PIP/PBP mode

KVM

Ambiglow: Ambiglow 3-sided

### Stand

Height adjustment: 130 mm

Pivot: +/- 90 degree

Swivel: +/- 30 degree

Tilt: -5/20 degree

### Power

Power supply: Internal, 100-240 VAC, 50/60 Hz

Off mode: 0.3 W (typ.)

On mode: 32.5 W (typ.)

Standby mode: 0.5 W (typ.)

Power LED indicator: Operation - White, Standby mode - White (flashing)

Energy Label Class: F

### Dimensions

Packaging in mm (W x H x D):

840 x 478 x 188 mm

Product without stand (mm): 614 x 368 x 75 mm

Product with stand (max height):

614 x 526 x 262 mm

### Weight

Product with packaging (kg): 10.04 kg

Product with stand (kg): 6.58 kg

Product without stand (kg): 5.17 kg

### Operating conditions

Altitude: Operation: +12,000 ft (3658 m), Non-operation: +40,000 ft (12,192 m)

Temperature range (operation): 0°C to 40 °C

MTBF: 50,000 (Excluded backlight) hour(s)

Relative humidity: 20%-80 %

Temperature range (storage): -20°C to 60 °C

### Sustainability

Environmental and energy: RoHS

Recyclable packaging material: 100 %

Specific Substances: PVC/BFR free housing

Post-consumer recycled plastics: 85%\*

### Compliance and standards

Regulatory Approvals: CB, CE Mark,

TUV/ISO9241-307, TUV-BAUART, EAC, EAC

ROHS, MEPS, UKCA, EMF, FCC, ICES-003

### Cabinet

Colour: White

Finish: Texture

### What's in the box?

Cables: Display port cable, HDMI cable, USB-C cable, Power cable

Monitor with stand

User Documentation



\* "IPS" word mark / trademark and related patents on technologies belong to their respective owners.

\* For best output performance, please always ensure that your graphic card is capable of achieving the maximum resolution and refresh rate of this Philips display.

\* Response time value equal to SmartResponse

\* Smart MBR adjusts brightness for blur reduction, so you cannot adjust brightness while Smart MBR is turned on. To reduce motion blur, the LED backlight will strobe synchronously with each screen refresh, which may cause a noticeable change in brightness.

\* Smart MBR is a gaming-optimised mode. Turning on Smart MBR may cause noticeable screen flickering. We recommend turning it off when you are not using the gaming function

\* This monitor strives for sustainability: the stand's feet and headphone holder are made with 35% recycled plastic and monitor's chassis is made up of 85% post-consumer recycled plastic.

\* Adobe RGB and DCI-P3 Coverage based on CIE1976, sRGB Area based on CIE1931, NTSC Area based on CIE1976.

\* The monitor may look different from feature images.

\* The products and accessories listed on this leaflet may differ by country and region.