

PHILIPS

EVNIA



Quad HD gaming
monitor

Fast IPS Gaming
monitor

Evnia 3000

27" (68.5cm)

2560 x 1440 (Quad HD)



27M2N3500UK

Broaden your gaming horizon

This 27" Fast IPS monitor offers sharp visuals with a 300Hz refresh rate and 0.3ms Smart MBR. Enjoy smooth gameplay and reduced eye strain with Circular Polarization Technology for a high-quality, comfortable gaming experience.

Features designed for gamers needs

- Stark ShadowBoost: for enhancing visibility in dark scenes
- Circular Polarization Technology: for better eye health
- Smart Sniper: for zooming in on targets
- Evnia Precision Center: Maximize Your Gaming Experience
- Smart MBR: for reducing motion blur.
- LowBlue mode and Flicker-free easy-on-the eyes viewing
- Smart Crosshair: for better aim and more fun

Built for fast action

- 0.3 ms ultra-fast speed for crisp image and smooth gameplay
- 300Hz trail-blazing refresh rate for smoothest gameplay
- Low input lag reduces time delay between devices to monitor

Immersive visuals

- 1.07 billion colors for stunning color and finest gradations

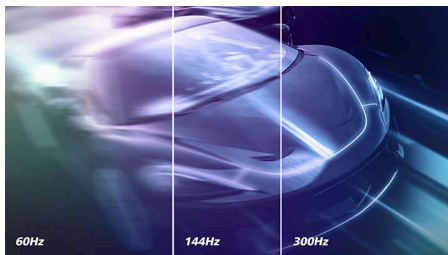
Fast IPS Gaming monitor

Quad HD gaming monitor

27M2N3500UK/96

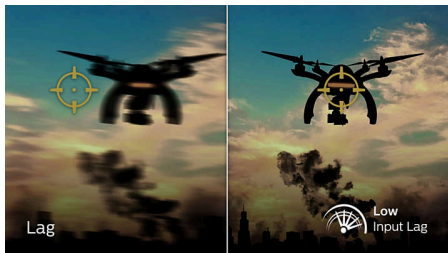
Highlights

Accelerated 300Hz refresh rate



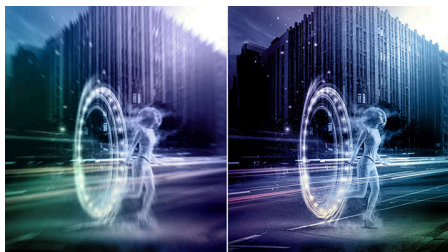
Philips 300Hz display takes your gaming experience to new dimensions. The low input lag coupled with variable refresh rate technology gives you an Immersive gaming advantage. Plus, our wide view angle panel with high resolution provides a realistic gaming experience with unsurpassed color accuracy. Focus on what matters as adjustable stand gives the comfort you deserve and flicker-free gives an easy viewing, so you continue gaming without health worries.

Low input lag



Input lag is the amount of time that elapses between performing an action with connected devices and seeing the result on screen. Low input lag reduces the time delay between entering a command from your devices to monitor, greatly improve on playing twitch-sensitive video games, particularly important to whom plays fast-paced, competitive games.

0.3 ms Smart MBR fast response



Philips display with 0.3 ms Smart MBR effectively eliminates smearing and motion blur, delivers sharper and precise visuals to enhance gaming

experience. Fast-moving action and dramatic transitions will be rendered smoothly. Best choice for playing thrilling and twitch-sensitive games.

1.07 billion colors



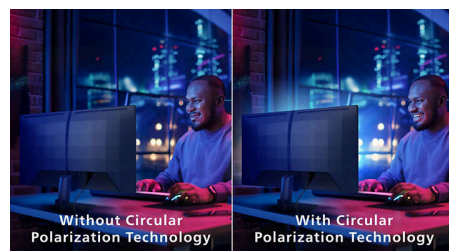
This display delivers outstanding color depth with 1.07 billion colors, and the finest gradation, for re-creating smooth, precise, and vivid image. Enjoy accurate and true-to-life visuals whether gaming, watching videos, or working on color critical work with graphics applications.

LowBlue mode & Flicker-free



Our LowBlue Mode and Flicker-free technology have been developed to reduce eye strain and fatigue often caused by long hours in front of a monitor.

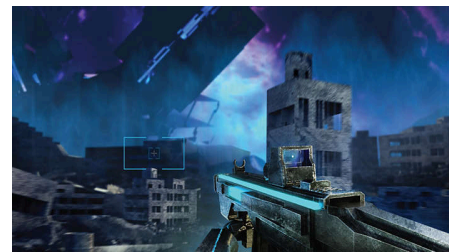
Circular Polarization Technology



Circular Polarization uses natural light simulation to filter harmful blue light more effectively, reducing eye strain and fatigue. Unlike traditional screens, it activates more of the eye's natural defenses, offering a smoother, healthier viewing experience. For gamers, this means longer, more immersive play with less

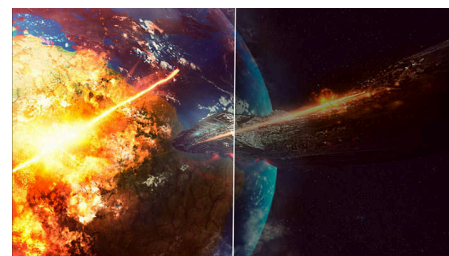
discomfort, with faster focus recovery, and reduced eye fatigue—ideal for intense sessions and peak performance.

Smart Crosshair



Color of Crosshair is set by default. When Smart Crosshair is on, the color will change as complementary color to the background color. Smart Crosshair enhances the accuracy of aiming so you can spot the enemies more easily.

Stark ShadowBoost



This feature enhances dark scenes without overexposing lightened areas. The Stark Shadowboost feature has three selectable levels that offer texturized images with better color saturation with higher contrast so you can see better in both light and dark environments. In addition, this feature helps you fine-tune your sight so that enemies get exposed more quickly when gaming.



Fast IPS Gaming monitor

Quad HD gaming monitor

27M2N3500UK/96

Highlights

Smart MBR



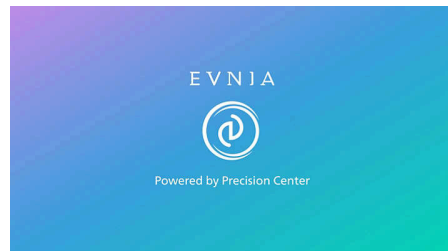
In an effort to reduce motion blur, this monitor's LED backlight will work simultaneously with the refresh rate to control brightness levels for the best picture clarity. Please note that Smart MBR is a type of gaming mode and it is recommended to turn the function off when not gaming as it may cause screen-flickering.

Smart Sniper



This feature enables you to zoom in to multiple targets at once; ultimately making it easier to aim and hit your enemies.

Evnia Precision Center



Evnia Precision Center is an easy-to-use software designed to optimize and personalize your Evnia monitor. Whether you're a casual or competitive gamer, it offers a wide range of customization options to match your unique gaming style. With intuitive controls and seamless navigation, Evnia Precision Center gives you full control, providing everything you need to elevate your gaming to the next level—right at your fingertips.



Fast IPS Gaming monitor

Quad HD gaming monitor

27M2N3500UK/96

Specifications

Picture/Display

Panel Size: 27 inch / 68.5 cm

Aspect ratio: 16:9

LCD panel type: IPS technology

Backlight type: W-LED system

Pixel pitch: 0.2331 x 0.2331 mm

Brightness: 350 (HDR Off) cd/m², 450 (HDR On) cd/m²

Display colors: 1.07B (8bits+FRC), (8bits @ QHD 300Hz; 10bits @ QHD 260Hz)

Color gamut (typical): Adobe RGB 93.8%; DCI-P3:96.7%, sRGB: 129.35%, NTSC 108.13%*

Contrast ratio (typical): 1000:1

SmartContrast: Mega Infinity DCR

Viewing angle: 178° (H) / 178° (V), @ C/R > 10

Picture enhancement: SmartImage game

SmartResponse: 1 ms (Gray to Gray)*

Maximum resolution: 2560x1440 @ 300 Hz (DP, 8bits), 2560x1440 @ 300Hz (HDMI, 8bits)*

Effective viewing area: 596.736(H) x 335.664(V) mm

Scanning Frequency: 30KHz~470KHz(H) / 48-300Hz(V)

sRGB

Delta E: <2 (sRGB)

Flicker-free

Pixel Density: 108.79 PPI

LowBlue Mode

Display Screen Coating: Anti-Glare, 3H, Haze 25%

SmartUniformity: 93~105%

Low Input Lag

EasyRead

Adaptive sync

HDR: HDR 400 supported

Smart Sniper

Smart MBR Sync

Stark Shadow Boost

Smart MBR: 0.3ms*

Smart Crosshair

Shadow Boost

Connectivity

Signal Input: HDMI 2.1 x 1, DisplayPort 1.4 x 1

Sync Input: Separate Sync

Audio (In/Out): Headphone out

HDCP: HDCP 1.4 (HDMI / DP), HDCP 2.3 (HDMI / DP)

Convenience

Plug & Play Compatibility: DDC/CI, Mac OS, sRGB, Windows 11 / 10

User convenience: Power On/Off, Menu/OK, Input/Up, Game Settings/Down, SmartImage game/Back

OSD Languages: Brazil Portuguese, Czech, Dutch, English, Finnish, French, German, Greek, Hungarian, Italian, Japanese, Korean, Polish, Portuguese, Russian, Spanish, Simplified Chinese, Swedish, Turkish, Traditional Chinese, Ukrainian

Other convenience: Kensington lock, VESA mount (100x100mm), LowBlue Mode

Low blue light

Stand

Tilt: -5/20 degree

Power

Power supply: Internal, 100-240VAC, 50-60Hz

Off mode: 0.3 W (typ.)

On mode: 31.13 W (typ.)

Standby mode: 0.5 W (typ.)

Power LED indicator: Operation - White, Standby mode- White (blinking)

Dimensions

Packaging in mm (WxHxD): 690 x 420 x 141 mm

Product without stand (mm): 614 x 368 x 60 mm

Product with stand(max height): 614 x 463 x 216 mm

Weight

Product with packaging (kg): 7.00 kg

Product with stand (kg): 4.28 kg

Product without stand (kg): 3.73 kg

Operating conditions

Altitude: Operation: +12,000ft (3,658m), Non-operation: +40,000ft (12,192m)

Temperature range (operation): 0°C to 40 °C

MTBF: 50,000 (Excluded backlight) hour(s)

Relative humidity: 20%-80 %

Temperature range (storage): -20°C to 60 °C

Sustainability

Environmental and energy: RoHS

Recyclable packaging material: 100 %

Post consumer recycled plastics: 85%*

Compliance and standards

Regulatory Approvals: CB, CE Mark, CEL, CCC, CECP, UKCA, EMF, FCC, ICES-003

Cabinet

Color: Charcoal

Finish: Textured



* For best output performance, please always ensure that your graphic card is capable of achieving the maximum resolution and refresh rate of this Philips display.

* Response time value equal to SmartResponse

* Adobe RGB and DCI-P3 Coverage based on CIE1976, sRGB Area based on CIE1931, NTSC Area based on CIE1976.

* Display colors: 10bits can be reached @260Hz with QHD resolution.

* Smart MBR is to adjust brightness for blur reduction, so cannot adjust brightness while Smart MBR is turned on. To reduce motion blur, LED backlight will strobe synchronously with screen refresh, which may cause noticeable brightness change

* Smart MBR is gaming-optimized mode. Turn on Smart MBR may cause noticeable screen flickering. It is recommended to turn off when you are not using the gaming function

* This monitor strives for sustainability: the monitor's chassis is made up of 85% post-consumer recycled plastic.

* The monitor may look different from feature images.

* The products and accessories listed on this leaflet may differ by country and region.