

# PHILIPS



## Series 7000

### Body Groomer

Triple protect shave system

2D Flexing head

Skin-friendly trimmer blades

Close results on skin



BG7470/15

## Skin-friendly body and intimate grooming

### 2D flexing head and dual-head trim and shave system

The unique dual-head system allows you to effortlessly switch between shaving and trimming, without compromising on skin comfort. With 2D flexing head technology, the shaver adapts to your body's curves, catching even the most stubborn hairs.

#### Close results on skin

- Smooth, close shaving to 0.2 mm in length

#### Versatile styling across the body

- Dual-head system for a close shave or styled trim
- Adapts the shaver head to your body's contours
- Shape your style with an even, precise trim
- Craft your look with different lengths

#### Skin-friendly, comfortable body grooming

- Patented cutting technology to be gentle on skin
- An efficient, comfortable trim every time
- Uniquely designed comb for a gentle trim in sensitive areas

#### Built to last and easy to use

- Integrated optilight for enhanced guidance
- 100% showerproof for convenient grooming, wet or dry
- Consistent powerful performance from start to finish

## Highlights

### Dual head trim and shave system



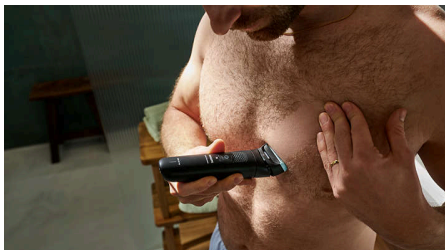
The innovative dual-head system offers you a smooth, close shave that leaves your skin feeling soft and refreshed or a precise trimmed look that perfectly complements your unique style. This groomer has the versatility you need.

### Triple Protect shave system



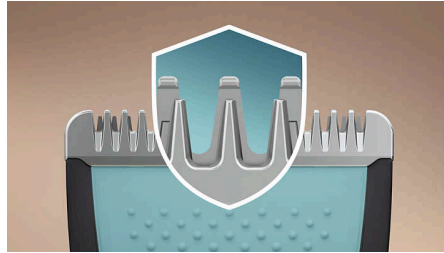
The Triple Protect shave system has pearl tips for enhanced skin comfort, diamond-shaped holes for effortless skin doming while the guard significantly minimises skin irritation.

### 2D flexing head



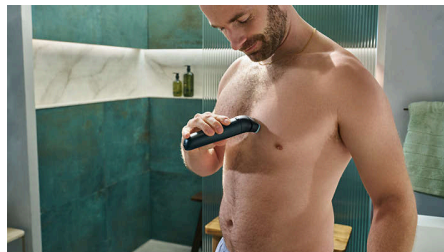
With contour following technology, the 2D Flexing head adapts the shaver head to follow the contours of your body areas. Catching even the difficult hairs.

### Trimmer with rounded tips



Our uniquely engineered blade technology with rounded tips is specifically crafted to be gentle on the skin, providing a more comfortable trimming experience.

### Close results on skin



Shaving to 0.2 mm, our cutting technology gives you the close and precise grooming experience you need. Featuring our diamond-shaped shaver foil that works seamlessly to ensure a smooth, even finish, leaving your skin feeling soft and refreshed.

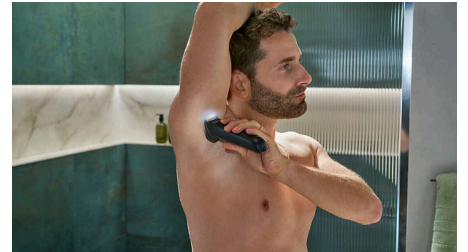
### Optilight functionality



The built-in optilight provides valuable guidance, helping you target and remove every hair, including the stubborn ones in hard-to-see areas

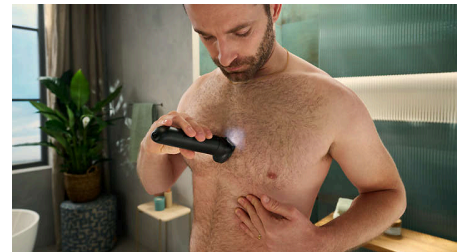
or low-light situations. Better visibility gives you a precise and thorough shave for an enhanced grooming experience.

### Adjustable precision comb



The precision comb, with length settings in 0.5 mm steps from 1 to 3 mm, helps you achieve your ideal look by giving you an even trim at your desired length.

### Adjustable comb (3-7 mm)



The adjustable comb with 3 to 7 mm length settings gives you the control to craft your style at the ideal length you desire.

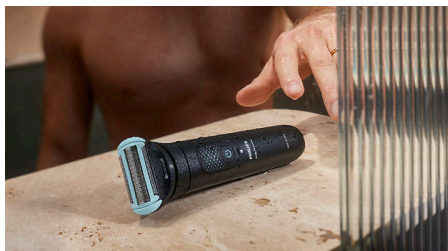
### Intimate Comb



The intimate comb has been uniquely designed to guard the skin of your sensitive areas from the blade as you trim, delivering extra gentleness.

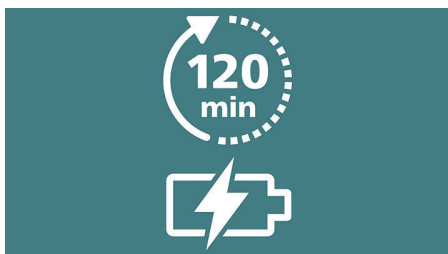
## Highlights

### 100% showerproof



Being 100% showerproof, you can use the body groomer both wet and dry for a comfortable, convenient experience, every time. Plus it's easy to clean too.

### Up to 120 minutes runtime



Our durable lithium battery delivers up to 120 minutes of runtime with 5 minute quick charge option\*, for a powerful, continual trimming experience.

### Travel pouch



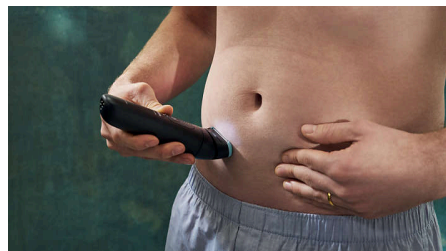
Keep all your attachments in the travel pouch with a zip for easy organisation and travel.

### Battery life indicator



The battery indicator keeps you fully informed of your battery status, whether it's low, empty, fully charged or still charging, ensuring that you're always ready for your next grooming session.

### Ergonomic grip



Our ergonomic grip makes the device easy to hold and manoeuvre, providing you with the comfort and control you need to perfect your look.



## Specifications

### Accessories

**Convenience:** Cleaning brush, USB-A (no adapter included)

**Travel and storage:** Zipped soft fabric pouch, Travel lock

### Power

**Charging:** 1 hour, 5-min quick charge

**Battery type:** Lithium

**Run time:** 120 minutes

**Battery status:** Low battery indicator

**Usage:** Cordless

### Design

**Handle:** Ergonomic grip

**Finishing:** Deep black

### Service

**Warranty:** Up to 5 years\*\*

### Ease of use

**Maintenance-free:** No blade oil required

**Reach:** Optilight

**Water resistance:** Wet & Dry

### Summary

**Body area:** Body

**Solution:** Trim and Shave

### Styling tools

**Trimming blade:** Skin-friendly blades

### Styling tools

**Shaving system:** Triple Protect shave system, 2D flexing head

### Combs

**Precision guard:** 1-3 mm fine 0.5 mm control

**Adjustable:** 3-7 mm

**Intimate:** 1 mm

