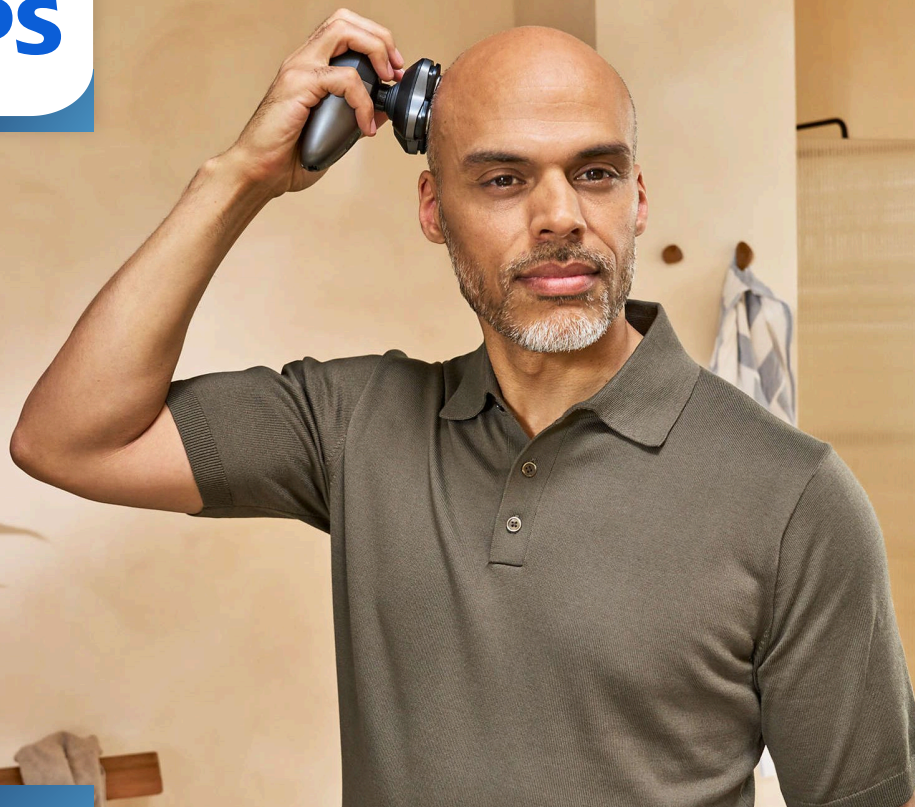


# PHILIPS



Advanced Shaver  
with 90 min runtime

Head Shaver Pro 7000 Series

360° Flexing Head

ComfortCut Blades

PowerAdapt Sensor

Ergonomic Design



HS7980/15

## Clean shave, gentle on skin

From the World's No. 1 Electric Shaving Brand\*

The Philips Head Shaver Pro 7000 Series is designed for a close shave and is gentle on skin. The advanced 360° Flexing head adapts to the shape of your head, while the ComfortCut blades ensure a close, even cut in any direction.

### Close Shave

- From the World's No. 1 Electric Shaving Brand\*
- Cut hair in any direction with 360 degree flexing head

### Gentle on Skin

- Smooth and Gentle Shave with ComfortCut Blades
- Smart PowerAdapt Sensor for Effortless Shaving

### Comfortable Use

- Designed for Comfort with an Ergonomic Grip
- Hair Collect System keeps your shave clean
- Fully washable and showerproof
- Travel lock to ensure safe storage and travel
- Convenient Premium Storage Pouch for Everyday Use

### Fast and Easy Use

- 90 minutes of cordless shaving after a full charge
- 5 minute Quick Charge for 1 full shave

# Head Shaver Pro 7000 Series

Advanced Shaver with 90 min runtime

HS7980/15

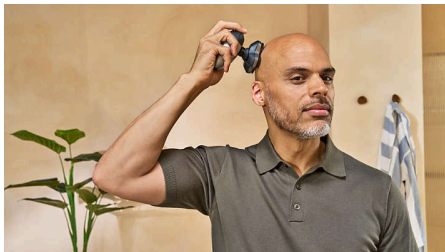
## Highlights

### From the #1 shaving brand



The Philips Head Shaver Pro 7000 Series is designed for a close shave that's also comfortable on the skin. This is the perfect tool for those who want to look sharp, feel confident and express themselves fully.

### 360° Flexing Head



Fully flexible unit turns 360° to follow head contours for optimal skin contact even in difficult areas, avoiding excessive pressure peaks that may cause discomfort and irritation.

### ComfortCut Blades



Get a clean, comfortable shave with this Philips shaver. This electric shaver's 36 ComfortCut blades cut each hair right above skin level to give you a smooth and even finish.

### Ergonomic Design



Confidently handle your shaver with the ergonomic design that helps you keep a secure grip as you shave.

### PowerAdapt Sensor



Dynamic PowerAdapt Sensor reads hair density 125 times per second. Dynamically adapts shaving power for effortless shaving.

### Hair Collect System



Keeps your shave clean without leaving cut hairs around the sink.

### Showerproof



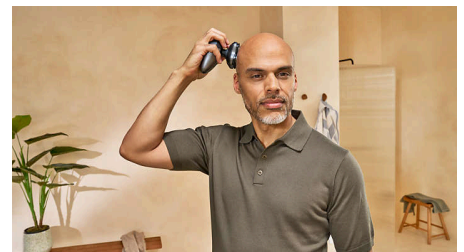
Choose a shaving routine that suits you. With Wet and Dry, you can opt for a comfortable dry shave or a refreshing wet shave. You can shave with gel or foam, even in the shower.

### 90 Minute Runtime



Use your shaver at home or on-the-go for up to 90 minutes on a 1 hour charge - that's around 15 shaves. The shaver only operates when not charging.

### 5 minute Quick Charge



In a hurry? Plug in your shaver for 5 minutes and get enough power for 1 full shave.

# Head Shaver Pro 7000 Series

Advanced Shaver with 90 min runtime

HS7980/15

## Highlights

### Travel Lock



Prevent accidental activation while travelling. The travel lock feature ensures that your shaver stays off when packed in your bag.

### Premium Travel Pouch



Keep your shaver and accessories organised and protected with a convenient premium storage pouch, ideal for home or travel.

### Rinsing Station



Effortlessly maintain your shaver with the included rinsing station, which ensures optimal hygiene and performance by thoroughly cleaning your shaving heads.

### 2+3 Years Warranty



Our shavers are designed with optimum performance in mind. They come with a 5 year guarantee\*\*, so you can enjoy ultimate reliability and performance, shave after shave.

# Head Shaver Pro 7000 Series

Advanced Shaver with 90 min runtime

HS7980/15

## Specifications

### Accessories

**Convenience:** Cleaning brush, USB-A (no adapter included), Hair collection system, Rinsing station  
**Travel and storage:** Premium travel pouch, Travel lock, Protective cap

### Power

**Charging:** 1 hour, 5-min quick charge  
**Battery type:** Lithium  
**Run time:** 90 minutes  
**Battery status:** Charging indicator, Low battery indicator

### Design

**Handle:** Ergonomic grip  
**Finishing:** Metallic black

### Service

**Warranty:** Up to 5 years  
**Replacement parts:** Replace heads every 6 months with HS740

### Ease of use

**Water resistance:** Wet & Dry

### Consumer Trade Item

**Height:** 23 cm  
**Width:** 13 cm  
**Length:** 8.5 cm  
**Net weight:** 0.4425 kg  
**Gross weight:** 0.6005 kg  
**GTIN:** 8720689044257  
**Country of origin:** CN  
**Harmonized system code:** 85101000

### Outer Carton

**Height:** 24.3 cm  
**Width:** 13.9 cm  
**Length:** 17.8 cm  
**Net weight:** 0.885 kg  
**Gross weight:** 1.316 kg  
**GTIN:** 18720689044254

### Pallet Layer

**Height:** 24.3 cm  
**Width:** 80 cm  
**Length:** 120 cm

### Pallet

**Height:** 97.2 cm  
**Width:** 80 cm  
**Length:** 120 cm  
**Net weight:** 123.9 kg  
**Gross weight:** 186.868 kg  
**GTIN:** 68720689044259

### Summary

**Body area:** Head  
**Technologies:** PowerAdapt Sensor

### Styling tools

**Trimming blade:** Self-sharpening full metal, ComfortCut Blades, Anti-corrosion system, Surgical-grade Swedish steel

### Styling tools

**Shaving system:** 360° Flexing Head



\* Source Euromonitor International Limited; retail volume, per body shavers category definition, 2024 data, research conducted in October 2024.  
\* \*2 year warranty + 3 year extension upon registration on Philips.com within 90 days of purchase