

PHILIPS



Cordless shaver, Wet
& Dry

Lady Shaver Series 6000

Wet and Dry use

For legs, body and bikini

+4 accessories

Up to 80 min runtime



BRL138/00

Gentle, clean shave. Even on sensitive areas.

Shave gently. Care deeply. Self-care isn't selfish.

Discover gentle, quick and comfortable shaving. Shaves hair down to 0.2 mm. Because life's too busy for complicated shaving routines – enjoy effortless shaving that fits your schedule and gives you skin comfort. Dermatologically tested.

Goodbye, skin irritation. Hello, smooth skin.*

- Less burning, less redness, more skin comfort.**
- Dermatologically tested on sensitive skin.

Effortless. Fast and Easy.

- Fast and easy. Cable-free. Up to 80 min of runtime.
- Wet for the shower. Dry for on the go.
- Shave, trim and shape the bikini area with bikini trimming head.
- Plastic parts made with >55% recycled plastics.

Gentle and clean shave.

- Removes hair as short as 0.2 mm for a gentle, clean shave.

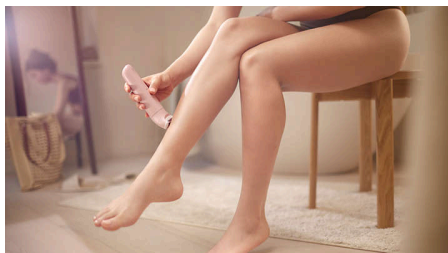
Lady Shaver Series 6000

Cordless shaver, Wet & Dry

BRL138/00

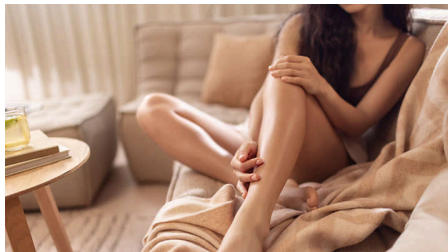
Highlights

Gentle and clean shave



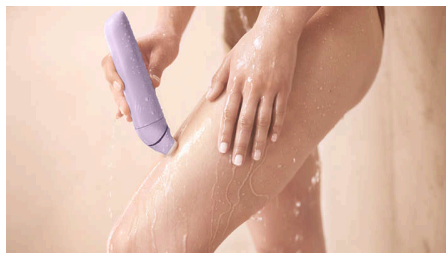
3 blade system for a smooth, gentle shave – prevents nicks and cuts. Consists of dual-sided trimmer tips that pre-trim all hair. Shaving foil with diamond-shaped openings are designed to shave pre-trimmed hair in one go.

Goodbye, skin irritation*



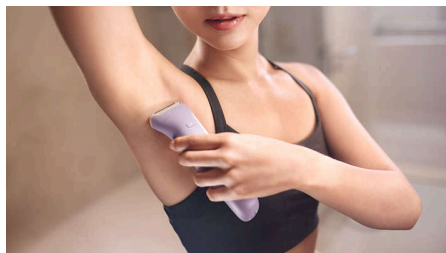
Say goodbye to razor burns and redness - 80% of women experienced smooth, irritation-free skin after use.** Dermatologically tested on sensitive skin.

Wet and Dry



Seamlessly fits into your routine - whether you're in the shower or on the move. Wet or dry, the choice is yours.

Effortless. Fast and easy



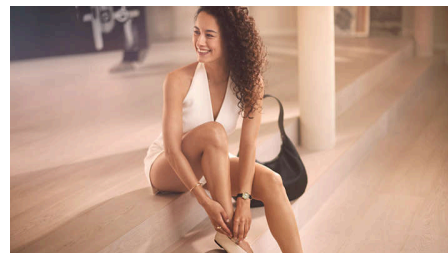
Built for the way hair grows. Shave both ways: up. Down. Done. No cable holding you back – effortlessly reach every spot, from underarms to legs and toes. Stay powered for up to 80 mins on one charge. No interruptions.

Trim and Shape



Personalise your bikini routine - trim and shape with confidence, thanks to the included bikini trimming head and bikini comb.

Dermatologically tested



Where technology meets care - for skin that feels as good as it looks. Designed for gentleness, tailored for care - because you deserve an experience that's more than ordinary.

One-time buy that lasts years



Plastic parts made with >55% recycled plastics, paper-based packaging and no adapter in the box. A one-time purchase that lasts for years.*** One shaving foil, a whole year of effortless shaving.

Lady Shaver Series 6000

Cordless shaver, Wet & Dry

BRL138/00

Specifications

Accessories

Pouch
Bikini trimmer head
Bikini trimmer comb
Trimming Comb

Power

Battery type: LiFePO4
Charging time: 8 hour(s)
Battery run time: Up to 80 mins

Technical specifications

Voltage: 5V/7.5 W
USB-A cable
Power adapter: No

Features

1 speed setting

Service

2 year warranty

Ease of use

Wet & Dry
Cordless
Charging: USB-A Charging (5 V⁻ / ≥1 A)

Performance

3-Blade system
Dermatologically tested
Rounded trimmer tips

Design

Anti-slip grip

