

# PHILIPS



Cordless shaver, Wet  
& Dry

Lady Shaver Series 8000

LED light, Flexible head

For legs, body and bikini

+5 accessories

Up to 100 min runtime



BRL149/00

## Close shave. Even on hard-to-reach areas.

Shave gently. Care deeply. Self-care isn't selfish.

Our most premium Lady Shaver with a flexible head and LED light. You deserve an experience that's anything but ordinary. This special full-body edition offers hair removal solutions for face, body and bikini area. Dermatologically tested.

### Goodbye, skin irritation. Hello, smooth skin.\*

- Less burning, less redness, more skin comfort.\*\*
- Dermatologically tested on sensitive skin.

### Effortless. Fast and Easy.

- Wet for the shower. Dry for on the go.
- Fast and easy. Cord-free. Up to 100 min runtime.
- Prep and protect – exfoliate to remove dead skin.
- Shave, trim and shape the bikini area with bikini trimming head.
- Plastic parts made with >55% recycled plastics.

### Close shave. Even on hard-to-reach areas.

- Removes hair as short as 0.2 mm for a gentle, clean shave.
- Flexible head glides seamlessly along your curves.

### Lighting the way to smoother skin.

- LED light. Spot it. Shave it.

# Lady Shaver Series 8000

Cordless shaver, Wet & Dry

BRL149/00

## Highlights

### Gentle and clean shave



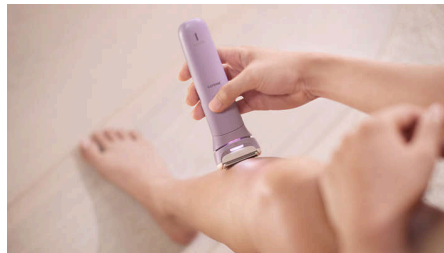
3-blade system with a flexible head for a gentle, clean shave - prevents nicks and cuts. Consists of dual-sided trimmer tips that pre-trim all hair. Shaving foil with diamond shaped openings are designed to shave pre-trimmed hair in one go.

### Flexible head for body contours



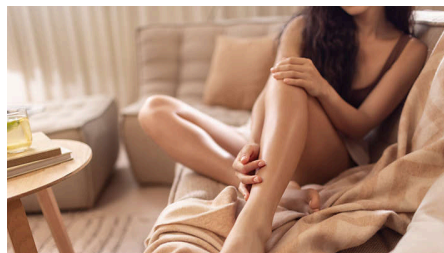
Introducing our first Philips Lady Shaver with a flexible shaving head, designed for your curves.\*\*\* The flexible head glides seamlessly along your curves for a close, precise shave. Hard-to-reach spots? No problem. It moves with your body contours and a LED light helps to spot every hair. Personalise your shaving with the two speed settings for more control over the speed and intensity of your hair removal.

### LED light. Spot it. Shave it.



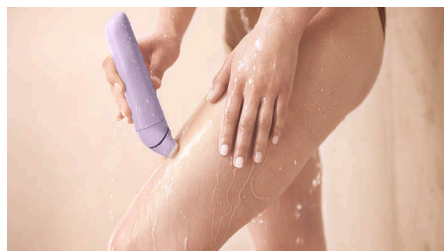
Because your skin deserves spotlight treatment. New Lady Shaver with built-in LED light catches every hair.

### Goodbye, skin irritation\*



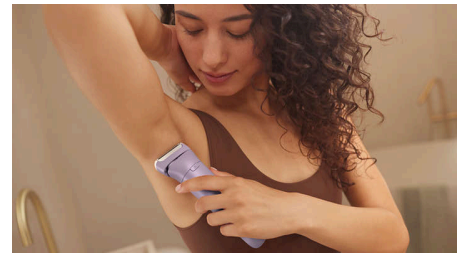
Say goodbye to razor burns and redness - 80% of women experienced smooth, irritation-free skin after use.\*\* Dermatologically tested on sensitive skin.

### Wet and Dry



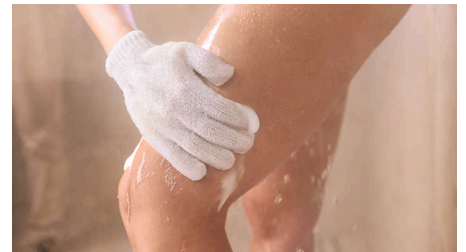
Seamlessly fits into your routine - whether you're in the shower or on the move. Wet or dry, the choice is yours.

### Effortless. Fast and easy



Built for the way hair grows. Shave both ways: Up. Down. Done. No cord holding you back - effortlessly reach every spot, from underarms, to legs, to toes. Stay powered for up to 100 mins on one charge. No interruptions.

### Fully body solution



We've thought of everything, so you don't have to. Step 1: Exfoliate to remove dead skin and help to prevent ingrown hairs. Step 2: Pre-trim longer hairs and shave. Step 3: Use the bikini trimmer head for touch-ups down there.

## Lady Shaver Series 8000

Cordless shaver, Wet & Dry

BRL149/00

# Highlights

### Trim and Shape



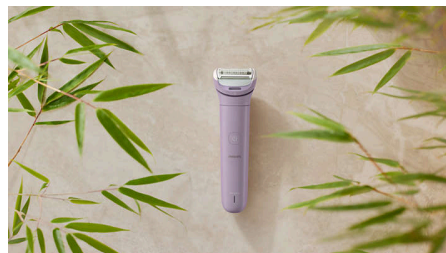
Personalise your bikini routine - trim and shape with confidence, thanks to the included bikini trimming head and bikini comb.

### Dermatologically tested



Where technology meets care - for skin that feels as good as it looks. Designed for gentleness, tailored for care - because you deserve an experience that's more than ordinary.

### One-time buy that lasts years



Plastic parts made with >55% recycled plastics, paper-based packaging and no adapter in the box. A one-time purchase that lasts for years.\*\*\*\* One shaving foil, a whole year of effortless shaving.

# Lady Shaver Series 8000

Cordless shaver, Wet & Dry

BRL149/00

## Specifications

### Accessories

Pouch  
Bikini trimmer head  
Bikini trimmer comb  
Trimming Comb  
Exfoliation glove

### Power

Battery type: Li-Ion  
Charging time: 1 hour(s)  
Battery run time: Up to 100 min

### Technical specifications

Voltage: 5V/7.5 W  
USB-A cable  
Power adapter: No

### Features

Speed settings: 2 settings  
Integrated LED light

### Service

2 year warranty

### Ease of use

Wet & Dry  
Cordless  
Charging: USB-A Charging (5 V<sup>-</sup> / ≥1 A)

### Performance

Flexible head  
3-Blade system  
Dermatologically tested  
Rounded trimmer tips

### Design

Anti-slip grip

