

PHILIPS



Cordless shaver, Wet
& Dry

Lady Shaver Series 8000

LED light, Flexible head

For legs, body and bikini

+6 accessories

Up to 100 min runtime



BRL159/00

Close shave. Even on hard-to-reach areas.

Shave gently. Care deeply. Self-care isn't selfish.

Our most premium Lady Shaver with a flexible head and LED light. You deserve an experience that's anything but ordinary. This special full-body edition offers hair removal solutions for face, body and bikini area. Dermatologically tested.

Goodbye, skin irritation. Hello, smooth skin.*

- Less burning, less redness, more skin comfort.**
- Dermatologically tested on sensitive skin.

Effortless. Fast and Easy.

- Wet for the shower. Dry for on the go.
- Fast and easy. Cord-free. Up to 100 min runtime.
- Face, body, bikini - one set for complete care.
- No fuzz. No fuss. With Facial Hair Remover.
- Shave, trim and shape the bikini area with bikini trimming head.
- Plastic parts made with >55% recycled plastics.

Close shave. Even on hard-to-reach areas.

- Removes hair as short as 0.2 mm for a gentle, clean shave.
- Flexible head glides seamlessly along your curves.

Lighting the way to smoother skin.

- LED light. Spot it. Shave it.

Lady Shaver Series 8000

Cordless shaver, Wet & Dry

BRL159/00

Highlights

Gentle and clean shave



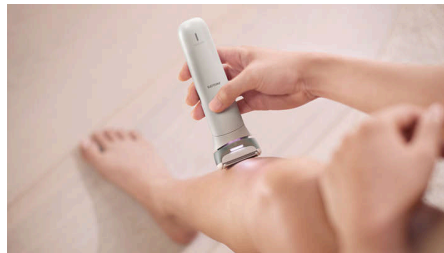
3-blade system with a flexible head for a gentle, clean shave - prevents nicks and cuts. Consists of dual-sided trimmer tips that pre-trim all hair. Shaving foil with diamond shaped openings are designed to shave pre-trimmed hair in one go.

Flexible head for body contours



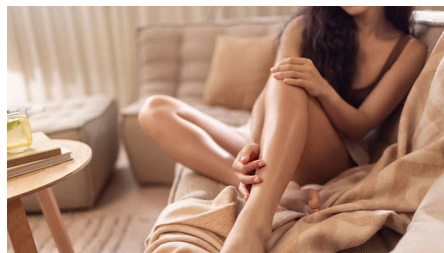
Introducing our first Philips Lady Shaver with a flexible shaving head, designed for your curves.*** The flexible head glides seamlessly along your curves for a close, precise shave. Hard-to-reach spots? No problem. It moves with your body contours and a LED light helps to spot every hair. Personalise your shaving with the two speed settings for more control over the speed and intensity of your hair removal.

LED light. Spot it. Shave it.



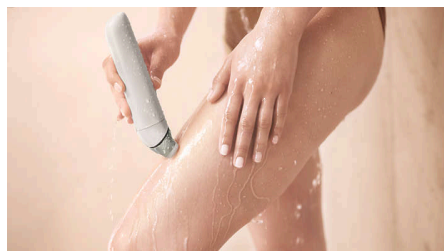
Because your skin deserves spotlight treatment. New Lady Shaver with built-in LED light catches every hair.

Goodbye, skin irritation*



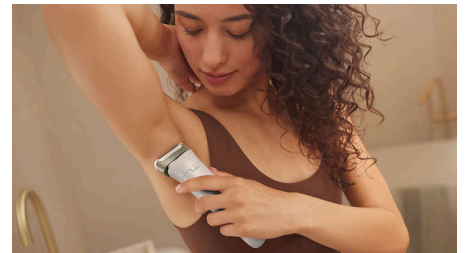
Say goodbye to razor burns and redness - 80% of women experienced smooth, irritation-free skin after use.** Dermatologically tested on sensitive skin.

Wet and Dry



Seamlessly fits into your routine - whether you're in the shower or on the move. Wet or dry, the choice is yours.

Effortless. Fast and easy



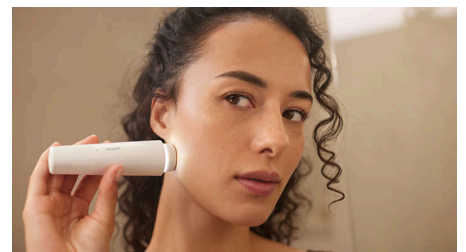
Built for the way hair grows. Shave both ways: Up. Down. Done. No cord holding you back - effortlessly reach every spot, from underarms, to legs, to toes. Stay powered for up to 100 mins on one charge. No interruptions.

One set, complete care



Face, body, bikini - one set for all your hair removal moments. Confidence made simple. Step 1: Exfoliate to remove dead skin and help to prevent ingrown hairs. Step 2: Pre-trim longer hairs and shave. Step 3: Use the bikini trimmer head for touch-ups down there. Step 4: Remove fuzz with Facial Hair Remover.

Facial Hair Remover. Gentler than wax



Experience close but gentle facial hair removal. Designed for optimal performance, with full circle light and mirror. No fuzz. No fuss.

Lady Shaver Series 8000

Cordless shaver, Wet & Dry

BRL159/00

Highlights

Trim and Shape



Personalise your bikini routine - trim and shape with confidence, thanks to the included bikini trimming head and bikini comb.

Dermatologically tested



Where technology meets care - for skin that feels as good as it looks. Designed for gentleness, tailored for care - because you deserve an experience that's more than ordinary.

One-time buy that lasts years



Plastic parts made with >55% recycled plastics, paper-based packaging and no adapter in the box. A one-time purchase that lasts for years.****
One shaving foil, a whole year of effortless shaving.

Lady Shaver Series 8000

Cordless shaver, Wet & Dry

BRL159/00

Specifications

Accessories

Pouch
Bikini trimmer head
Bikini trimmer comb
Trimming Comb
Exfoliation glove
Facial Hair Remover

Power

Battery type: Li-Ion
Charging time: 1 hour(s)
Battery run time: Up to 100 min

Technical specifications

Voltage: 5V/7.5 W
USB-A cable
Power adapter: No

Features

Speed settings: 2 settings
Integrated LED light

Service

2 year warranty

Ease of use

Cordless
Wet & Dry
Charging: USB-A Charging (5 V_{max} / ≥1 A)

Performance

Flexible head
3-Blade system
Dermatologically tested
Rounded trimmer tips

Design

Anti-slip grip

Consumer Trade Item

Height: 21.5 cm
Width: 14 cm
Length: 6 cm
Net weight: 0.281 kg
Gross weight: 0.392 kg
GTIN: 8720689037655
Country of origin: ID
Harmonized system code: 85102000

Outer Carton

Height: 23.1 cm
Width: 14.9 cm
Length: 24.9 cm
Net weight: 1.124 kg
Gross weight: 1.738 kg
GTIN: 18720689037652

Pallet Layer

Height: 23.1 cm
Width: 79.6 cm
Length: 119.4 cm

Pallet

Height: 115.5 cm
Width: 79.6 cm
Length: 119.4 cm
Net weight: 140.5 kg
Gross weight: 220.11 kg
GTIN: 68720689037657

