

PHILIPS



DUAL MODE gaming
monitor

Fast IPS Gaming
monitor

Evnia 3000

27" (68.5 cm)

3840 x 2160 (4K UHD)

1920 x 1080 (Full HD)



27M2N3800A

Broaden your gaming horizon

Unlock next-level gaming with this Evnia monitor's Dual Mode. Seamlessly switch between 3840 x 2160 @ 160Hz and 1920 x 1080 @ 320Hz with a simple toggle for unmatched versatility and performance.

Features designed for gamers needs

- Stark ShadowBoost: for enhancing visibility in dark scenes
- Smart Sniper: for zooming in on targets
- Evnia Precision Center: Maximize Your Gaming Experience
- SmartImage game mode optimized for gamers
- Built-in stereo speakers for multimedia
- MultiView enables simultaneous dual connection and view
- LowBlue mode and Flicker-free easy-on-the eyes viewing
- Smart Crosshair: for better aim and more fun

Built for fast action

- Dual Mode: The flexibility to match your gameplay
- 320Hz refresh rates for silky-smooth and vivid ima
- 0.5 ms ultra-fast speed for crisp image and smooth gameplay

Immersive visuals

- UltraClear 4K UHD (3840x2160) resolution for precision

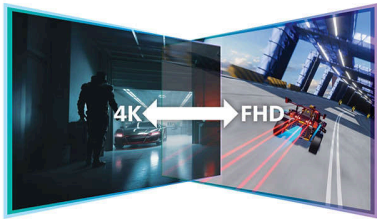
Fast IPS Gaming monitor

DUAL MODE gaming monitor

27M2N3800A/69

Highlights

Dual Mode



Experience the best of both worlds with Dual Mode. Seamlessly toggle between 3840 x 2160 @ 160Hz for stunning clarity and 1920 x 1080 @ 320Hz for ultra-smooth gameplay. Whether you crave breathtaking visuals or high-speed action, this monitor adapts to your needs in an instant.

320Hz fast refresh



Experience the ultimate edge in intense, competitive gaming with the Philips Evnia monitor. Designed for gamers who demand ultra-smooth, lag-free visuals, this monitor delivers a 320Hz refresh rate—way faster than standard displays. Say goodbye to frustrating frame drops that make enemies jump unpredictably on the screen. With this high-performance display, you'll see every critical movement in ultra-smooth motion, giving you the precision and clarity to stay ahead of the competition and take your shot with confidence.

0.5 ms Smart MBR fast response



Philips Evnia with 0.5 ms Smart MBR effectively eliminates smearing and motion blur, delivers sharper and precise visuals to enhance gaming experience. Fast-moving action and dramatic transitions will be rendered smoothly. Best choice for playing thrilling and twitch-sensitive games.

UltraClear 4K UHD resolution



These Philips displays utilize high performance panels to deliver UltraClear, 4K UHD (3840 x 2160) resolution images. Whether you are demanding professional requiring extremely detailed images for CAD solutions, using 3D graphics applications or a financial wizard working on huge spreadsheets, Philips displays will make your images and graphics come alive.

DisplayHDR 400



VESA-certified DisplayHDR 400 delivers a significant step-up from normal SDR displays. Unlike, other 'HDR compatible' screens, true

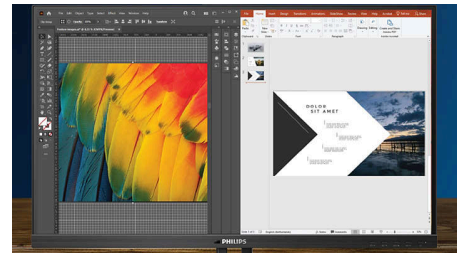
DisplayHDR 400 produces astonishing brightness, contrast and colors. With global dimming and minimum 400 nits brightness, images come to life with notable highlights while featuring deeper, more nuanced blacks. It renders a fuller palette of rich new colors, delivering a visual experience that engages your senses.

LowBlue mode & Flicker-free



Our LowBlue Mode and Flicker-free technology have been developed to reduce eye strain and fatigue often caused by long hours in front of a monitor.

MultiView technology



With the ultra-high resolution Philips MultiView display you can now experience a world of connectivity. MultiView enables active dual connect and view so that you can work with multiple devices like a PC and notebook simultaneously, for complex multi-tasking.



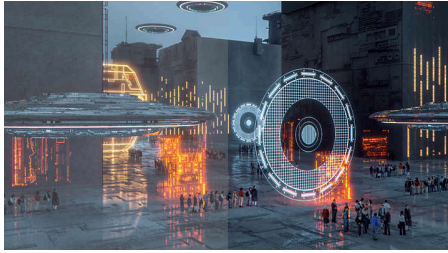
Fast IPS Gaming monitor

DUAL MODE gaming monitor

27M2N3800A/69

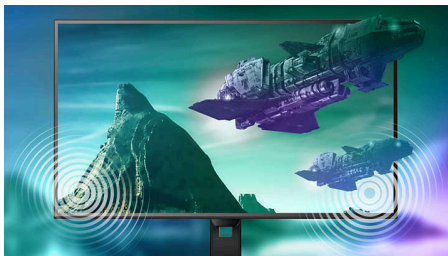
Highlights

SmartImage Game mode



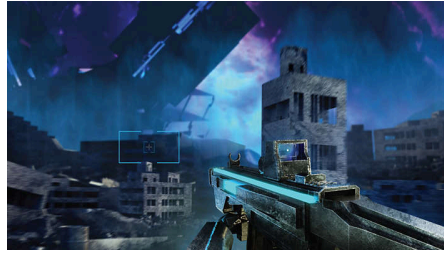
The new Philips gaming display has quick access OSD fine tuned for gamers, offering you multiple options. "FPS" mode (First person shooting) improves dark themes in games, allowing you to see hidden objects in dark areas. "Racing" mode adapts display with fastest response time, high color, along with image adjustments. "RTS" mode (Real time strategy) has a special SmartFrame mode which enables highlighting of specific area and allows for size and image adjustments. Gamer 1 and Gamer 2 enable you to save personal customized settings based on different games, ensuring best performance.

Built-in stereo speakers



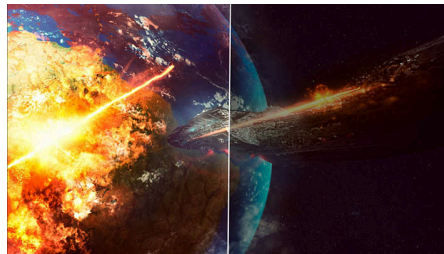
A pair of high quality stereo speakers built into a display device. It can be visible front firing, or invisible down firing, top firing, rear firing, etc depending on model and design.

Smart Crosshair



Color of Crosshair is set by default. When Smart Crosshair is on, the color will change as complementary color to the background color. Smart Crosshair enhances the accuracy of aiming so you can spot the enemies more easily.

Stark ShadowBoost



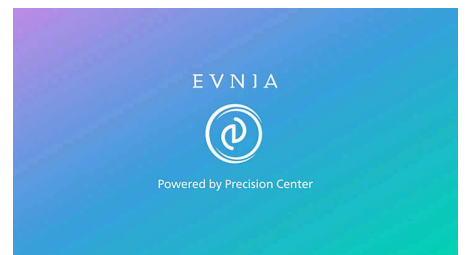
This feature enhances dark scenes without overexposing lightened areas. The Stark Shadowboost feature has three selectable levels that offer texturized images with better color saturation with higher contrast so you can see better in both light and dark environments. In addition, this feature helps you fine-tune your sight so that enemies get exposed more quickly when gaming.

Smart Sniper



This feature enables you to zoom in to multiple targets at once; ultimately making it easier to aim and hit your enemies.

Evnia Precision Center



Evnia Precision Center is an easy-to-use software designed to optimize and personalize your Evnia monitor. Whether you're a casual or competitive gamer, it offers a wide range of customization options to match your unique gaming style. With intuitive controls and seamless navigation, Evnia Precision Center gives you full control, providing everything you need to elevate your gaming to the next level—right at your fingertips.



Specifications

Picture/Display

Panel Size: 27 inch / 68.5 cm
 Aspect ratio: 16:9
 LCD panel type: Fast IPS
 Backlight type: W-LED system
 Pixel pitch: 0.1554 (H) mm x 0.1554 (V) mm
 Brightness: 350 (SDR)cd/m², 450nits (HDR On) cd/m²
 Display colors: 1.07B (8bits+FRC), (8bits @UHD 160Hz/FHD 320Hz; 10bits @ UHD120Hz/FHD 240Hz)
 Color gamut (typical): Adobe RGB 90%; DCI-P3:95%, sRGB: 130%, NTSC 110%*
 Contrast ratio (typical): 1000:1
 SmartContrast: Mega Infinity DCR
 Response time (typical): 1 ms (Gray to Gray)*
 Viewing angle: 178° (H) / 178° (V), @ C/R > 10
 Picture enhancement: SmartImage game
 Maximum resolution: 3840x2160 @ 160 Hz (HDMI/DP), 1920x1080 @ 320Hz (HDMI/DP)
 Effective viewing area: 596.736(H)x335.664(V)mm
 Scanning Frequency: 30-360kHz (H) , 48-160Hz(UHD), 48-320Hz (FHD) (V)
 sRGB
 Delta E: Delta <2 (sRGB)
 Flicker-free
 Pixel Density: 163 PPI
 LowBlue Mode
 Display Screen Coating: Anti-Glare, 3H, Haze 25%
 SmartUniformity: 93-105%
 Low Input Lag
 EasyRead
 Adaptive sync
 HDR: HDR 400
 Smart Sniper
 Smart MBR Sync
 Stark Shadow Boost
 Smart MBR: 0.5ms*
 Smart Crosshair
 Shadow Boost

Connectivity

Signal Input: HDMI 2.1 x 2 , DisplayPort 1.4 x 1
 Sync Input: Separate Sync
 Audio (In/Out): Headphone out
 HDCP: HDCP 1.4 (HDMI / DP), HDCP 2.3 (HDMI / DP)

Convenience

Built-in Speakers: 2Wx2
 Plug & Play Compatibility: DDC/CI, Mac OS, sRGB, Windows 11 / 10
 User convenience: Power On/Off, Menu/OK, Input/Up, Dual Resolution/Down, SmartImage game/Back
 OSD Languages: Brazil Portuguese, Czech, Dutch, English, Finnish, French, German, Greek, Hungarian, Italian, Japanese, Korean, Polish, Portuguese, Russian, Spanish, Simplified Chinese, Swedish, Turkish, Traditional Chinese, Ukrainian
 Other convenience: Kensington lock, VESA mount (100x100mm), LowBlue Mode, Low blue light
 MultiView: PIP/PBP mode, 2x Devices
 Control software: Evnia Precision Center
 Low blue light

Stand

Height adjustment: 130 mm
 Pivot: +90 degree
 Swivel: +/- 30 degree
 Tilt: -5/20 degree

Power

Power supply: Internal, 100-240VAC, 50-60Hz
 Off mode: 0.3 W (typ.)
 On mode: 25.65 W (typ.)
 Standby mode: 0.5 W (typ.)
 Power LED indicator: Operation - White, Standby mode- White (blinking)

Dimensions

Packaging in mm (WxDxH): 730 x 455 x 139 mm
 Product without stand (mm): 614 x 368 x 85 mm
 Product with stand(max height): 614 x 519 x 261 mm

Weight

Product with packaging (kg): 8.33 kg
 Product with stand (kg): 5.60 kg
 Product without stand (kg): 3.75 kg

Operating conditions

Altitude: Operation: +12,000ft (3,658m), Non-operation: +40,000ft (12,192m)
 Temperature range (operation): 0°C to 40 °C
 MTBF: 50,000 (Excluded backlight) hour(s)
 Relative humidity: 20%-80 %
 Temperature range (storage): -20°C to 60 °C

Sustainability

Environmental and energy: RoHS
 Recyclable packaging material: 100 %
 Post consumer recycled plastics: 85%*

Compliance and standards

Regulatory Approvals: CB, CE Mark, TUV/ISO9241-307, TUV-BAUART, EAC, EAC ROHS, PSB, UKCA, EMF, FCC, ICES-003

Cabinet

Color: Charcoal
 Finish: Textured

What's in the box?

Cables: DP cable, HDMI cable, Power cable
 Monitor with stand
 User Documentation



* "IPS" word mark / trademark and related patents on technologies belong to their respective owners.
 * Adobe RGB and DCI-P3 Coverage based on CIE1976, sRGB Area based on CIE1931, NTSC Area based on CIE1976.
 * For best output performance, please always ensure that your graphic card is capable of achieving the maximum resolution and refresh rate of this Philips display.
 * Response time value equal to SmartResponse
 * Smart MBR is to adjust brightness for blur reduction, so cannot adjust brightness while Smart MBR is turned on. To reduce motion blur, LED backlight will strobe synchronously with screen refresh, which may cause noticeable brightness change.
 * Smart MBR is gaming-optimized mode. Turn on Smart MBR may cause noticeable screen flickering. It is recommended to turn off when you are not using the gaming function.
 * Please note that the low input lag feature is permanently enabled and cannot be switched off.
 * This monitor strives for sustainability: the stand's feet and headphone holder are made with 35% recycled plastic and monitor's chassis is made up of 85% post-consumer recycled plastic.
 * The products and accessories listed on this leaflet may differ by country and region.
 * The monitor may look different from feature images.