



PHILIPS

Forming the foundations of your cardio-oncology care pathway

Supporting cardiovascular prevention workflows in line with ESC guidelines on cardio-oncology

Prevention and monitoring strategies for cancer therapy-related cardiovascular toxicity demand a truly interdisciplinary effort, as cardiologists must collaborate closely with oncology, hematology and other departments.

At Philips, we are ready to support multidisciplinary cardio-oncology teams in combining disciplines and practice.

Our AI-driven ultrasound tools allow for a comprehensive baseline assessment, giving a robust foundation to risk stratification and monitoring strategies. Look to powerful workflow solutions for multiple modalities to provide multidisciplinary cardio-oncology teams with a patient-centric overview that yields clear insights into the status of every patient during their cardio-oncology journey.

Aiding cardiologists in enhancing survivorship

To help avert cardiotoxicity, prevention is the key – by identifying potential at-risk patients through comprehensive baseline stratification and also by monitoring cancer patients as they receive their treatment. This helps detect potential biomarkers that could indicate the early stages of myocardial damage or cardiac dysfunction.

These priorities are reflected by the European Society of Cardiology (ESC) guidelines for cardio-oncology, which are available to view [here](#).¹

Supporting multidisciplinary cardio-oncology teams

At Philips, we seek to help multidisciplinary cardio-oncology teams to facilitate cancer treatment, improving the potential for enhanced patient outcomes.

Connect the dots

Empower multidisciplinary cardio-oncology teams to access patient data from anywhere in a single longitudinal view – from ECG, blood pressure and biomarker data to high-quality images

Define robust cardiovascular toxicity risk scores

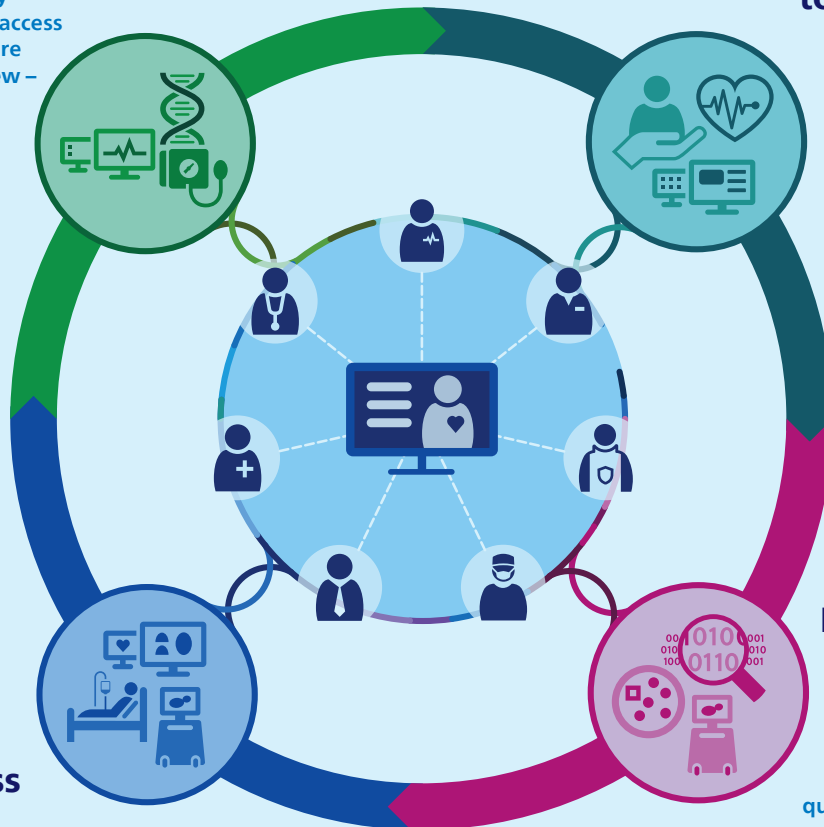
Take a highly standardized, easy-to-follow approach to cardio-oncology care and cardiotoxicity risk management – with solid baseline risk predictors

Determine stratification and frequency of treatment – monitor progress and follow-up

Follow a standardized, reproducible scan protocol no matter which clinician or platform is involved – building strong foundations for defining each patient's treatment plan

Perform baseline assessment

Work with AI-driven ultrasound tools to efficiently capture superb images and solid, robust quantification – and integrate results, in particular MR, if further clarity is needed



Helping cardiologists meet their clinical and workflow challenges

Working in line with ESC guidelines on cardio-oncology

Our solutions pave the way for robust, reproducible measurements and a clearly defined cancer treatment monitoring pathway for every patient, while helping clinical teams manage increased patient volumes efficiently.

These solutions help multidisciplinary cardio-oncology teams to manage the patient journey and coordinate at every step, through diagnosis to treatment and follow-up.



Philips cardio-oncology solutions and capabilities at a glance

Cardiac imaging systems

Philips EPIQ CVx and Affiniti CVx

Our cardiology ultrasound systems deliver exceptional imaging, high exam efficiency and robust, reliable AI-driven quantification capabilities. Quickly and easily acquire high-quality, standard 2D imaging, complemented by 3D imaging, for a consistently strong baseline assessment.

Philips Ingenia Ambition 1.5T

Cardiac MRI (CMR) is increasing in prominence across international cardiology and oncology guidelines and has broad applications in cardio-oncology.² Philips Ingenia Ambition 1.5T ensures high-quality scanning and reliable performance and patient-centered productivity. Its fully sealed magnet with only seven liters of liquid helium (instead of the usual 1,500 liters) is a safeguard against the consequences of helium scarcity and enables easy siting.

Workflow solutions

Philips Cardiovascular Workspace³

This scalable, interoperable image and information management solution allows cardiology teams to gather all patient information in a single place, ranging from ECG, blood pressure and biomarker data to acquired images. Information is presented in a longitudinal, patient-centric view, within an easy-to-access tool that can be used from anywhere to support and enable multidisciplinary cardio-oncology teams.

Philips Ultrasound Workspace

Ultrasound Workspace is a holistic, scalable cardiovascular viewing, analysis and reporting system. It provides high levels of AI-powered automation to increase reproducibility and enhance diagnostic confidence to manage and support cardio-oncology patients.

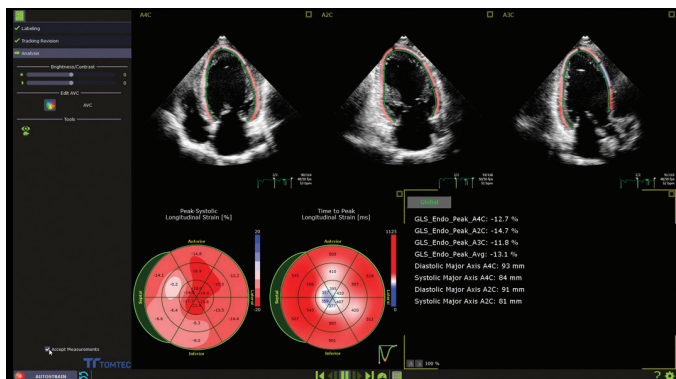
Philips Advanced Visualization

MR Cardiac Suite is part of Advanced Visualization Workspace and is a scalable solution that allows performing comprehensive cardiac assessment based on cardiac MR studies. The suite includes cardiac function analysis (LV & RV), cardiac late enhancement assessment, myocardial T1 and T2 mapping and more, which allow a comprehensive view of cardio-oncology patients. The suite features a unified user experience and automated, customizable workflows that aid physicians in reading these complex cases.

Tools for excellent visualization and streamlined workflow

Auto Strain LV

Access fast, reproducible LV longitudinal strain measurements: global, regional and mid-layer strain. 2D Auto EF Advanced allows creation of fast, reproducible results for easy comparison of LV functional data and supports quantification of contrast images.



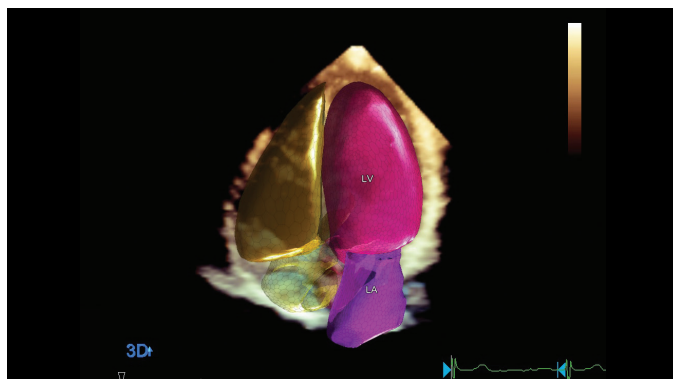
The bull's-eye view offered by Auto Strain is a comprehensive visualization of the entire left ventricle based on A4C, A2C and A3C views.

iRotate

Intelligent rotation that keeps the transducer in a fixed position, facilitating reproducible, robust images and helping bridge the gap between 2D and 3D thinking.

Dynamic HeartModel

Tracks every frame over the cardiac cycle using 3D speckle technology to provide a holistic view of the left heart function. Capture these measurements of 3D ejection fraction (3DEF) in seconds as part of a routine workflow for enhanced cardiac function assessments.



Dynamic HeartModel offers cardiac 3D chamber quantification driven by advanced automation.

Fast-SENC and MyoStrain*

With the combination of Philips Fast-SENC and MyoStrain, early dysfunction of heart failure can be detected across 48 segments of the heart⁴ in 10 minutes.



Building a strong foundation together

Philips solutions and capabilities deliver efficient and flexible workflows today while empowering multidisciplinary cardio-oncology teams to accommodate the increased patient volumes of tomorrow.

To learn more about solutions and services that can support you in managing your cardio-oncology care pathways, please visit www.philips.com/cardiotoxicity

*Using third-party Myocardial Solutions (MyoStrain) software. Copyright Myocardial Solutions, Inc. 2021. All rights reserved.
To view ESC guidelines for patients, visit: www.escardio.org/Guidelines/guidelines-for-patients

References

1. Lyon AR, López-Fernández T, Liam S Couch LS, et al. 2022 ESC Guidelines on cardio-oncology developed in collaboration with the European Hematology Association (EHA), the European Society for Therapeutic Radiology and Oncology (ESTRO) and the International Cardio-Oncology Society (IC-OS): Developed by the task force on cardio-oncology of the European Society of Cardiology (ESC). *European Heart Journal*. 2022;43(1):4229–4361. <https://doi.org/10.1093/eurheartj/ehac244>
2. Saunderson CED, Plein S, Manisty, CH. Role of cardiovascular magnetic resonance imaging in cardio-oncology, *European Heart Journal - Cardiovascular Imaging*. 2021; 22(4):383-396. <https://doi.org/10.1093/ehjci/jeaa345>
3. Philips Cardiovascular Workspace is the commercial name of the medical device Philips IntelliSpace Cardiovascular.
4. Korosoglou G, Giusca S, Hofmann NP, et al. Strain-encoded magnetic resonance: a method for the assessment of myocardial deformation. *ESC Heart Fail*. 2019 Aug;6(4):584-602. doi: 10.1002/ehf2.12442. Epub 2019 Apr 25. PMID: 31021534; PMCID: PMC6676282. <https://pubmed.ncbi.nlm.nih.gov/31021534/>

© 2025 Koninklijke Philips N.V. All rights are reserved.

www.philips.com

Printed in the Netherlands.
00001075-00-01 * JUN 2025

