

PHILIPS

EVNIA



DUAL MODE gaming
monitor

Fast IPS Gaming monitor

Evnia 3000

27" (68.5 cm)

3840 x 2160 (4K UHD)

1920 x 1080 (Full HD)



27M2N3800A

Broaden your gaming horizon

Unlock next-level gaming with this Evnia monitor's Dual Mode. Seamlessly switch between 3840 x 2160 @ 160 Hz and 1920 x 1080 @ 320 Hz with a simple toggle for unmatched versatility and performance.

Features designed for gamers' needs

- Stark ShadowBoost: for enhancing visibility in dark scenes
- Smart Sniper: for zooming in on targets
- Evnia Precision Centre: Maximise Your Gaming Experience
- SmartImage game mode optimised for gamers
- Built-in stereo speakers for multimedia
- MultiView enables simultaneous dual connection and view
- LowBlue mode and Flicker-free easy-on-the eyes viewing
- Smart Crosshair: for better aim and more fun

Built for fast action

- Dual Mode: The flexibility to match your gameplay
- 320 Hz refresh rates for silky-smooth and vivid images
- 0.5 ms ultra-fast speed for crisp images and smooth gameplay
- Certified NVIDIA® G-SYNC® compatible for smooth, fast gaming

Immersive visuals

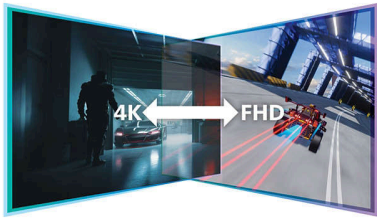
Fast IPS Gaming monitor

DUAL MODE gaming monitor

27M2N3800A/00

Highlights

Dual Mode



Experience the best of both worlds with Dual Mode. Seamlessly toggle between 3840 x 2160 @ 160 Hz for stunning clarity and 1920 x 1080 @ 320 Hz for ultra-smooth gameplay. Whether you crave breathtaking visuals or high-speed action, this monitor adapts to your needs in an instant.

320 Hz fast refresh



Experience the ultimate edge in intense, competitive gaming with the Philips Evnia monitor. Designed for gamers who demand ultra-smooth, lag-free visuals, this monitor delivers a 320 Hz refresh rate—way faster than standard displays. Say goodbye to frustrating frame drops that make enemies jump unpredictably on the screen. With this high-performance display, you'll see every critical movement in ultra-smooth motion, giving you the precision and clarity to stay ahead of the competition and take your shot with confidence.

0.5 ms Smart MBR fast response



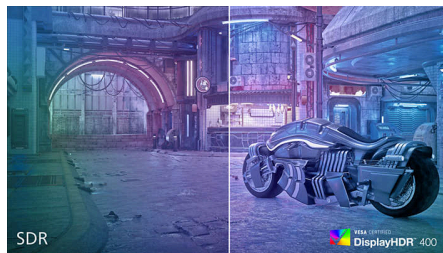
The Philips Evnia with 0.5 ms Smart MBR effectively eliminates smearing and motion blur, and delivers sharper and more precise visuals to enhance your gaming experience. Fast-moving action and dramatic transitions will be rendered smoothly. It's the best choice for playing thrilling and twitch-sensitive games.

UltraClear 4K UHD resolution



These Philips displays utilise high-performance panels to deliver UltraClear, 4K UHD (3840 x 2160) resolution images. Whether you are a demanding professional requiring extremely detailed images for CAD solutions, a user of 3D graphics applications or a financial wizard working on huge spreadsheets, Philips displays will make your images and graphics come alive.

DisplayHDR 400



VESA-certified DisplayHDR 400 delivers a significant step up from normal SDR displays. Unlike other 'HDR-compatible' screens, true

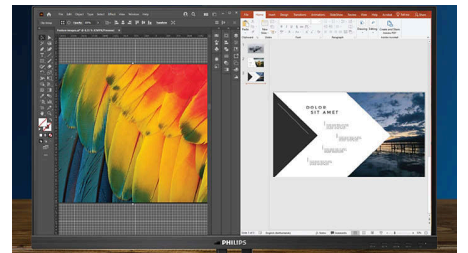
DisplayHDR 400 produces astonishing brightness, contrast and colours. With global dimming and minimum 400 nits of brightness, images come to life with notable highlights while featuring deeper, more nuanced blacks. It renders a fuller palette of rich new colours, delivering a visual experience that engages your senses.

LowBlue mode and Flicker-free



Our LowBlue Mode and Flicker-free technology have been developed to reduce eye strain and fatigue often caused by long hours in front of a monitor.

MultiView technology



With the ultra-high resolution Philips MultiView display, you can now experience a world of connectivity. MultiView enables active dual connect and view so that you can work with multiple devices like a PC and notebook simultaneously, for complex multitasking.



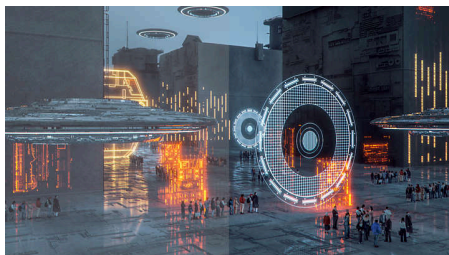
Fast IPS Gaming monitor

DUAL MODE gaming monitor

27M2N3800A/00

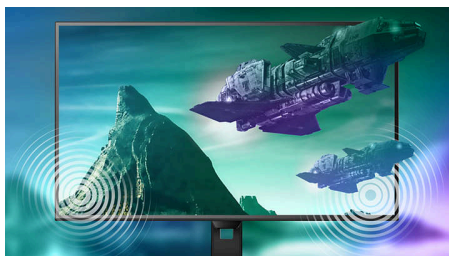
Highlights

SmartImage Game mode



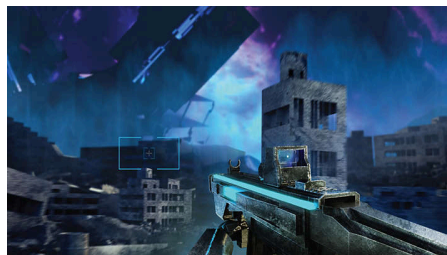
The new Philips gaming display has quick-access OSD fine-tuned for gamers, offering you multiple options. "FPS" mode (First person shooting) improves dark themes in games, allowing you to see hidden objects in dark areas. "Racing" mode adapts the display with the fastest response time and high colour, along with image adjustments. "RTS" mode (Real-time strategy) has a special SmartFrame mode that enables highlighting of specific area and allows for size and image adjustments. Gamer 1 and Gamer 2 enable you to save personal customised settings based on different games, ensuring best performance.

Built-in stereo speakers



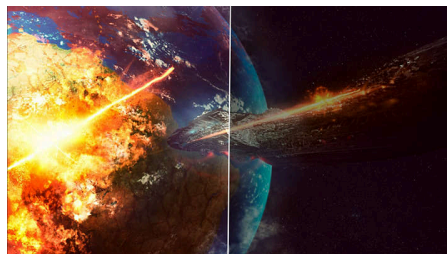
A pair of high-quality stereo speakers built into a display device. They may be visible front firing, or invisible down firing, top firing, rear firing etc. depending on model and design.

Smart Crosshair



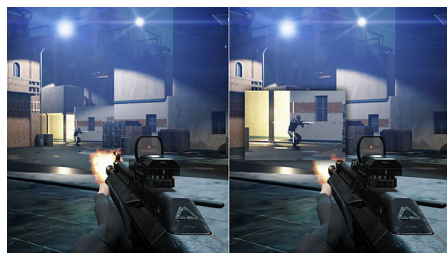
Colour of Crosshair is set by default. When Smart Crosshair is on, the colour will change as a complementary colour to the background colour. Smart Crosshair enhances the aiming accuracy so you can spot the enemies more easily.

Stark ShadowBoost



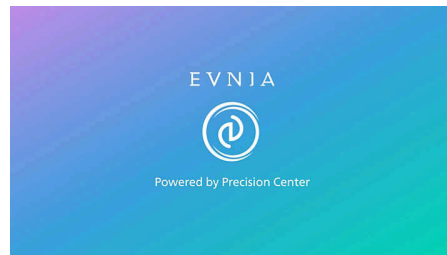
This feature enhances dark scenes without overexposing lightened areas. The Stark ShadowBoost feature has three selectable levels that offer texturised images with better colour saturation and higher contrast, so you can see better in both light and dark environments. In addition, this feature helps you fine-tune your sight so that enemies get exposed more quickly when gaming.

Smart Sniper



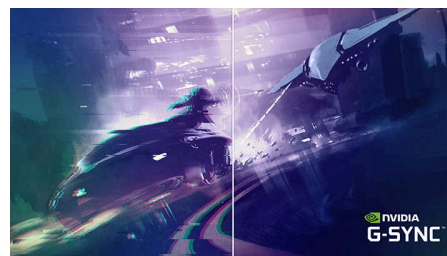
This feature enables you to zoom in to multiple targets at once; ultimately making it easier to aim and hit your enemies.

Evnia Precision Centre



Evnia Precision Centre is an easy-to-use software designed to optimise and personalise your Evnia monitor. Whether you're a casual or competitive gamer, it offers a wide range of customisation options to match your unique gaming style. With intuitive controls and seamless navigation, Evnia Precision Centre gives you full control, providing everything you need to elevate your gaming to the next level — right at your fingertips.

NVIDIA® G-SYNC® compatible



When playing intense games with high refresh rates, screen tearing may appear without optimal graphics synchronisation. This Philips display is certified as NVIDIA® G-SYNC® compatible, reducing screen tearing and syncing your monitor's refresh rate with your graphic card's output for a smoother gaming experience. Scenes appear instantly, objects look sharper, and gameplay is smooth, giving you a stunning visual experience and a serious competitive edge.



Flicker-free

Fast IPS Gaming monitor

DUAL MODE gaming monitor

27M2N3800A/00

Specifications

Picture/Display

Panel Size: 27 inch/68.5 cm
Aspect ratio: 16:9
LCD panel type: Fast IPS
Backlight type: W-LED system
Pixel pitch: 0.1554 (H) mm x 0.1554 (V) mm
Brightness: 350 (SDR)cd/m², 450nits (HDR On) cd/m²
Display colours: 1.07B (8 bits+FRC), (8 bits @UHD 160 Hz/FHD 320 Hz; 10 bits @ UHD 120 Hz/FHD 240 Hz)
Colour gamut (typical): Adobe RGB 90%; DCI-P3:95%, sRGB: 130%, NTSC 110%*
Contrast ratio (typical): 1000:1
SmartContrast: Mega Infinity DCR
Response time (typical): 1 ms (Grey to Grey)*
Viewing angle: 178° (H)/178° (V), @ C/R > 10
Picture enhancement: SmartImage game
Maximum resolution: 3840 x 2160 @ 160 Hz (HDMI/DP), 1920 x 1080 @ 320 Hz (HDMI/DP)
Effective viewing area: 596.736 (H) x 335.664 (V) mm
Scanning Frequency: 30-360 kHz (H), 48-160 Hz(UHD), 48-320 Hz (FHD) (V)
sRGB
Delta E: Delta <2 (sRGB)
Flicker-free
Pixel Density: 163 PPI
LowBlue Mode
Display Screen Coating: Anti-Glare, 3H, Haze 25%
SmartUniformity: 93-105%
Low Input Lag
EasyRead
Adaptive sync
G-SYNC
HDR: HDR 400
Smart Sniper
Smart MBR Sync
Stark Shadow Boost
Smart MBR: 0.5 ms*
Smart Crosshair
Shadow Boost

Connectivity

Signal Input: HDMI 2.1 x 2, DisplayPort 1.4 x 1
Sync Input: Separate Sync
Audio (In/Out): Headphone out
HDCP: HDCP 1.4 (HDMI/DP), HDCP 2.3 (HDMI/DP)

Convenience

Built-in Speakers: 2 W x 2
Plug and Play Compatibility: DDC/CI, Mac OS, sRGB, Windows 11/10
User convenience: Power On/Off, Menu/OK, Input/Up, Dual Resolution/Down, SmartImage game/Back
OSD Languages: Brazil Portuguese, Czech, Dutch, English, Finnish, French, German, Greek, Hungarian, Italian, Japanese, Korean, Polish, Portuguese, Russian, Spanish, Simplified Chinese, Swedish, Turkish, Traditional Chinese, Ukrainian
Other convenience: Kensington lock, VESA mount (100 x 100 mm), LowBlue Mode, Low blue light
MultiView: PIP/PBP mode, 2 x Devices
Control software: Evnia Precision Centre
Low blue light

Stand

Height adjustment: 130 mm
Pivot: +90 degree
Swivel: +/- 30 degree
Tilt: -5/20 degree

Power

Power supply: Internal, 100–240 VAC, 50–60 Hz
Off mode: 0.3 W (typ.)
On mode: 25.65 W (typ.)
Standby mode: 0.5 W (typ.)
Power LED indicator: Operation - White, Standby mode - White (flashing)
Energy Label Class: F

Dimensions

Packaging in mm (W x H x D): 730 x 455 x 139 mm
Product without stand (mm): 614 x 368 x 85 mm
Product with stand (max height): 614 x 519 x 261 mm

Weight

Product with packaging (kg): 8.33 kg
Product with stand (kg): 5.60 kg
Product without stand (kg): 3.75 kg

Operating conditions

Altitude: Operation: +12,000 ft (3658 m), Non-operation: +40,000 ft (12,192 m)
Temperature range (operation): 0°C to 40 °C
MTBF: 50,000 (Excluded backlight) hour(s)
Relative humidity: 20%-80 %
Temperature range (storage): -20°C to 60 °C

Sustainability

Environmental and energy: RoHS
Recyclable packaging material: 100 %
Post-consumer recycled plastics: 85%*

Compliance and standards

Regulatory Approvals: CB, CE Mark, TUV/ISO9241-307, TUV-BAUART, EAC, EAC ROHS, PSB, UKCA, EMF, FCC, ICES-003

Cabinet

Colour: Charcoal
Finish: Textured

What's in the box?

Cables: DP cable, HDMI cable, Power cable
Monitor with stand
User Documentation



- * "IPS" word mark / trademark and related patents on technologies belong to their respective owners.
- * Adobe RGB and DCI-P3 Coverage based on CIE1976, sRGB Area based on CIE1931, NTSC Area based on CIE1976.
- * For best output performance, please always ensure that your graphic card is capable of achieving the maximum resolution and refresh rate of this Philips display.
- * Response time value equal to SmartResponse
- * Smart MBR adjusts brightness for blur reduction, so you cannot adjust brightness while Smart MBR is turned on. To reduce motion blur, the LED backlight will strobe synchronously with each screen refresh, which may cause a noticeable change in brightness.
- * Smart MBR is a gaming-optimised mode. Turning on Smart MBR may cause noticeable screen flickering. We recommended turning it off when you are not using the gaming function.
- * Please note that the low input lag feature is permanently enabled and cannot be switched off.
- * This monitor strives for sustainability: the stand's feet and headphone holder are made with 35% recycled plastic and monitor's chassis is made up of 85% post-consumer recycled plastic.
- * NVIDIA® G-SYNC® support interface: DisplayPort.
- * Make sure to update NVIDIA® G-SYNC® driver to the latest version, see more information on NVIDIA website: <https://www.nvidia.com/>
- * Make sure that your graphic card supports NVIDIA® G-SYNC®.
- * The products and accessories listed on this leaflet may differ by country and region.
- * The monitor may look different from feature images.