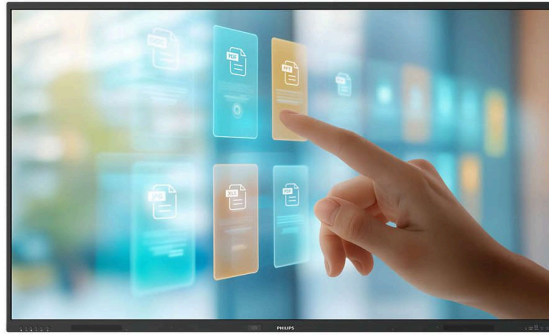


# PHILIPS



Collaboration  
Display

Signage Solutions

86"

Powered by Android

Multi-touch



86BDL4252E

## Interactive display

Featuring multi-touch technology

This interactive display, powered by Android 14, has up to 50 touchpoints, maximising engagement and collaboration. Toughened anti-glare, anti-reflection and anti-fingerprint glass are ideal for heavy daily use in busy environments.

### Smart and powerful

- OPS slot allows PC embedding without cabling
- EDLA certified display and Android 14
- Philips Wave-ready for remote display management and control
- Built-in ambient light sensor

### Style and safety built in

- Cast directly from any device
- Anti-glare and anti-reflection toughened glass 7 MOH
- Palm rejection
- Blue light filter

### Interactive and collaborative

- Wireless presentations
- Embedded microphones
- Multi-touch technology capable of 50 touchpoints
- Advanced IR touch and whiteboard application.

## Highlights

### **OPS slot**

Integrate a full-power PC or Android-powered CRD module directly into your Philips Professional Display. The OPS slot contains all of the connections you need to run your slot-in solution, including a power supply.

### **EDLA certified**

Improved user experience and students' engagement, security and app integration are all part of the service. Directly benefit from Google apps and services natively, including Google Classroom, Docs and Slides, and seamlessly integrate Chromebooks and other Android-native devices for simpler and more intuitive teaching and learning.

### **Philips Wave-ready**

Your Philips Wave-ready display enables you to manage and maintain this device remotely, wherever you are, whenever you choose. This evolutionary cloud platform puts you in full control, with simplified installation and setup, monitoring and controlling displays, upgrading

firmware, managing central content needs and setting power schedules. Saving you time, energy and environmental impact.

### **Built-in ambient light sensor**

Built-in ambient light sensors contribute to energy savings by automatically adjusting the screen brightness to the surrounding lighting conditions.

### **Cast directly from any device**

Teachers, students or employees can cast directly from their device with AirPlay, Google Cast and Miracast.

### **Anti-glare and anti-reflection toughened glass 7 MOH**

Anti-glare, anti-reflection, anti-fingerprint coatings, 7 MoH hardness.

### **Blue light filter**

Blue light filter to help protect eyes and avoid eye fatigue.

### **Palm rejection**

Palm rejection for enhanced precision.

### **Wireless presentations**

Philips ScreenShare makes it easy for teachers and students to wirelessly share their screens from their own device, whatever the operating system, via the browser or their favourite apps, onto the Philips Collaboration display.

### **Multi-touch technology**

Create a memorable interactive experience with up to 50 touchpoints at the same time for slick, agile lessons or brainstorming sessions. Perfect for collaborative and co-creation applications, this display connects your audience with any content. Offering enhanced user friendliness with eraser functionality, palm rejection and tip size recognition.

### **Advanced IR touch and whiteboard application.**

Advanced 0 gap IR touch with smaller, shallower bezels. The embedded whiteboard application enables seamless collaboration and brainstorming directly on the display.

# Specifications

## Picture/Display

Diagonal screen size (metric): 218.44 cm  
Diagonal screen size (inch): 86 inch  
Aspect ratio: 16:9  
Panel resolution: 3840 x 2160  
Pixel pitch: 0.4935 x 0.4935 mm  
Optimum resolution: 3840 x 2160 @ 60 Hz  
Brightness: 400 cd/m<sup>2</sup>  
Display colours: 1.07 Billion  
Contrast ratio (typical): 1200:1  
Dynamic contrast ratio: 500,000:1  
Response time (typical): 8 ms  
Viewing angle (horizontal): 178 degree  
Viewing angle (vertical): 178 degree  
Picture enhancement: 3/2 - 2/2 motion pull down, 3D Combfilter, Motion compens. deinterlacing, Progressive scan, 3D MA deinterlacing, Dynamic contrast enhancement  
Panel technology: ADS  
Operating system: Android 14  
OS UI resolution: 3840 x 2160 @ 60 Hz

## Connectivity

Audio output: 3.5 mm Mini Jack (x 1), SPDIF digital audio out (1 x)  
Video input: HDMI 2.0 (x 3), USB 3.0 (x 4), USB-C (up to 65 W), USB-C  
Audio input: 3.5 mm mini jack (x 1), Display port  
Other connections: OPS, USB-B (x 2)  
Video output: HDMI 2.0 (x 1), VGA  
External control: RS232C (in/out) D-Sub9, Gb LAN x 2  
Bluetooth: 5.2 BLE

## Convenience

Placement: Landscape (18/7)  
Screen-saving functions: Pixel Shift, Low Brightness  
Keyboard control: Lockable  
Remote control signal: Lockable  
Signal loop through: RS232, IR Loop through  
Other convenience: Carrying handles, NFC, Bluetooth  
Network controllable: RS232, RJ45

## Sound

Built-in speakers: 2 x 20 W

## Power

Mains power: 100 - 240 V~, 50 - 60 Hz, 7.5 A  
Consumption (Typical): 175 W  
Standby power consumption: <0.5 W  
Power Saving Features: Smart Power  
Energy Label Class: F

## Supported Display Resolution

Computer formats: 800 x 600, 56, 60, 72, 75 Hz, 848 x 480, 60 Hz, 1024 x 768, 60, 70, 75, 85 Hz, 1152 x 864, 75 Hz, 1280 x 960, 60, 85 Hz, 1280 x 1024, 60, 67, 75 Hz, 1360 x 768, 60 Hz, 1366 x 768, 60 Hz, 1600 x 1200, 60 Hz, 1920 x 1080, 60 Hz, 1920 x 1200, 60 Hz, 3840 x 2160, 24, 25, 30, 60 Hz  
Video formats: 480p, 60 Hz, 1080i, 50, 60 Hz, 1080p, 50, 60 Hz, 2160p, 50, 60 Hz, 480i, 60 Hz, 720p, 50, 60 Hz

## Dimensions

Set Width: 1957 mm  
Set Height: 1170.8 mm  
Set Depth: 97.1 mm  
Set Width (inch): 77.04 inch  
Set Height (inch): 46.1 inch  
Wall Mount: 800 x 600 mm, M8  
Set Depth (inch): 3.8 inch  
Bezel width: 17.3 mm (T), 16.4 mm (R/L), 44.9 mm (B)

## Weight

Product with packaging (kg): 70 kg  
Product with packaging (lb): 154.3 lb  
Product without stand (kg): 51.25 kg  
Product without stand (lb): 112.99 lb

## Operating conditions

Altitude: 0 ~ 3000 m  
Temperature range (operation): 0 ~ 40 °C  
MTBF: 50,000 hour(s)  
Temperature range (storage): -20 ~ 60 °C  
Humidity range (operation)[RH]: 10–90% (without condensation)  
Humidity range (storage) [RH]: 10–90% (without condensation)

## Multimedia Applications

USB Playback Video: H.263, H.264, H.265, MPEG1/2, MPEG4, VP8, VP9  
USB Playback Picture: BMP, JPEG, PNG, WEBP  
USB Playback Audio: AAC, HEAAC, MPEG

## Internal Player

CPU: 4 x A73 + 4 x A53  
GPU: Multi-Core Mali-G52  
Memory: 8 GB  
Storage: 128 GB eMMC  
Wi-Fi: 2T/2R 2.4/5/6 GHz

## Accessories

Included Accessories: Cleaning cloth (x 1), Remote control and AAA batteries, USB A to B cable (3 m) (x 1), AC Power Cord, Philips logo (x 1), Quick start guide (x 1), AC switch cover and Screw x 1, HDMI cable (1.8 m) (x 1), Touch Pen (x 2)  
Optional accessories: Pen tray with 2 x colour stylus

## Miscellaneous

On-Screen Display Languages: Arabic, Dutch, Danish, English, French, Finnish, German, Italian, Japanese, Norwegian, Polish, Portuguese, Russian, Spanish, Swedish, Simplified Chinese, Turkish, Traditional Chinese  
Warranty: 5-year warranty  
Regulatory approvals: CE, FCC, Class A, RoHS, CB, EAC, EMF, ETL

## Interactivity

Multi-touch technology: 0-gap Infrared touch  
Touchpoints: 50 simultaneous touch points  
Plug and play: HID compliant  
Protection glass: Anti-Glare, Blue light filter, Tempered safety glass 7 MOHS, Built-in Microphone

