

# PHILIPS



QD OLED gaming  
monitor

Gaming Monitor

Evnia 8000

26.5" (67.3cm)

2560 x 1440 (Quad HD)



27M2N8500X

## Gaming beyond innovation

This monitor is built for gaming at high speeds. Its 500Hz refresh rates, QD OLED panel, and DisplayHDR TrueBlack 500 certification make it a combination of incredible speed and premium picture quality.

### Features designed for gamers needs

- Stark ShadowBoost: for enhancing visibility in dark scenes
- Smart Sniper: for zooming in on targets
- Evnia Precision Center: Maximize Your Gaming Experience
- AI-enhanced Ambiglow: for intensified entertainment
- Tilt, swivel and height-adjust for an ideal viewing position
- MultiView enables simultaneous dual connection and view
- LowBlue mode and Flicker-free easy-on-the eyes viewing
- Smart Crosshair: for better aim and more fun

### Built for fast action

- 500Hz refresh rate for ultra-smooth and brilliant imagery

### Immersive visuals

- DisplayHDR™ TrueBlack 500 delivers incredible shadow details
- QD OLED for superior colors and vibrant visuals
- Crystalclear images with Quad HD 2560 x 1440 pixels

# Gaming Monitor

QD OLED gaming monitor

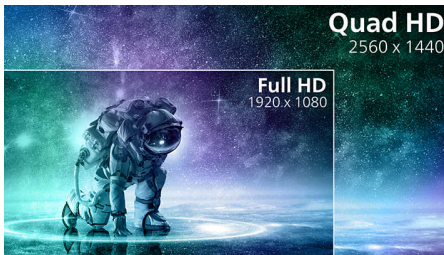
27M2N8500X/75

## Highlights

### 500Hz Gaming

For intense, competitive gaming, you need a display that delivers lag-free, ultra-smooth visuals. This Philips display refreshes up to 500 times per second, far faster than standard screens. Lower frame rates can make enemies appear to jump, making them harder to target. With a 500Hz refresh rate, it captures critical frames, ensuring ultra-smooth motion and precise enemy tracking. Featuring ultra-low input lag and no screen tearing, this Philips display is your ideal gaming partner.

### Crystalclear images

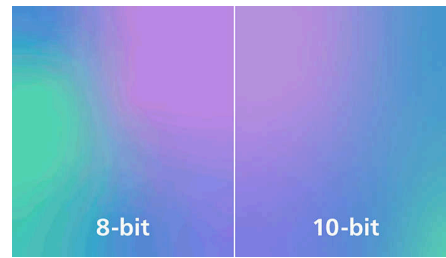


These Philips screens deliver Crystalclear, Quad HD 2560x1440 or 2560x1080 pixel images. Utilizing high performance panels with high density pixel count, enabled by high bandwidth sources, these new displays will make your images and graphics come alive. Whether you are demanding professional requiring extremely detailed information for CAD-CAM solutions, using 3D graphic applications or a financial wizard working on huge spreadsheets, Philips displays will give you Crystalclear images.

### DisplayHDR™ True Black 500

This Philips monitor is certified with VESA DisplayHDR™ True Black 500. Delivering stunningly accurate shadow detail with deeper blacks for a remarkable visual experience compared with conventional monitors of the same peak luminance. This Philips monitor comes with several HDR modes, each optimized for your usage scenarios: HDR Game, HDR Movie, HDR Photo, and VESA DisplayHDR certified level.

### True 10-bit color depth



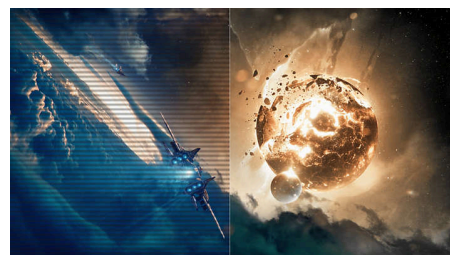
With this Philips true 10-bit color display, you can see color critical professional work of exceptional color accuracy and meeting professional standards. Compared with conventional 8-bit color display, this Philips monitor produces a more natural transition between hues for smoother gradients.

### QD OLED technology



QD-OLED represents a hybrid approach that marries the OLED panels and quantum dot technology. By combining what's best of both, QD-OLED guarantees high contrast, deep blacks, and unlimited viewing angles, with the higher peak brightness and more vibrant colors.

### LowBlue mode & Flicker-free



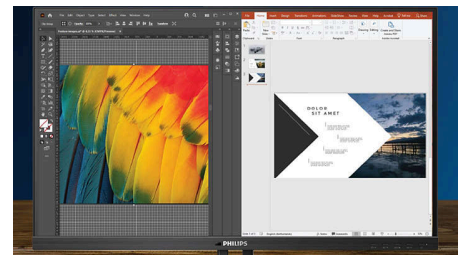
Our LowBlue Mode and Flicker-free technology have been developed to reduce eye strain and fatigue often caused by long hours in front of a monitor.

### AI-enhanced Ambiglow



Our AI-enhanced processor analyzes the incoming image content and continuously adapts the color and brightness of the emitted light to match the image. This feature adds a new dimension to your viewing experience. The innovative Ambiglow uses its AI capabilities to create a truly immersive and customizable gaming experience. From filling your gaming room with color to feeling like you are part of the game, the AI-enhanced Ambiglow is made to make your gaming experience the best it's ever been by combining intelligence, color, and light.

### MultiView technology



With the ultra-high resolution Philips MultiView display you can now experience a world of connectivity. MultiView enables active dual connect and view so that you can work with multiple devices like a PC and notebook simultaneously, for complex multi-tasking.

### Compact Ergo Base



The Compact Ergo Base is a people-friendly Philips monitor base that tilts, swivels and height-adjusts so each user can position the monitor for maximum viewing comfort and efficiency.



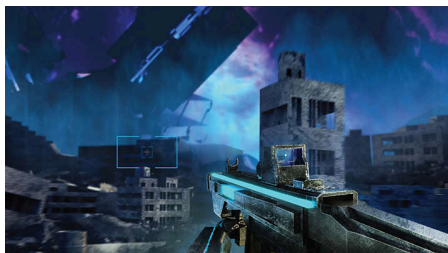
# Gaming Monitor

QD OLED gaming monitor

27M2N8500X/75

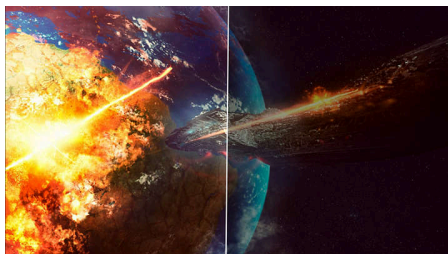
## Highlights

### Smart Crosshair



Color of Crosshair is set by default. When Smart Crosshair is on, the color will change as complementary color to the background color. Smart Crosshair enhances the accuracy of aiming so you can spot the enemies more easily.

### Stark ShadowBoost



This feature enhances dark scenes without overexposing lightened areas. The Stark Shadowboost feature has three selectable levels

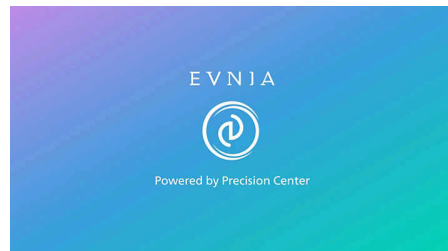
that offer texturized images with better color saturation with higher contrast so you can see better in both light and dark environments. In addition, this feature helps you fine-tune your sight so that enemies get exposed more quickly when gaming.

### Smart Sniper



This feature enables you to zoom in to multiple targets at once; ultimately making it easier to aim and hit your enemies.

### Evnia Precision Center



Evnia Precision Center is an easy-to-use software designed to optimize and personalize your Evnia monitor. Whether you're a casual or competitive gamer, it offers a wide range of customization options to match your unique gaming style. With intuitive controls and seamless navigation, Evnia Precision Center gives you full control, providing everything you need to elevate your gaming to the next level—right at your fingertips.



Quad HD

QD-OLED



LowBlue Mode



Multiview



CompactErgo  
Base

# Specifications

## Picture/Display

**Panel Size:** 26.5 inch / 67.3 cm

**Aspect ratio:** 16:9

**Monitor Panel Type:** QD OLED

**Pixel pitch:** 0.2292x0.2292mm

**Brightness:** SDR: 300nits (APL 100%); HDR: 515nits (APL 10%); HDR E/P: 1000nits (APL 3%) nit

**Display colors:** 1.07B (10bits)

**Color gamut (typical):** Adobe RGB 94%; DCI-P3:95%, sRGB: 133%, NTSC 105%.\*

**Contrast ratio (typical):** 1,500,000:1

**SmartContrast:** Mega Infinity DCR

**Response time (typical):** 0.03 ms (Gray to Gray)\*

**Viewing angle:** 178° (H) / 178° (V), @ C/R > 10000

**Picture enhancement:** SmartImage game

**Maximum resolution:** 2560x1440 @ 500Hz (DP/HDMI)

**Effective viewing area:** 590.42(H)x333.72(V)mm

**Scanning Frequency:** 30 - 510K kHz (H) / 48 - 500 Hz (V)

**sRGB**

**Delta E:** <2 (sRGB)

**Flicker-free**

**Pixel Density:** 109 PPI

**LowBlue Mode**

**Display Screen Coating:** Anti-reflection, 2H

**Low Input Lag**

**EasyRead**

**Adaptive sync**

**HDR:** DisplayHDR True Black 500 certified

**Pixel format:** RGB Q-Stripe\*

**Smart Sniper**

**Stark Shadow Boost**

**Windows Dynamic Lighting**

**Smart Crosshair**

**Shadow Boost**

## Connectivity

**Signal Input:** HDMI 2.1 x 2, DisplayPort 2.1 x 1

**Sync Input:** Separate Sync

**Audio (In/Out):** Headphone out

**HDCP:** HDCP 1.4 (HDMI / DisplayPort), HDCP 2.3 (HDMI / DisplayPort)

**USB Hub:** USB-B upstream x1, USB-A downstream x2 (downstream with x1 fast charge)

## Convenience

**Plug & Play Compatibility:** DDC/CI, Mac OS, sRGB, Windows 11 / 10

**User convenience:** Power On/Off, Menu/OK,

Input/Up, Game Settings/Down, SmartImage game/Back

**OSD Languages:** Brazil Portuguese, Czech, Dutch, English, Finnish, French, German, Greek, Hungarian, Italian, Japanese, Korean, Polish, Portuguese, Russian, Spanish, Simplified Chinese, Swedish, Turkish, Traditional Chinese, Ukrainian  
**Other convenience:** Kensington lock, VESA mount (100x100mm), VESA bracket, LowBlue Mode

**MultiView:** PIP/PBP mode, 2x devices

**Low blue light:** Yes\*

**Ambiglow:** Ambiglow 3 sided

## Stand

**Height adjustment:** 130 mm

**Swivel:** -/+ 30 degree

**Tilt:** -5/20 degree

## Power

**Power supply:** Internal, 100-240VAC, 50-60Hz

**Off mode:** 0.3 W (typ.)

**On mode:** 83.7 W (typ.)

**Standby mode:** 0.5 W (typ.)

**Power LED indicator:** Operation - White, Standby mode- White (blinking)

## Dimensions

**Packaging in mm (WxHxD):** 780 x 445 x 141 mm

**Product without stand (mm):** 609 x 358 x 61 mm

**Product with stand(max height):** 609 x 514 x 275 mm

## Weight

**Product with packaging (kg):** 10.83 kg

**Product with stand (kg):** 7.17 kg

**Product without stand (kg):** 5.84 kg

## Operating conditions

**Altitude:** Operation: +12,000ft (3,658m), Non-operation: +40,000ft (12,192m)

**Temperature range (operation):** 0°C to 40 °C

**MTBF:** 30,000 hour(s)

**Relative humidity:** 20%-80 %

**Temperature range (storage):** -20°C to 60 °C

## Sustainability

**Environmental and energy:** RoHS

**Recyclable packaging material:** 100 %

**Specific Substances:** PVC / BFR free housing

**Post consumer recycled plastics:** 35%\*

## Compliance and standards

**Regulatory Approvals:** CB, CE Mark, MEPS, PSB, CEL, CCC, UKCA, EMF, FCC, ICES-003

## Cabinet

**Color:** White

**Finish:** Textured

## Design

**Designed in Amsterdam, NL**



\* Response time value equal to SmartResponse. The measurement pattern is 1 horizontal line.

\* Adobe RGB and DCI-P3 Coverage based on CIE1976, sRGB Area based on CIE1931, NTSC Area based on CIE1976.

\* Active pixels: 2560(H) x 1440(V). Number of total pixels: 2576(H) x 1456(V); extra pixels on each side, space reserved for pixel orbiting.

\* For best output performance, please always ensure that your graphic card is capable of achieving the maximum resolution and refresh rate of this Philips display.

\* The ratio of display emission light in the range from 415 - 455 nm to the display emission of 400 - 500 nm shall be less than 50%.

\* This monitor strives for sustainability: the base is made with 35% recycled plastic.

\* The monitor may look different from feature images.

\* The products and accessories listed on this leaflet may differ by country and region.