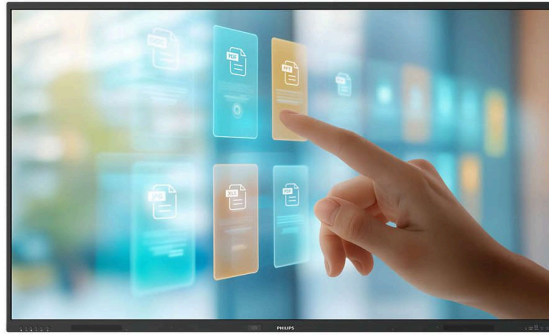


# PHILIPS



Collaboration  
Display

Signage Solutions

86"

Powered by Android

Multi-touch



86BDL4252E

## Interactive display

Featuring multi-touch technology

This interactive display, powered by Android 14, has up to 50 touchpoints, maximizing engagement and collaboration. Toughened anti-glare, anti-reflection and anti-fingerprint glass are ideal for heavy daily use in busy environments.

### Smart and powerful

- OPS slot allows PC embedding without cabling
- EDLA certified display and Android 14
- Philips Wave-ready for remote display management and control
- Built-in ambient light sensor

### Style and safety built-in

- Cast directly from any device
- Anti-glare and anti-reflection toughened glass 7 MOH
- Blue light filter
- Palm rejection

### Interactive and collaborative

- Wireless presentations
- Embedded microphones
- Multi-touch technology capable of 50 touchpoints
- Advanced IR touch and whiteboard application.

## Highlights

### **OPS slot**

Integrate a full-power PC or Android-powered CRD module directly into your Philips Professional Display. The OPS slot contains all the connections you need to run your slot-in solution, including a power supply.

### **EDLA certified**

Improved user experience and students' engagement, security, and app integration and all part of the service. Directly benefit from Google apps and services natively, including Google Classroom, Docs and Slides, and seamlessly integrate Chromebooks and other Android-native devices for simpler and more intuitive teaching and learning.

### **Philips Wave-ready**

Your Philips Wave-ready display enables you to manage and maintain this device remotely, wherever you are, whenever you choose. This evolutionary cloud platform puts you fully in control, with simplified installation and set-up, monitoring and controlling displays, upgrading

firmware, managing central content needs, and setting power schedules. Saving you time, energy and environmental impact.

### **Built-in ambient light sensor**

Built-in ambient light sensors contribute to energy savings by automatically adjusting the screen brightness to the surrounding lighting conditions.

### **Cast directly from any device**

Teachers, students or employees can cast directly from their device with AirPlay, Google Cast, and Miracast.

### **Anti-glare and anti-reflection**

Anti-glare, anti-reflection, anti-fingerprint coatings, 7 MoH hardness.

### **Blue light filter**

Blue light filter to help protect eyes and avoid eye fatigue.

### **Palm rejection**

Palm rejection for enhanced precision.

### **Wireless presentations**

Philips ScreenShare makes it easy for teachers, students or employees to wirelessly share their screens from their own device, whatever the operating system, via the browser or their favorite apps, onto the Philips Collaboration display.

### **Multi-touch technology**

Create a memorable interactive experience with up to 50 touchpoints at the same time for slick, agile lessons or brainstorming sessions. Perfect for collaborative and co-creation applications, this display connects your audience with any content. Offering enhanced user friendliness with eraser functionality, palm rejection and tip size recognition.

### **Advanced IR touch and whiteboard application.**

Advanced 0-gap IR touch with smaller, shallower bezels. The embedded whiteboard application enables seamless collaboration and brainstorming directly on the display.

# Specifications

## Picture/Display

**Diagonal screen size (metric):** 218.44 cm  
**Diagonal screen size (inch):** 86 inch  
**Aspect ratio:** 16:9  
**Panel resolution:** 3840 x 2160  
**Pixel pitch:** 0.4935 x 0.4935 mm  
**Optimum resolution:** 3840x 2160 @ 60Hz  
**Brightness:** 400 cd/m<sup>2</sup>  
**Display colors:** 1.07 Billion  
**Contrast ratio (typical):** 1200:1  
**Dynamic contrast ratio:** 500,000:1  
**Response time (typical):** 8 ms  
**Viewing angle (horizontal):** 178 degree  
**Viewing angle (vertical):** 178 degree  
**Picture enhancement:** 3/2 - 2/2 motion pull down, 3D Combfilter, Motion compens. deinterlacing, Progressive scan, 3D MA deinterlacing, Dynamic contrast enhancement  
**Panel technology:** ADS  
**Operating system:** Android 14  
**OS UI resolution:** 3840 x 2160 @ 60 Hz

## Connectivity

**Audio output:** 3.5 mm Mini Jack (x1), SPDIF digital audio out (1x)  
**Video input:** HDMI 2.0 (x3), USB 3.0 (x4), USB-C (up to 65W), USB-C  
**Audio input:** 3.5 mm mini jack (x1), Display port  
**Other connections:** OPS, USB-B (x2)  
**Video output:** HDMI 2.0 (x1), VGA  
**External control:** RS232C (in/out) D-Sub9, Gb LAN x2  
**Bluetooth:** 5.2 BLE

## Convenience

**Placement:** Landscape (18/7)  
**Screen saving functions:** Pixel Shift, Low Brightness  
**Keyboard control:** Lockable  
**Remote control signal:** Lockable  
**Signal loop through:** RS232, IR Loophrough  
**Other convenience:** Carrying handles, NFC, Bluetooth  
**Network controllable:** RS232, RJ45

## Sound

**Built-in speakers:** 2 x20 W

## Power

**Mains power:** 100 - 240V~, 50 - 60Hz, 7.5A  
**Consumption (Typical):** 175 W  
**Standby power consumption:** <0.5 W  
**Power Saving Features:** Smart Power  
**Energy Label Class:** F

## Supported Display Resolution

**Computer formats:** 800 x 600, 56, 60, 72, 75Hz, 848 x 480, 60Hz, 1024 x 768, 60, 70, 75, 85Hz, 1152 x 864, 75Hz, 1280 x 960, 60, 85Hz, 1280x1024, 60,67,75Hz, 1360 x 768, 60Hz, 1366 x 768, 60Hz, 1600 x 1200, 60Hz, 1920 x 1080, 60Hz, 1920 x 1200, 60Hz, 3840 x 2160, 24,25,30,60Hz  
**Video formats:** 480p, 60Hz, 1080i, 50, 60Hz, 1080p, 50, 60Hz, 2160p, 50, 60Hz, 480i, 60Hz, 720p, 50, 60Hz

## Dimensions

**Set Width:** 1957 mm  
**Set Height:** 1170.8 mm  
**Set Depth:** 97.1 mm  
**Set Width (inch):** 77.04 inch  
**Set Height (inch):** 46.1 inch  
**Wall Mount:** 800x600mm,M8  
**Set Depth (inch):** 3.8 inch  
**Bezel width:** 17.3mm(T), 16.4mm (R/L), 44.9mm(B)

## Weight

**Product with packaging (kg):** 70 kg  
**Product with packaging (lb):** 154.3 lb  
**Product without stand (kg):** 51.25 kg  
**Product without stand (lb):** 112.99 lb

## Operating conditions

**Altitude:** 0 ~ 3000 m  
**Temperature range (operation):** 0 ~ 40 °C  
**MTBF:** 50,000 hour(s)  
**Temperature range (storage):** -20 ~ 60 °C  
**Humidity range (operation)[RH]:** 10 ~ 90% (without condensation)  
**Humidity range (storage) [RH]:** 10 ~ 90% (without condensation)

## Multimedia Applications

**USB Playback Video:** H.263, H.264, H.265, MPEG1/2, MPEG4, VP8, VP9  
**USB Playback Picture:** BMP, JPEG, PNG, WEBP  
**USB Playback Audio:** AAC, HEAAC, MPEG

## Internal Player

**CPU:** 4xA73 + 4xA53  
**GPU:** Multi-Core Mali-G52  
**Memory:** 8GB  
**Storage:** 128GB eMMC  
**Wifi:** 2T/2R 2.4/5/6 GHz

## Accessories

**Included Accessories:** Cleaning cloth (x1), Remote control & AAA batteries, USB A to B cable (3m) (x1), AC Power Cord, Philips logo (x1), Quick start guide (x1), AC switch cover & Screw x1, HDMI cable (1.8 m) (x1), Touch Pen (x2)  
**Optional accessories:** Pen tray with 2x color stylus

## Miscellaneous

**On-Screen Display Languages:** Arabic, Dutch, Danish, English, French, Finnish, German, Italian, Japanese, Norwegian, Polish, Portuguese, Russian, Spanish, Swedish, Simplified Chinese, Turkish, Traditional Chinese  
**Warranty:** 5 year warranty  
**Regulatory approvals:** CE, FCC, Class A, RoHS, CB, EAC, EMF, ETL

## Interactivity

**Multi-touch technology:** 0-gap Infrared touch  
**Touch points:** 50 simultaneous touch points  
**Plug and play:** HID compliant  
**Protection glass:** Anti-Glare, Blue light filter, Tempered safety glass 7MOHS  
**Built-in Microphone**

