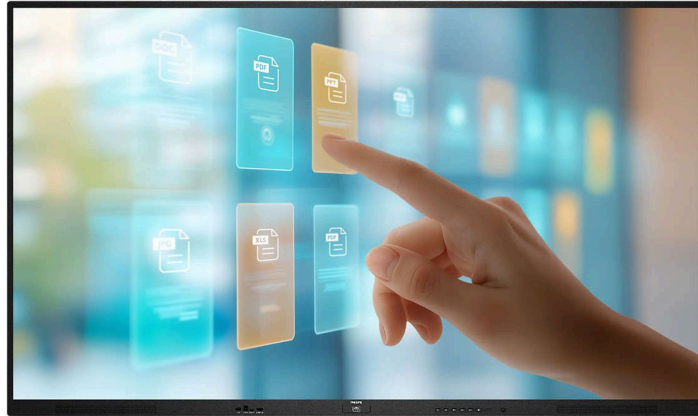


PHILIPS



Collaboration
Display

Signage Solutions

86"

Powered by Android

Multi-touch



86BDL4252E

Interactive display

Featuring multi-touch technology

This interactive display, powered by Android 14, has up to 50 touchpoints, maximizing engagement and collaboration. Toughened anti-glare, anti-reflection and anti-fingerprint glass are ideal for heavy daily use in busy environments.

Smart and powerful

- OPS slot allows PC embedding without cabling
- EDLA certified display and Android 14
- Philips Wave-ready for remote display management and control
- Built-in ambient light sensor

Style and safety built-in

- Cast directly from any device
- Anti-glare and anti-reflection toughened glass 7 MOH
- Blue light filter
- Palm rejection

Interactive and collaborative

- Wireless presentations
- Embedded microphones
- Multi-touch technology capable of 50 touchpoints
- Advanced IR touch and whiteboard application.

Highlights

OPS slot

Integrate a full-power PC or Android-powered CRD module directly into your Philips Professional Display. The OPS slot contains all the connections you need to run your slot-in solution, including a power supply.

EDLA certified

Improved user experience and students' engagement, security, and app integration and all part of the service. Directly benefit from Google apps and services natively, including Google Classroom, Docs and Slides, and seamlessly integrate Chromebooks and other Android-native devices for simpler and more intuitive teaching and learning.

Philips Wave-ready

Your Philips Wave-ready display enables you to manage and maintain this device remotely, wherever you are, whenever you choose. This evolutionary cloud platform puts you fully in control, with simplified installation and set-up, monitoring and controlling displays, upgrading

firmware, managing central content needs, and setting power schedules. Saving you time, energy and environmental impact.

Built-in ambient light sensor

Built-in ambient light sensors contribute to energy savings by automatically adjusting the screen brightness to the surrounding lighting conditions.

Cast directly from any device

Teachers, students or employees can cast directly from their device with AirPlay, Google Cast, and Miracast.

Anti-glare and anti-reflection

Anti-glare, anti-reflection, anti-fingerprint coatings, 7 MoH hardness.

Blue light filter

Blue light filter to help protect eyes and avoid eye fatigue.

Palm rejection

Palm rejection for enhanced precision.

Wireless presentations

Philips ScreenShare makes it easy for teachers, students or employees to wirelessly share their screens from their own device, whatever the operating system, via the browser or their favorite apps, onto the Philips Collaboration display.

Multi-touch technology

Create a memorable interactive experience with up to 50 touchpoints at the same time for slick, agile lessons or brainstorming sessions. Perfect for collaborative and co-creation applications, this display connects your audience with any content. Offering enhanced user friendliness with eraser functionality, palm rejection and tip size recognition.

Advanced IR touch and whiteboard application.

Advanced 0-gap IR touch with smaller, shallower bezels. The embedded whiteboard application enables seamless collaboration and brainstorming directly on the display.

Specifications

Picture/Display

Diagonal screen size (metric): 218.44 cm
Diagonal screen size (inch): 86 inch
Aspect ratio: 16:9
Panel resolution: 3840 x 2160
Pixel pitch: 0.4935 x 0.4935 mm
Optimum resolution: 3840x 2160 @ 60Hz
Brightness: 400 cd/m²
Display colors: 1.07 Billion
Contrast ratio (typical): 1200:1
Dynamic contrast ratio: 500,000:1
Response time (typical): 8 ms
Viewing angle (horizontal): 178 degree
Viewing angle (vertical): 178 degree
Picture enhancement: 3/2 - 2/2 motion pull down, 3D Combfilter, Motion compens. deinterlacing, Progressive scan, 3D MA deinterlacing, Dynamic contrast enhancement
Panel technology: ADS
Operating system: Android 14
OS UI resolution: 3840 x 2160 @ 60 Hz

Connectivity

Audio output: 3.5 mm Mini Jack (x1), SPDIF digital audio out (1x)
Video input: HDMI 2.0 (x3), USB 3.0 (x4), USB-C (up to 65W), USB-C
Audio input: 3.5 mm mini jack (x1), Display port
Other connections: OPS, USB-B (x2)
Video output: HDMI 2.0 (x1), VGA
External control: RS232C (in/out) D-Sub9, Gb LAN x2
Bluetooth: 5.2 BLE

Convenience

Placement: Landscape (18/7)
Screen saving functions: Pixel Shift, Low Brightness
Keyboard control: Lockable
Remote control signal: Lockable
Signal loop through: RS232, IR Loophrough
Other convenience: Carrying handles, NFC, Bluetooth
Network controllable: RS232, RJ45

Sound

Built-in speakers: 2 x20 W

Power

Mains power: 100 - 240V~, 50 - 60Hz, 7.5A
Consumption (Typical): 175 W
Standby power consumption: <0.5 W
Power Saving Features: Smart Power
Energy Label Class: F

Supported Display Resolution

Computer formats: 800 x 600, 56, 60, 72, 75Hz, 848 x 480, 60Hz, 1024 x 768, 60, 70, 75, 85Hz, 1152 x 864, 75Hz, 1280 x 960, 60, 85Hz, 1280x1024, 60,67,75Hz, 1360 x 768, 60Hz, 1366 x 768, 60Hz, 1600 x 1200, 60Hz, 1920 x 1080, 60Hz, 1920 x 1200, 60Hz, 3840 x 2160, 24,25,30,60Hz
Video formats: 480p, 60Hz, 1080i, 50, 60Hz, 1080p, 50, 60Hz, 2160p, 50, 60Hz, 480i, 60Hz, 720p, 50, 60Hz

Dimensions

Set Width: 1957 mm
Set Height: 1170.8 mm
Set Depth: 97.1 mm
Set Width (inch): 77.04 inch
Set Height (inch): 46.1 inch
Wall Mount: 800x600mm,M8
Set Depth (inch): 3.8 inch
Bezel width: 17.3mm(T), 16.4mm (R/L), 44.9mm(B)

Weight

Product with packaging (kg): 70 kg
Product with packaging (lb): 154.3 lb
Product without stand (kg): 51.25 kg
Product without stand (lb): 112.99 lb

Operating conditions

Altitude: 0 ~ 3000 m
Temperature range (operation): 0 ~ 40 °C
MTBF: 50,000 hour(s)
Temperature range (storage): -20 ~ 60 °C
Humidity range (operation)[RH]: 10 ~ 90% (without condensation)
Humidity range (storage) [RH]: 10 ~ 90% (without condensation)

Multimedia Applications

USB Playback Video: H.263, H.264, H.265, MPEG1/2, MPEG4, VP8, VP9
USB Playback Picture: BMP, JPEG, PNG, WEBP
USB Playback Audio: AAC, HEAAC, MPEG

Internal Player

CPU: 4xA73 + 4xA53
GPU: Multi-Core Mali-G52
Memory: 8GB
Storage: 128GB eMMC
Wifi: 2T/2R 2.4/5/6 GHz

Accessories

Included Accessories: Cleaning cloth (x1), Remote control & AAA batteries, USB A to B cable (3m) (x1), AC Power Cord, Philips logo (x1), Quick start guide (x1), AC switch cover & Screw x1, HDMI cable (1.8 m) (x1), Touch Pen (x2)
Optional accessories: Pen tray with 2x color stylus

Miscellaneous

On-Screen Display Languages: Arabic, Dutch, Danish, English, French, Finnish, German, Italian, Japanese, Norwegian, Polish, Portuguese, Russian, Spanish, Swedish, Simplified Chinese, Turkish, Traditional Chinese
Warranty: 5 year warranty
Regulatory approvals: CE, FCC, Class A, RoHS, CB, EAC, EMF, ETL

Interactivity

Multi-touch technology: 0-gap Infrared touch
Touch points: 50 simultaneous touch points
Plug and play: HID compliant
Protection glass: Anti-Glare, Blue light filter, Tempered safety glass 7MOHS, Built-in Microphone

