

# PHILIPS

LCD monitor with  
USB-C

Business Monitor

3000 series

27" (68.5 cm)

2560 x 1440 (Quad HD)

27B2U3601



## Redefining workflow productivity

Speed through daily tasks in comfort with this monitor's SoftBlue technology, Quad HD resolution, and 120Hz refresh rate. Not to mention, SmartErgoBase adds an ergonomic touch to the monitor's feature list.

### Excellent performance

- IPS technology for full colors and wide viewing angles

### Designed for the way you work

- Built-in stereo speakers for multimedia
- SmartErgoBase enables people-friendly ergonomic adjustments
- Eyesafe certified blue light protection and color accuracy
- Less eye fatigue with Flicker-free technology
- EasyRead mode for a paper-like reading experience
- SoftBlue Technology: for comfortable viewing

### Single cable USB-C connection

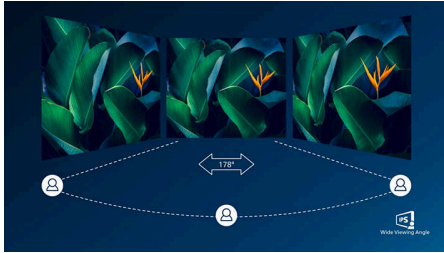
- RJ-45 to USB-C gives easy network connection with security
- USB 3.2 high speed data transfer

### Superb Picture Quality

- 120Hz refresh rates for ultra-smooth images
- Crystalclear images with Quad HD 2560 x 1440 pixels

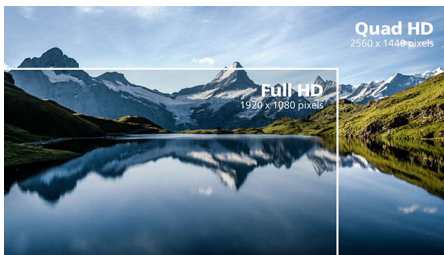
# Highlights

## IPS technology



IPS displays use an advanced technology which gives you extra wide viewing angles of 178/178 degree, making it possible to view the display from almost any angle - even in 90 degree Pivot mode! Unlike standard TN panels, IPS displays gives you remarkably crisp images with vivid colors, making it ideal not only for Photos, movies and web browsing, but also for professional applications which demand color accuracy and consistent brightness at all times.

## Crystalclear images



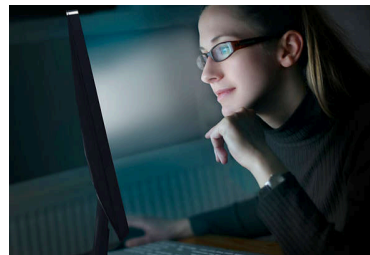
These Philips screens deliver Crystalclear, Quad HD 2560x1440 or 2560x1080 pixel images. Utilizing high performance panels with high density pixel count, enabled by high bandwidth sources, these new displays will make your images and graphics come alive. Whether you are demanding professional requiring extremely detailed information for CAD-CAM solutions, using 3D graphic applications or a financial wizard working on huge spreadsheets, Philips displays will give you Crystalclear images.

## 120Hz Fast refresh



For gaming and video performance, you demand display with lag free, ultra-smooth images. This Philips display redraws the screen image up-to 120 times per second, much faster than a standard display. A lower frame rate can make enemies appear to jump from spot to spot on the screen, making them difficult targets to hit. With 120Hz frame rate, you get those critical missing images on the screen which shows enemy movement in ultra-smooth motion so you can easily target them.

## SoftBlue Technology



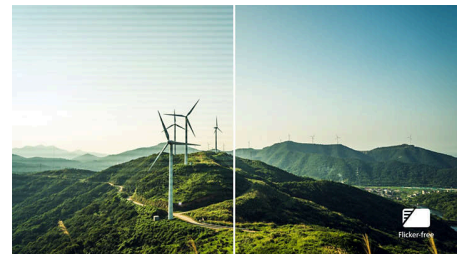
SoftBlue LED technology, combined with the monitor's low blue light panel, is an effective solution to reducing the adverse health effects caused by high exposure to blue light. In this monitor's panel, the ratio of light is reduced by nearly 50 percent while the SoftBlue LED technology works simultaneously by reducing harmful blue light rays emitted from the screen. Not to mention, the SoftBlue LED technology is tested and certified by TUV Rheinland Eyesafe® for its effectiveness in reducing blue light emissions.

## Built-in stereo speakers



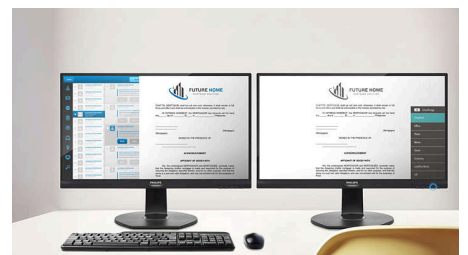
A pair of high quality stereo speakers built into a display device. It can be visible front firing, or invisible down firing, top firing, rear firing, etc depending on model and design.

## Flicker-free technology



Due to the way brightness is controlled on LED-backlit screens, some users experience flicker on their screen which causes eye fatigue. Philips Flicker-free Technology applies a new solution to regulate brightness and reduce flicker for more comfortable viewing.

## EasyRead mode



EasyRead mode for a paper-like reading experience



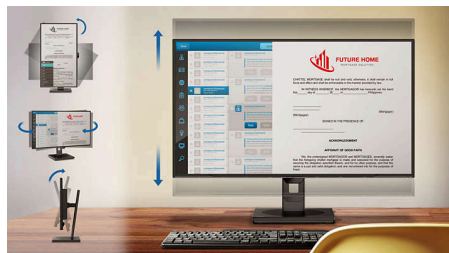
## Highlights

### TUV Rheinland Eyesafe - RPF<sup>®</sup> 40



Philips display meets TUV Rheinland Eyesafe<sup>®</sup> standard to truly protect you from the long exposure to blue light. The always-on blue light filter not only helps reduce digital eye strain, but also guarantees color integrity.

### SmartErgoBase



The SmartErgoBase is a monitor base that delivers ergonomic display comfort and provides cable management. The base can swivel, tilt and rotate to various angles to ensure maximum comfort. The height adjustable stand guarantees the optimal viewing level, reducing the physical strains of a long workday, while cable management reduces cable clutter and keeps the workspace neat and professional.

### High speed data transfer

USB 3.2 high speed data transfer

### USB-C Docking with RJ45



Simplify all peripherals from monitor to PC using one-cable-docking USB Type-C connector, includes networking, high resolution video output from PC to monitor, and surfing on Internet without an additional network cable, even without LAN port on your notebook. RJ45 connection through USB-C offers a fast and secure connection when needed. Getting the fastest data speeds allows you to transfer data from a HDD to your PC faster than ever. Additionally, USB-C with power delivery can even enable you to power and charge your notebook from the monitor, eliminating the need for extra power cables.



# Specifications

## Picture/Display

**Panel Size:** 27 inch / 68.5 cm  
**Aspect ratio:** 16:9  
**LCD panel type:** IPS technology  
**Backlight type:** W-LED system  
**Pixel pitch:** 0.2331x0.2331mm  
**Brightness:** 350 cd/m<sup>2</sup>  
**Display colors:** 16.7M (true 8 bits)  
**Color gamut (typical):** sRGB 125% , NTSC 114% \*  
**Contrast ratio (typical):** 1500:1  
**SmartContrast:** 50,000,000:1  
**Response time (typical):** 4 ms (Gray to Gray)\*  
**Viewing angle:** 178° (H) / 178° (V), @ C/R > 10  
**Picture enhancement:** SmartImage  
**Maximum resolution:**  
 2560x1440@120Hz(HDMI/DP/USBC)\*  
**Effective viewing area:** 596.74(H)x335.66(V) mm  
**Scanning Frequency:** 30-230 KHz (H) / 48 -120  
 Hz (V)  
 sRGB  
 SoftBlue  
 Flicker-free  
**Pixel Density:** 109 PPI  
**Display Screen Coating:** Anti-Glare, 3H, Haze  
 25%  
 EasyRead  
 Adaptive sync  
 EyeSafe

## Connectivity

**Signal Input:** HDMI 2.0 x 1, DisplayPort 1.4 x 1,  
 USB-C x 1 (upstream, DP Alt mode, Data, PD )  
**Sync Input:** Separate Sync, Sync on Green  
**Audio (In/Out):** Audio out  
**RJ45:** Ethernet LAN (USB 2.0: 10M/100M; USB  
 3.0: 1000M)  
**Signal Output:** DisplayPort Out  
**HDCP:** HDCP 1.4 (HDMI / DisplayPort / USB-C),  
 HDCP 2.2 (HDMI / DisplayPort / USB-C)  
**HBR3:** Yes (DP,USB-C)  
**USB Hub:** USB3.2, Gen1, 5G, Upstream: USB-C x1  
 (typical PD 90W, DP Alt mod); Downstream: USB-  
 A x4 (with x1 fast charge B.C 1.2)

## Power Delivery

**Max power delivery:** up to 90W (5V/3A, 7V/3A,  
 9V/3A, 10V/3A, 12V/3A, 15V/3A, 20V/4.5A)  
**Version:** USB PD version 3.0

## Convenience

**Built-in Speakers:** 2W x 2  
**Plug & Play Compatibility:** DDC/CI, Mac OS,  
 sRGB, Windows 11 / 10  
**User convenience:** SmartImage, Input,  
 Brightness, Menu, Power On/Off  
**OSD Languages:** Brazil Portuguese, Czech, Dutch,  
 English, French, Finnish, German, Greek,  
 Hungarian, Italian, Japanese, Korean,  
 Portuguese, Polish, Russian, Simplified Chinese,  
 Spanish, Swedish, Traditional Chinese, Turkish,  
 Ukrainian  
**Other convenience:** Kensington lock, VESA  
 mount (100x100mm)  
**Control software:** SmartControl

## Stand

**Height adjustment:** 150 mm  
**Pivot:** -/+90 degree  
**Swivel:** -/+180 degree  
**Tilt:** -5/30 degree

## Power

**ECO mode:** 13.8 W (typ.)  
**Power supply:** Built-in, 100-240VAC, 50-60Hz  
**Off mode:** 0.3W (typ)  
**On mode:** 23.43 (typ.) (EnergyStar test method)  
**Standby mode:** 0.35 W (typ)  
**Power LED indicator:** Operation - White, Standby  
 mode- White (blinking)  
**Energy Label Class:** D

## Dimensions

**Packaging in mm (WxHxD):** 730 x 445 x 139 mm  
**Product without stand (mm):** 615 x 361 x 46 mm  
**Product with stand(max height):** 615 x 539 x  
 146 mm

## Weight

**Product with packaging (kg):** 9.17 kg  
**Product with stand (kg):** 6.44 kg  
**Product without stand (kg):** 4.77 kg

## Operating conditions

**Altitude:** Operation: +12,000ft (3,658m), Non-  
 operation: +40,000ft (12,192m)  
**Temperature range (operation):** 0°C to 40 °C  
**Relative humidity:** 20%-80 %  
**Temperature range (storage):** -20°C to 60 °C  
**MTBF (demonstrated):** 70,000 hrs (excluded  
 backlight)

## Sustainability

**Environmental and energy:** Energy Star, EPEAT\*,  
 RoHS  
**Post consumer recycled plastic:** 85%  
**Recyclable packaging material:** 100 %  
**Specific Substances:** PVC / BFR free housing

## Compliance and standards

**Regulatory Approvals:** CB, CE Mark, TUV/GS,  
 TUV Ergo, TCO Certified, TCO Certified Edge,  
 EAC, EAC ROHS, MEPS, UKCA, EMF, FCC, ICES-  
 003, TÜV Rheinland Low Blue Light (Hardware  
 Solution), eyesafe® CERTIFIED 2.0

## Cabinet

**Finish:** Texture  
**Foot:** Black  
**Front bezel:** Black  
**Rear cover:** Black

## What's in the box?

**Cables:** HDMI cable, DisplayPort cable, USB-C to  
 C cable, Power cable  
**Monitor with stand**  
**User Documentation**



\* "IPS" word mark / trademark and related patents on  
 technologies belong to their respective owners.

\* Response time value equal to SmartResponse

\* sRGB area based on CIE 1931, NTSC area based on CIE 1976

\* EPEAT rating is valid only where Philips registers the  
 product. Please visit <https://www.epeat.net/> for  
 registration status in your country.

\* USB-C High Resolution mode enables a maximum  
 resolution of 2560x1440 at 120Hz.

\* The products and accessories listed on this leaflet may  
 differ by country and region.

\* The monitor may look different from feature images.