

PHILIPS



Quad HD gaming
monitor

Fast IPS Gaming
monitor

Evnia 3000

27" (68.5cm)

2560 x 1440 (Quad HD)



27M2N3500PF

Broaden your gaming horizon

This 27-inch Fast IPS monitor brings sharp visuals to gaming. With its overclockable 260Hz refresh rate and 0.3ms Smart MBR, you can expect clear visuals and a high-quality all-around gaming experience.

Features designed for gamers needs

- Stark ShadowBoost: for enhancing visibility in dark scenes
- Smart Sniper: for zooming in on targets
- Smart MBR: for reducing motion blur.
- Evnia Precision Center: Maximize Your Gaming Experience
- SmartImage game mode optimized for gamers
- LowBlue mode and Flicker-free easy-on-the eyes viewing
- Smart Crosshair: for better aim and more fun

Built for fast action

- 0.3 ms ultra-fast speed for crisp image and smooth gameplay
- Ultra-fast 260Hz refresh rate for virtually lag-free gaming
- Low input lag reduces time delay between devices to monitor

Immersive visuals

- High Dynamic Range (HDR) for more lifelike colorful visuals
- SmartContrast for rich black details

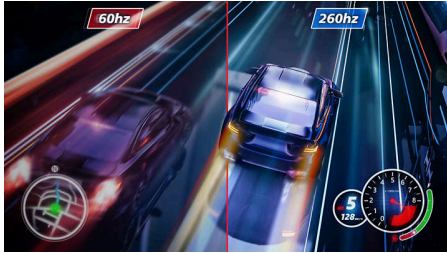
Fast IPS Gaming monitor

Quad HD gaming monitor

27M2N3500PF/71

Highlights

Overclockable 260Hz refresh rate



While playing the most intense engaging action-oriented games, Philips Evnia offers an overclockable 260 Hz refresh rate that enhances an ultra-smooth, lag-free gaming experience. Especially for fast-paced games like FPS and racing games, it gives a superior motion and clarity visuals. You will experience deeper immersion and feeling alive in game.

Low input lag



Input lag is the amount of time that elapses between performing an action with connected devices and seeing the result on screen. Low input lag reduces the time delay between entering a command from your devices to monitor, greatly improve on playing twitch-sensitive video games, particularly important to whom plays fast-paced, competitive games.

0.3 ms Smart MBR fast response



Philips display with 0.3 ms Smart MBR effectively eliminates smearing and motion blur, delivers shaper and precise visuals to enhance gaming

experience. Fast-moving action and dramatic transitions will be rendered smoothly. Best choice for playing thrilling and twitch-sensitive games.

Crystalclear images



These Philips screens deliver Crystalclear, Quad HD 2560x1440 or 2560x1080 pixel images. Utilizing high performance panels with high density pixel count, enabled by high bandwidth sources, these new displays will make your images and graphics come alive. Whether you are demanding professional requiring extremely detailed information for CAD-CAM solutions, using 3D graphic applications or a financial wizard working on huge spreadsheets, Philips displays will give you Crystalclear images.

SmartContrast



SmartContrast is a Philips technology that analyzes the contents you are displaying, automatically adjusting colors and controlling backlight intensity to dynamically enhance contrast for the best digital images and videos or when playing games where dark hues are displayed. When Economy mode is selected, contrast is adjusted and backlighting fine-tuned for just-right display of everyday office applications and lower power consumption.

High Dynamic Range (HDR)



High Dynamic Range delivers a dramatically different visual experience. With astonishing brightness, incomparable contrast and captivating color, images come to life with much greater brightness while also featuring much deeper, more nuanced darks. It renders a fuller palette of rich new colors never before seen on display, giving you a visual experience that engages your senses and inspires emotions.

LowBlue mode & Flicker-free



Our LowBlue Mode and Flicker-free technology have been developed to reduce eye strain and fatigue often caused by long hours in front of a monitor.



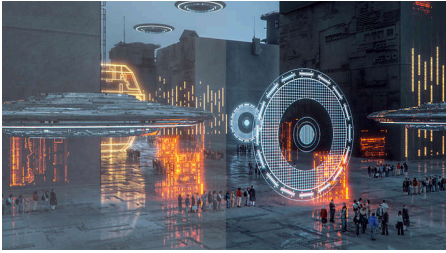
Fast IPS Gaming monitor

Quad HD gaming monitor

27M2N3500PF/71

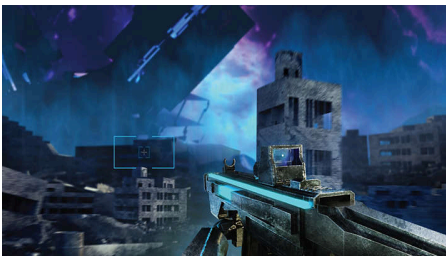
Highlights

SmartImage Game mode



The new Philips gaming display has quick access OSD fine tuned for gamers, offering you multiple options. "FPS" mode (First person shooting) improves dark themes in games, allowing you to see hidden objects in dark areas. "Racing" mode adapts display with fastest response time, high color, along with image adjustments. "RTS" mode (Real time strategy) has a special SmartFrame mode which enables highlighting of specific area and allows for size and image adjustments. Gamer 1 and Gamer 2 enable you to save personal customized settings based on different games, ensuring best performance.

Smart Crosshair



Color of Crosshair is set by default. When Smart Crosshair is on, the color will change as complementary color to the background color. Smart Crosshair enhances the accuracy of aiming so you can spot the enemies more easily.

Stark ShadowBoost



This feature enhances dark scenes without overexposing lightened areas. The Stark Shadowboost feature has three selectable levels that offer texturized images with better color saturation with higher contrast so you can see better in both light and dark environments. In addition, this feature helps you fine-tune your sight so that enemies get exposed more quickly when gaming.

Smart MBR



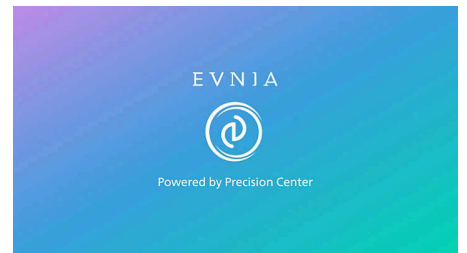
In an effort to reduce motion blur, this monitor's LED backlight will work simultaneously with the refresh rate to control brightness levels for the best picture clarity. Please note that Smart MBR is a type of gaming mode and it is recommended to turn the function off when not gaming as it may cause screen-flickering.

Smart Sniper



This feature enables you to zoom in to multiple targets at once; ultimately making it easier to aim and hit your enemies.

Evnia Precision Center



Evnia Precision Center is an easy-to-use software designed to optimize and personalize your Evnia monitor. Whether you're a casual or competitive gamer, it offers a wide range of customization options to match your unique gaming style. With intuitive controls and seamless navigation, Evnia Precision Center gives you full control, providing everything you need to elevate your gaming to the next level—right at your fingertips.



Fast IPS Gaming monitor

Quad HD gaming monitor

27M2N3500PF/71

Specifications

Picture/Display

Panel Size: 27 inch / 68.5 cm
Aspect ratio: 16:9
LCD panel type: IPS technology
Backlight type: W-LED system
Pixel pitch: 0.2331 x 0.2331 mm
Brightness: 300 cd/m²
Display colors: 1.07B (8+FRC)
Color gamut (typical): sRGB: 100%, Adobe RGB 90%; DCI-P3:95%, NTSC 105%*
Contrast ratio (typical): 1000:1
SmartContrast: Mega Infinity DCR
Viewing angle: 178° (H) / 178° (V), @ C/R > 10
Picture enhancement: SmartImage game
SmartResponse: 1 ms (Gray to Gray)*
Maximum resolution: 2560x1440 @260 Hz (by DP Overclock, 8bits)*, 2560x1440 @144Hz (HDMI, 8bits)
Effective viewing area: 596.736(H)x335.664(V)mm
Scanning Frequency: HDMI: 30 - 230 kHz (H) / 48 - 144 Hz (V); DP: 30 - 400 kHz (H) / 48 - 260 Hz (V) (Overclock)*
sRGB
Delta E: <2 (sRGB)
Flicker-free
Pixel Density: 109 PPI
LowBlue Mode
Display Screen Coating: Anti-Glare, 3H, Haze 25%
SmartUniformity: 93~105%
Low Input Lag
EasyRead
Adaptive sync
HDR: HDR 10 supported
Smart Sniper
Shadow Boost
Smart MBR
Smart MBR Sync
Stark Shadow Boost: Yes*
Smart MBR: 0.3ms*
Smart Crosshair
Shadow Boost

Connectivity

Signal Input: HDMI 2.0 x 2, DisplayPort 1.4 x 1
Sync Input: Separate Sync
Audio (In/Out): Headphone out
HDCP: HDCP 1.4 (HDMI / DP), HDCP 2.3 (HDMI / DP)

Convenience

Plug & Play Compatibility: DDC/CI, Mac OS, sRGB, Windows 11 / 10
User convenience: Power On/Off, Menu/OK, Input/Up, Game Settings/Down, SmartImage game/Back
OSD Languages: Brazil Portuguese, Czech, Dutch, English, Finnish, French, German, Greek, Hungarian, Italian, Japanese, Korean, Polish, Portuguese, Russian, Spanish, Simplified Chinese, Swedish, Turkish, Traditional Chinese, Ukrainian
Other convenience: Kensington lock, VESA mount (100x100mm), LowBlue Mode, Low blue light

Stand

Tilt: -5/20 degree

Power

Power supply: Internal, 100-240VAC, 50-60Hz
Off mode: 0.3 W (typ.)
On mode: 37.8 W (typ.)
Standby mode: 0.5 W (typ.)
Power LED indicator: Operation - White, Standby mode- White (blinking)

Dimensions

Packaging in mm (WxHxD): 690 x 420 x 141 mm
Product without stand (mm): 614 x 368 x 60 mm
Product with stand(max height): 614 x 462 x 215 mm

Weight

Product with packaging (kg): 6.70 kg
Product with stand (kg): 4.25 kg
Product without stand (kg): 3.69 kg

Operating conditions

Altitude: Operation: +12,000ft (3,658m), Non-operation: +40,000ft (12,192m)
Temperature range (operation): 0°C to 40 °C
MTBF: 50,000 (Excluded backlight) hour(s)
Relative humidity: 20%-80 %
Temperature range (storage): -20°C to 60 °C

Sustainability

Environmental and energy: RoHS
Recyclable packaging material: 100 %
Post consumer recycled plastics: 85%*

Compliance and standards

Regulatory Approvals: CB, CEL, CCC, CECP, CE Mark, UKCA, EMF, FCC, ICES-003

Cabinet

Color: Charcoal
Finish: Textured



* The maximum resolution works for DP input only.
* For best output performance, please always ensure that your graphic card is capable of achieving the maximum resolution and refresh rate of this Philips display.
* Response time value equal to SmartResponse
* Adobe RGB and DCI-P3 Coverage based on CIE1976, sRGB Area based on CIE1931, NTSC Area based on CIE1976.
* Display colors: 10bits can be reached by DP@200Hz with QHD resolution
* The Overclock function increases the native refresh rate, however, it does have some associated risks along with it. If the screen is displayed abnormally after rebooting, please switch off the Overclock setting located in the monitor's OSD menu.
* Smart MBR is to adjust brightness for blur reduction, so cannot adjust brightness while Smart MBR is turned on. To reduce motion blur, LED backlight will strobe synchronously with screen refresh, which may cause noticeable brightness change
* Smart MBR is gaming-optimized mode. Turn on Smart MBR may cause noticeable screen flickering. It is recommended to turn off when you are not using the gaming function
* This monitor strives for sustainability: the stand's feet and headphone holder are made with 35% recycled plastic and monitor's chassis is made up of 85% post-consumer recycled plastic.
* Stark Shadow Boost cannot be activated while Low Input Lag is enabled.
* The products and accessories listed on this leaflet may differ by country and region.
* The monitor may look different from feature images.