

PHILIPS

LCD monitor

Business Monitor

4000 series

24 (23.8" / 60.47 cm diag.)

1920 x 1080 (Full HD)

24B2N4200



Redefining workflow productivity

Speed through daily tasks in comfort with this monitor's SoftBlue technology, Full HD resolution, and 120Hz refresh rate. Not to mention, SmartErgoBase adds an ergonomic touch to the monitor's feature list.

Designed for the way you work

- Built-in stereo speakers for multimedia
- SmartErgoBase enables people-friendly ergonomic adjustments
- Less eye fatigue with Flicker-free technology
- EasyRead mode for a paper-like reading experience
- Eyesafe certified blue light protection and color accuracy
- SoftBlue Technology: for comfortable viewing

Easy to experience

- VESA mount for convenience
- HDMI ensures universal digital connectivity

Superb Picture Quality

- 120Hz refresh rates for ultra-smooth images
- 16:9 Full HD display for crisp detailed images
- IPS LED wide view technology for image and color accuracy

Highlights

IPS technology



IPS displays use an advanced technology which gives you extra wide viewing angles of 178/178 degree, making it possible to view the display from almost any angle. Unlike standard TN panels, IPS displays gives you remarkably crisp images with vivid colors, making it ideal not only for Photos, movies and web browsing, but also for professional applications which demand color accuracy and consistent brightness at all times.

16:9 Full HD display



Picture quality matters. Regular displays deliver quality, but you expect more. This display features enhanced Full HD 1920 x 1080 resolution. With Full HD for crisp detail paired with high brightness, incredible contrast and realistic colors expect a true to life picture.

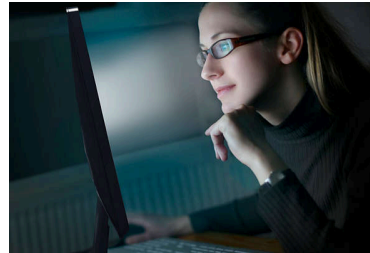
120Hz Fast refresh



For gaming and video performance, you demand display with lag free, ultra-smooth images. This Philips display redraws the screen image up-to

120 times per second, much faster than a standard display. A lower frame rate can make enemies appear to jump from spot to spot on the screen, making them difficult targets to hit. With 120Hz frame rate, you get those critical missing images on the screen which shows enemy movement in ultra-smooth motion so you can easily target them.

SoftBlue Technology



SoftBlue LED technology, combined with the monitor's low blue light panel, is an effective solution to reducing the adverse health effects caused by high exposure to blue light. In this monitor's panel, the ratio of light is reduced by nearly 50 percent while the SoftBlue LED technology works simultaneously by reducing harmful blue light rays emitted from the screen. Not to mention, the SoftBlue LED technology is tested and certified by TUV Rheinland Eyesafe® for its effectiveness in reducing blue light emissions.

Built-in stereo speakers



A pair of high quality stereo speakers built into a display device. It can be visible front firing, or invisible down firing, top firing, rear firing, etc depending on model and design.

Flicker-free technology



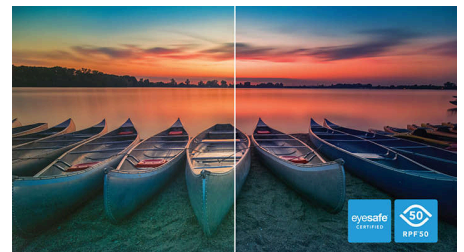
Due to the way brightness is controlled on LED-backlit screens, some users experience flicker on their screen which causes eye fatigue. Philips Flicker-free Technology applies a new solution to regulate brightness and reduce flicker for more comfortable viewing.

EasyRead mode



EasyRead mode for a paper-like reading experience

TUV Rheinland Eyesafe

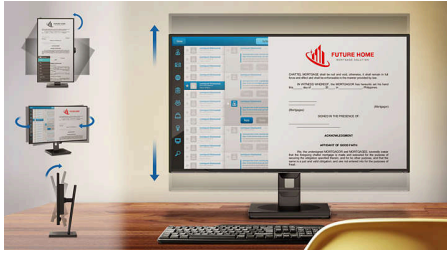


Philips display meets TUV Rheinland Eyesafe® standard to truly protect you from the long exposure to blue light. The always-on blue light filter not only helps reduce digital eye strain, but also guarantees color integrity.



Highlights

SmartErgoBase



The SmartErgoBase is a monitor base that delivers ergonomic display comfort and provides cable management. The base can swivel, tilt and rotate to various angles to ensure maximum comfort. The height adjustable stand guarantees the optimal viewing level, reducing the physical

strains of a long workday, while cable management reduces cable clutter and keeps the workspace neat and professional.

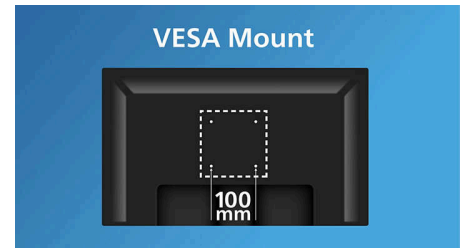
HDMI Ready



An HDMI-ready device has all the required hardware to accept High-Definition Multimedia Interface (HDMI) input. A HDMI cable enables

high-quality digital video and audio all transmitted over a single cable from a PC or any number of AV sources (including set-top boxes, DVD players, A/V receivers and video cameras).

VESA mount for convenience



VESA mount for convenience



Specifications

Picture/Display

Panel Size: 23.8 inch/60.47 cm
 Aspect ratio: 16:9
 LCD panel type: IPS technology
 Backlight type: W-LED system
 Pixel pitch: 0.2745(H)mm x 0.2745(V)mm
 Brightness: 300 cd/m²
 Display colors: 16.7M (8 bit)
 Color gamut (typical): NTSC 96%*, sRGB 110%*
 Contrast ratio (typical): 1500:1
 SmartContrast: 50,000,000:1
 Viewing angle: 178° (H) / 178° (V), @ C/R > 10
 Picture enhancement: SmartImage
 Maximum resolution: 1920x1080@120Hz
 Effective viewing area: 527.04(H)x296.46(V) mm
 Scanning Frequency: VGA: 30KHz - 85KHz (H) / 48Hz - 75 Hz (V); HDMI/DP: 30KHz - 140KHz (H) / 48Hz - 120 Hz (V)
 sRGB
 SoftBlue
 Flicker-free
 Pixel Density: 93 PPI
 Display Screen Coating: Anti-Glare, 3H, Haze 25%
 EasyRead
 Adaptive sync
 EyeSafe
 SmartResponse: 4 ms (Gray to Gray)*

Connectivity

Signal Input: VGA x1, HDMI 1.4 x 1, DisplayPort 1.2 x 1
 Sync Input: Separate Sync, Sync on Green
 Audio (In/Out): Audio in/Audio out
 HDCP: HDCP 1.4 (HDMI / DisplayPort)
 USB Hub: USB3.2, Gen1, 5G, Upstream: 1x USB-B, Downstream: USB-A x3 (with x1 fast charge B.C 1.2), USB-C2 x1 (data, 15W)

Convenience

Built-in Speakers: 2W x 2
 Plug & Play Compatibility: DDC/CI, Mac OS, sRGB, Windows 11 / 10
 User convenience: SmartImage, Input, Brightness, Menu, Power On/Off
 OSD Languages: Brazil Portuguese, Czech, Dutch, English, French, Finnish, German, Greek, Hungarian, Italian, Japanese, Korean, Portuguese, Polish, Russian, Simplified Chinese,

Spanish, Swedish, Traditional Chinese, Turkish, Ukrainian
 Other convenience: Kensington lock, Earphone hook, VESA mount (100x100mm)
 Control software: SmartControl

Stand

Height adjustment: 150 mm
 Pivot: -/+90 degree
 Swivel: -/+180 degree
 Tilt: -5/30 degree

Power

ECO mode: 10.2 W(typ.)
 Power supply: Built-in, 100-240VAC, 50-60Hz
 Off mode: 0.3 W (typ.)
 On mode: 12 W (typ.) (EnergyStar test method)
 Standby mode: 0.3 W (typ.)
 Power LED indicator: Operation - White, Standby mode- White (blinking)
 Energy Label Class: C

Dimensions

Packaging in mm (WxHxD): 650 x 400 x 139 mm
 Product without stand (mm): 544 x 326 x 56 mm
 Product with stand(max height): 544 x 503 x 228 mm

Weight

Product with packaging (kg): 7.39 kg
 Product with stand (kg): 5.45 kg
 Product without stand (kg): 3.71 kg

Operating conditions

Altitude: Operation: +12,000ft (3,658m), Non-operation: +40,000ft (12,192m)
 Temperature range (operation): 0°C to 40 °C
 Relative humidity: 20%-80 %
 Temperature range (storage): -20°C to 60 °C
 MTBF (demonstrated): 70,000 hrs (excluded backlight)

Sustainability

Environmental and energy: PowerSensor, LightSensor, Energy Star, EPEAT*, RoHS
 Post consumer recycled plastic: 85%+OBP 5%
 Recyclable packaging material: 100 %
 Specific Substances: Mercury free, PVC / BFR free housing

Compliance and standards

Regulatory Approvals: CB, CE Mark, ETL, CEC, TUV/GS, TUV Ergo, TCO Certified, TCO Certified Edge, EAC, EAEU RoHS, MEPS, UKCA, EMF, FCC, ICES-003, TÜV Rheinland Low Blue Light (Hardware Solution), eyesafe[®] CERTIFIED 2.0

Cabinet

Finish: Texture
 Foot: Silver
 Front bezel: Charcoal
 Rear cover: Charcoal

What's in the box?

Cables: HDMI cable, DisplayPort cable, Power cable
 Monitor with stand
 User Documentation



* "IPS" word mark / trademark and related patents on technologies belong to their respective owners.
 * Response time value equal to SmartResponse
 * sRGB Area based on CIE1931, NTSC Area based on CIE1976.
 * Activities such as screen sharing, on-line streaming video and audio over the Internet can impact your network performance. Your hardware, network bandwidth and its performance will determine overall audio and video quality.
 * When calculating energy costs saving from PowerSensor, both USB and Power delivery are excluded.
 * EPEAT rating is valid only where Philips registers the product. Please visit <https://www.epeat.net/> for registration status in your country.
 * The monitor may look different from feature images.
 * The products and accessories listed on this leaflet may differ by country and region.