

# PHILIPS

Quad HD gaming  
monitor

Curved Fast VA  
Gaming monitor

Evnia 3000

31.5" (80cm)

2560 x 1440 (QHD)

32M3C3540



## Broaden your gaming horizon

This curved Fast VA monitor offers gamers speed without skimping on image quality. With its 180hz refresh rate and HDR 400 quality visuals, gamers will experience seamless imagery with a monitor that can match their speed.

### Features designed for gamers needs

- SmartImage game mode optimized for gamers
- LowBlue mode and Flicker-free easy-on-the eyes viewing
- EasySelect menu toggle key for quick on-screen menu access
- Smart Crosshair: for better aim and more fun

### Built for fast action

- 180Hz refresh rates for ultra-smooth, brilliant images
- Fast VA Panel: For sharp imagery at high frame rates
- Low input lag reduces time delay between devices to monitor

### Immersive visuals

- SmartContrast for rich black details
- Curved display design for more immersive experience
- Crystalclear images with Quad HD 2560 x 1440 pixels
- DisplayHDR 400 for more lifelike and outstanding visuals

# Curved Fast VA Gaming monitor

Quad HD gaming monitor

32M3C3540/69

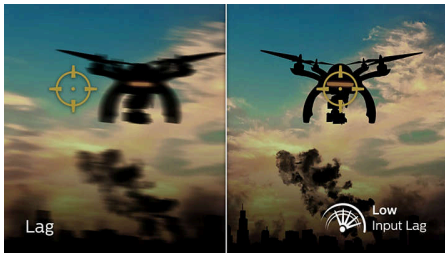
## Highlights

### 180Hz Gaming



You play intense, competitive gaming. You demand display with lag free, ultra-smooth images. This display redraws the screen image up-to 180 times per second, effectively faster than a standard display. A lower frame rate can make enemies appear to jump from spot to spot on the screen, making them difficult targets to hit. With 180Hz frame rate, you get those critical missing images on the screen which shows enemy movement in ultra-smooth motion so you can easily target them. With ultra-low input lag and no screen tearing, this Philips display is your perfect gaming partner.

### Low input lag



Input lag is the amount of time that elapses between performing an action with connected devices and seeing the result on screen. Low input lag reduces the time delay between entering a command from your devices to monitor, greatly improve on playing twitch-sensitive video games, particularly important to whom plays fast-paced, competitive games.

### Fast VA



This feature is made for action-packed gameplay. Not only does it produce virtually blur-free gaming, but it also pairs well with high frame rates for the best and sharpest imagery, guaranteed.

### Curved display design



Desktop monitors offer a personal user experience, which suits a curve design very well. The curved screen provides a pleasant yet subtle immersion effect, which focuses on you at the center of your desk.

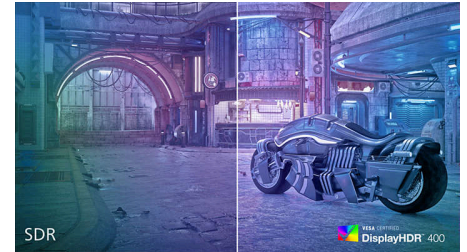
### SmartContrast



SmartContrast is a Philips technology that analyzes the contents you are displaying, automatically adjusting colors and controlling backlight intensity to dynamically enhance contrast for the best digital images and videos or when playing games where dark hues are displayed. When Economy mode is selected,

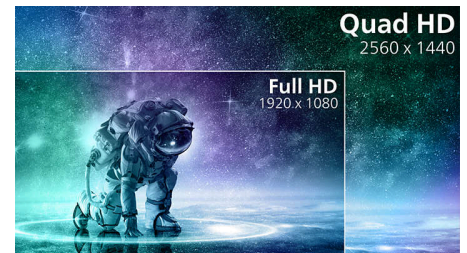
contrast is adjusted and backlighting fine-tuned for just-right display of everyday office applications and lower power consumption.

### DisplayHDR 400



VESA-certified DisplayHDR 400 delivers a significant step-up from normal SDR displays. Unlike, other 'HDR compatible' screens, true DisplayHDR 400 produces astonishing brightness, contrast and colors. With global dimming and minimum 400 nits brightness, images come to life with notable highlights while featuring deeper, more nuanced blacks. It renders a fuller palette of rich new colors, delivering a visual experience that engages your senses.

### Crystalclear images



These Philips screens deliver Crystalclear, Quad HD 2560x1440 or 2560x1080 pixel images. Utilizing high performance panels with high density pixel count, enabled by high bandwidth sources, these new displays will make your images and graphics come alive. Whether you are demanding professional requiring extremely detailed information for CAD-CAM solutions, using 3D graphic applications or a financial wizard working on huge spreadsheets, Philips displays will give you Crystalclear images.



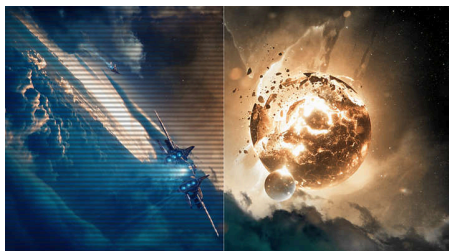
# Curved Fast VA Gaming monitor

Quad HD gaming monitor

32M3C3540/69

## Highlights

### LowBlue mode & Flicker-free



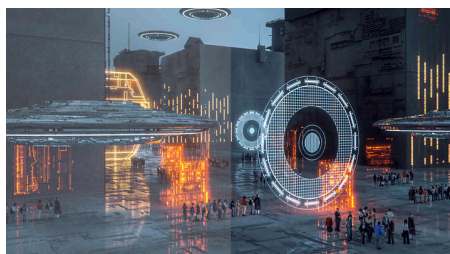
Our LowBlue Mode and Flicker-free technology have been developed to reduce eye strain and fatigue often caused by long hours in front of a monitor.

### EasySelect Menu Toggle Key



The discreetly placed EasySelect Menu Toggle Key allows you to make quick and easy adjustments to monitor settings in the On-Screen Display menu.

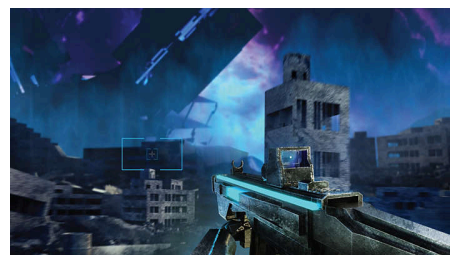
### SmartImage Game mode



The new Philips gaming display has quick access OSD fine tuned for gamers, offering you multiple options. "FPS" mode (First person shooting)

improves dark themes in games, allowing you to see hidden objects in dark areas. "Racing" mode adapts display with fastest response time, high color, along with image adjustments. "RTS" mode (Real time strategy) has a special SmartFrame mode which enables highlighting of specific area and allows for size and image adjustments. Gamer 1 and Gamer 2 enable you to save personal customized settings based on different games, ensuring best performance.

### Smart Crosshair



Color of Crosshair is set by default. When Smart Crosshair is on, the color will change as complementary color to the background color. Smart Crosshair enhances the accuracy of aiming so you can spot the enemies more easily.



# Curved Fast VA Gaming monitor

Quad HD gaming monitor

32M3C3540/69

## Specifications

### Picture/Display

**Panel Size:** 31.5 inch / 80 cm  
**Aspect ratio:** 16:9  
**LCD panel type:** VA 1000R  
**Backlight type:** W-LED system  
**Pixel pitch:** 0.0908mm(H) x 0.2724mm(V)  
**Brightness:** 350 cd/m<sup>2</sup>  
**Display colors:** 16.7 M (8 bit)  
**Color gamut (typical):** AdobeRGB 85%, DCI-P3 82%, sRGB 120%, NTSC 98%\*  
**Contrast ratio (typical):** 3500:1  
**SmartContrast:** Mega Infinity DCR  
**Response time (typical):** 1 ms (Gray to Gray)\*  
**Viewing angle:** 178° (H) / 178° (V), @ C/R > 10  
**Picture enhancement:** SmartImage game  
**Maximum resolution:** HDMI: 2560 x 1440 @ 144 Hz, DP: 2560 x 1440 @ 180 Hz\*, 8bits, RGB/444.  
**Effective viewing area:** 697.344mm(H) x 392.256mm(V)  
**Scanning Frequency:** HDMI: 30 - 218 kHz (H) / 48 - 144 Hz (V), DP: 30 - 266 kHz (H) / 48 - 180 Hz (V)  
**sRGB**  
**Delta E:** < 2 (sRGB)  
**Flicker-free**  
**Pixel Density:** 93 PPI  
**Display Screen Coating:** Anti-Glare, 3H  
**Low Input Lag**  
**EasyRead**  
**Adaptive sync**  
**HDR:** DisplayHDR 400 certified  
**Smart Crosshair**  
**Shadow Boost**

### Connectivity

**Signal Input:** HDMI 2.0 x 2, DisplayPort 1.4 x 1  
**Sync Input:** Separate Sync  
**Audio (In/Out):** Headphone out  
**HDCP:** HDCP 1.4 (HDMI / DP), HDCP 2.2 (HDMI / DP)  
**USB Hub:** USB-A only to the FW update

### Convenience

**Plug & Play Compatibility:** DDC/CI, Mac OS X, sRGB, Windows 11 / 10  
**User convenience:** Power On/Off, Menu/OK, Input/Up, Game Mode/Down, SmartImage game/Back  
**OSD Languages:** Brazil Portuguese, Czech, Dutch, English, Finnish, French, German, Greek, Hungarian, Italian, Japanese, Korean, Polish, Portuguese, Russian, Spanish, Simplified Chinese, Swedish, Turkish, Traditional Chinese, Ukrainian  
**Other convenience:** Kensington lock, VESA mount (100x100mm)

### Stand

**Tilt:** -5/20 degree

### Power

**Power supply:** Internal  
**Off mode:** 0.3 W (typ.)  
**On mode:** 52 W (typ.)  
**Standby mode:** 0.5 W (typ.)  
**Power LED indicator:** Operation - White, Standby mode - White (blinking)

### Dimensions

**Packaging in mm (WxHxD):** 869 x 550 x 213 mm  
**Product without stand (mm):** 702 x 426 x 119 mm  
**Product with stand(max height):** 702 x 535 x 303 mm

### Weight

**Product with packaging (kg):** 11.6 kg  
**Product with stand (kg):** 7 kg  
**Product without stand (kg):** 6.02 kg

### Operating conditions

**Altitude:** Operation: +12,000ft (3,658m), Non-operation: +40,000ft (12,192m)  
**Temperature range (operation):** 0°C to 40 °C  
**MTBF:** 30,000 (Excluded backlight) hour(s)  
**Relative humidity:** 20%-80 %  
**Temperature range (storage):** -20°C to 60 °C

### Sustainability

**Environmental and energy:** RoHS  
**Recyclable packaging material:** 100 %

### Compliance and standards

**Regulatory Approvals:** CCC, CEL

### Cabinet

**Color:** Black  
**Finish:** Textured

