

# PHILIPS

Full HD LCD monitor

Monitor

2000 series

27" (68.6 cm)

1920 x 1080 (Full HD)

27E1N2100A



## Work in style

Experience productivity in Full HD. This monitor is equipped with essentials for the workplace, such as LowBlue mode to protect the eyes, IPS LED wide view technology for high-quality imagery, and 1ms MPRT for sharp visuals.

### Good for Gaming

- 1ms (MPRT) fast response for crisp image and smooth gameplay
- 120Hz refresh rates for ultra-smooth, brilliant images
- Effortlessly smooth action with Adaptive-Sync technology

### Easy to experience

- SoftBlue Technology: for comfortable viewing
- Built-in stereo speakers for multimedia
- HDMI ensures universal digital connectivity

### Superb Picture Quality

- SmartContrast for deep black level details
- 16:9 Full HD display for crisp detailed images
- IPS LED wide view technology for image and color accuracy

# Monitor

Full HD LCD monitor

27E1N2100A/69

## Highlights

### IPS technology



IPS displays use an advanced technology which gives you extra wide viewing angles of 178/178 degree, making it possible to view the display from almost any angle. Unlike standard TN panels, IPS displays gives you remarkably crisp images with vivid colors, making it ideal not only for Photos, movies and web browsing, but also for professional applications which demand color accuracy and consistent brightness at all times.

### 16:9 Full HD display



Picture quality matters. Regular displays deliver quality, but you expect more. This display features enhanced Full HD 1920 x 1080 resolution. With Full HD for crisp detail paired with high brightness, incredible contrast and realistic colors expect a true to life picture.

### SmartContrast



SmartContrast is a Philips technology that analyzes the contents you are displaying, automatically adjusting colors and controlling backlight intensity to dynamically enhance contrast for the best digital images and videos or when playing games where dark hues are displayed. When Economy mode is selected, contrast is adjusted and backlighting fine-tuned for just-right display of everyday office applications and lower power consumption.

### HDMI Ready



An HDMI-ready device has all the required hardware to accept High-Definition Multimedia Interface (HDMI) input. A HDMI cable enables high-quality digital video and audio all

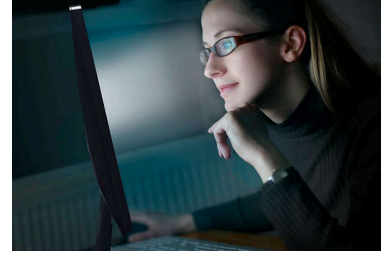
transmitted over a single cable from a PC or any number of AV sources (including set-top boxes, DVD players, A/V receivers and video cameras).

### Built-in stereo speakers



A pair of high quality stereo speakers built into a display device. It can be visible front firing, or invisible down firing, top firing, rear firing, etc depending on model and design.

### SoftBlue Technology



SoftBlue LED technology, combined with the monitor's low blue light panel, is an effective solution to reducing the adverse health effects caused by high exposure to blue light. In this monitor's panel, the ratio of light is reduced by nearly 50% while the SoftBlue LED technology works simultaneously by reducing harmful blue light rays emitted from the screen.



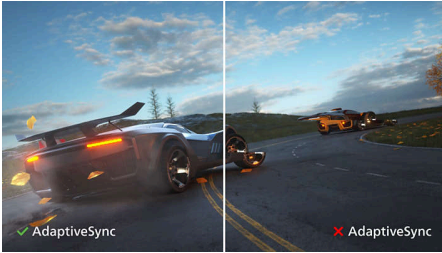
# Monitor

Full HD LCD monitor

27E1N2100A/69

## Highlights

### Adaptive-Sync technology



Gaming shouldn't be a choice between choppy gameplay or broken frames. Get fluid, artifact-free performance at virtually any framerate with Adaptive-Sync technology, smooth quick refresh and ultra fast response time.

### 1ms MPRT fast response



MPRT (motion picture response time) is more intuitive way to describe the response time, which directly refers the duration from seeing blurry noise to clean and crisp images. Philips monitor with 1 ms MPRT effectively eliminates smearing and motion blur, delivers shaper and precise visuals to enhance gaming experience. Best choice for playing thrilling and twitch-sensitive games.

### 120Hz Gaming



You play intense, competitive gaming. You demand display with lag free, ultra-smooth images. This Philips display redraws the screen image up-to 120 times per second, effectively faster than a standard display. A lower frame rate can make enemies appear to jump from spot to spot on the screen, making them difficult targets to hit. With 120Hz frame rate, you get those critical missing images on the screen which shows enemy movement in ultra-smooth motion so you can easily target them. With ultra-low input lag and no screen tearing, this Philips display is your perfect gaming partner.

# Monitor

Full HD LCD monitor

27E1N2100A/69

## Specifications

### Picture/Display

**Panel Size:** 27"/68.6cm  
**Aspect ratio:** 16:9  
**LCD panel type:** IPS technology  
**Backlight type:** W-LED system  
**Pixel pitch:** 0.3114x0.3114mm  
**Brightness:** 300 cd/m<sup>2</sup>  
**Display colors:** 16.7 M  
**Color gamut (typical):** Adobe RGB 82.89%; DCI-P3:80.49%, sRGB: 101.8%, NTSC 88.37%,\*  
**Contrast ratio (typical):** 1500:1  
**SmartContrast:** Mega Infinity DCR  
**Response time (typical):** 4 ms (Gray to Gray)\*  
**Viewing angle:** 178° (H) / 178° (V), @ C/R > 10  
**Picture enhancement:** SmartImage  
**Maximum resolution:** 1920x1080 @ 120 Hz  
**Effective viewing area:** 597.89(H)x336.31(V)mm  
**Scanning Frequency:** VGA: 30 KHz - 85 KHz (H) / 48 Hz - 75 Hz (V); HDMI: 30 KHz - 140 KHz (H) / 48 Hz - 120 Hz (V)  
**sRGB**  
**SoftBlue**  
**Flicker-free**  
**Pixel Density:** 82 PPI  
**LowBlue Mode**  
**Display Screen Coating:** Anti-Glare, 3H, Haze 25%  
**MPRT:** 1 ms\*  
**EasyRead**  
**Adaptive sync (VRR)**

### Connectivity

**Signal Input:** VGA x 1, HDMI 1.4 x 1  
**Sync Input:** Separate Sync  
**Audio (In/Out):** Audio-in, Audio out

### Convenience

**Built-in Speakers:** 2W X 2  
**Plug & Play Compatibility:** DDC/CI, Mac OS, sRGB, Windows 11 / 10  
**User convenience:** Power On/Off, Menu, Volume, Input, SmartImage  
**OSD Languages:** Brazil Portuguese, Czech, Dutch, English, Finnish, French, German, Greek, Hungarian, Italian, Japanese, Korean, Polish, Portuguese, Russian, Simplified Chinese, Spanish, Swedish, Traditional Chinese, Turkish, Ukrainian  
**Other convenience:** Kensington lock, VESA mount (100x100mm)

### Stand

**Tilt:** -5/20 degree

### Power

**Power supply:** Internal, 100-240VAC, 50-60Hz  
**Off mode:** 0.3 W (typ.)  
**On mode:** 18.6 W (typ.)  
**Standby mode:** 0.5 W (typ.)  
**Power LED indicator:** Operation - White, Standby mode- White (blinking)

### Dimensions

**Packaging in mm (WxHxD):** 690 x 455 x 141 mm  
**Product without stand (mm):** 617 x 357 x 46 mm  
**Product with stand(max height):** 617 x 457 x 211 mm

### Weight

**Product with packaging (kg):** 6.62 kg  
**Product with stand (kg):** 4.00 kg  
**Product without stand (kg):** 3.58 kg

### Operating conditions

**Altitude:** Operation: +12,000ft (3,658m), Non-operation: +40,000ft (12,192m)  
**Temperature range (operation):** 0 to 40 °C  
**MTBF:** 50,000 hrs (excluding backlight) hour(s)  
**Relative humidity:** 20%-80 %  
**Temperature range (storage):** -20 to 60 °C

### Sustainability

**Environmental and energy:** RoHS  
**Recyclable packaging material:** 100 %  
**Specific Substances:** PVC / BFR free housing

### Compliance and standards

**Regulatory Approvals:** CB, CE Mark, E-standby, KC, BSMI, UKCA, EMF, FCC, ICES-003

### Cabinet

**Color:** Black  
**Finish:** Textured



\* Response time value equal to SmartResponse  
\* Adobe RGB and DCI-P3 Coverage based on CIE1976, sRGB Area based on CIE1931, NTSC Area based on CIE1976.  
\* MPRT is to adjust brightness for blur reduction, so cannot adjust brightness while MPRT is turned on. To reduce motion blur, LED backlight will strobe synchronously with screen refresh, which may cause noticeable brightness change.  
\* MPRT is gaming-optimized mode. Turn on MPRT may cause noticeable screen flickering. It is recommended to turn off when you are not using the gaming function.  
\* The products and accessories listed on this leaflet may differ by country and region.  
\* The monitor may look different from feature images.