

# PHILIPS

Quad HD gaming  
monitor

Fast IPS Gaming  
monitor

Evnia 5000

27" (68.5cm)

2560 x 1440 (Quad HD)

27M3N5540U



## Your gaming experience to the utmost

This Fast IPS monitor offers gamers speed without skimping on image quality. With an ultra-fast 300hz refresh rate and HDR 400 quality visuals, gamers will experience seamless imagery with a monitor that can match their speed.

### Features designed for gamers needs

- ShadowBoost: for bringing dark scenes to life.
- SmartImage game mode optimized for gamers
- MultiView enables simultaneous dual connection and view
- LowBlue mode and Flicker-free easy-on-the eyes viewing
- EasySelect menu toggle key for quick on-screen menu access
- Smart Crosshair: for better aim and more fun

### Built for fast action

- 300Hz trail-blazing refresh rate for smoothest gameplay
- Low input lag reduces time delay between devices to monitor

### Immersive visuals

- SmartContrast for rich black details
- Crystalclear images with Quad HD 2560 x 1440 pixels
- DisplayHDR 400 for more lifelike and outstanding visuals

### Built for fast action

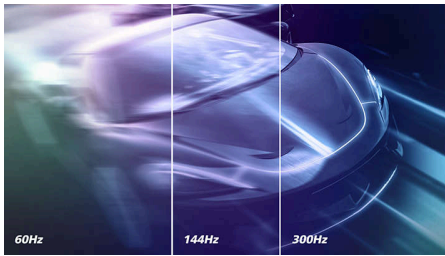
# Fast IPS Gaming monitor

Quad HD gaming monitor

27M3N5540U/69

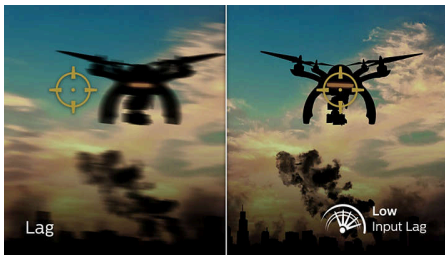
## Highlights

### Accelerated 300Hz refresh rate



Philips 300Hz display takes your gaming experience to new dimensions. The low input lag coupled with variable refresh rate technology gives you an Immersive gaming advantage. Plus, our wide view angle panel with high resolution provides a realistic gaming experience with unsurpassed color accuracy. Focus on what matters as adjustable stand gives the comfort you deserve and flicker-free gives an easy viewing, so you continue gaming without health worries.

### Low input lag



Input lag is the amount of time that elapses between performing an action with connected devices and seeing the result on screen. Low input lag reduces the time delay between entering a command from your devices to monitor, greatly improve on playing twitch-sensitive video games, particularly important to whom plays fast-paced, competitive games.

### Fast IPS



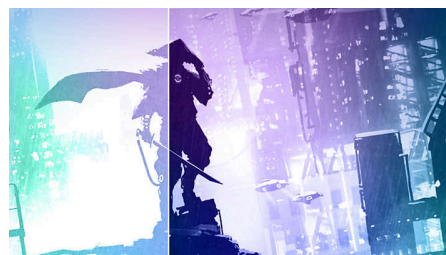
This feature is made for action-packed gameplay. Not only does it produce virtually blur-free gaming, but it also pairs well with high frame rates for the best and sharpest imagery, guaranteed.

### Crystalclear images



These Philips screens deliver Crystalclear, Quad HD 2560x1440 or 2560x1080 pixel images. Utilizing high performance panels with high density pixel count, enabled by high bandwidth sources, these new displays will make your images and graphics come alive. Whether you are demanding professional requiring extremely detailed information for CAD-CAM solutions, using 3D graphic applications or a financial wizard working on huge spreadsheets, Philips displays will give you Crystalclear images.

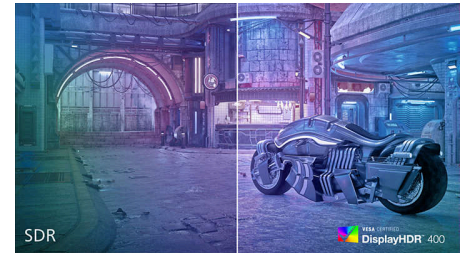
### SmartContrast



SmartContrast is a Philips technology that analyzes the contents you are displaying, automatically adjusting colors and controlling

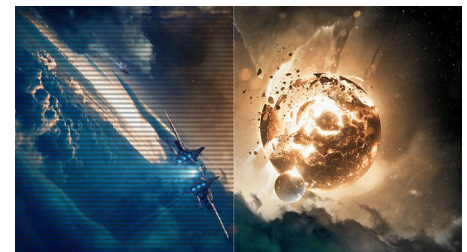
backlight intensity to dynamically enhance contrast for the best digital images and videos or when playing games where dark hues are displayed. When Economy mode is selected, contrast is adjusted and backlighting fine-tuned for just-right display of everyday office applications and lower power consumption.

### DisplayHDR 400



VESA-certified DisplayHDR 400 delivers a significant step-up from normal SDR displays. Unlike, other 'HDR compatible' screens, true DisplayHDR 400 produces astonishing brightness, contrast and colors. With global dimming and minimum 400 nits brightness, images come to life with notable highlights while featuring deeper, more nuanced blacks. It renders a fuller palette of rich new colors, delivering a visual experience that engages your senses.

### LowBlue mode & Flicker-free



Our LowBlue Mode and Flicker-free technology have been developed to reduce eye strain and fatigue often caused by long hours in front of a monitor.



# Fast IPS Gaming monitor

Quad HD gaming monitor

27M3N5540U/69

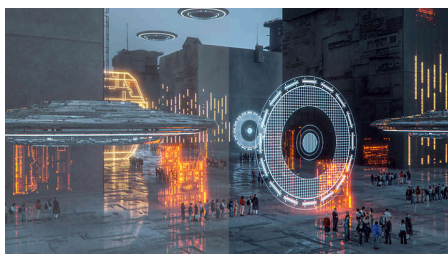
## Highlights

### EasySelect Menu Toggle Key



The discreetly placed EasySelect Menu Toggle Key allows you to make quick and easy adjustments to monitor settings in the On-Screen Display menu.

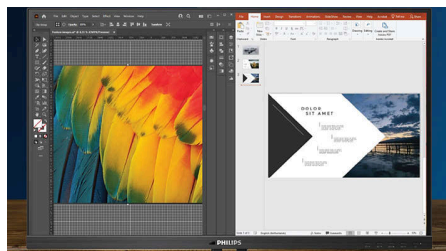
### SmartImage Game mode



The new Philips gaming display has quick access OSD fine tuned for gamers, offering you multiple options. "FPS" mode (First person shooting) improves dark themes in games, allowing you to see hidden objects in dark areas. "Racing" mode adapts display with fastest response time, high color, along with image adjustments. "RTS" mode

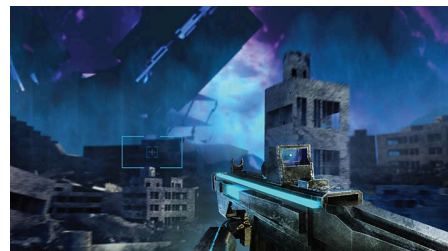
(Real time strategy) has a special SmartFrame mode which enables highlighting of specific area and allows for size and image adjustments. Gamer 1 and Gamer 2 enable you to save personal customized settings based on different games, ensuring best performance.

### MultiView technology



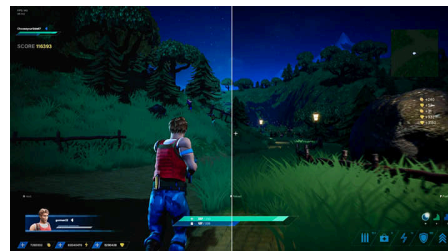
With the ultra-high resolution Philips MultiView display you can now experience a world of connectivity. MultiView enables active dual connect and view so that you can work with multiple devices like a PC and notebook simultaneously, for complex multi-tasking.

### Smart Crosshair



Color of Crosshair is set by default. When Smart Crosshair is on, the color will change as complementary color to the background color. Smart Crosshair enhances the accuracy of aiming so you can spot the enemies more easily.

### ShadowBoost



This feature enhances dark scenes in a linear fashion. The ShadowBoost feature has three selectable levels that enhance overall brightness and ultimately provide beautiful picture quality with high contrast.



LowBlue Mode

# Specifications

## Picture/Display

**Panel Size:** 27"/68.5cm

**Aspect ratio:** 16:9

**LCD panel type:** IPS technology

**Backlight type:** W-LED system

**Pixel pitch:** 0.2331mm(H) x 0.2331mm(V)

**Brightness:** 350 cd/m<sup>2</sup>

**Display colors:** 1.07B (8bits+RFC)

**Color gamut (typical):** sRGB 98%, DCI-P3 95%, AdobeRGB 85%, DCI-P3 95%, NTSC 100%

**Contrast ratio (typical):** 1200:1

**SmartContrast:** Mega Infinity DCR

**Response time (typical):** 1 ms (Gray to Gray)\*

**Viewing angle:** 178° (H) / 178° (V), @ C/R > 10

**Picture enhancement:** SmartImage game

**Maximum resolution:** 2560 x 1440 @ 144Hz

(HDMI), 2560 x 1440 @ 300Hz (DP), 10bits, RGB/444 (for DP)

**Effective viewing area:** 596.736mm (H) x 335.664mm(V)

**Scanning Frequency:** HDMI: 30 - 222 kHz (H) / 23 - 144 Hz (V); DP: 30 - 441 kHz (H) / 48 - 300 Hz (V)

sRGB

**Delta E:** < 2 (sRGB)

**Flicker-free**

**Pixel Density:** 108 PPI

**LowBlue Mode**

**Display Screen Coating:** Anti-Glare, 3H, Haze 25%

**Low Input Lag**

**EasyRead**

**Adaptive sync**

**HDR:** HDR 400

**Smart Crosshair**

**Shadow Boost**

## Connectivity

**Signal Input:** HDMI 2.0 x 2, DisplayPort 1.4 x 1

**Sync Input:** Separate Sync

**Audio (In/Out):** Headphone out

**HDCP:** HDCP 1.4 (HDMI / DisplayPort), HDCP 2.3 (HDMI / DisplayPort)

**USB Hub:** USB-A only to the FW update

## Convenience

**Plug & Play Compatibility:** DDC/CI, Mac OS X, sRGB, Windows 11 / 10

**User convenience:** Power On/Off, Menu/OK, Input/Up, Game Mode/Down, SmartImage game/Back

**OSD Languages:** Brazil Portuguese, Czech, Dutch, English, Finnish, French, German, Greek,

Hungarian, Italian, Japanese, Korean, Polish, Portuguese, Russian, Spanish, Simplified Chinese, Swedish, Turkish, Traditional Chinese, Ukrainian

**Other convenience:** Kensington lock, VESA mount (100x100mm)

**MultiView:** PIP/PBP mode

**Ambiglow:** Halolight

## Stand

**Height adjustment:** 130 mm

**Pivot:** -/+ 90 degree

**Swivel:** -/+ 45 degree

**Tilt:** -5/20 degree

## Power

**Power supply:** Internal, 100-240VAC, 50-60Hz

**Off mode:** 0.3 W (typ.)

**On mode:** 40.6 W (typ.)

**Standby mode:** 0.5 W (typ.)

**Power LED indicator:** Operation - White, Standby mode- White (blinking)

## Dimensions

**Packaging in mm (WxHxD):** 780 x 504 x 230 mm

**Product without stand (mm):** 613.44 x 366.86 x 58.3 mm

**Product with stand(max height):** 613.44 x 537.6 x 257.15 mm

## Weight

**Product with packaging (kg):** 10.1 kg

**Product with stand (kg):** 5.9 Kg kg

**Product without stand (kg):** 4.52 Kg kg

## Operating conditions

**Altitude:** Operation: +12,000ft (3,658m), Non-operation: +40,000ft (12,192m)

**Temperature range (operation):** 0°C to 40 °C

**MTBF:** 30,000 (Excluded backlight) hour(s)

**Relative humidity:** 20%-80 %

**Temperature range (storage):** -20°C to 60 °C

## Sustainability

**Environmental and energy:** RoHS

**Recyclable packaging material:** 100 %

**Specific Substances:** PVC / BFR free housing

## Compliance and standards

**Regulatory Approvals:** CCC, CECP, CEL

