

PHILIPS



DUAL MODE gaming
monitor

Fast IPS Gaming
monitor

Evnia 5000

27" (68.5 cm)

3840 x 2160 (4K UHD)

1920 x 1080 (Full HD)



27M2N5800

Your gaming experience to the utmost

Unlock next-level gaming with this Evnia monitor's Dual Mode. Seamlessly switch between 3840 x 2160 @ 160Hz and 1920 x 1080 @ 320Hz with a simple toggle for unmatched versatility and performance.

Features designed for gamers needs

- Stark ShadowBoost: for enhancing visibility in dark scenes
- Smart Sniper: for zooming in on targets
- Evnia Precision Center: Maximize Your Gaming Experience
- Smart MBR: for reducing motion blur.
- SmartImage game mode optimized for gamers
- MultiView enables simultaneous dual connection and view
- LowBlue mode and Flicker-free easy-on-the eyes viewing
- Smart Crosshair: for better aim and more fun
- Smart MBR Sync: for smooth yet dynamic gameplay

Built for fast action

- Dual Mode: The flexibility to match your gameplay
- 320Hz refresh rates for silky-smooth and vivid ima
- 0.5 ms ultra-fast speed for crisp image and smooth gameplay

Immersive visuals

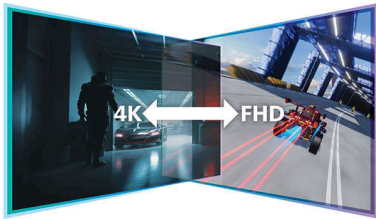
Fast IPS Gaming monitor

DUAL MODE gaming monitor

27M2N5800/69

Highlights

Dual Mode



Experience the best of both worlds with Dual Mode. Seamlessly toggle between 3840 x 2160 @ 160Hz for stunning clarity and 1920 x 1080 @ 320Hz for ultra-smooth gameplay. Whether you crave breathtaking visuals or high-speed action, this monitor adapts to your needs in an instant.

320Hz fast refresh



Experience the ultimate edge in intense, competitive gaming with the Philips Evnia monitor. Designed for gamers who demand ultra-smooth, lag-free visuals, this monitor delivers a 320Hz refresh rate—way faster than standard displays. Say goodbye to frustrating frame drops that make enemies jump unpredictably on the screen. With this high-performance display, you'll see every critical movement in ultra-smooth motion, giving you the precision and clarity to stay ahead of the competition and take your shot with confidence.

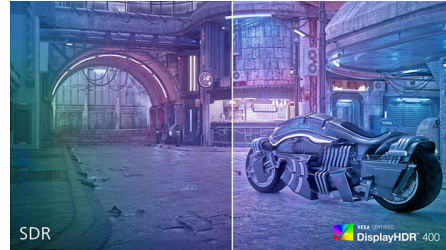
0.5 ms Smart MBR fast response



Philips Evnia with 0.5 ms Smart MBR effectively eliminates smearing and motion blur, delivers sharper and precise visuals to enhance gaming experience. Fast-moving action and dramatic

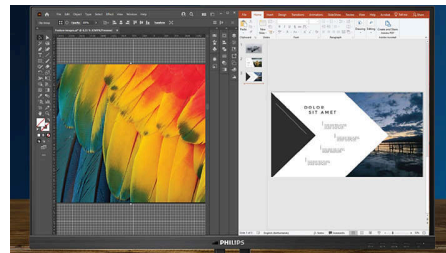
transitions will be rendered smoothly. Best choice for playing thrilling and twitch-sensitive games.

DisplayHDR 400



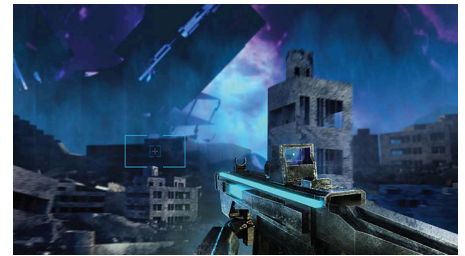
VESA-certified DisplayHDR 400 delivers a significant step-up from normal SDR displays. Unlike other 'HDR compatible' screens, true DisplayHDR 400 produces astonishing brightness, contrast and colors. With global dimming and minimum 400 nits brightness, images come to life with notable highlights while featuring deeper, more nuanced blacks. It renders a fuller palette of rich new colors, delivering a visual experience that engages your senses.

MultiView technology



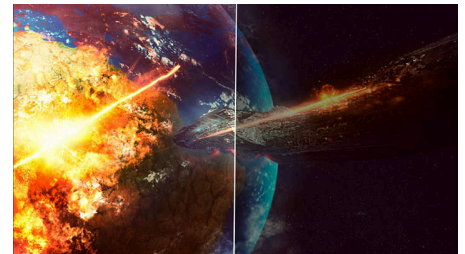
With the ultra-high resolution Philips MultiView display you can now experience a world of connectivity. MultiView enables active dual connect and view so that you can work with multiple devices like a PC and notebook simultaneously, for complex multi-tasking.

Smart Crosshair



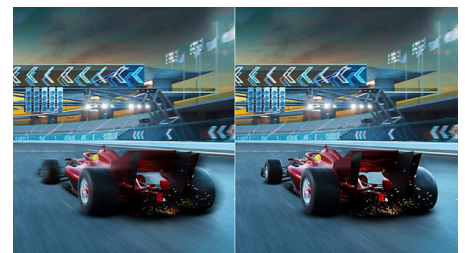
Color of Crosshair is set by default. When Smart Crosshair is on, the color will change as complementary color to the background color. Smart Crosshair enhances the accuracy of aiming so you can spot the enemies more easily.

Stark ShadowBoost



This feature enhances dark scenes without overexposing lightened areas. The Stark Shadowboost feature has three selectable levels that offer texturized images with better color saturation with higher contrast so you can see better in both light and dark environments. In addition, this feature helps you fine-tune your sight so that enemies get exposed more quickly when gaming.

Smart MBR



In an effort to reduce motion blur, this monitor's LED backlight will work simultaneously with the refresh rate to control brightness levels for the best picture clarity. Please note that Smart MBR is a type of gaming mode and it is recommended to turn the function off when not gaming as it may cause screen-flickering.



Fast IPS Gaming monitor

DUAL MODE gaming monitor

27M2N5800/69

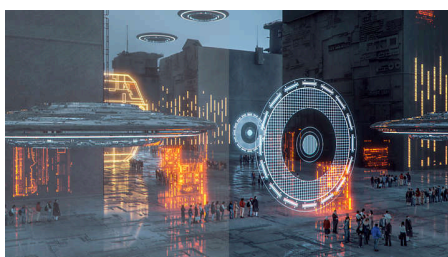
Highlights

Smart Sniper



This feature enables you to zoom in to multiple targets at once; ultimately making it easier to aim and hit your enemies.

SmartImage Game mode



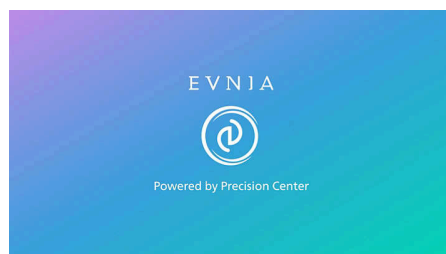
The new Philips gaming display has quick access OSD fine tuned for gamers, offering you multiple options. "FPS" mode (First person shooting) improves dark themes in games, allowing you to see hidden objects in dark areas. "Racing" mode adapts display with fastest response time, high color, along with image adjustments. "RTS" mode (Real time strategy) has a special SmartFrame mode which enables highlighting of specific area and allows for size and image adjustments. Gamer 1 and Gamer 2 enable you to save personal customized settings based on different games, ensuring best performance.

LowBlue mode & Flicker-free



Our LowBlue Mode and Flicker-free technology have been developed to reduce eye strain and fatigue often caused by long hours in front of a monitor.

Evnia Precision Center



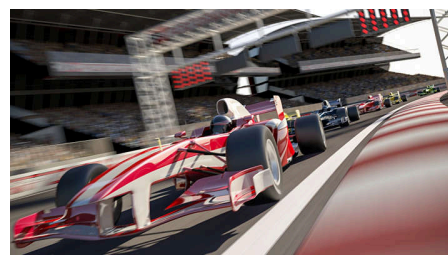
Evnia Precision Center is an easy-to-use software designed to optimize and personalize your Evnia monitor. Whether you're a casual or competitive gamer, it offers a wide range of customization options to match your unique gaming style. With intuitive controls and seamless navigation, Evnia Precision Center gives you full control, providing everything you need to elevate your gaming to the next level—right at your fingertips.

NVIDIA® G-SYNC® compatible



When playing intense games with high refresh rates, screen tearing may appear without optimal graphics synchronization. This Philips display is certified as NVIDIA® G-SYNC® compatible, reducing screen tearing and syncing your monitor's refresh rate with your graphic card's output for a smoother gaming experience. Scenes appear instantly, objects look sharper, and gameplay is smooth, giving you a stunning visual experience and a serious competitive edge.

Smart MBR Sync



This feature pairs MPRT together with Adaptive Sync technology; which effectively eliminates motion blur and ghosting on screen. Sharp and speedy gaming visuals are guaranteed, even at high frame rates.



Specifications

Picture/Display

Panel Size: 27 inch / 68.5 cm
 Aspect ratio: 16:9
 LCD panel type: Fast IPS
 Backlight type: W-LED system
 Pixel pitch: 0.1554 x 0.1554m
 Brightness: 350(SDR) cd/m², 450(HDR On) cd/m²
 Display colors: 1.07B (8bits @UHD 160Hz/FHD 320Hz; 10bits @ UHD120Hz/FHD 240Hz)
 Color gamut (typical): Adobe RGB 90%; DCI-P3:95%, sRGB: 130%, NTSC 110%*
 Contrast ratio (typical): 1000:1
 SmartContrast: Mega Infinity DCR
 Response time (typical): 1 ms (Gray to Gray)*
 Viewing angle: 178° (H) / 178° (V), @ C/R > 10
 Picture enhancement: SmartImage game
 Maximum resolution: 3840x2160@160 Hz (HDMI/DP), 1920x1080@320Hz (HDMI/DP)
 Effective viewing area: 596.16(H)x335.34(V)mm
 Scanning Frequency: 30KHz~360KHz(H) / 48-160Hz(V) (@3840 x 2160) / 48-320Hz (V) (@1920 x 1080)
 sRGB
 Delta E: < 2 (sRGB)
 Flicker-free
 Pixel Density: 163PPI
 LowBlue Mode
 Display Screen Coating: Anti-Glare, 3H, Haze 25%
 SmartUniformity: 93~105%
 Low Input Lag
 EasyRead
 Adaptive sync
 G-SYNC
 HDR: DisplayHDR 400 certified
 Smart Sniper
 Shadow Boost
 Smart MBR Sync
 Stark Shadow Boost
 Smart MBR: 0.5ms*
 Smart Crosshair

Connectivity

Signal Input: HDMI 2.1 x 2, DisplayPort 1.4 x 1
 Sync Input: Separate Sync
 Audio (In/Out): Headphone out
 HDCP: HDCP 1.4 (HDMI / DP), HDCP 2.3 (HDMI / DP)
 USB Hub: USB3.2, Gen1, 5G, .upstream: USB-B x1, Downstream: USB-A x2 (with x1 FC)

Convenience

Plug & Play Compatibility: DDC/CI, Mac OS X, sRGB, Windows 11 / 10
 User convenience: Power On/Off, Menu/OK, Input/Up, Dual Resolution/Down, SmartImage game/Back
 OSD Languages: Brazil Portuguese, Czech, Dutch, English, Finnish, French, German, Greek, Hungarian, Italian, Japanese, Korean, Polish, Portuguese, Russian, Spanish, Simplified Chinese, Swedish, Turkish, Traditional Chinese, Ukrainian
 Other convenience: Kensington lock, VESA mount (100x100mm), LowBlue Mode
 Control software: Evnia Precision Center
 MultiView
 Low blue light

Stand

Height adjustment: 130 mm
 Pivot: -/+ 90 degree
 Swivel: -/+ 30 degree
 Tilt: -5/20 degree

Power

Power supply: 100-240VAC, 50-60Hz, Internal
 Off mode: 0.3 W (typ.)
 On mode: 28.2 W (typ.)
 Standby mode: 0.5 W (typ.)
 Power LED indicator: Operation - White, Standby mode- White (blinking)

Dimensions

Packaging in mm (WxHxD): 730 x 455 x 139 mm
 Product without stand (mm): 614 x 368 x 60 mm
 Product with stand(max height): 614 x 519 x 261 mm

Weight

Product with packaging (kg): 9.04 kg
 Product with stand (kg): 6.32 kg
 Product without stand (kg): 4.55 kg

Operating conditions

Altitude: Operation: +12,000ft (3,658m), Non-operation: +40,000ft (12,192m)
 Temperature range (operation): 0°C to 40 °C
 MTBF: 50,000 (Excluded backlight) hour(s)
 Relative humidity: 20%-80 %
 Temperature range (storage): -20°C to 60 °C

Sustainability

Environmental and energy: RoHS
 Recyclable packaging material: 100 %
 Specific Substances: PVC / BFR free housing
 Post consumer recycled plastics: 85%*

Compliance and standards

Regulatory Approvals: CB, CE Mark, PSB, CEL, CCC, CECP, BSMI, UKCA, EMF, FCC, ICES-003

Cabinet

Color: Dark Slate
 Finish: Textured



* "IPS" word mark / trademark and related patents on technologies belong to their respective owners.
 * For best output performance, please always ensure that your graphic card is capable of achieving the maximum resolution and refresh rate of this Philips display.
 * Response time value equal to SmartResponse
 * Smart MBR is to adjust brightness for blur reduction, so cannot adjust brightness while smart MBR is turned on. To reduce motion blur, LED backlight will strobe synchronously with screen refresh, which may cause noticeable brightness change.
 * Smart MBR is gaming-optimized mode. Turn on Smart MBR may cause noticeable screen flickering. It is recommended to turn off when you are not using the gaming function.
 * Adobe RGB and DCI-P3 Coverage based on CIE1976, sRGB Area based on CIE1931, NTSC Area based on CIE1976.
 * This monitor strives for sustainability: the stand's feet are made with 35% recycled plastic and monitor's chassis is made up of 85% post-consumer recycled plastic.
 * The monitor may look different from feature images.
 * The products and accessories listed on this leaflet may differ by country and region.
 * NVIDIA® G-SYNC® support interface: DisplayPort
 * Make sure to update NVIDIA® G-SYNC® driver to the latest version, see more information on NVIDIA website: <https://www.nvidia.com/>
 * Make sure your graphic card supports NVIDIA® G-SYNC®