

PHILIPS



Face + Body

OneBlade

Trim, edge and shave

For any length of hair

1 x Blade for Face, 1 x Blade for Body

3 x click-on stubble combs (1,3,5 mm), click-on skin protector, click-on body comb



QP1624/10

Trim, edge and shave any length of hair

Designed to cut hair, not skin

The Philips OneBlade is a revolutionary new hybrid styler that can trim, shave and create clean lines and edges, on any length of hair. Forget about using multiple steps and tools. OneBlade does it all.

Easy to use

- Dual-sided blade: designed for precision and control
- Blade that doesn't fade easy
- Click-on body comb (3 mm)
- Charge anytime, anywhere
- Click-on skin guard for sensitive areas
- Fully waterproof
- Long lasting battery

Comfortable shave

- Unique OneBlade Technology
- Shave it off

Sharp edges

- Edge it up

Even trim

- Trim it down

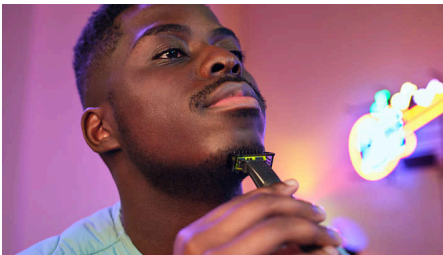
Highlights

Unique OneBlade Technology



Philips OneBlade has a revolutionary technology designed for facial grooming. It can shave any length of hair. Its dual protection system - a glide coating combined with rounded tips - makes shaving easier and comfortable. Its shaving technology features a fast-moving cutter (6000x per min) so it's efficient - even on longer hairs.

Trim it down (3 combs)



Trim your beard to a precision stubble length with one of the included 3 stubble combs: 1mm for a 5 o'clock, 3mm for a tight trim, and 5mm for a long stubble.

Edge it up



Create precise edges with the dual-sided blade. You can shave in either direction to get great visibility and see every hair that you're cutting. Line up your style in seconds!

Shave it off (Face)



OneBlade doesn't shave as close as a traditional blade - so your skin stays comfortable. Go against the grain and shave off any length of hair easily.

Dual-sided blade



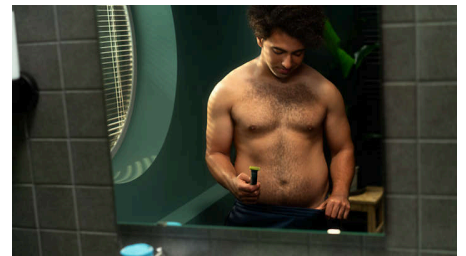
OneBlade follows the contours of your face, allowing you to easily and comfortably shave all areas. Use the dual-sided blade to style your edges and create clean lines by moving the blade in any direction.

Click-on skin guard



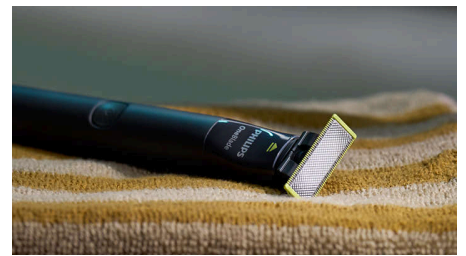
Attach the skin guard for an extra layer of protection on sensitive areas.

Click-on body comb



Attach the body comb (3 mm) for an easy trim in any direction.

Blade that doesn't fade easy



Durable stainless steel blade that lasts up to 4 months of use* to keep that fresh feel. When the replacement indicator - eject icon - will appear on the blade, the blade performance may no longer be optimal. It is time to consider changing the blade for the best shaving experience.

Highlights

USB-A charging



Can be charged at home or on the road, perfect for your daily routine and for travel.

Wet & dry



OneBlade is fully waterproof (IPX7), so it is easy to clean: just rinse it under the tap. You can shave wet or dry, even in the shower - whichever you prefer. No shaving foam needed.

Long lasting battery



Rechargeable NimH battery delivers 30 minutes of constant shaving power after an 8 hour charge.

Specifications

Trimming & shaving performance

Shaving system: Contour-following technology,
Original Blade, Dual protection system

Trimming system: Contour-following technology

Accessories

Maintenance: Protection cap

Comb: 3 click-on stubble combs (1, 3, 5mm)

Extra replaceable blade

1 click-on skin guard

1 click-on body comb

Power

Automatic voltage: 5 V

Run time: 30 minutes

Charging: 8 hours full charge

Battery type: Ni-MH

Max power consumption: 0.5 W

USB-A

Design

Color: Charcoal gray

Handle: Ergonomic grip & handling

Service

Replacement head: QP210, QP220, QP230,

Replace every 4 months*

2-year warranty

Ease of use

Charging: Rechargeable

Wet & Dry

