

PHILIPS

LCD monitor

Business Monitor

3000 series

27" (68.5 cm)

2560 x 1440 (Quad HD)

27B2N3500J



Redefining workflow productivity

Speed through daily tasks in comfort with this monitor's SoftBlue technology, Quad HD resolution and 120 Hz refresh rate. Additionally, SmartErgoBase adds an ergonomic touch to the monitor's feature list.

Excellent performance

- IPS technology for full colours and wide viewing angles

Designed for the way you work

- Built-in stereo speakers for multimedia
- SmartErgoBase enables user-friendly ergonomic adjustments
- Eyesafe-certified blue light protection and colour accuracy
- Less eye fatigue with Flicker-Free technology
- EasyRead mode for a paper-like reading experience
- SoftBlue Technology: for comfortable viewing

Easy to experience

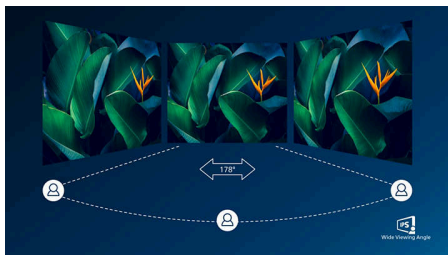
- VESA mount for convenience
- HDMI ensures universal digital connectivity

Superb Picture Quality

- 120 Hz refresh rates for ultra-smooth images
- Crystal clear images with Quad HD 2560 x 1440 pixels

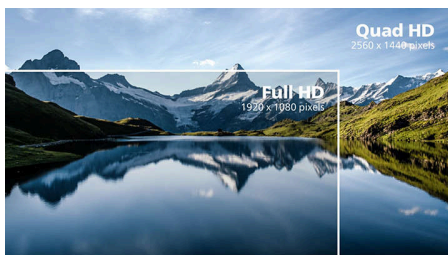
Highlights

IPS technology



IPS displays use advanced technology that gives you extra-wide viewing angles of 178/178 degrees, making it possible to view the display from almost any angle — even in 90-degree Pivot mode! Unlike standard TN panels, IPS displays gives you remarkably crisp images with vivid colours, making it ideal not only for Photos, films and web browsing, but also for professional applications that demand colour accuracy and consistent brightness at all times.

CrystalClear images



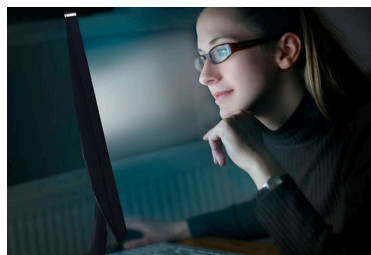
These Philips screens deliver CrystalClear, Quad HD 2560 x 1440 or 2560 x 1080 pixel images. Utilising high performance panels with a high-density pixel count enabled by high bandwidth sources, these new displays will make your images and graphics come alive. Whether you are a demanding professional requiring extremely detailed information for CAD-CAM solutions using 3D graphic applications, or a financial wizard working on huge spreadsheets, Philips displays will give you CrystalClear images.

120 Hz fast refresh



For gaming and video performance, you demand display with lag free, ultra-smooth images. This Philips display redraws the screen image up to 120 times per second, much faster than a standard display. A lower frame rate can make enemies appear to jump from spot to spot on the screen, making them difficult targets to hit. With 120 Hz frame rate, you get those critical missing images on the screen which shows enemy movement in ultra-smooth motion so you can easily target them.

SoftBlue Technology



SoftBlue LED technology, combined with the monitor's low blue light panel, is an effective solution for reducing the adverse health effects caused by high exposure to blue light. In this monitor's panel, the ratio of light is reduced by nearly 50 percent, while the SoftBlue LED technology works simultaneously by reducing harmful blue light rays emitted from the screen. Furthermore, the SoftBlue LED technology is tested and certified by TUV Rheinland Eyesafe® for its effectiveness in reducing blue light emissions.

Built-in stereo speakers



A pair of high-quality stereo speakers built into a display device. They may be visible front firing, or invisible down firing, top firing, rear firing etc. depending on model and design.

Flicker-Free technology



Due to the way brightness is controlled on LED-backlit screens, some users experience flicker on their screen which causes eye fatigue. Philips Flicker-Free technology applies a new solution to regulate brightness and reduce flicker for more comfortable viewing.

EasyRead mode



EasyRead mode for a paper-like reading experience



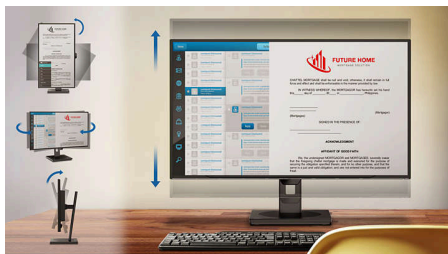
Highlights

TUV Rheinland Eyesafe - RPF[®] 40



Philips display meets the TUV Rheinland Eyesafe[®] standard to truly protect you from long exposure to blue light. The always-on blue light filter not only helps reduce digital eye strain, but also guarantees colour integrity.

SmartErgoBase



The SmartErgoBase is a monitor base that delivers ergonomic display comfort and provides cable management. The base can swivel, tilt and

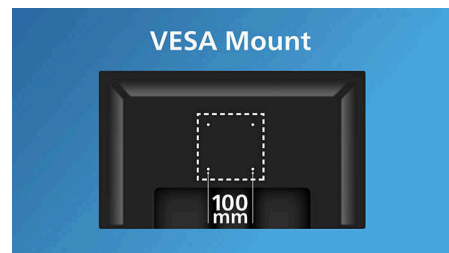
rotate to various angles to ensure maximum comfort. The height-adjustable stand guarantees the optimal viewing level, reducing the physical strains of a long workday, while cable management reduces cable clutter and keeps the workspace neat and professional.

HDMI Ready



An HDMI-ready device has all the required hardware to accept High-Definition Multimedia Interface (HDMI) input. An HDMI cable enables high-quality digital video and audio to be transmitted over a single cable from a PC or any number of AV sources (including set-top boxes, DVD players, A/V receivers and video cameras).

VESA mount for convenience



VESA mount for convenience



Specifications

Picture/Display

Panel Size: 27 inch/68.6 cm
Aspect ratio: 16:9
LCD panel type: IPS technology
Backlight type: W-LED system
Pixel pitch: 0.2331 x 0.2331 mm
Brightness: 350 cd/m²
Display colours: 16.7 M (true 8 bits)
Colour gamut (typical): sRGB 125%, NTSC 114%*
Contrast ratio (typical): 1500:1
SmartContrast: 50,000,000:1
Response time (typical): 4 ms (Grey to Grey)*
Viewing angle: 178° (H)/178° (V), @ C/R > 10
Picture enhancement: SmartImage
Maximum resolution: 2560 x 1440 @ 120 Hz
Effective viewing area: 596.74 (H) x 335.66 (V) mm
Scanning Frequency: 30-190 kHz (H)/48-120 Hz (V)
sRGB
SoftBlue
Flicker-free
Pixel Density: 109 PPI
LowBlue Mode
Display Screen Coating: Anti-Glare, 3H, Haze 25%
EasyRead
Adaptive sync
EyeSafe

Connectivity

Signal Input: HDMI 2.0 x 2, DisplayPort 1.2 x 1
Sync Input: Separate Sync, Sync on Green
Audio (In/Out): Audio out
HDCP: HDCP 1.4 (HDMI/DisplayPort), HDCP 2.2 (HDMI/DisplayPort)
USB Hub: USB3.2, Gen1, 5G, Upstream: USB-B x 1; Downstream: USB-A x 4 (with x 1 fast-charge B.C 1.2)

Convenience

Built-in Speakers: 2 W x 2
Plug and Play Compatibility: DDC/CI, Mac OS, sRGB, Windows 11/10
User convenience: SmartImage, Input, Brightness, Menu, Power On/Off
OSD Languages: Brazil Portuguese, Czech, Dutch, English, French, Finnish, German, Greek, Hungarian, Italian, Japanese, Korean, Portuguese, Polish, Russian, Simplified Chinese,

Spanish, Swedish, Traditional Chinese, Turkish, Ukrainian
Other convenience: Kensington lock, VESA mount (100 x 100 mm)
Control software: SmartControl

Stand

Height adjustment: 150 mm
Pivot: -/+90 degree
Swivel: -/+ 180 degree
Tilt: -5/30 degree

Power

ECO mode: 6.1 W (typ.)
Power supply: Built-in, 100–240 VAC, 50–60 Hz
Off mode: 0.3 W (typ.)
On mode: 11.28 W (typ.) (Energy Star test method)
Standby mode: 0.3 W (typ.)
Power LED indicator: Operation - White, Standby mode - White (flashing)
Energy Label Class: C

Dimensions

Packaging in mm (W x H x D):
 730 x 445 x 139 mm
Product without stand (mm): 615 x 361 x 46 mm
Product with stand (max height):
 615 x 539 x 146 mm

Weight

Product with packaging (kg): 9.12 kg
Product with stand (kg): 6.23 kg
Product without stand (kg): 4.56 kg

Operating conditions

Altitude: Operation: +12,000 ft (3658 m), Non-operation: +40,000 ft (12,192 m)
Temperature range (operation): 0°C to 40 °C
Relative humidity: 20%-80 %
Temperature range (storage): -20°C to 60 °C
MTBF (demonstrated): 70,000 hrs (excluded backlight)

Sustainability

Environmental and energy: Energy Star, EPEAT*, RoHS
Post-consumer recycled plastic: 85%
Recyclable packaging material: 100 %
Specific Substances: PVC/BFR free housing

Compliance and standards

Regulatory Approvals: CB, CE Mark, TUV/GS, TUV Ergo, TCO Certified, EAC, EAC ROHS, UKCA, EMF, FCC, ICES-003, TÜV Rheinland Low Blue Light (Hardware Solution), eyesafe® CERTIFIED 2.0

Cabinet

Finish: Texture
Foot: Black
Front bezel: Black
Rear cover: Black

What's in the box?

Cables: HDMI cable, DisplayPort cable, Power cable
Monitor with stand
User Documentation



* "IPS" word mark / trademark and related patents on technologies belong to their respective owners.

* Response time value equal to SmartResponse

* sRGB area based on CIE 1931; NTSC area based on CIE 1976

* EPEAT rating is valid only where Philips registers the product. Please visit <https://www.epeat.net/> for registration status in your country.

* The products and accessories listed on this leaflet may differ by country and region.

* The monitor may look different from feature images.