



PHILIPS

Improving diagnostic workflows at the Heart Hospital of New Mexico

How the Philips X11-4t mini 3D TEE enhances care for more patients

Challenges in cross-functional care coordination

The Heart Hospital of New Mexico stands as a beacon of cardiovascular care in the state. Its advanced facilities include three operating rooms, two hybrid rooms, two cath labs and three EP rooms, allowing the hospital to address a broad spectrum of cardiac conditions.

Despite its state-of-the-art facilities, the hospital faced significant challenges in coordinating cross-functional services for outpatient transesophageal echocardiography (TEE), a common problem across the U.S. healthcare system. This coordination is crucial for maintaining workflow efficiency and can help ensure patient well-being.

The hospital's Chief of Anesthesia, Dr. Daniel Berson, plays a pivotal role in enhancing the diagnostic ultrasound capabilities within the institution. Recognizing the significance of addressing these challenges, he leveraged his extensive experience to find a solution.

“ Coordinating cardiology, echo, sonographer, procedure rooms and anesthesia services for outpatient TEEs is an absolute nightmare. The X11-4t may contribute to lower levels of sedation in some procedures, and thus, better workflow.”

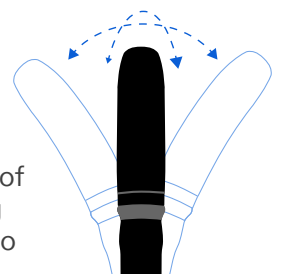
Advancing ultrasound capabilities for diverse patient needs

The hospital needed an innovative tool that could manage the complexities of their workflows and patient needs. So began a collaboration with Philips to develop and adopt the X11-4t mini 3D TEE probe.

The Philips X11-4t mini 3D TEE was integrated into the hospital's diagnostic procedures, offering a miniaturized yet fully functional tool with full articulation capabilities. This technology was specifically designed to enhance diagnostic efficiency and comfort for patients of all ages and sizes, from pediatric and geriatric.

“ From the first moment I was able to handle the X11-4t transducer, it was a natural fit. The TEE is easily manipulated in all four directions: anteflexion, retroflexion, right and left. Over the two years working with this probe, I have been able to intubate patients of all shapes and sizes with zero difficulty.”

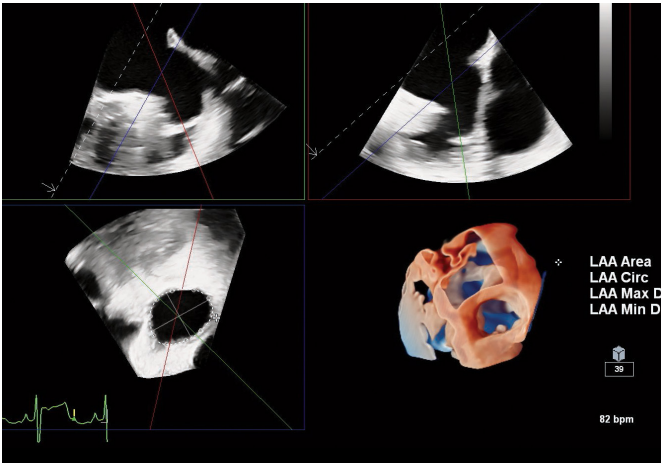
Philips provided support during the initial implementation of the X11-4t, helping hospital staff to quickly gain proficiency with the device. Designed for intuitive use, the probe's handling matches that of the previous Philips X8-2t, allowing clinicians to easily incorporate it into their workflows without disrupting patient care.



Enhancing diagnostic accuracy and clinical workflows

The introduction of the Philips X11-4t mini 3D TEE probe has significantly improved diagnostic accuracy and patient throughput at the Heart Hospital of New Mexico. As of this writing, Dr. Berson has successfully used the probe on more than 79 patients, achieving diagnostic-level quality across a wide range of patient sizes and conditions.

“ The images are incredible — the TEE has excellent spatial and temporal resolution. I have full confidence with the X11-4t.”



Prior to the adoption of the X11-4t, the hospital struggled with lengthy setup times and coordination across multiple departments, leading to delayed diagnostics and increased patient discomfort. Post-implementation, these issues have been markedly reduced, enhancing overall care quality and patient satisfaction.



Discover innovative solutions through industry collaboration

The partnership between the Heart Hospital of New Mexico and Philips to implement the X11-4t mini 3D TEE probe has revolutionized the hospital's diagnostic capabilities. This collaboration has not only addressed the immediate challenges of workflow efficiency and patient comfort, but it has also set a new precedent in the use of advanced diagnostic technology in cardiac care.

“ The engineers at Philips have risen to the challenge. My greatest concern with the smaller TEE was how to achieve an adequate contact for gastric and deep gastric images and Doppler measurements. From 50 kilograms up to 150 kilograms, these views were easily obtained, making the X11-4t a complete success.”

For other institutions facing similar challenges in diagnostic ultrasound, exploring the Philips X11-4t mini 3D TEE probe could be the key to unlocking enhanced imaging confidence and efficiency.

Learn more about how this innovative solution can help transform your cardiology practice by contacting a Philips representative today.

