

# PHILIPS

Full HD gaming  
monitor

Curved Fast VA  
Gaming monitor

Evnia 5000

27" (68.5 cm)

1920 x 1080 (Full HD)

27M2C5200W



## Your gaming experience to the utmost

This Fast VA monitor is made for gamers with a need for speed. Its 280Hz refresh rate and 0.3ms Smart MBR make this monitor the ideal enabler for spotting targets and running through scenarios.

### Features designed for gamers needs

- SmartImage game mode optimized for gamers
- Tilt, swivel and height-adjust for an ideal viewing position
- LowBlue mode and Flicker-free easy-on-the eyes viewing
- EasySelect menu toggle key for quick on-screen menu access
- Smart Crosshair: for better aim and more fun

### Built for fast action

- 0.3 ms ultra-fast speed for crisp image and smooth gameplay
- Fast VA Panel: For sharp imagery at high frame rates
- Low input lag reduces time delay between devices to monitor
- 280Hz trail-blazing refresh rate for smoothest gameplay

### Immersive visuals

- 16:9 Full HD display for crisp detailed images
- High Dynamic Range (HDR) for more lifelike colorful visuals
- SmartContrast for rich black details

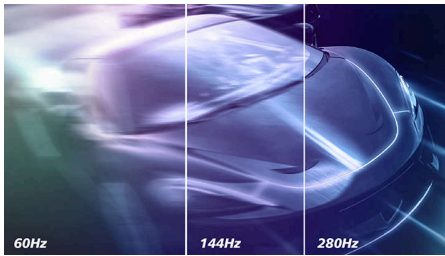
# Curved Fast VA Gaming monitor

Full HD gaming monitor

27M2C5200W/75

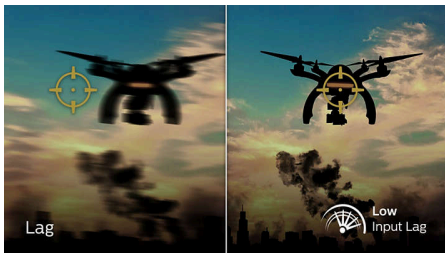
## Highlights

### Accelerated 280Hz refresh rate



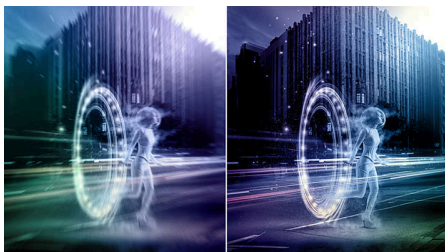
Philips Evnia 280 Hz display takes your gaming experience to new dimensions. The low input lag coupled with variable refresh rate technology gives you an Immersive gaming advantage. Plus, our wide view angle panel with high resolution provides a realistic gaming experience with unsurpassed color accuracy. Focus on what matters as adjustable stand gives the comfort you deserve and flicker-free gives an easy viewing, so you continue gaming without health worries.

### Low input lag



Input lag is the amount of time that elapses between performing an action with connected devices and seeing the result on screen. Low input lag reduces the time delay between entering a command from your devices to monitor, greatly improve on playing twitch-sensitive video games, particularly important to whom plays fast-paced, competitive games.

### 0.3 ms Smart MBR fast response



Philips display with 0.3 ms Smart MBR effectively eliminates smearing and motion blur, delivers shaper and precise visuals to enhance gaming

experience. Fast-moving action and dramatic transitions will be rendered smoothly. Best choice for playing thrilling and twitch-sensitive games.

### Fast VA



This feature is made for action-packed gameplay. Not only does it produce virtually blur-free gaming, but it also pairs well with high frame rates for the best and sharpest imagery, guaranteed.

### Curved display design



Desktop monitors offer a personal user experience, which suits a curve design very well. The curved screen provides a pleasant yet subtle immersion effect, which focuses on you at the center of your desk.

### 16:9 Full HD display



Picture quality matters. Regular displays deliver quality, but you expect more. This display features enhanced Full HD 1920 x 1080 resolution. With Full HD for crisp detail paired with high brightness, incredible contrast and realistic colors expect a true to life picture.

### High Dynamic Range (HDR)



High Dynamic Range delivers a dramatically different visual experience. With astonishing brightness, incomparable contrast and captivating color, images come to life with much greater brightness while also featuring much deeper, more nuanced darks. It renders a fuller palette of rich new colors never before seen on display, giving you a visual experience that engages your senses and inspires emotions.

### SmartContrast



SmartContrast is a Philips technology that analyzes the contents you are displaying, automatically adjusting colors and controlling backlight intensity to dynamically enhance contrast for the best digital images and videos or when playing games where dark hues are displayed. When Economy mode is selected, contrast is adjusted and backlighting fine-tuned for just-right display of everyday office applications and lower power consumption.



# Curved Fast VA Gaming monitor

Full HD gaming monitor

27M2C5200W/75

## Highlights

### LowBlue mode & Flicker-free



Our LowBlue Mode and Flicker-free technology have been developed to reduce eye strain and fatigue often caused by long hours in front of a monitor.

### SmartImage Game mode



The new Philips gaming display has quick access OSD fine tuned for gamers, offering you multiple options. "FPS" mode (First person shooting) improves dark themes in games, allowing you to see hidden objects in dark areas. "Racing" mode adapts display with fastest response time, high

color, along with image adjustments. "RTS" mode (Real time strategy) has a special SmartFrame mode which enables highlighting of specific area and allows for size and image adjustments. Gamer 1 and Gamer 2 enable you to save personal customized settings based on different games, ensuring best performance.

### Compact Ergo Base



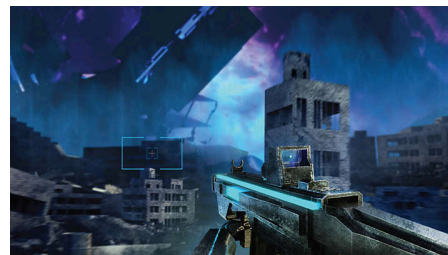
The Compact Ergo Base is a people-friendly Philips monitor base that tilts, swivels and height-adjusts so each user can position the monitor for maximum viewing comfort and efficiency.

### EasySelect Menu Toggle Key



The discreetly placed EasySelect Menu Toggle Key allows you to make quick and easy adjustments to monitor settings in the On-Screen Display menu.

### Smart Crosshair



Color of Crosshair is set by default. When Smart Crosshair is on, the color will change as complementary color to the background color. Smart Crosshair enhances the accuracy of aiming so you can spot the enemies more easily.



Game



Low Input Lag



Fast Response 0.3ms



Fast VA



CurvedDisplay



Full HD 1080p

# Curved Fast VA Gaming monitor

Full HD gaming monitor

27M2C5200W/75

## Specifications

### Picture/Display

**Panel Size:** 27 inch / 68.5 cm  
**Aspect ratio:** 16:9  
**LCD panel type:** VA LCD  
**Backlight type:** W-LED system  
**Pixel pitch:** 0.3114 x 0.3114 mm  
**Brightness:** 300 cd/m<sup>2</sup>  
**Display colors:** 1.07B (10bits)\*  
**Color gamut (typical):** DCI-P3:92%, sRGB: 121%, NTSC 108%, Adobe RGB 105%\*  
**Contrast ratio (typical):** 4000:1  
**SmartContrast:** Mega Infinity DCR  
**Response time (typical):** 1 ms (Gray to Gray)\*  
**Viewing angle:** 178° (H) / 178° (V), @ C/R > 10  
**Picture enhancement:** SmartImage game  
**Maximum resolution:** HDMI: 1920 x 1080 @ 180 Hz, DP: 1920 x 1080 @ 280 Hz  
**Effective viewing area:** 597.888 (H) x 336.312 (V) - at a 1500R curvature\*  
**Scanning Frequency:** HDMI: 30 - 200 kHz (H) / 48 - 180 Hz (V), DP: 30 - 320 kHz (H) / 48 - 280 Hz (V) sRGB  
**Delta E:** < 2 (sRGB)  
**Flicker-free**  
**Pixel Density:** 81.68 PPI  
**LowBlue Mode**  
**Display Screen Coating:** Anti-glare, 25%, 3H  
**SmartUniformity:** 93 ~ 105%  
**Low Input Lag**  
**EasyRead**  
**Adaptive sync**  
**HDR:** HDR 10 supported  
**Smart Crosshair**  
**Shadow Boost**  
**Smart MBR:** 0.3 ms\*

### Connectivity

**Signal Input:** HDMI 2.0 x 2, DisplayPort 1.4 x 1  
**Sync Input:** Separate Sync  
**Audio (In/Out):** Headphone out  
**HDCP:** HDCP 1.4 (HDMI / DisplayPort), HDCP 2.2 (HDMI / DisplayPort)

### Convenience

**Plug & Play Compatibility:** DDC/CI, Mac OS X, sRGB, Windows 11 / 10  
**User convenience:** Power On/Off, Menu/OK, Input/Up, Game Settings/Down, SmartImage game/Back  
**OSD Languages:** Brazil Portuguese, Czech, Dutch, English, Finnish, French, German, Greek, Hungarian, Italian, Japanese, Korean, Polish, Portuguese, Russian, Spanish, Simplified Chinese, Swedish, Turkish, Traditional Chinese, Ukrainian  
**Other convenience:** Kensington lock, VESA mount (100x100mm), LowBlue Mode

### Stand

**Height adjustment:** 130 mm  
**Swivel:** -/30 degree  
**Tilt:** -5/20 degree

### Power

**Power supply:** Internal, 100-240VAC, 50-60Hz  
**Off mode:** 0.3 W (typ.)  
**On mode:** 22.4 W (typ.)  
**Standby mode:** 0.5 W (typ.)  
**Power LED indicator:** Operation - White, Standby mode - White (blinking)

### Dimensions

**Packaging in mm (WxHxD):** 785 x 480 x 188 mm  
**Product without stand (mm):** 611 x 369 x 90 mm  
**Product with stand(max height):** 611 x 528 x 247 mm

### Weight

**Product with packaging (kg):** 9.15 kg  
**Product with stand (kg):** 5.79 kg  
**Product without stand (kg):** 3.97 kg

### Operating conditions

**Altitude:** Operation: +12,000ft (3,658m), Non-operation: +40,000ft (12,192m)  
**Temperature range (operation):** 0°C to 40 °C  
**MTBF:** 30,000 (Excluded backlight) hour(s)  
**Relative humidity:** 20%-80 %  
**Temperature range (storage):** -20°C to 60 °C

### Sustainability

**Environmental and energy:** RoHS  
**Recyclable packaging material:** 100 %  
**Post consumer recycled plastics:** 85%\*

### Compliance and standards

**Regulatory Approvals:** CB, TUV/ISO9241-307, TUV-BAUART, EAC, EAEU RoHS, CE Mark, UKCA, EMF, FCC, ICES-003

### Cabinet

**Color:** Dark Slate  
**Finish:** Textured



\* Radius of the arc of the display curvature in mm  
\* For best output performance, please always ensure that your graphic card is capable of achieving the maximum resolution and refresh rate of this Philips display.  
\* 10bits only can be reached by DP @ 240Hz.  
\* Response time value equal to SmartResponse  
\* Smart MBR is to adjust brightness for blur reduction, so cannot adjust brightness while Smart MBR is turned on. To reduce motion blur, LED backlight will strobe synchronously with screen refresh, which may cause noticeable brightness change.  
\* Smart MBR is gaming-optimized mode. Turn on Smart MBR may cause noticeable screen flickering. It is recommended to turn off when you are not using the gaming function.  
\* Adobe RGB and DCI-P3 Coverage based on CIE1976, sRGB Area based on CIE1931, NTSC Area based on CIE1976.  
\* This monitor strives for sustainability: the stand's feet and headphone holder are made with 35% recycled plastic and monitor's chassis is made up of 85% post-consumer recycled plastic.  
\* The products and accessories listed on this leaflet may differ by country and region.  
\* The monitor may look different from feature images.