

# PHILIPS



Quad HD gaming  
monitor

Fast IPS Gaming  
monitor

Evnia 3000

27" (68.5cm)

2560 x 1440 (Quad HD)



27M2N3500PA

## Broaden your gaming horizon

This 27-inch Fast IPS monitor brings sharp visuals to gaming. With its Ultra-fast 260Hz refresh rate and 0.3ms Smart MBR, you can expect clear visuals and a high-quality all-around gaming experience.

### Features designed for gamers needs

- Stark ShadowBoost: for enhancing visibility in dark scenes
- Evnia Precision Center: Maximize Your Gaming Experience
- Smart Sniper: for zooming in on targets
- Smart MBR: for reducing motion blur.
- Built-in stereo speakers for multimedia
- LowBlue mode and Flicker-free easy-on-the eyes viewing
- Smart Crosshair: for better aim and more fun
- SmartErgoBase enables people-friendly ergonomic adjustments

### Built for fast action

- 0.3 ms ultra-fast speed for crisp image and smooth gameplay
- Ultra-fast 260Hz refresh rate for virtually lag-free gaming
- Low input lag reduces time delay between devices to monitor

### Immersive visuals

- High Dynamic Range (HDR) for more lifelike colorful visuals

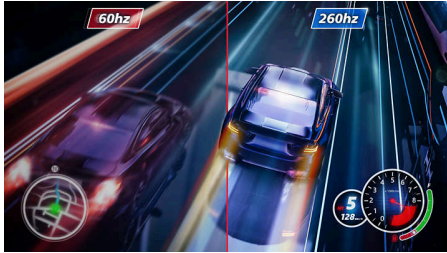
# Fast IPS Gaming monitor

Quad HD gaming monitor

27M2N3500PA/75

## Highlights

### Overclockable 260Hz refresh rate



While playing the most intense engaging action-oriented games, Philips Evnia offers an overclockable 260 Hz refresh rate that enhances an ultra-smooth, lag-free gaming experience. Especially for fast-paced games like FPS and racing games, it gives a superior motion and clarity visuals. You will experience deeper immersion and feeling alive in game.

### Low input lag



Input lag is the amount of time that elapses between performing an action with connected devices and seeing the result on screen. Low input lag reduces the time delay between entering a command from your devices to monitor, greatly improve on playing twitch-sensitive video games, particularly important to whom plays fast-paced, competitive games.

### 0.3 ms Smart MBR fast response



Philips display with 0.3 ms Smart MBR effectively eliminates smearing and motion blur, delivers sharper and precise visuals to enhance gaming

experience. Fast-moving action and dramatic transitions will be rendered smoothly. Best choice for playing thrilling and twitch-sensitive games.

### Crystalclear images



These Philips screens deliver Crystalclear, Quad HD 2560x1440 or 2560x1080 pixel images. Utilizing high performance panels with high density pixel count, enabled by high bandwidth sources, these new displays will make your images and graphics come alive. Whether you are demanding professional requiring extremely detailed information for CAD-CAM solutions, using 3D graphic applications or a financial wizard working on huge spreadsheets, Philips displays will give you Crystalclear images.

### High Dynamic Range (HDR)



High Dynamic Range delivers a dramatically different visual experience. With astonishing brightness, incomparable contrast and captivating color, images come to life with much greater brightness while also featuring much deeper, more nuanced darks. It renders a fuller palette of rich new colors never before seen on display, giving you a visual experience that engages your senses and inspires emotions.

### LowBlue mode & Flicker-free



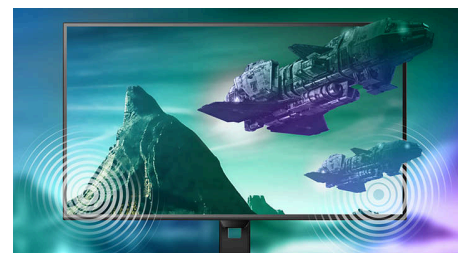
Our LowBlue Mode and Flicker-free technology have been developed to reduce eye strain and fatigue often caused by long hours in front of a monitor.

### SmartErgoBase



The SmartErgoBase is a monitor base that delivers ergonomic display comfort and provides cable management. The base can swivel, tilt and rotate to various angles to ensure maximum comfort. The height adjustable stand guarantees the optimal viewing level, reducing the physical strains of a long workday, while cable management reduces cable clutter and keeps the workspace neat and professional.

### Built-in stereo speakers



A pair of high quality stereo speakers built into a display device. It can be visible front firing, or invisible down firing, top firing, rear firing, etc depending on model and design.





# Fast IPS Gaming monitor

Quad HD gaming monitor

27M2N3500PA/75

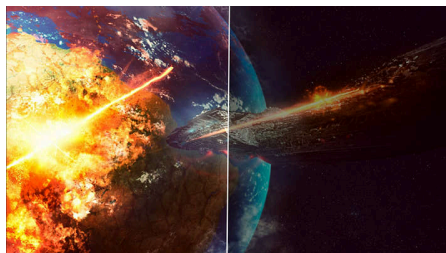
## Highlights

### SmartContrast



SmartContrast is a Philips technology that analyzes the contents you are displaying, automatically adjusting colors and controlling backlight intensity to dynamically enhance contrast for the best digital images and videos or when playing games where dark hues are displayed. When Economy mode is selected, contrast is adjusted and backlighting fine-tuned for just-right display of everyday office applications and lower power consumption.

### Stark ShadowBoost



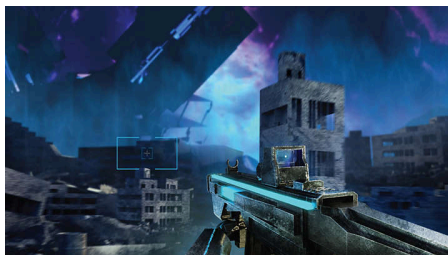
This feature enhances dark scenes without overexposing lightened areas. The Stark Shadowboost feature has three selectable levels that offer texturized images with better color saturation with higher contrast so you can see better in both light and dark environments. In addition, this feature helps you fine-tune your sight so that enemies get exposed more quickly when gaming.

### Smart Sniper



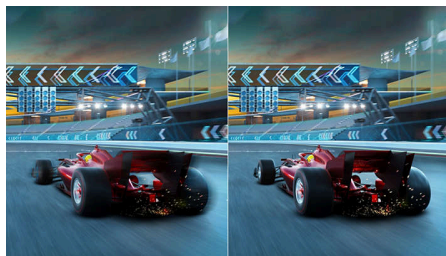
This feature enables you to zoom in to multiple targets at once; ultimately making it easier to aim and hit your enemies.

### Smart Crosshair



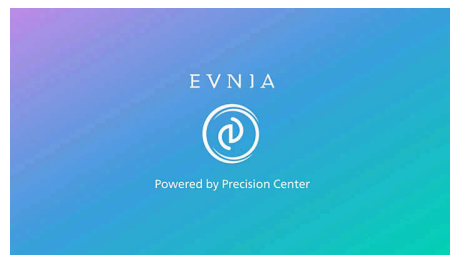
Color of Crosshair is set by default. When Smart Crosshair is on, the color will change as complementary color to the background color. Smart Crosshair enhances the accuracy of aiming so you can spot the enemies more easily.

### Smart MBR



In an effort to reduce motion blur, this monitor's LED backlight will work simultaneously with the refresh rate to control brightness levels for the best picture clarity. Please note that Smart MBR is a type of gaming mode and it is recommended to turn the function off when not gaming as it may cause screen-flickering.

### Evnia Precision Center



Evnia Precision Center is an easy-to-use software designed to optimize and personalize your Evnia monitor. Whether you're a casual or competitive gamer, it offers a wide range of customization options to match your unique gaming style. With intuitive controls and seamless navigation, Evnia Precision Center gives you full control, providing everything you need to elevate your gaming to the next level—right at your fingertips.



# Fast IPS Gaming monitor

Quad HD gaming monitor

27M2N3500PA/75

## Specifications

### Picture/Display

**Panel Size:** 27 inch / 68.5 cm  
**Aspect ratio:** 16:9  
**LCD panel type:** IPS technology  
**Backlight type:** W-LED system  
**Pixel pitch:** 0.2331 x 0.2331 mm  
**Brightness:** 300 cd/m<sup>2</sup>  
**Display colors:** 1.07B (8+FRC)  
**Color gamut (typical):** Adobe RGB 90%; DCI-P3:95%, sRGB: 120%, NTSC 105% \*  
**Contrast ratio (typical):** 1000:1  
**SmartContrast:** Mega Infinity DCR  
**Viewing angle:** 178° (H) / 178° (V), @ C/R > 10  
**Picture enhancement:** SmartImage game  
**SmartResponse:** 1 ms (Gray to Gray)\*  
**Maximum resolution:** 2560x1440 @ 260 Hz (by DP Overclock\*, 8bits), 2560x1440 @ 144Hz (HDMI, 8bits)  
**Effective viewing area:** 596.736(H)x335.664(V)mm  
**Scanning Frequency:** HDMI: 30 - 230 kHz (H) / 48 - 144 Hz (V); DP: 30 - 400 kHz (H) / 48 - 260 Hz (V) (Overclock)\*  
**sRGB**  
**Delta E:** <2 (sRGB)  
**Flicker-free**  
**Pixel Density:** 109 PPI  
**LowBlue Mode**  
**Display Screen Coating:** Anti-Glare, 3H, Haze 25%  
**SmartUniformity:** 93~105%  
**Low Input Lag**  
**EasyRead**  
**Adaptive sync**  
**HDR:** HDR 10 supported  
**Smart Sniper**  
**Smart MBR Sync**  
**Stark Shadow Boost:** Yes\*  
**Smart MBR:** 0.3ms\*  
**Smart Crosshair**  
**Shadow Boost**

### Connectivity

**Signal Input:** HDMI 2.0 x 2, DisplayPort 1.4 x 1  
**Sync Input:** Separate Sync  
**Audio (In/Out):** Headphone out  
**HDCP:** HDCP 1.4 (HDMI / DP), HDCP 2.3 (HDMI / DP)

### Convenience

**Built-in Speakers:** 2Wx2  
**Plug & Play Compatibility:** DDC/CI, Mac OS, sRGB, Windows 11 / 10  
**User convenience:** Power On/Off, Menu/OK, Input/Up, Game Settings/Down, SmartImage game/Back  
**OSD Languages:** Brazil Portuguese, Czech, Dutch, English, Finnish, French, German, Greek, Hungarian, Italian, Japanese, Korean, Polish, Portuguese, Russian, Spanish, Simplified Chinese, Swedish, Turkish, Traditional Chinese, Ukrainian  
**Other convenience:** Kensington lock, VESA mount (100x100mm), LowBlue Mode, Low blue light  
**Control software:** Evnia Precision Center

### Stand

**Height adjustment:** 130 mm  
**Pivot:** ±90 degree  
**Swivel:** -/+ 30 degree  
**Tilt:** -5/20 degree

### Power

**Power supply:** Internal, 100-240VAC, 50-60Hz  
**Off mode:** 0.3 W (typ.)  
**On mode:** 35.0 W (typ.)  
**Standby mode:** 0.5 W (typ.)  
**Power LED indicator:** Operation - White, Standby mode- White (blinking)

### Dimensions

**Packaging in mm (WxHxD):** 730 x 455 x 139 mm  
**Product without stand (mm):** 614 x 368 x 60 mm  
**Product with stand(max height):** 614 x 519 x 261 mm

### Weight

**Product with packaging (kg):** 8.39 kg  
**Product with stand (kg):** 5.66 kg  
**Product without stand (kg):** 3.88 kg

### Operating conditions

**Altitude:** Operation: +12,000ft (3,658m), Non-operation: +40,000ft (12,192m)  
**Temperature range (operation):** 0°C to 40 °C  
**MTBF:** 50,000 (Excluded backlight) hour(s)  
**Relative humidity:** 20%-80 %  
**Temperature range (storage):** -20°C to 60 °C

### Sustainability

**Environmental and energy:** RoHS  
**Recyclable packaging material:** 100 %  
**Post consumer recycled plastics:** 85%\*

### Compliance and standards

**Regulatory Approvals:** CB, CE Mark, MEPS, PSB, UKCA, EMF, ICES-003, FCC

### Cabinet

**Color:** Charcoal  
**Finish:** Textured



- \* The maximum resolution works for DP input only.
- \* For best output performance, please always ensure that your graphic card is capable of achieving the maximum resolution and refresh rate of this Philips display.
- \* Response time value equal to SmartResponse
- \* Adobe RGB and DCI-P3 Coverage based on CIE1976, sRGB Area based on CIE1931, NTSC Area based on CIE1976.
- \* Display colors: 10bits can be reached by DP@200Hz with QHD resolution
- \* The Overclock function increases the native refresh rate, however, it does have some associated risks along with it. If the screen is displayed abnormally after rebooting, please switch off the Overclock setting located in the monitor's OSD menu.
- \* Smart MBR is to adjust brightness for blur reduction, so cannot adjust brightness while Smart MBR is turned on. To reduce motion blur, LED backlight will strobe synchronously with screen refresh, which may cause noticeable brightness change
- \* Smart MBR is gaming-optimized mode. Turn on Smart MBR may cause noticeable screen flickering. It is recommended to turn off when you are not using the gaming function
- \* This monitor strives for sustainability: the stand's feet and headphone holder are made with 35% recycled plastic and monitor's chassis is made up of 85% post-consumer recycled plastic.
- \* Stark Shadow Boost cannot be activated while Low Input Lag is enabled.
- \* The products and accessories listed on this leaflet may differ by country and region.
- \* The monitor may look different from feature images.