

PHILIPS



QD OLED gaming
monitor

QHD Gaming
monitor

Evnia 6000

26.5" (67.3cm)

2560 x 1440 (Quad HD)



27M2N6500P

Your gaming experience to the utmost

This monitor is built for gaming at high speeds. Its 280Hz refresh rates, QD OLED panel, and DisplayHDR TrueBlack 400 certification make it a combination of incredible speed and premium picture quality.

Features designed for gamers needs

- Stark ShadowBoost: for enhancing visibility in dark scenes
- Smart Sniper: for zooming in on targets
- Evnia Precision Center: Maximize Your Gaming Experience
- AI-enhanced Ambiglow: for intensified entertainment
- SmartImage game mode optimized for gamers
- LowBlue mode and Flicker-free easy-on-the eyes viewing
- Smart Crosshair: for better aim and more fun

Built for fast action

- 280Hz trail-blazing refresh rate for smoothest gameplay

Immersive visuals

- Crystalclear images with Quad HD 2560 x 1440 pixels
- DisplayHDR™ TrueBlack 400 delivers incredible shadow details
- True 10-bit display reproduces smoother gradients on visuals

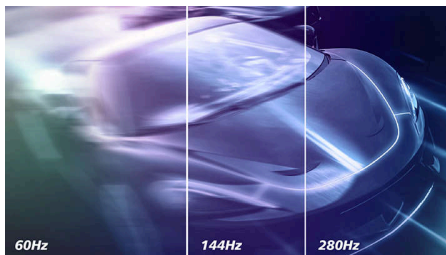
QHD Gaming monitor

QD OLED gaming monitor

27M2N6500P/75

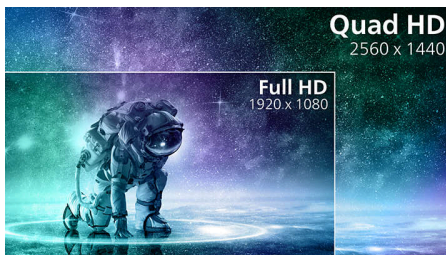
Highlights

Accelerated 280Hz refresh rate



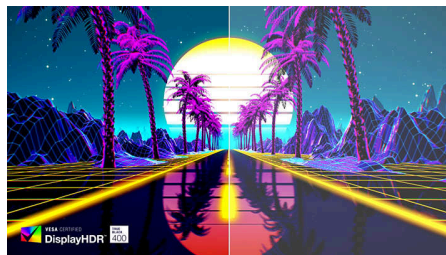
Philips Evnia 280 Hz display takes your gaming experience to new dimensions. The low input lag coupled with variable refresh rate technology gives you an Immersive gaming advantage. Plus, our wide view angle panel with high resolution provides a realistic gaming experience with unsurpassed color accuracy. Focus on what matters as adjustable stand gives the comfort you deserve and flicker-free gives an easy viewing, so you continue gaming without health worries.

Crystalclear images



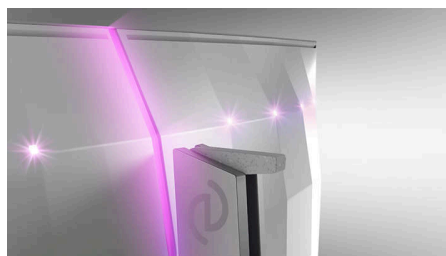
These Philips screens deliver Crystalclear, Quad HD 2560x1440 or 2560x1080 pixel images. Utilizing high performance panels with high density pixel count, enabled by high bandwidth sources, these new displays will make your images and graphics come alive. Whether you are demanding professional requiring extremely detailed information for CAD-CAM solutions, using 3D graphic applications or a financial wizard working on huge spreadsheets, Philips displays will give you Crystalclear images.

DisplayHDR™ True Black 400



This Philips monitor is certified with VESA DisplayHDR™ True Black 400. Delivering stunningly accurate shadow detail with deeper blacks for a remarkable visual experience compared with conventional monitors of the same peak luminance. This Philips monitor comes with several HDR modes, each optimized for your usage scenarios: HDR Game, HDR Movie, HDR Photo, and VESA DisplayHDR certified level.

AI-enhanced Ambiglow



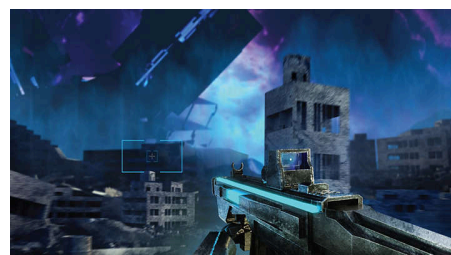
Our AI-enhanced processor analyzes the incoming image content and continuously adapts the color and brightness of the emitted light to match the image. This feature adds a new dimension to your viewing experience. The innovative Ambiglow uses its AI capabilities to create a truly immersive and customizable gaming experience. From filling your gaming room with color to feeling like you are part of the game, the AI-enhanced Ambiglow is made to make your gaming experience the best it's ever been by combining intelligence, color, and light.

SmartImage Game mode



The new Philips gaming display has quick access OSD fine tuned for gamers, offering you multiple options. "FPS" mode (First person shooting) improves dark themes in games, allowing you to see hidden objects in dark areas. "Racing" mode adapts display with fastest response time, high color, along with image adjustments. "RTS" mode (Real time strategy) has a special SmartFrame mode which enables highlighting of specific area and allows for size and image adjustments. Gamer 1 and Gamer 2 enable you to save personal customized settings based on different games, ensuring best performance.

Smart Crosshair



Color of Crosshair is set by default. When Smart Crosshair is on, the color will change as complementary color to the background color. Smart Crosshair enhances the accuracy of aiming so you can spot the enemies more easily.



QHD Gaming monitor

QD OLED gaming monitor

27M2N6500P/75

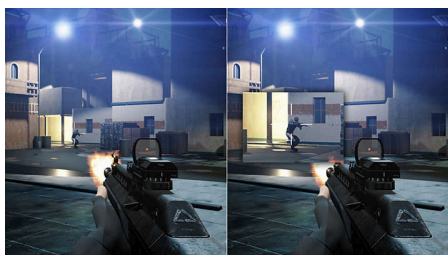
Highlights

Stark ShadowBoost



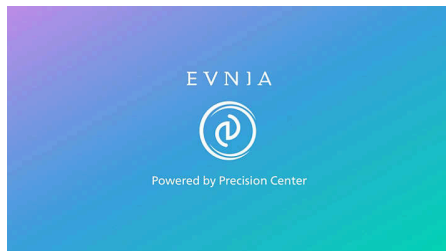
This feature enhances dark scenes without overexposing lightened areas. The Stark Shadowboost feature has three selectable levels that offer texturized images with better color saturation with higher contrast so you can see better in both light and dark environments. In addition, this feature helps you fine-tune your sight so that enemies get exposed more quickly when gaming.

Smart Sniper



This feature enables you to zoom in to multiple targets at once; ultimately making it easier to aim and hit your enemies.

Evnia Precision Center



Evnia Precision Center is an easy-to-use software designed to optimize and personalize your Evnia monitor. Whether you're a casual or competitive gamer, it offers a wide range of customization options to match your unique gaming style. With intuitive controls and seamless navigation, Evnia Precision Center gives you full control, providing everything you need to elevate your gaming to the next level—right at your fingertips.

color display, this Philips monitor produces a more natural transition between hues for smoother gradients.

LowBlue mode & Flicker-free



Our LowBlue Mode and Flicker-free technology have been developed to reduce eye strain and fatigue often caused by long hours in front of a monitor.

True 10-bit color depth



With this Philips true 10-bit color display, you can see color critical professional work of exceptional color accuracy and meeting professional standards. Compared with conventional 8-bit



LowBlue Mode

Specifications

Picture/Display

Panel Size: 26.5"/67.3cm
Aspect ratio: 16:9
LCD panel type: QD OLED
Pixel pitch: 0.2292 x 0.2292 mm
Brightness: SDR: 250nits (APL 100%), HDR: 450nits (APL 10%), HDR E/P: 1000nits (APL 3%) cd/m²
Display colors: 1.07B (10bits)
Color gamut (typical): DCI-P3:99%, sRGB: 100%, NTSC 120%, Adobe RGB 118%*
Contrast ratio (typical): 1.5M:1
SmartContrast: Mega Infinity DCR
Response time (typical): 0.03ms (Gray to Gray)*
Viewing angle: 178° (H) / 178° (V), @ C/R > 10000
Picture enhancement: SmartImage game
Maximum resolution: 2560x1440 @ 280 Hz (DP), 2560x1440 @ 144Hz (HDMI)*
Effective viewing area: 590.42(H) x 333.72(V) mm
Scanning Frequency: HDMI: 30k-250kHz(H)/ 48-144Hz(V), DP: 30k-450kHz(H)/ 48-280Hz(V)
sRGB
Delta E: < 2 (sRGB)
Flicker-free
Pixel Density: 111 PPI
Display Screen Coating: Anti-reflection, 2H
Low Input Lag
EasyRead
Adaptive sync
HDR: HDR True Black 400
Pixel format: RGB Q-Stripe*
Smart Crosshair
Stark ShadowBoost
Clear MR Tier: 13000
Smart Sniper
MultiView: 2 x devices, PBP/PIP

Connectivity

Signal Input: HDMI 2.0 x 2, DisplayPort 1.4 x 1
Sync Input: Separate Sync
Audio (In/Out): Headphone out
HDCP: HDCP 1.4 (HDMI / DisplayPort), HDCP 2.2 (HDMI / DisplayPort)
USB Hub: USB 3.2 Gen 1 / 5 Gbps, USB-B upstream x 1, USB-A downstream x 2 (with 1 for fast charge)
MultiView

Convenience

Plug & Play Compatibility: DDC/CI, Mac OS, sRGB, Windows 11 / 10
User convenience: Power On/Off, Menu/OK, Input/Up, Game Settings/Down, SmartImage game/Back
OSD Languages: Brazil Portuguese, Czech, Dutch, English, Finnish, French, German, Greek, Hungarian, Italian, Japanese, Korean, Polish, Portuguese, Russian, Spanish, Simplified Chinese, Swedish, Turkish, Traditional Chinese, Ukrainian
Other convenience: Kensington lock, VESA mount (100x100mm), LowBlue Mode
MultiView: 2x devices, PIP/PBP mode
Ambiglow: Ambiglow 3 sided
Low blue light: Yes*

Stand

Height adjustment: 130 mm
Swivel: +/- 30 degree
Tilt: -5/20 degree

Power

Power supply: Internal, 100-240VAC, 50-60Hz
Off mode: 0.3 W (typ.)
On mode: 81.5 W (typ.)
Standby mode: 0.5 W (typ.)
Power LED indicator: Operation - White, Standby mode- White (blinking)

Dimensions

Packaging in mm (WxHxD): 780 x 445 x 141 mm
Product without stand (mm): 609 x 358 x 61 mm
Product with stand(max height): 609 x 533 x 261 mm

Weight

Product with packaging (kg): 10.88 kg
Product with stand (kg): 7.22 kg
Product without stand (kg): 5.77 kg

Operating conditions

Altitude: Operation: +12,000ft (3,658m), Non-operation: +40,000ft (12,192m)
Temperature range (operation): 0°C to 40 °C
MTBF: 30,000 (Excluded backlight) hour(s)
Relative humidity: 20%-80 %
Temperature range (storage): -20°C to 60 °C

Sustainability

Environmental and energy: RoHS
Recyclable packaging material: 100 %
Post consumer recycled plastics: 85%*

Compliance and standards

Regulatory Approvals: CB, CE Mark, MEPS, CEL, CCC, UKCA, EMF, FCC, ICES-003

Cabinet

Color: Dark Slate
Finish: Textured



* For best output performance, please always ensure that your graphic card is capable of achieving the maximum resolution and refresh rate of this Philips display.
 * Low blue light compliance: The ratio of display emission light in the range from 415 - 455 nm to the display emission of 400 - 500 nm shall be less than 50%.
 * Adobe RGB and DCI-P3 Coverage based on CIE1976, sRGB Area based on CIE1931, NTSC Area based on CIE1976.
 * Response time value equal to SmartResponse. The measurement pattern is 1 horizontal line.
 * The max resolution of QHD 144Hz is supported by 8 bits
 * Active pixels: 2560(H) x 1440(V) Number of total pixels: 2576(H) x 1456(V); extra pixels on each side, space reserved for pixel orbiting.
 * This monitor strives for sustainability: the stand's feet and headphone holder are made with 35% recycled plastic and monitor's chassis is made up of 85% post-consumer recycled plastic.
 * The monitor may look different from feature images.
 * The products and accessories listed on this leaflet may differ by country and region.