



## MSK and procedures

Confidence. At the speed of life.

### Philips Flash Ultrasound System 5100 Point of Care

Use exceptional imaging to deliver high-quality care with a system specifically designed for success in MSK and procedures across patient types.



#### Top performance

Visualize important details using Philips PureWave technology that improves image quality, resolution and depth of penetration.

Gain proven clarity in superficial applications with 70% improved penetration and up to 33% improved lateral resolution in superficial applications with the mL26-8 transducer.\*



#### Versatile touch-based interface that's easy to clean

Easily access controls and functionalities through an intuitive touchscreen and control panel.

Support your infection-control practices with a sealed control panel compatible with a range of disinfectants and cleaning solutions.†



#### Designed for MSK

Make the most of small spaces with a compact, vertical design and large anti-glare touchscreen that is responsive to a gloved touch and offers visibility throughout the room.

Go when and where needed with a rugged design that combines mobility, quick boot-up and small footprint to fit in an office or ward.



#### Enhanced needle visibility

Gain procedural guidance through detailed images of diagnostic quality using enhanced needle visualization that sharpens the appearance of the needle shaft to tip across a variety of presets and transducers.

\* Compared to the predecessor L15-7io transducer on Affiniti at 0.5cm

† <https://www.philips.com.au/healthcare/resources/feature-detail/ultrasound-are-and-cleaning>

# It all happens in a Flash

## Highly-intuitive operation

with a 21.5 inch screen and visual next-step guidance supported by Philips ultrasound expertise

## Easy to clean

using special cleaning mode with system lock

## IPX2-certified control panel for reliability

offers large, easy-to-use buttons and knobs, providing tactile feedback to enhance workflow

**93% of users** valued the flexibility of choosing between the touchscreen and control panel for intuitive operation<sup>1</sup>

## Maintenance-friendly hardware architecture

brings a rugged design featuring an automotive-grade aluminum structure with quick boot up time

**Long battery life** for up to 2 hours of scanning

**Clear battery status indicator** and LED bar

**Keep cables organized** and off the ground with integrated above-screen transducer rack

**The power of PureWave and xMatrix transducers** for exceptional image quality

**Stay connected** and ready for order- and encounter-based workflow (OBW/EBW) with seamless integration to hospital systems, Qview\* workflow manager and Collaboration Live† tele-ultrasound

**Customize your experience** with a broad selection of customizable presets

**Multiple storage options** offer flexible, modular storage at the front or back



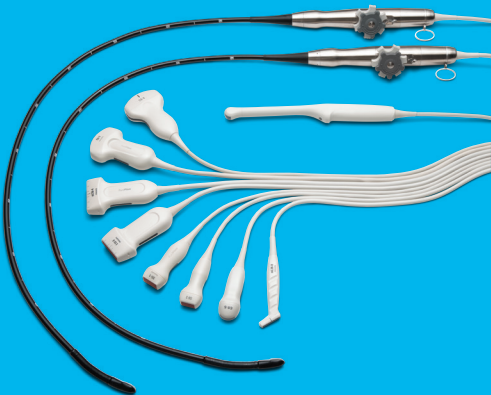
\* Sold separately.

† Contract required.

## Share even more transducers across systems

Exceptional transducers for exceptional images

Share many transducers across EPIQ, Affiniti, Compact 5000 Series systems and legacy systems such as Sparq and CX50. This leverages your investment across departments from the OR to the clinic to the office.



mL26-8 transducer



eL18-4 transducer



L12-3ERGO transducer

The AutoStrain EF feature and X8-2t transducer are available only on the Pro configuration of Flash 5100 POC.

1. Philips internal usability study.



2797

© 2025 Koninklijke Philips N.V. All rights are reserved. Trademarks are the property of Koninklijke Philips N.V. or their respective owners.



www.philips.com  
Printed in the Netherlands.

00000726-00-01 \* DEC 2025