

PHILIPS



Smart Fit Knee coil

Patient centric workflow with **ultra lightweight Smart Fit coils**

The Smart Fit Knee coil is a dedicated knee imaging solution that offers high quality diagnostics while being lightweight and easy to use.

Smart Fit coils are an integral part of the patient-centric workflows that Philips MR systems offer, combining with advanced AI-powered software to help reduce scanning time and the number of steps required to complete an exam.

These coils have lightweight, patient-friendly designs that will speed up the MR exam process, helping to improve both efficiency as well as the overall patient experience. The Smart Fit knee coil is 20% lighter than predicate dS Knee coil and integrates with the dedicated mattress to provide improved patient comfort.

The compact design of the Smart Fit knee coil makes it easy to handle, with a visual alignment guide to simplify patient positioning, enabling up to 10% faster patient set-up time when switching between left to right or right to left knee scan. The Smart Fit knee coil is a dedicated knee imaging solution that delivers 20% resolution improvement in the same scan time with the same SNR.*

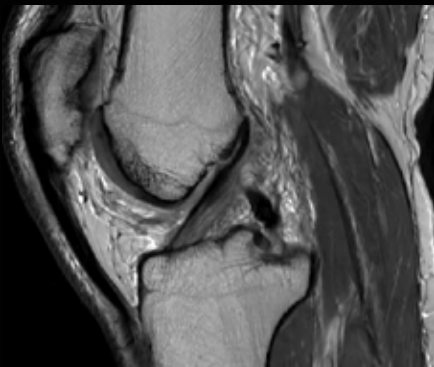
* Because of better sensitivity patterns of the better element layout compare to predicate dS Knee Coil 8ch 3.0T

Smart Fit Knee coil

Product benefits

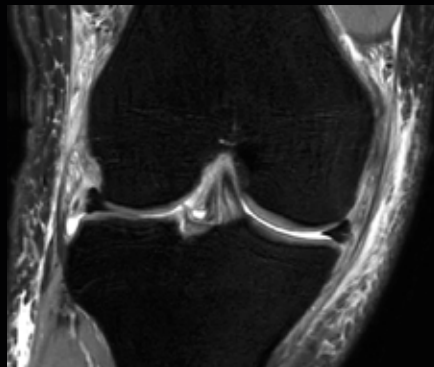
- 20% lighter than predicate dS Knee coil
- Up to 10% faster patient set-up time
- 20% improvement in resolution, in the same scan time, with the same SNR*

Systems	3.0T systems
Coverage	20 cm / 7.9 inch
Number of channels	16
Main applications	Knee
Weight	4.0 kg / 8.8 lbs



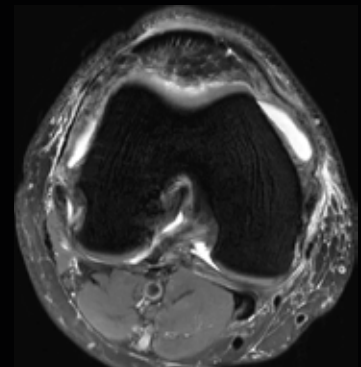
SAG PD
Resolution:
0.45 x 0.57 x 3.0mm
Elition 3.0T

2:50 min



Cor PD FS
Resolution:
0.5 x 0.56 x 3.0 mm
Elition 3.0T

1:48 min



AX PD FS
Resolution:
0.5 x 0.56 x 3.00 mm
Elition 3.0T

1:48 min

* Because of better sensitivity patterns of the better element layout compare to predicate dS Knee Coil 8ch 3.0T

